

## SERIES DCT500A | LOW COST TIMER CONTROLLER

### FEATURES/BENEFITS

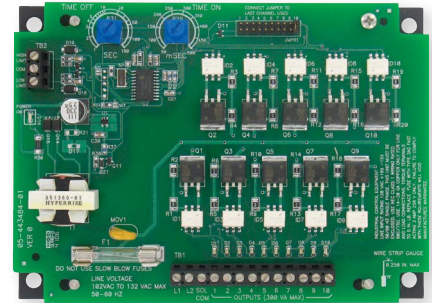
- Simple and easy to use design
- Optional weatherproof enclosure available

### APPLICATIONS

- Dust collection
- Pneumatic conveying
- Cement batch plants

### DESCRIPTION

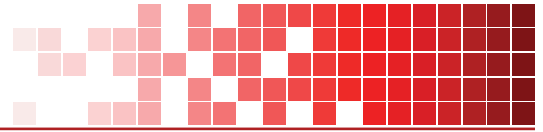
The **Series DCT500A Low Cost Timer Controller** is designed to provide continuous or on-demand cleaning for receivers and pulse jet systems. It is available in either 4, 6, or 10 channels, and each unit is the same size, minimizing enclosure space and reducing overall system installation cost. For added safety, the control circuitry including the control inputs are isolated from the line voltage



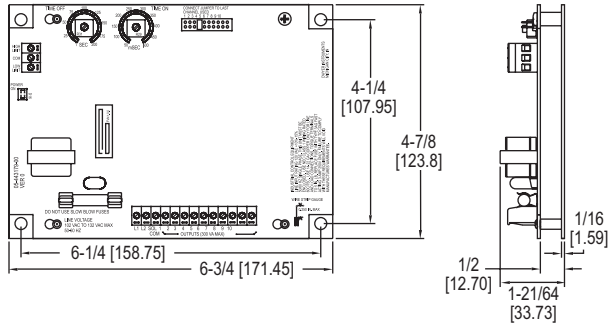
### SPECIFICATIONS

<b>Output Channels</b>	4, 6, & 10 channels.
<b>Power Requirements</b>	102 to 132 VAC 50 or 60 Hz.
<b>Power Consumption</b>	2.5 W.
<b>Solenoid Supply</b>	3A max. per channel.
<b>Fuse</b>	Type 3 AG, 3 A @ 250 VAC.
<b>Temperature Limits</b>	-40 to 140°F (-40 to 60°C).
<b>Storage Temperature Limits</b>	-40 to 176°F (-40 to 80°C).
<b>On Time</b>	50 msec to 500 msec.
<b>On Time Accuracy</b>	±10 msec.
<b>On Time Stability</b>	±1 ms.
<b>Off Time</b>	1 s to 180 s.
<b>Off Time Accuracy</b>	±5% of setting.
<b>Weight</b>	9 oz (255 g).
<b>Agency Approvals</b>	CE, cUL, UL.

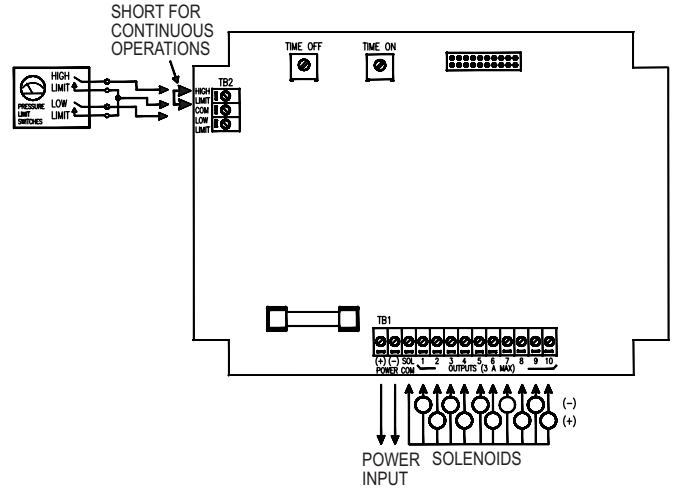




## DIMENSIONS



## WIRING DIAGRAM



## HOW TO ORDER

Use the **bold** characters from the chart below to construct a product code.

SERIES	NUMBER OF CHANNELS	OPTIONS
<b>DCT5:</b> Low Cost Timer Controller	<b>04A:</b> 4 channels <b>06A:</b> 6 channels <b>10A:</b> 10 channels	<b>-COC:</b> Certificate of conformance <b>-COO:</b> Certificate of U.S. origin <b>-H:</b> Horizontal mounting <b>-L:</b> Large base plate <b>-R:</b> Random off feature <b>-WP:</b> Weatherproof housing <b>-SC:</b> Stop on clean <b>-TO:</b> 10 second time on

Important Notice: Dwyer Instruments, Inc. reserves the right to make changes to or discontinue any product or service identified in this publication without notice. Dwyer advises its customers to obtain the latest version of the relevant information to verify, before placing any orders, that the information being relied upon is current.

