

OM-CP-PROCESS101 and OM-CP-PROCESS110

4 to 20 mA Current Data Loggers

Part of the NOMAD® Family



OM-CP-PROCESS110-25MA, \$299, data logger shown larger than actual size



OM-CP-PROCESS101, \$199 data logger shown larger than actual size

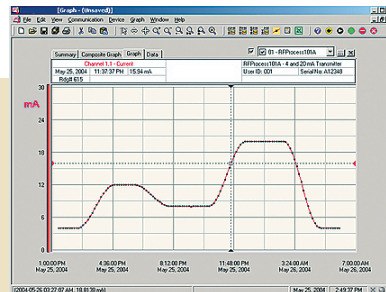
\$199
Basic Unit

- ✓ 16-Bit Resolution
- ✓ Programmable Scale Factor, Engineering Units and Offset Value
- ✓ Memory Wrap Around
- ✓ Miniature Size
- ✓ User Calibration Through Software
- ✓ Real Time Operation

The OM-CP-PROCESS101 and OM-CP-PROCESS110 are low cost, high resolution, miniature battery powered, stand-alone data loggers used for automatically recording current. In addition, these data loggers allow the user to store user defined units such as pressure into the device as well as scale factors and offset values. This enables the user to easily linearize and scale any process meter that provides an analog output to engineering units automatically. This all-in-one compact, portable, easy-to-use device will measure and record up to 32,768 current measurements.

These data loggers are a major leap forward in both size and performance. Its real time clock ensures that all data is time and date stamped.

The storage medium is non-volatile solid state memory, providing maximum data security even if the battery becomes discharged. Its small size allows it to fit almost anywhere. Data retrieval is simple. Plug it into an empty COM port and our easy to use software does the rest. The software converts your PC into a real time strip chart recorder.



OM-CP-IFC200, \$119, Windows software displays data in graphical or tabular format.

Date	Time	Current	Units	Amplitude
May 19, 2004	11:22:37 PM	13.91	mA	13.91
May 19, 2004	11:23:07 PM	14.00	mA	14.00
May 19, 2004	11:23:37 PM	14.14	mA	14.14
May 19, 2004	11:24:07 PM	14.28	mA	14.28
May 19, 2004	11:24:37 PM	14.42	mA	14.42
May 19, 2004	11:25:07 PM	14.56	mA	14.56
May 19, 2004	11:25:37 PM	14.70	mA	14.70
May 19, 2004	11:26:07 PM	14.84	mA	14.84
May 19, 2004	11:26:37 PM	14.98	mA	14.98
May 19, 2004	11:27:07 PM	15.12	mA	15.12
May 19, 2004	11:27:37 PM	15.26	mA	15.26
May 19, 2004	11:28:07 PM	15.40	mA	15.40
May 19, 2004	11:28:37 PM	15.54	mA	15.54
May 19, 2004	11:29:07 PM	15.68	mA	15.68
May 19, 2004	11:29:37 PM	15.82	mA	15.82
May 19, 2004	11:30:07 PM	15.96	mA	15.96
May 19, 2004	11:30:37 PM	16.10	mA	16.10
May 19, 2004	11:31:07 PM	16.24	mA	16.24
May 19, 2004	11:31:37 PM	16.38	mA	16.38
May 19, 2004	11:32:07 PM	16.52	mA	16.52
May 19, 2004	11:32:37 PM	16.66	mA	16.66
May 19, 2004	11:33:07 PM	16.80	mA	16.80
May 19, 2004	11:33:37 PM	16.94	mA	16.94
May 19, 2004	11:34:07 PM	17.08	mA	17.08
May 19, 2004	11:34:37 PM	17.22	mA	17.22
May 19, 2004	11:35:07 PM	17.36	mA	17.36
May 19, 2004	11:35:37 PM	17.50	mA	17.50
May 19, 2004	11:36:07 PM	17.64	mA	17.64
May 19, 2004	11:36:37 PM	17.78	mA	17.78
May 19, 2004	11:37:07 PM	17.92	mA	17.92
May 19, 2004	11:37:37 PM	18.06	mA	18.06
May 19, 2004	11:38:07 PM	18.20	mA	18.20
May 19, 2004	11:38:37 PM	18.34	mA	18.34
May 19, 2004	11:39:07 PM	18.48	mA	18.48
May 19, 2004	11:39:37 PM	18.62	mA	18.62
May 19, 2004	11:40:07 PM	18.76	mA	18.76
May 19, 2004	11:40:37 PM	18.90	mA	18.90
May 19, 2004	11:41:07 PM	19.04	mA	19.04

Statistics	Value
Minimum	4 mA
Maximum	20.01 mA
Average	10.9327 mA
Standard Deviation	5.40783 mA

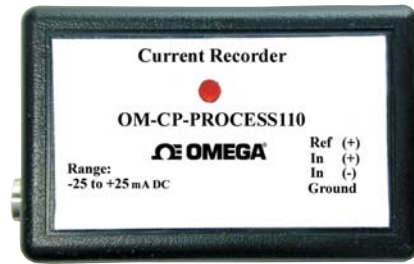
Data can be printed in graphical or tabular format and can be exported to a text or Microsoft Excel file.

Specifications

- Input Connection:** Screw terminal
- ADC Resolution:** 16-bits
- Current Calibration:** Digital calibration is available in software
- Recording Interval:** 1 second to 12 hours selectable in software
- Real Time Recording:** Device may be used with PC to monitor and record data in real time
- Red Visual Indicator:** LED flashes at selected reading rate



OM-CP-PROCESS110-25MA, \$299, data logger shown larger than actual size



*OM-CP-PROCESS101 is CE approved only

OM-CP-PROCESS101, \$199 data logger shown larger than actual size

Power:

3.6 V lithium battery included

Battery Life:

OM-CP-PROCESS101:

1 year at 1 min reading rate

OM-CP-PROCESS110:

10 years at 15 min reading rate

Time Accuracy: ±1 minute per month at 20°C

Data Format: Date and time stamped, volts, other engineering units programmable through software

Weight:

OM-CP-PROCESS101:

30 g (1 oz)

OM-CP-PROCESS110:

60 g (2 oz)

Computer Interface:

PC serial, RS-232C COM

or USB (interface cable required)

Software: XP SP3/Vista and 7 (32-bit and 64-bit)

Communications:

OM-CP-PROCESS101: 2400 baud

OM-CP-PROCESS110: 57600 baud

Operating Environment:

-40 to 80°C (-40 to 176°F)

0 to 95% RH non-condensing

Dimensions:

OM-CP-PROCESS101:

35 H x 64 W x 15 mm D

(1.4 x 2.5 x 0.6")

OM-CP-PROCESS110:

41 H x 58 W x 20 mm D

(1.6 x 2.3 x 0.8")

INPUT RANGES	OM-CP-PROCESS101	OM-CP-PROCESS110-1MA	OM-CP-PROCESS110-25MA	OM-CP-PROCESS110-100MA
Nominal Input Range	0 to 100 mA	±1 mA	±25 mA	±100 mA
Measurement Range	-20 to 120 mA	±1.25 mA	±30mA	±120 mA
Resolution	10 µA	0.05 µA	1 µA	5 µA
Accuracy	±0.1% FSR	±0.5% FSR	±0.1% FSR	±0.1% FSR
Input Impedance	10 Ω	50 Ω	10 Ω	2 Ω
Overload Protection	±125 mA	±20 mA	±100 mA	±125 mA

MOST POPULAR MODELS HIGHLIGHTED!

To Order (Specify Model Number)		
Model No.	Price	Description
OM-CP-PROCESS101	\$199	Process input data logger, 0 to 100 mA input range (CE approved only)
OM-CP-PROCESS101-CERT	259	Process input data logger, 0 to 100 mA input range with NIST calibration certificate (CE approved only)
OM-CP-PROCESS110-1MA	299	Process input data logger, ±1 mA input range, extended battery life
OM-CP-PROCESS110-1MA-CERT	359	Process input data logger, ±1 mA input range, extended battery life with NIST calibration certificate
OM-CP-PROCESS110-25MA	299	Process input data logger, ±25 mA input range, extended battery life
OM-CP-PROCESS110-25MA-CERT	359	Process input data logger, ±25 mA input range, extended battery life with NIST calibration certificate
OM-CP-PROCESS110-100MA	299	Process input data logger, ±100 mA input range, extended battery life
OM-CP-PROCESS110-100MA-CERT	359	Process input data logger, ±100 mA input range, extended battery life with NIST calibration certificate
OM-CP-IFC200	119	Windows software and 3.7 m (12') USB interface cable
OM-CP-BAT105	12	Replacement 3.6 V lithium battery
OM-CP-CONNECTOR-2	4	Replacement 2 position terminal block connector for the OM-CP-PROCESS101
OM-CP-CONNECTOR-3	6	Replacement 3 position terminal block connector for the OM-CP-PROCESS110-1MA, OM-CP-PROCESS110-25MA and OM-CP-PROCESS110-100MA

Operator's manual, battery, and USB interface cable are included with the **OM-CP-IFC200** Windows software, (software is required to operate the data logger and is sold separately).

Ordering Example: **OM-CP-PROCESS101-CERT** 4 to 20 mA current data logger with NIST calibration certificate and **OM-CP-IFC200** Windows software and USB interface cable, \$259 + 119 = **\$378**.



UNITED STATES

www.omega.com
1-800-TC-OMEGA
Stamford, CT.

CANADA

www.omega.ca
Laval(Quebec)
1-800-TC-OMEGA

GERMANY

www.omega.de
Deckenpfronn, Germany
0800-8266342

UNITED KINGDOM

www.omega.co.uk
Manchester, England
0800-488-488

FRANCE

www.omega.fr
Guyancourt, France
088-466-342

CZECH REPUBLIC

www.omegaeng.cz
Karviná, Czech Republic
596-311-899

BENELUX

www.omega.nl
Amstelveen, NL
0800-099-33-44



More than 100,000 Products Available!

• Temperature

Calibrators, Connectors, General Test and Measurement Instruments, Glass Bulb Thermometers, Handheld Instruments for Temperature Measurement, Ice Point References, Indicating Labels, Crayons, Cements and Lacquers, Infrared Temperature Measurement Instruments, Recorders Relative Humidity Measurement Instruments, RTD Probes, Elements and Assemblies, Temperature & Process Meters, Timers and Counters, Temperature and Process Controllers and Power Switching Devices, Thermistor Elements, Probes and Assemblies, Thermocouples Thermowells and Head and Well Assemblies, Transmitters, Wire

• Flow and Level

Air Velocity Indicators, Doppler Flowmeters, Level Measurement, Magnetic Flowmeters, Mass Flowmeters, Pitot Tubes, Pumps, Rotameters, Turbine and Paddle Wheel Flowmeters, Ultrasonic Flowmeters, Valves, Variable Area Flowmeters, Vortex Shedding Flowmeters

• pH and Conductivity

Conductivity Instrumentation, Dissolved Oxygen Instrumentation, Environmental Instrumentation, pH Electrodes and Instruments, Water and Soil Analysis Instrumentation

• Data Acquisition

Auto-Dialers and Alarm Monitoring Systems, Communication Products and Converters, Data Acquisition and Analysis Software, Data Loggers Plug-in Cards, Signal Conditioners, USB, RS232, RS485 and Parallel Port Data Acquisition Systems, Wireless Transmitters and Receivers

• Pressure, Strain and Force

Displacement Transducers, Dynamic Measurement Force Sensors, Instrumentation for Pressure and Strain Measurements, Load Cells, Pressure Gauges, Pressure Reference Section, Pressure Switches, Pressure Transducers, Proximity Transducers, Regulators, Strain Gages, Torque Transducers, Valves

• Heaters

Band Heaters, Cartridge Heaters, Circulation Heaters, Comfort Heaters, Controllers, Meters and Switching Devices, Flexible Heaters, General Test and Measurement Instruments, Heater Hook-up Wire, Heating Cable Systems, Immersion Heaters, Process Air and Duct, Heaters, Radiant Heaters, Strip Heaters, Tubular Heaters