

## Portable Temperature and Humidity Data Loggers Part of the NOMAD™ Family

### OM-90 Series



- ✓ Models for Temperature (OM-91) and Temperature/Humidity (OM-92)
- ✓ Immediate, Delayed (Specific Date/Time) or Pushbutton Start
- ✓ Real-Time Mode
- ✓ User-Configurable High and Low Alarms
- ✓ LED Status Indicators
- ✓ USB Interface for Fast Data Transfer
- ✓ Compact, Light Weight, Easy-to-Use
- ✓ Long Battery Life
- ✓ Free Software Download

The OM-90 Series are portable, battery operated, temperature (OM-91) and temperature/humidity (OM-92) data loggers. The OM-90 Series data loggers offer accurate and repeatable logging for temperature and relative humidity. Temperature is measured to an accuracy of  $\pm 0.3^{\circ}\text{C}$  over the range of 5 to  $60^{\circ}\text{C}$  ( $41$  to  $140^{\circ}\text{F}$ ) and  $\pm 2.0^{\circ}\text{C}$  over the full range of  $-30$  to  $80^{\circ}\text{C}$  ( $-22$  to  $176^{\circ}\text{F}$ ). Relative humidity is measured to an accuracy of  $\pm 3.0\%$  RH over the 20 to 80% RH range and  $\pm 5.0\%$  RH over the 0 to 100% RH range. Both temperature and relative humidity are logged at a user configurable logging rate which is software selectable.

These data loggers are ideal for transportation applications where it is necessary to document that the material in-transit has stayed within particular environmental limits. High/low alarm limits can be set above or below which LED indicators will be activated so that the user can become aware that the desired transportation conditions have been exceeded.

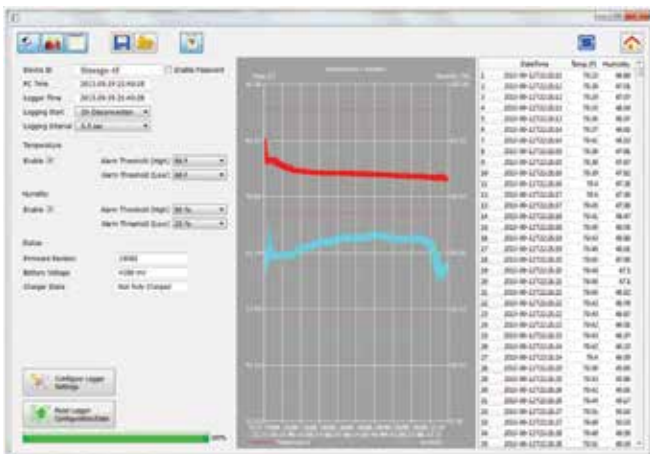
Each data logger can be assigned a 16 character name. This can be helpful in applications where multiple data loggers are used and there is a need to distinguish between them (for example based on location).



OM-91 temperature data logger.



OM-92 temperature/humidity data logger.



Windows® software used for data logger configuration and data display in graphical or tabular format.

The data logger includes a very easy to use software application. The application is used for configuration of the logger, extraction of logger data, graphically viewing data, spread sheet analysis of data and saving data to file (typically in comma separated value CSV file format) for third party applications such as Microsoft Excel. The graphical user interface is completely intuitive in terms of configuring new devices and extracting data from a field device. When the user has multiple devices requiring the same setup then a logger setup from a saved configuration file can be preloaded into the application to help expedite the process and ensure all loggers get setup identically. The application does not require any driver installations to connect to the data logger. Just install the software, run it and then connect the data logger.

## SPECIFICATIONS

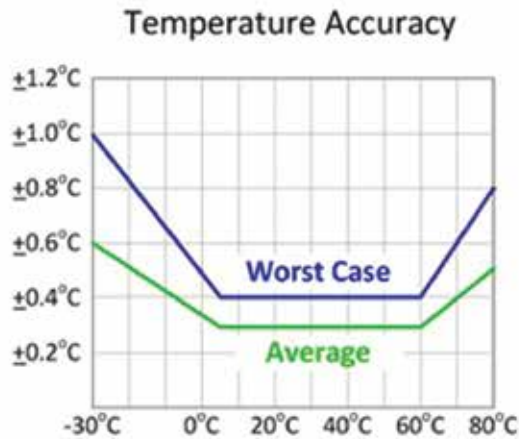
### Temperature

**Range:** -30 to 80°C (-22 to 176°F)

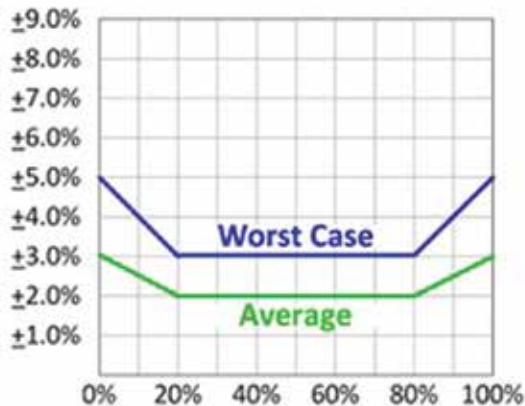
**Resolution:** 0.01°C

**Accuracy:** ±0.3°C from 5 to 60°C (41 to 140°F)

**Calibration Accuracy @ 25°C ±20°C:** ±0.1°C



### Humidity Accuracy (at 25°C)



### Humidity (OM-92 Only)

**Range:** 0 to 100% RH

**Resolution:** 0.01% RH

**Accuracy:** ±3% over 20 to 80% RH range; ±5% RH below 20% RH or above 80% RH

**Calibration Accuracy @ 25% RH:** ±1.8% RH @ 25% RH

### Memory

**OM-91:** 65,520 temperature measurements

**OM-92:** 65,520 temperature and 65,520 humidity measurements

**Start Modes:** Immediate start on disconnect from PC, delayed start (scheduled date/time) or pushbutton start

**Recording Mode:** Stop on memory full; when data logger operation is start/stopped by user intervention via button press, last memory location is retained

**Recording Interval:** 1 sec, 10 sec, 30 sec, 1 min, 10 min, 30 min, 1 hr (software selectable)

**Software Compatibility:** Windows XP/Vista/7, 8 & 10 (32-bit and 64-bit)

**Real Time Logging:** Displays real-time data when connected to a PC

**Real Time Clock:** Time automatically synced to PC

**Battery Backup:** Continues to keep time when off

**Accuracy:** 0.50 sec/day (~3 min/year)

**Alarms:** High and Low alarms for temperature and humidity; dedicated alarm LED indicator

**LED Indicators:** Alarm and status LEDs

**Device ID:** Each data logger can have a 16 character name assigned

**Connections:** 0.9 m (3') USB Micro-B to PC cable (included)

**Power:** 3V lithium CR2450 battery included (user replaceable)

**Battery Life:** Over 4 year battery life while logging

**Bypass Mode:** Unit is powered from USB when connected to conserve the battery

**Dimensions:** 53 H x 33 W x 15 mm D (1.38 x 2.36 x 0.6")

**Weight:** 25 g (0.9 oz)

## To Order

Model No.	Description
OM-91	Temperature data logger
OM-91-NIST	Temperature data logger with single point (25°C) NIST calibration certificate
OM-92	Temperature/humidity data logger
OM-92-NIST	Temperature/humidity data logger with single point (25°C) NIST calibration certificate (temperature calibration only)

Comes complete with 0.9 m (3.0') USB interface cable, software CD (free download available on the OM-90 web page), and 3V lithium battery.

**Ordering Example:** OM-92-NIST, temperature/humidity data logger with single point NIST calibration certificate.