

PFA COMPRESSION FITTINGS FOR TUBING

PFA COMPRESSION

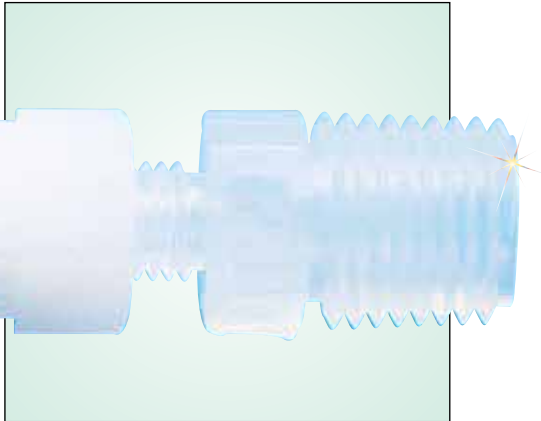
FTTP Series



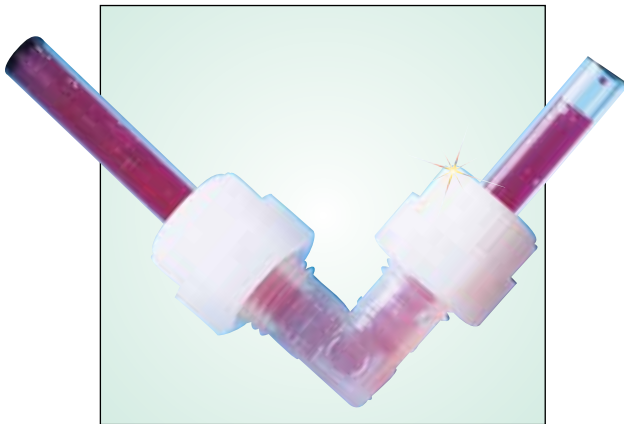
All OMEGA® PFA fittings are equipped with the Grab-Seal System for positive sealing. Installation is quick and easy, and no tools are required. Simply cut tubing to desired length; position nut, Grab-Seal gripper, and ferrule on the tube, and tighten the nut with your fingers.

For most applications, all you need is your hand to make a positive leak-free connection. Applications include biomedical, chemical, petro-chemical, food processing, and semiconductor industries.

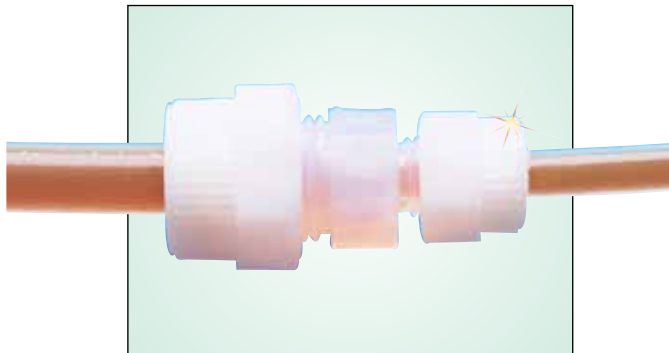
Straight Male Adaptor



Union Elbow



Union Reducer



To Order		
Model No.	Tube OD (inch)	Pipe Size NPT
FTTP-22	1/8	1/8
FTTP-24	1/8	1/4
FTTP-42	1/4	1/8
FTTP-44	1/4	1/4
FTTP-46	1/4	3/8
FTTP-48	1/4	1/2
FTTP-62	3/8	1/8
FTTP-64	3/8	1/4
FTTP-66	3/8	3/8
FTTP-68	3/8	1/2
FTTP-84	1/2	1/4
FTTP-86	1/2	3/8
FTTP-88	1/2	1/2
FTTP-812	1/2	3/4
FTTP-128	3/4	1/2
FTTP-1212	3/4	3/4
FTTP-1216	3/4	1
FTTP-1612	1	3/4
FTTP-1616	1	1

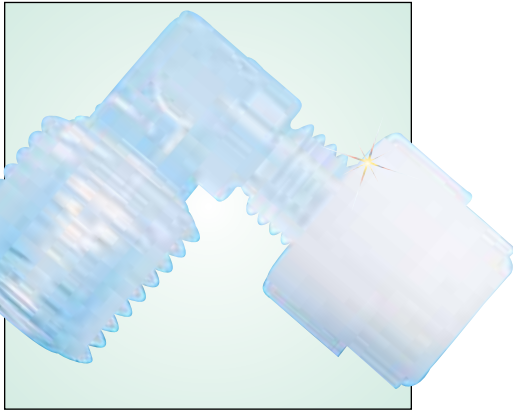
Ordering Example: FTTP-22, 1/8" OD tube, male connector.
Visit us online for a full selection of OMEGAFLEX® tubing.

Model No.	Tube OD (inch)
FTTP-2	1/8
FTTP-4	1/4
FTTP-6	3/8
FTTP-8	1/2
FTTP-12	3/4
FTTP-16	1

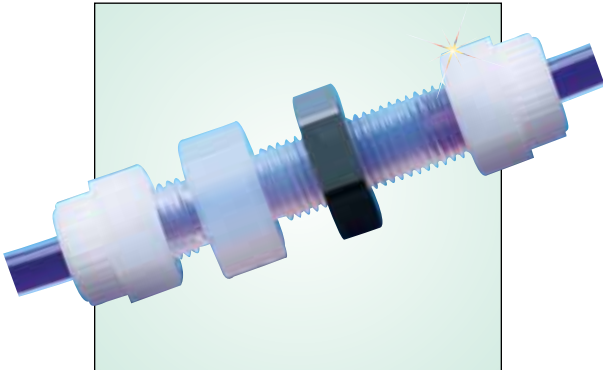
Model No.	Tube Od	
	OD 1 (inch)	OD (inch)
FTTP-24U	1/8	1/4
FTTP-46U	1/4	3/8
FTTP-48U	1/4	1/2
FTTP-68U	3/8	1/2
FTTP-128U	3/4	1/2
FTTP-1216U	3/4	1

PFA Compression Fittings

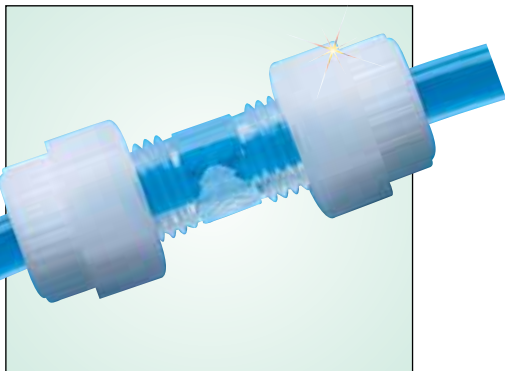
Male Elbow



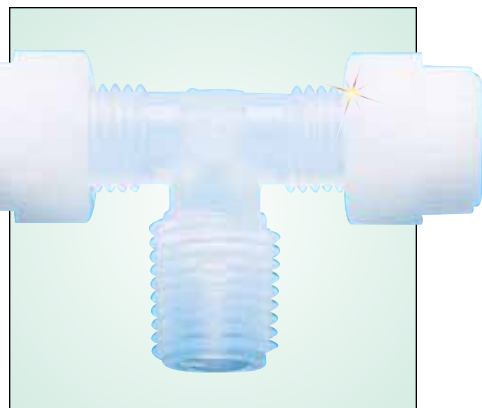
Union Panel Mount



Union



Male Branch Tee



To Order		
Model No.	Tube OD (inch)	Pipe Size NPT
FTTP-22E	1/8	1/8
FTTP-24E	1/8	1/4
FTTP-42E	1/4	1/8
FTTP-44E	1/4	1/4
FTTP-46E	1/4	3/8
FTTP-62E	3/8	1/8
FTTP-64E	3/8	1/4
FTTP-66E	3/8	3/8
FTTP-68E	3/8	1/2
FTTP-84E	1/2	1/4
FTTP-86E	1/2	3/8
FTTP-88E	1/2	1/2
FTTP-812E	1/2	3/4
FTTP-128E	3/4	1/2
FTTP-1212E	3/4	3/4
FTTP-1216E	3/4	1
FTTP-1612E	1	3/4
FTTP-1616E	1	1

Model No.	Tube OD (inch)
FTTP-2S	1/8
FTTP-4S	1/4
FTTP-6S	3/8
FTTP-8S	1/2
FTTP-12S	3/4
FTTP-16S	1

Model No.	Tube OD (Inch)
FTTP-2SU	1/8
FTTP-4SU	1/4
FTTP-6SU	3/8
FTTP-8SU	1/2
FTTP-12SU	3/4
FTTP-16SU	1

Model No.	Tube OD (inch)	Pipe Size NPT
FTTP-2M	1/8	1/8
FTTP-4M	1/4	1/4
FTTP-6M	3/8	3/8
FTTP-8M	1/2	1/2
FTTP-12M	3/4	3/4
FTTP-16M	1	1

Ordering Example: FTTP-16M, 1" OD tube, male branch tee.

Male Run Tee

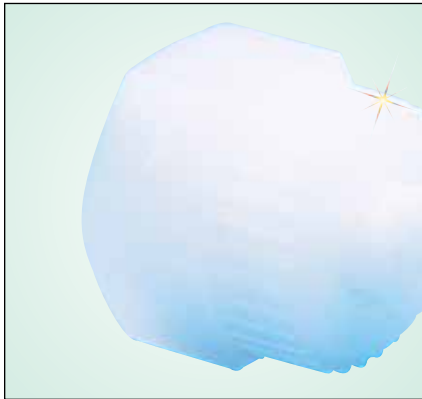


To Order

Model No.	Tube OD (inch)	Pipe Size NPTF
FTTP-2MR	1/8	1/8
FTTP-4MR	1/4	1/4
FTTP-6MR	3/8	3/8
FTTP-8MR	1/2	1/2
FTTP-12MR	3/4	3/4
FTTP-16MR	1	1

PFA Tube Accessories

Nut



Model No.	Tube OD (inch)
FTTP-2N	1/8
FTTP-4N	1/4
FTTP-6N	3/8
FTTP-8N	1/2
FTTP-12N	3/4
FTTP-16N	1

Grab-Seal Gripper



Model No.	Tube OD (inch)
FTTP-2G	1/8
FTTP-4G	1/4
FTTP-6G	3/8
FTTP-8G	1/2
FTTP-12G	3/4
FTTP-16G	1

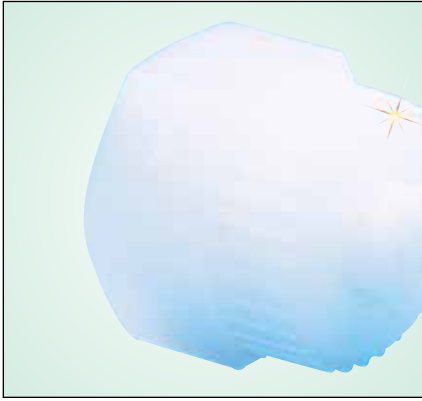
Grab-Seal Ferrule



Model No.	Tube OD (inch)
FTTP-2F	1/8
FTTP-4F	1/4
FTTP-6F	3/8
FTTP-8F	1/2
FTTP-12F	3/4
FTTP-16F	1

Ordering Example: FTTP-2N, nut for 1/8" OD tubing.

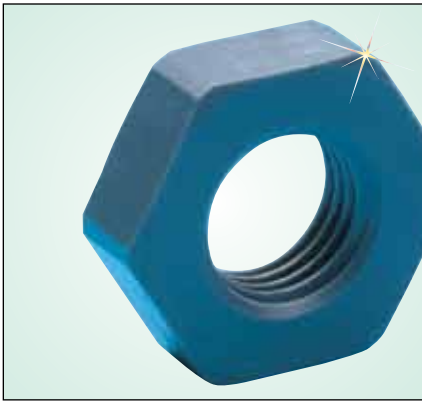
Plug



To Order

Model No.	Tube Size (inch)
FTTP-2P	1/8
FTTP-4P	1/4
FTTP-6P	3/8
FTTP-8P	1/2
FTTP-12P	3/4
FTTP-16P	1

Panel Nut



Model No.	Tube OD (inch)	Hex Flat (inch)
FTTP-2PN	1/8	3/4
FTTP-4PN	1/4	3/4
FTTP-6PN	3/8	1
FTTP-8PN	1/2	1 1/4
FTTP-12PN	3/4	1 5/8

Ordering Example: FTTP-4PN, panel nut for 1/4" tube OD.

PFA Tube Accessories

1. Cut tubing to desired length.
2. Loosen the nut, insert tube (the pre-assembled fitting should be ready for use).
3. Tighten the nut.
4. The fitting is now ready for use. No tools are required, but if you decide to use a mechanical device to tighten it, rotate the nut no more than a 1/2 turn past finger-tight.

