

# GENERAL PURPOSE SIDE-EXIT INDUSTRIAL ACCELEROMETER

## ACC320

- ✓ 2-Pin MIL-Style Connector
- ✓ Splashproof Design
- ✓ Ground Isolated
- ✓ Hermetic Seal
- ✓ For Motors, Pumps, Gearboxes, and General Industrial Applications

### SPECIFICATIONS

Sensitivity @ 100 Hz, ±10%: 100 mV/g

Frequency Range:

±5%	5 Hz to 4 kHz
±10%	4 Hz to 7 kHz
±3 dB	2 Hz to 12 kHz

Turn-On Time: ≤0.5 s

Amplitude Range: ±70 g peak

Mounting Resonance: >18 kHz

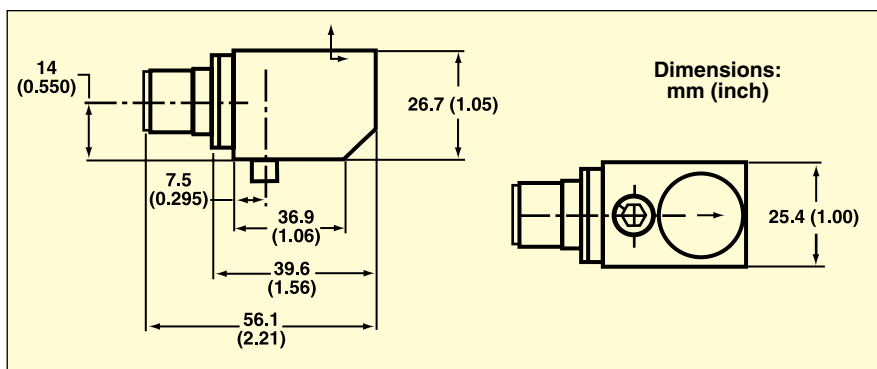
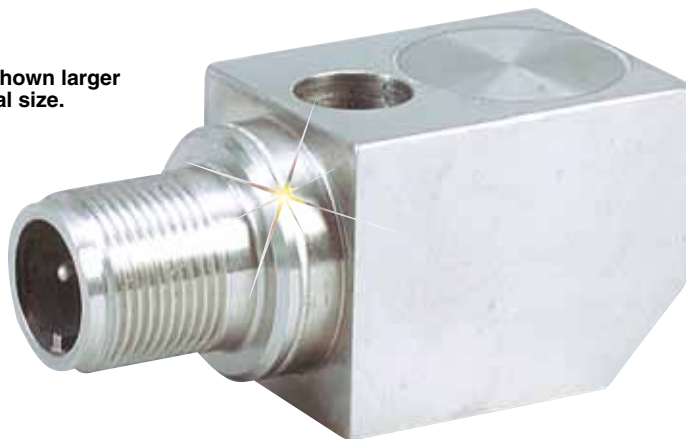
Transverse Sensitivity: ≤5%

Amplitude Linearity: <1%

Noise (Typical):

<b>Broadband:</b>	
2.5 Hz to 12 kHz	350 µg
<b>Spectral:</b>	
10 Hz	30 µg/√Hz
100 Hz	8 µg/√Hz
1000 Hz	3 µg/√Hz

ACC320 shown larger than actual size.



Output Impedance: 100 Ω

Grounding: Isolated

Bias Voltage: 10 to 14 Vdc

Power Requirement: 24 to 30 Vdc

Current Regulating Diode:

2 to 6 mA cc

Temperature Range: -40 to 121°C (-40 to 250°F)

Base Strain Sensitivity, Maximum:

0.005 g/microstrain

Shock Limit: 5000 g peak

### PHYSICAL

Weight: 154.5 g (5.5 oz)

Case Material: 304L SS

Design: Piezoelectric—ring shear

Sealing: Welded—hermetic

Mounting: ¼-28 stud (not included)

Mounting Torque: 2.8 N-m (25 in-lb)

Mating Connector: Amphenol

97-3106A-10SL-4S

Recommended Cabling: ACC-CB7-10

### To Order

MODEL NO.	DESCRIPTION
ACC320	General purpose accelerometer with side exit connector

### ACCESSORIES

MODEL NO.	DESCRIPTION
ACC-CB7-10	3.05 m (10') MIL/BNC twisted-pair shielded cable
ACC-CB7-10WP	3.05 m (10') waterproof twisted-pair shielded cable
ACC-PS2	3-range battery-powered signal conditioner
ACC-PS3	AC-powered signal conditioner
ACC-CB6	17.8 cm (7") BNCM/pigtail coaxial cable

Visit us online for details on the above signal conditioners.

Ordering Example: ACC320, accelerometer, ACC-CB7-10, cable, ACC-PS2, signal conditioner.