

# User's Guide

Instruction Sheet

*Shop online at*

**omega.com<sup>®</sup>**

Ω OMEGA<sup>®</sup>

*omega.com*

*e-mail: info@omega.com*

*For latest product manuals:*

*omegamanual.info*



## OM-EL-WIN-USB-RT

**SOFTWARE FOR  
OM-EL-USB-RT  
REAL-TIME MONITOR**

**WINDOWS VISTA/XP/2000  
CONFIGURATION SOFTWARE  
INSTALLATION WITH OPERATIONS GUIDE**



**OMEGAnet® Online Service**  
**omega.com**

**Internet e-mail**  
**info@omega.com**

### **Servicing North America:**

**U.S.A.:**  
ISO 9001 Certified

One Omega Drive, P.O. Box 4047  
Stamford, CT 06907-0047  
TEL: (203) 359-1660 FAX: (203) 359-7700  
e-mail: info@omega.com

**Canada:**

976 Bergar  
Laval (Quebec) H7L 5A1, Canada  
TEL: (514) 856-6928 FAX: (514) 856-6886  
e-mail: info@omega.ca

### **For immediate technical or application assistance:**

**U.S.A. and Canada:** Sales Service: 1-800-826-6342 / 1-800-TC-OMEGA®  
Customer Service: 1-800-622-2378 / 1-800-622-BEST®  
Engineering Service: 1-800-872-9436 / 1-800-USA-WHEN®  
TELEX: 996404 EASYLINK: 62968934 CABLE: OMEGA

**Mexico:**

En Español: (001) 203-359-7803 e-mail: espanol@omega.com  
FAX: (001) 203-359-7807 info@omega.com.mx

### **Servicing Europe:**

**Benelux:**

Postbus 8034, 1180 LA Amstelveen, The Netherlands  
TEL: +31 (0)20 3472121 FAX: +31 (0)20 6434643  
Toll Free in Benelux: 0800 0993344  
e-mail: sales@omegaeng.nl

**Czech Republic:**

Frystatska 184, 733 01 Karviná, Czech Republic  
TEL: +420 (0)59 6311899 FAX: +420 (0)59 6311114  
Toll Free: 0800-1-66342 e-mail: info@omegashop.cz

**France:**

11, rue Jacques Cartier, 78280 Guyancourt, France  
TEL: +33 (0)1 61 37 2900 FAX: +33 (0)1 30 57 5427  
Toll Free in France: 0800 466 342  
e-mail: sales@omega.fr

**Germany/Austria:**

Daimlerstrasse 26, D-75392 Deckenpfronn, Germany  
TEL: +49 (0)7056 9398-0 FAX: +49 (0)7056 9398-29  
Toll Free in Germany: 0800 639 7678  
e-mail: info@omega.de

**United Kingdom:**  
ISO 9002 Certified

One Omega Drive, River Bend Technology Centre  
Northbank, Irlam, Manchester  
M44 5BD United Kingdom  
TEL: +44 (0)161 777 6611 FAX: +44 (0)161 777 6622  
Toll Free in United Kingdom: 0800-488-488  
e-mail: sales@omega.co.uk

It is the policy of OMEGA Engineering, Inc. to comply with all worldwide safety and EMC/EMI regulations that apply. OMEGA is constantly pursuing certification of its products to the European New Approach Directives. OMEGA will add the CE mark to every appropriate device upon certification.

The information contained in this document is believed to be correct, but OMEGA accepts no liability for any errors it contains, and reserves the right to alter specifications without notice.

**WARNING:** These products are not designed for use in, and should not be used for, human applications.



## OM-EL-USB-RT Installation and Operation Guide

OM-EL-USB-RT has been designed to work with the following operating systems:

- Windows 2000
- Windows XP (Service Pack 2) (32-bit) with .NET framework Ver 2.0
- Windows Vista (32-bit)

1) Insert the OM-EL-USB-RT realtime data logger into a spare USB port in your PC. Windows will automatically detect and install the standard Windows driver.

2) Insert the OM-EL-USB-RT software CD into the CD drive of your computer. If the program does not start automatically, click **"Start"**, **"Run"** & type **"D:\OM-EL-USB-RT"** then click **"OK"**.

3) The software will install. Follow the on-screen prompts.

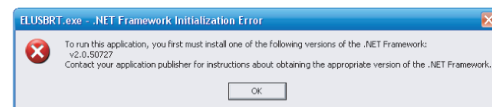
4) Once installed, the OM-EL-USB-RT software should automatically run. Icons will be displayed in the "notification area" of your screen and on the desktop.



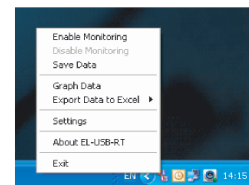
As seen on the desktop. As seen in the "notification area".

If the icon in the "notification area" does not appear, double click the OM-EL-USB-RT icon on the desktop.

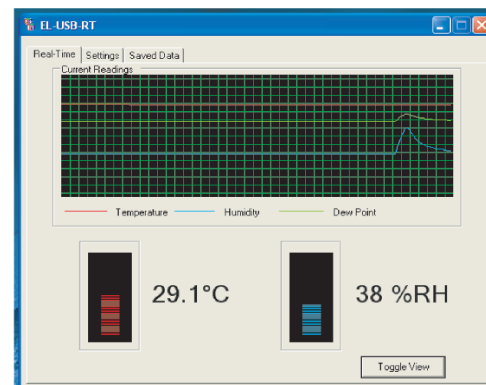
If the following error message appears, you will need to install .NET framework Ver 2.0, the redistributable of which is provided on the software CD, and is entitled: dotnetfx.exe.



5) To access the software features, right click on the icon within the "notification area". You will see the following menu;



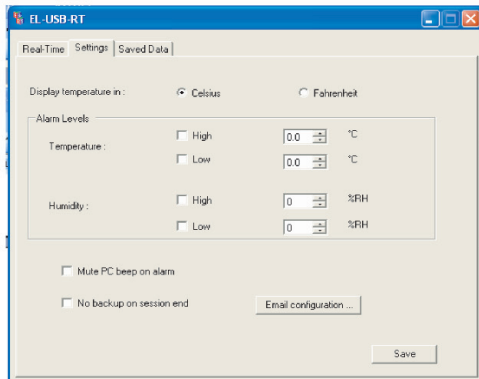
6) If **"Graph Data"** is selected, you will see the following;



This shows a rolling graph of the readings taken in the last 2½ minutes.

7) To view a detailed graph, click on **"Toggle View"**. This will display all the data recorded for the current session. This graph does not automatically update. To include the latest data readings select **"Update"**. To view an area of this graph in more detail, use the left mouse button to drag a rectangle around the region to be magnified. The previous view can be restored by clicking on **"Zoom Out"**.

8) Select **"Settings"** to change the scale and alarms as shown;



You can change the scale between Fahrenheit and Celsius, set alarms, mute the audible alarm, switch off automatic saving\* and gain access to the E-mail configuration section (see section 10 for E-mail configuration).

9) Other options can be accessed by right clicking on the icon in the "notification area", such as;

i) **"Enable Monitoring"** and **"Disable Monitoring"**; this starts and stops the software from taking readings.

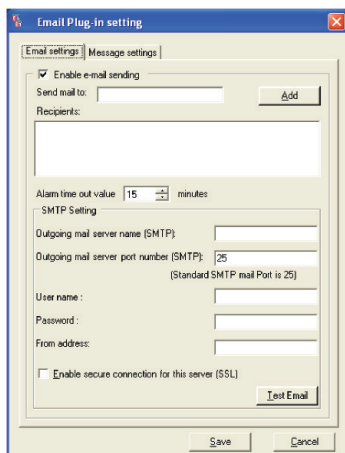
ii) **"Save Data"** ; this saves the data recorded so far. \*

iii) **"Export Data to Excel"**; this opens an Excel worksheet and automatically generates a graph.

iv) **"About OM-EL-USB-RT"**; this provides you with Lascar's contact details and the software version number.

v) **"Exit"**; this closes the OM-EL-USB-RT application.

10) The OM-EL-USB-RT can be configured to send an alert via E-mail in the event of an alarm condition being met. Click **"Settings"** to access E-mail configuration.



10a) The E-mail settings screen is detailed above;

i) Use the **"Enable E-mail Sending"** checkbox to enable/disable this feature.

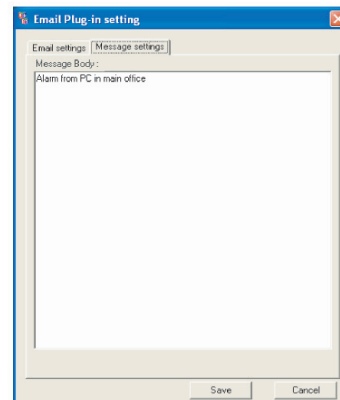
ii) Send mail to: Type an E-mail address into this box and click on **"Add"**. You can add multiple recipients. When you click on **"Add"**, the address will appear in the **"Recipients"** box. To delete from the list, select the address and press the **"Delete"** key on your keyboard.

iii) To configure E-mail alerts, you need to provide the SMTP details of your E-mail account. These include **"Outgoing mail server name (SMTP)"**, **"Outgoing mail server port number (SMTP)"**, **"User name"**, **"Password"**, **"From address"** and **"Enable secure connection for this server (SSL)"** settings.

This information can be found within your E-mail software's **"Tools"** menu or in the **"Options"** link if it is an internet based E-mail account.

10b) The **"Alarm timeout value"** determines the minimum interval between alert E-mails for each alarm set.

10c) The Message settings allow you to add additional text to your E-mail alert.



\* The current session data is stored in a temporary file. Unless the data is saved at the end of a session, this data will be lost.

If **"No backup on session end"** is not enabled, the user is prompted to save data at the end of the session.

The software records up to 32,000 readings. If the file becomes full during a session, the software will automatically save the temporary data file to the last used save directory and start a new session file.



## WARRANTY/DISCLAIMER

OMEGA ENGINEERING, INC. warrants this unit to be free of defects in materials and workmanship for a period of **13 months** from date of purchase. OMEGA's WARRANTY adds an additional one (1) month grace period to the normal **one (1) year product warranty** to cover handling and shipping time. This ensures that OMEGA's customers receive maximum coverage on each product.

If the unit malfunctions, it must be returned to the factory for evaluation. OMEGA's Customer Service Department will issue an Authorized Return (AR) number immediately upon phone or written request. Upon examination by OMEGA, if the unit is found to be defective, it will be repaired or replaced at no charge. OMEGA's WARRANTY does not apply to defects resulting from any action of the purchaser, including but not limited to mishandling, improper interfacing, operation outside of design limits, improper repair, or unauthorized modification. This WARRANTY is VOID if the unit shows evidence of having been tampered with or shows evidence of having been damaged as a result of excessive corrosion; or current, heat, moisture or vibration; improper specification; misapplication; misuse or other operating conditions outside of OMEGA's control. Components in which wear is not warranted, include but are not limited to contact points, fuses, and triacs.

**OMEGA is pleased to offer suggestions on the use of its various products. However, OMEGA neither assumes responsibility for any omissions or errors nor assumes liability for any damages that result from the use of its products in accordance with information provided by OMEGA, either verbal or written. OMEGA warrants only that the parts manufactured by the company will be as specified and free of defects. OMEGA MAKES NO OTHER WARRANTIES OR REPRESENTATIONS OF ANY KIND WHATSOEVER, EXPRESSED OR IMPLIED, EXCEPT THAT OF TITLE, AND ALL IMPLIED WARRANTIES INCLUDING ANY WARRANTY OF MERCHANTABILITY AND FITNESS FOR A PARTICULAR PURPOSE ARE HEREBY DISCLAIMED. LIMITATION OF LIABILITY: The remedies of purchaser set forth herein are exclusive, and the total liability of OMEGA with respect to this order, whether based on contract, warranty, negligence, indemnification, strict liability or otherwise, shall not exceed the purchase price of the component upon which liability is based. In no event shall OMEGA be liable for consequential, incidental or special damages.**

CONDITIONS: Equipment sold by OMEGA is not intended to be used, nor shall it be used: (1) as a "Basic Component" under 10 CFR 21 (NRC), used in or with any nuclear installation or activity; or (2) in medical applications or used on humans. Should any Product(s) be used in or with any nuclear installation or activity, medical application, used on humans, or misused in any way, OMEGA assumes no responsibility as set forth in our basic WARRANTY/DISCLAIMER language, and, additionally, purchaser will indemnify OMEGA and hold OMEGA harmless from any liability or damage whatsoever arising out of the use of the Product(s) in such a manner.

## RETURN REQUESTS/INQUIRIES

Direct all warranty and repair requests/inquiries to the OMEGA Customer Service Department. BEFORE RETURNING ANY PRODUCT(S) TO OMEGA, PURCHASER MUST OBTAIN AN AUTHORIZED RETURN (AR) NUMBER FROM OMEGA'S CUSTOMER SERVICE DEPARTMENT (IN ORDER TO AVOID PROCESSING DELAYS). The assigned AR number should then be marked on the outside of the return package and on any correspondence.

The purchaser is responsible for shipping charges, freight, insurance and proper packaging to prevent breakage in transit.

FOR **WARRANTY** RETURNS, please have the following information available BEFORE contacting OMEGA:

1. Purchase Order number under which the product was PURCHASED,
2. Model and serial number of the product under warranty, and
3. Repair instructions and/or specific problems relative to the product.

FOR **NON-WARRANTY** REPAIRS, consult OMEGA for current repair charges. Have the following information available BEFORE contacting OMEGA:

1. Purchase Order number to cover the COST of the repair,
2. Model and serial number of the product, and
3. Repair instructions and/or specific problems relative to the product.

OMEGA's policy is to make running changes, not model changes, whenever an improvement is possible. This affords our customers the latest in technology and engineering.

OMEGA is a registered trademark of OMEGA ENGINEERING, INC.

© Copyright 2004 OMEGA ENGINEERING, INC. All rights reserved. This document may not be copied, photocopied, reproduced, translated, or reduced to any electronic medium or machine-readable form, in whole or in part, without the prior written consent of OMEGA ENGINEERING, INC.



# Where Do I Find Everything I Need for Process Measurement and Control? **OMEGA...Of Course!** *Shop online at [omega.com](http://omega.com)*

## **TEMPERATURE**

- ☑ Thermocouple, RTD & Thermistor Probes, Connectors, Panels & Assemblies
- ☑ Wire: Thermocouple, RTD & Thermistor
- ☑ Calibrators & Ice Point References
- ☑ Recorders, Controllers & Process Monitors
- ☑ Infrared Pyrometers

## **PRESSURE, STRAIN AND FORCE**

- ☑ Transducers & Strain Gages
- ☑ Load Cells & Pressure Gages
- ☑ Displacement Transducers
- ☑ Instrumentation & Accessories

## **FLOW/LEVEL**

- ☑ Rotameters, Gas Mass Flowmeters & Flow Computers
- ☑ Air Velocity Indicators
- ☑ Turbine/Paddlewheel Systems
- ☑ Totalizers & Batch Controllers

## **pH/CONDUCTIVITY**

- ☑ pH Electrodes, Testers & Accessories
- ☑ Benchtop/Laboratory Meters
- ☑ Controllers, Calibrators, Simulators & Pumps
- ☑ Industrial pH & Conductivity Equipment

## **DATA ACQUISITION**

- ☑ Data Acquisition & Engineering Software
- ☑ Communications-Based Acquisition Systems
- ☑ Plug-in Cards for Apple, IBM & Compatibles
- ☑ Datalogging Systems
- ☑ Recorders, Printers & Plotters

## **HEATERS**

- ☑ Heating Cable
- ☑ Cartridge & Strip Heaters
- ☑ Immersion & Band Heaters
- ☑ Flexible Heaters
- ☑ Laboratory Heaters

## **ENVIRONMENTAL MONITORING AND CONTROL**

- ☑ Metering & Control Instrumentation
- ☑ Refractometers
- ☑ Pumps & Tubing
- ☑ Air, Soil & Water Monitors
- ☑ Industrial Water & Wastewater Treatment
- ☑ pH, Conductivity & Dissolved Oxygen Instruments

**M4670/0609**