

# OM-EL-21CFR

## Quick Start Guide



### DOWNLOAD & INSTALL Omega 21CFR SOFTWARE

Windows 7, 8 & 10 (32 & 64bit)

Visit [www.omega.com](http://www.omega.com) and click on the download link.

Double click on the downloaded **Omega 21CFR Installer.exe** file, and follow the on screen prompts.

#### Omega 21CFR Windows Control Software

Omega 21CFR is the software platform for Omega's 21 CFR compliant range of data loggers

 Click here to download the EasyLog 21CFR Software



To see how Omega 21CFR Software meets the regulations, view the checklist at [www.omega.com](http://www.omega.com)

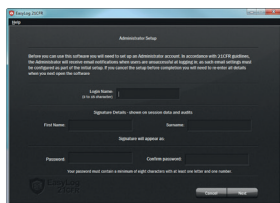
## FIRST TIME SETUP

- Double click on the Omega 21CFR icon on your desktop.



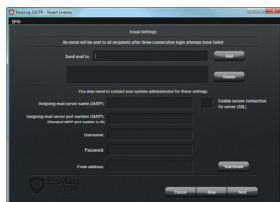
### 1 Administrator Setup

- You will need to create an Administrator for the software by filling in the required information in the setup wizard. Make sure you keep a note of your login details!



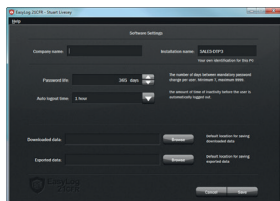
### 2 Email Settings

- You may need to ask your IT support or email service provider for the required details. More information can be found in the software's helpfile. If you aren't sure of the details, you can skip this step and come back to it later.



### 3 Software Settings

- These are global settings that apply to all users of the software, some of which are required as part of the 21CFR standard.

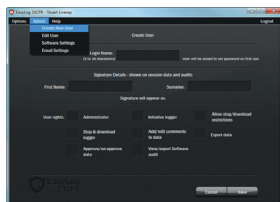


### 4 Create Additional Users

- Additional users can then be set up from the Admin menu if required. New users will be asked to create a password when they first log in.

**You are now ready to start data logging with Omega 21CFR**

For more information on how to use Omega 21CFR, please see the help file in the software. This can be found by clicking 'Help' > 'Help Topics'.

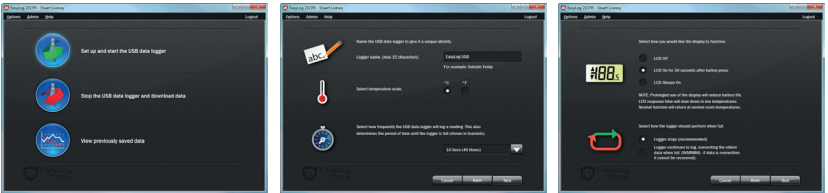


# REPLACING YOUR DATA LOGGER'S BATTERY

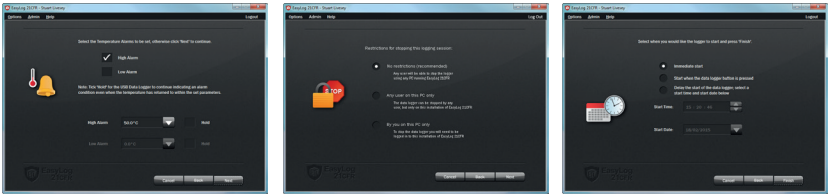
Your data logger is provided with a 3.6V 1/2AA battery already installed. You can change the battery by following the instructions below.



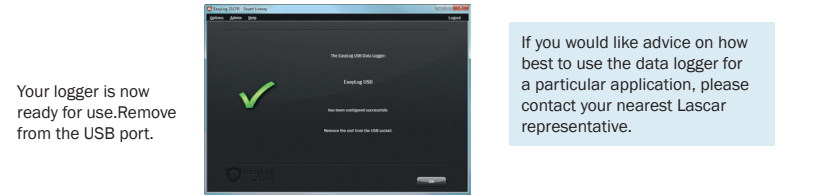
# STARTING YOUR DATA LOGGER



Click on the 'Set up and start the USB data logger' button. Name your logger and select the logging rate. Select how the LCD should function, and what happens when your logger is full.




Set high and low alarms if required. Set restrictions for stopping the logging session. Select when you would like the logging session to start.



Your logger is now ready for use. Remove from the USB port.



If you would like advice on how best to use the data logger for a particular application, please contact your nearest Lascar representative.

# IMPORTANT SAFETY INFORMATION



**Repairing or Modifying**

Never attempt to repair or modify Lascar products. Dismantling them, other than for the purpose of changing replaceable batteries, may cause damage that is not covered under the warranty. Servicing should only be provided by an authorized supplier.



**Disposal and Recycling Information**

You must dispose of Lascar products in accordance with relevant laws and regulations. They contain electronic components and lithium batteries and therefore must be disposed of separately from household waste.

For more information, and to download the latest version of the software free of charge, visit: [www.omega.com](http://www.omega.com)



Disclaimer: Every effort has been made to ensure the accuracy of this publication and no responsibility or liability can be accepted by Omega for any errors or omissions in the content of this document. Data and legislation may change, and so we strongly advise you to obtain and review the most recently issued regulations, standards, and guidelines. This publication does not form the basis of a contract.