

ALPHA TECHNICS

HH42A Tools

For Omega HH42A Thermometers

User's Manual for Version 1.0

November, 2018

Table of Contents

1. Introduction:	2
2. Installing the Software:	2
3. Using the Software:.....	4

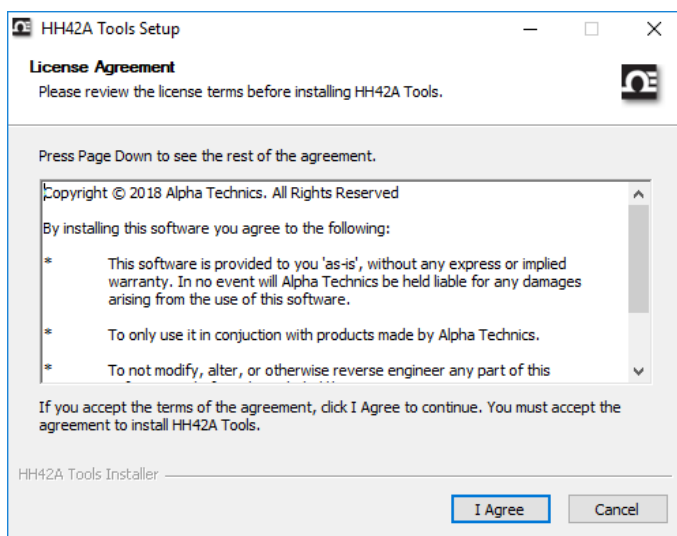
1. Introduction:

HH42A Tools is a program provided for Omega to give its customers the ability to modify the automatic shut-down feature of HH42A thermometers.

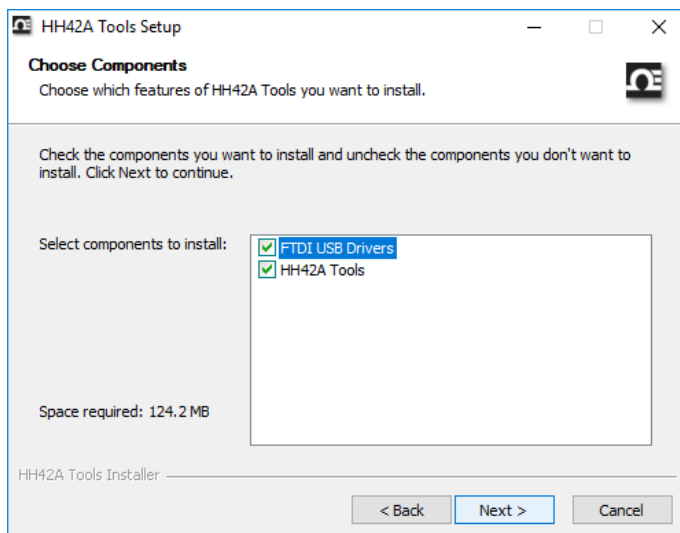
2. Installing the Software:

To install HH42A Tools, do the following:

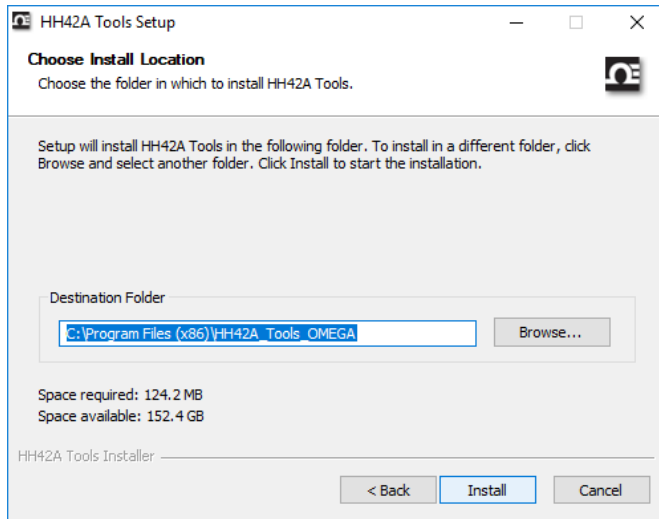
- Locate and double-click the file named “HH42A_Tools_Setup.exe”.
- You will be asked to provide permission, please accept to proceed to the next window.
- You will be presented with the License Agreement as shown below. Read it and click “I Agree” to continue:



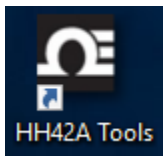
Next you will be presented with a window that asks you to choose the components to install as shown below. Click next to proceed with the installation:



- d. A window asking you for the location will appear. Keep the default location, and click “Install” to install the program.

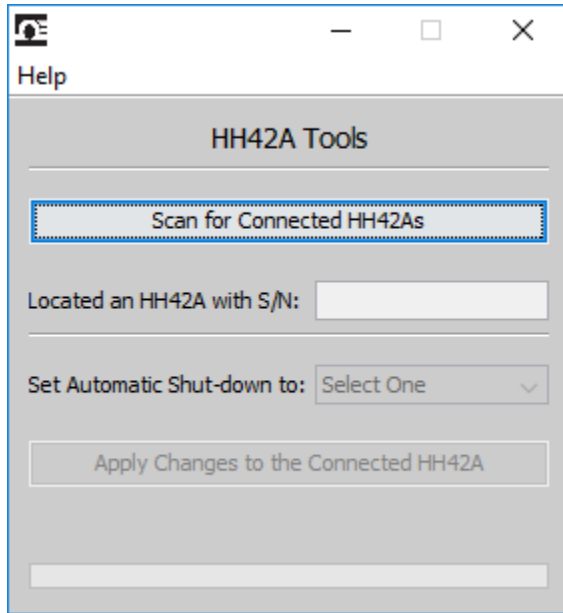


- e. The driver installation wizard will start. Click the “Extract” button to start driver installation.
- f. Click the “Next” button to proceed.
- g. Select “I accept this agreement” and click “Next” to continue.
- h. Click “Finish” when the driver installation is complete.
- i. A message will appear informing you that the installation is complete. Click “OK” to finish. An icon as shown below should appear on your desktop:



3. Using the Software:

To run the software, double-click the “HH42A Tools” icon on your desktop. The main window will appear as shown below:



To change the automatic shut-down feature of an HH42A thermometer, do the following:

1. Connect the thermometer to the computer.
2. Wait for ~30 seconds to allow for the drivers to be installed and utilized.
3. Click the “Scan for Connected HH42As” button. After scanning is complete, the serial number of the device will be displayed.
4. Use the drop-down list next to “Set Automatic Shut-down to:” to select the option that best fits your needs.
5. Click the “Apply Changes to the Connected HH42A” button to apply the selected option.
6. A “Process completed successfully” message will appear when programming the devices is complete. Click “OK” to complete the process. Changes take effect after the thermometer is turned off and then turned on again.