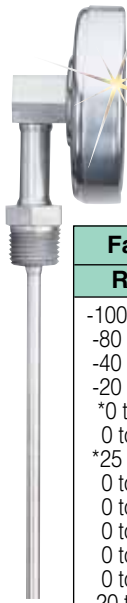


Models X, XR, V and VR

Heads: X, XR: 3" OD
V, VR: 5" OD

Normally supplied with 1/2" NPT Mounting;
1/4" NPT or 3/4" NPT Thread Optional.
Made Entirely of Stainless Steel,
Hermetically Sealed.

X, XR, V and VR
Ranges and °Divisions



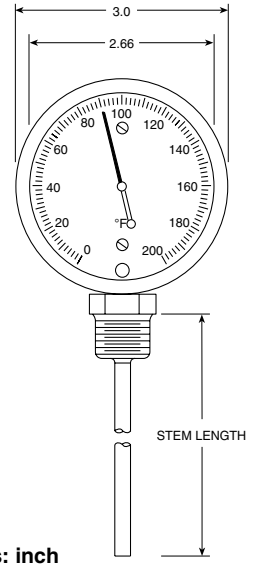
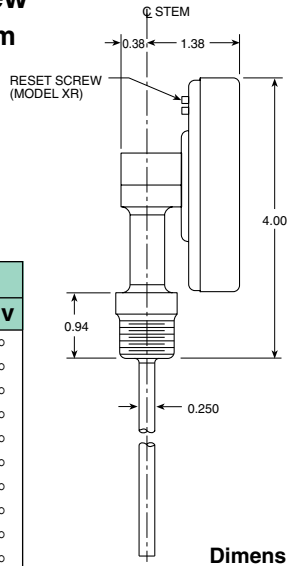
Fahrenheit		Celsius	
Range	Div	Range	Div
-100 to 100°F	2°	-50 to 200°C	2°
-80 to 120°F	2°	-50 to 100°C	2°
-40 to 160°F	2°	-50 to 50°C	1°
-20 to 120°F	2°	-40 to 70°C	1°
*0 to 100°F	1°	-40 to 160°C	2°
0 to 140°F	2°	*-30 to 30°C	1°
*25 to 125°F	1°	-20 to 120°C	2°
0 to 150°F	1°	-10 to 110°C	1°
0 to 200°F	2°	*0 to 50°C	1/2°
0 to 220°F	2°	0 to 100°C	1°
0 to 250°F	2°	0 to 150°C	1°
0 to 300°F	2°	0 to 200°C	2°
20 to 240°F	2°	0 to 300°C	2°
-50 to 300°F	5°	0 to 400°C	5°
50 to 300°F	2°	100 to 500°C	5°
50 to 400°F	5°	-80 to 220°C	5°
50 to 500°F	5°	†-20 to 220°C	5°
50 to 550°F	5°	*0 to 30°C	5°
50 to 750°F	10°	*0 to 60°C	5°
100 to 800°F	10°	0 to 250°C	5°
150 to 750°F	10°	*50 to 450°C	5°
200 to 1000°F	10°	100 to 550°C	5°
**250 to 600°F	10°		
-100 to 200°F	10°		
-70 to 150°F	10°		
†200 to 300°F	10°		
‡300 to 400°F	10°		

Fahrenheit		Celsius	
Range	Div	Range	Div
-50 to 210°F	5°	-50 to 100°C	2°
-100 to 100°F	2°	-70 to 40°C	1°
*25 to 125°F	1°	-5 to 50°C	1°
-40 to 160°F	2°	-40 to 70°C	1°
0 to 200°F	2°	-10 to 90°C	1°
0 to 250°F	2°	-20 to 120°C	2°
50 to 300°F	2°	10 to 150°C	2°
50 to 500°F	5°	10 to 260°C	5°
50 to 550°F	5°	10 to 290°C	5°
150 to 750°F	10°	70 to 400°C	5°
200 to 1000°F	10°	100 to 500°C	5°
0 to 150°F	10°	-20 to 70°C	5°
20 to 240°F	10°	-10 to 115°C	5°
50 to 400°F	10°	10 to 200°C	5°
**200 to 1000°F	10°	100 to 550°C	5°

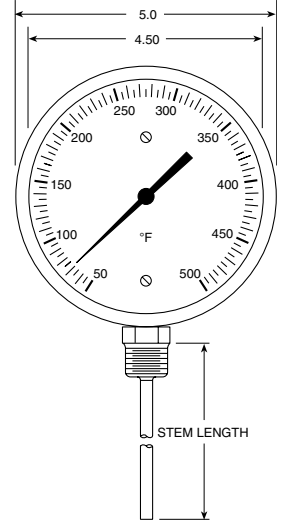
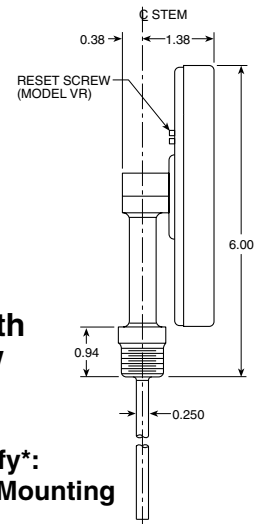
Dual Range			
°F	Div.	°C	Div
-50 to 210°F	5°	-50 to 100°C	2°
-100 to 100°F	2°	-70 to 40°C	1°
*25 to 125°F	1°	-5 to 50°C	1°
-40 to 160°F	2°	-40 to 70°C	1°
0 to 200°F	2°	-10 to 90°C	1°
0 to 250°F	2°	-20 to 120°C	2°
50 to 300°F	2°	10 to 150°C	2°
50 to 500°F	5°	10 to 260°C	5°
50 to 550°F	5°	10 to 290°C	5°
150 to 750°F	10°	70 to 400°C	5°
200 to 1000°F	10°	100 to 500°C	5°
0 to 150°F	10°	-20 to 70°C	5°
20 to 240°F	10°	-10 to 115°C	5°
50 to 400°F	10°	10 to 200°C	5°
**200 to 1000°F	10°	100 to 550°C	5°

* Minimum stem length 4".
** Range available in X and XR models only.
† Range available in V and VR models only.

Model XR With Reset Screw With 6" Stem



Dimensions: inch



Model VR With Reset Screw With 6" Stem

To order X, XR, V and VR, specify*:
Model - Range - Stem Length - Mounting

Ordering Examples: XR-0-100F-6-1/2, model XR with 0 to 100°F range, 6" stem and 1/2" NPT bushing.

XR-0-150C-4-1/2, model XR with 0 to 150°C range, 4" stem and 1/2" NPT mounting.

X-0-100F-4-1/2, model X with 0 to 100°F range, 4" stem and 1/2" NPT mounting.

* For stem lengths, pricing visit us online

Thermometers of this design are well adapted to installation on top of tanks, boilers, in high locations or other areas where it would be difficult to read a standard angle-form instrument.

Stems are 1/4" in diameter. Stem lengths up to 36" can be supplied.

Normally supplied with the stem at the BOTTOM (6 o'clock) position, to order special positions add the bolded suffix. These thermometers can be set with the stem protruding at: **"-LEFT"** (9 o'clock), **"-TOP"** (12 o'clock) or **"-RIGHT"** (3 o'clock) positions. If not specified, the standard BOTTOM (6 o'clock)



J-SF shown smaller than actual size.

Silicone-Filled Thermometers

Silicone-filled thermometers are offered for severe industrial applications, where vibration is a problem. Silicone dampening prolongs instrument life by preventing wear and fatigue in the instrument's internal parts. The silicone also improves readability by reducing pointer flutter, and promotes faster temperature response.

Any Pro/Temp 3 or 5" dial bi-metal thermometer can be silicone filled, in any stem length, and any temperature range up to 500°F. (Silicone filling with ranges over 500°F is not recommended.) All silicone-filled thermometers come with a durable polycarbonate crystal. Also available with Models G

To order Silicon-Filled, specify: the thermometer per its ordering example and add suffix **"-SF"** to model number.

See accessories and options available online