

Models Q and QP

Model Q

\$37

With 6" Stem



Head 1.16" O.D.

Used by inspectors, technicians, maintenance and service men for general testing and checking of refrigeration, hot asphalt, dairy and food products, air conditioning systems, stack temperatures and hundreds of other uses where a quick temperature indication is needed.

Made entirely of corrosion resistant stainless steel (except optically clear crystal and aluminum dial). Brightly polished head, bezel and stem for sanitation and easy cleaning.

MOST POPULAR MODELS HIGHLIGHTED!

Ranges and °Divisions

Fahrenheit		Celsius		Dual	
Range	Div	Range	Div	Range	Div
*25 to 125°F	1°	-40 to 70°C	1°	0 to 200°F	2°
-40 to 160°F	2°	0 to 100°C	1°	-10 to 90°C	1°
0 to 200°F	2°	-10 to 110°C	1°	50 to 500°F	5°
0 to 250°F	2°	0 to 150°C	1°	10 to 260°C	5°
50 to 300°F	2°	0 to 300°C	1°	200 to 1000°F	10°
50 to 500°F	5°	50 to 400°C	5°	100 to 500°C	10°
150 to 750°F	10°				
200 to 1000°F	10°				

* Minimum stem length 4".

To order Q, specify*:

Model - Range - Stem Length - Mounting

Ordering Examples: Q--40-160F-9-PLAIN, model Q with -40 to 160°F range, 9" stem and plain bushing, \$40.

Reset bushing now available, consult Sales Department.

Q-0-200F-4-1/2, model Q with 0 to 200°F range, 4" stem and 1/2 NPT mounting, \$40.

Q-0-200F-4-1/4, model Q with 0 to 200°F range, 4" stem and 1/4 NPT mounting, \$40.

* For stem lengths and pricing, see page E-12.

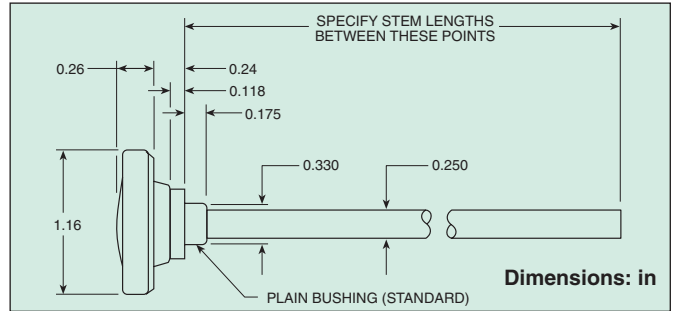
To order QP, specify: Model - Range

Ordering Example: QP-25-125F, model QP with 25 to 125°F range, \$37. Reset bushing standard (on QP models), 5" stem length. Pointed stem available, add "-PS" and \$4 to price.

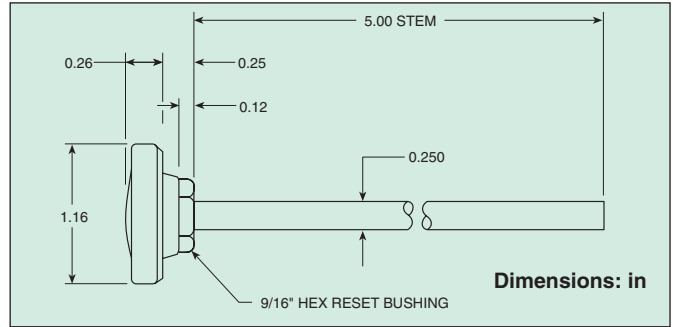


Model QP
\$37

With 5" Stem and Pocket Case



Model Q, for stem lengths and pricing, see page E-12



Model QP, only 5" stem length available, \$37

A handy, strong pocket case (with pen type clip for safe pocket carrying that prevents accidental loss) is supplied when ordering the Model "QP".



Model G

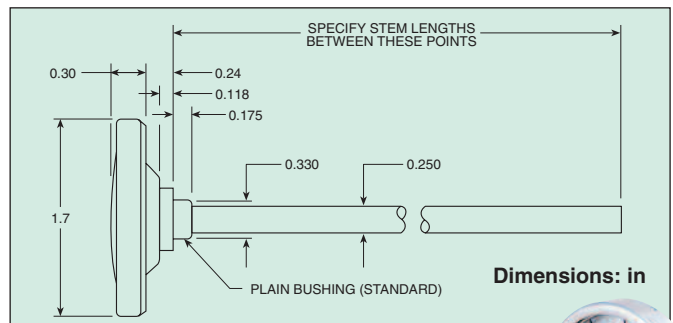
All Stainless Steel (except dial)
Head 1.73" O.D.

Ranges and °Divisions

Fahrenheit		Celsius		Dual	
Range	Div	Range	Div	Range	Div
*25 to 125°F	1°	-50 to 50°C	1°	0 to 200°F	2°
-100 to 100°F	2°	-50 to 100°C	2°	-10 to 90°C	2°
-40 to 160°F	2°	-40 to 70°C	1°	50 to 500°F	5°
0 to 200°F	2°	0 to 100°C	2°	10 to 260°C	5°
0 to 250°F	2°	-10 to 110°C	1°	200 to 1000°F	2°
20 to 240°F	2°	-20 to 120°C	1°	100 to 500°C	1°
50 to 300°F	2°	*0 to 50°C	1°	-100 to 100°F	2°
50 to 500°F	5°	0 to 150°C	1°	-70 to 40°C	2°
100 to 800°F	10°	0 to 300°C	5°	-40 to 160°F	5°
150 to 750°F	10°	0 to 400°C	5°	-40 to 70°C	5°
200 to 1000°F	10°	50 to 400°C	5°	20 to 240°F	10°
0 to 220°F	10°	0 to 200°C	5°	-10 to 115°C	10°
-50 to 300°F	10°			*25 to 125°F	10°
				-5 to 50°C	10°
				50 to 300°F	10°
				10 to 150°C	10°

* Minimum stem length 4".

MOST POPULAR RANGES HIGHLIGHTED!



Model G
\$39

With 6" Stem

To order G, specify*:
Model - Range - Stem Length - Mounting

Ordering Examples: G--40-160F-9-PLAIN, model G with -40 to 160°F range, 9" stem and plain bushing, \$43.

External mounting bracket available \$6. Reset bushing now available, consult Sales Department.

G-0-100C-21/2-1/4, model G with 0 to 100°C range, 2 1/2" stem and 1/4 NPT mounting, \$52.

* For stem lengths and pricing, see page E-12.



Model H

All Stainless Steel (except dial)
Head 2.37" O.D.

Model H
\$42
With 6" Stem



Shown smaller than actual size.



To order H, specify*: Model - Range - Stem Length - Mounting

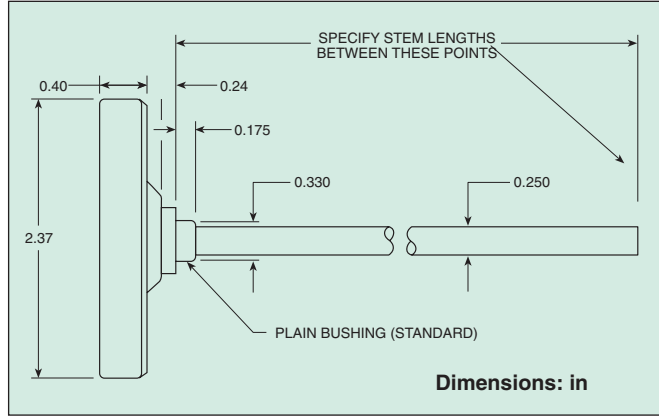
Ordering Examples: H-0-100F-9-PLAIN, Model H with 0 to 100°F range, 9" stem and plain bushing, \$45.

External mounting bracket available, \$6. Reset bushing now available, consult Sales Department.

H-0-250F-21/2-1/2, model H with 0 to 250°F range, 2 1/2" stem and 1/2 NPT mounting, \$46.

H-0-50C-4-3/8, model H with 0 to 50°C range, 4" stem and 3/8 NPT mounting, \$46.

* For stem lengths and pricing, see page E-12.



Ranges and °Divisions

MOST POPULAR MODELS HIGHLIGHTED!

Fahrenheit	
Range	Div
*25 to 125°F	1°
-100 to 100°F	2°
-80 to 120°F	2°
-40 to 160°F	2°
0 to 200°F	2°
0 to 250°F	2°
20 to 240°F	2°
50 to 300°F	2°
50 to 500°F	5°
100 to 800°F	10°
150 to 750°F	10°
200 to 1000°F	10°
-50 to 300°F	10°
0 to 220°F	10°
50 to 550°F	10°
50 to 650°F	10°

Celsius	
Range	Div
-50 to 50°C	1°
-50 to 100°C	2°
-40 to 70°C	1°
0 to 100°C	1°
-10 to 110°C	1°
-20 to 120°C	1°
*0 to 50°C	1°
0 to 150°C	1°
0 to 300°C	5°
0 to 400°C	5°
50 to 400°C	5°
100 to 500°C	5°
0 to 200°C	5°

* Minimum stem length 4".

Dual	
Range	Div
50 to 500°F	2°
10 to 260°C	1°
200 to 1000°F	2°
100 to 500°C	2°
-100 to 100°F	2°
-70 to 40°C	2°
50 to 300°F	2°
10 to 150°C	2°
0 to 250°F	2°
-20 to 120°C	5°
-40 to 160°F	10°
-40 to 70°C	10°
20 to 240°F	2°
-10 to 115°C	1°
*25 to 125°F	2°
-5 to 50°C	1°

Lab and Test Thermometers Models GL and HL

Heads: GL-1.73" O.D.
HL-2.37" O.D. 8" Stem



Made entirely of Stainless Steel (except dial). Ideal for lab or testing air, asphalt, babbitt, cement, chemicals, food, water, waste, etc. Only available in 8" stem length as plain, no threads, no options. Clear, easy to read.

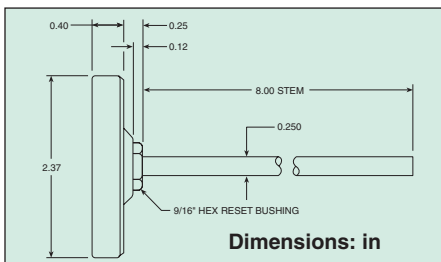
To order GL and HL, specify: Model - Range

Ordering Examples: GL-0-200F, model GL with 0 to 200°F range, \$39. Reset bushing standard. Pointed stem available, add "-PS" and \$4 to price.

HL-0-400C, model HL with 0 to 400°C range, 8" stem and plain bushing, \$42.

"GL" Ranges and °Divisions

Fahrenheit		Celsius		Dual	
Range	Div	Range	Div	Range	Div
25 to 125°F	1°	-50 to 50°C	1°	0 to 200°F	2°
-100 to 100°F	2°	-50 to 100°C	2°	-10 to 90°C	2°
-40 to 160°F	2°	-40 to 70°C	1°	50 to 500°F	2°
0 to 200°F	2°	0 to 100°C	2°	10 to 260°C	2°
0 to 250°F	2°	-10 to 110°C	1°	200 to 1000°F	2°
20 to 240°F	2°	-20 to 120°C	1°	100 to 500°C	1°
50 to 300°F	2°	0 to 50°C	1°	-100 to 100°F	2°
50 to 500°F	5°	0 to 150°C	1°	-70 to 40°C	2°
100 to 800°F	10°	0 to 300°C	5°	-40 to 160°F	5°
150 to 750°F	10°	0 to 400°C	5°	-40 to 70°C	5°
200 to 1000°F	10°	50 to 400°C	5°	20 to 240°F	10°
0 to 220°F	10°	0 to 200°C	5°	-10 to 115°C	10°
-50 to 300°F	10°			25 to 125°F	10°
				-5 to 50°C	10°
				50 to 300°F	10°
				10 to 150°C	10°



Model GL Model HL
\$39 **\$42**
1.73" Head 2.37" Head



"HL" Ranges and °Divisions

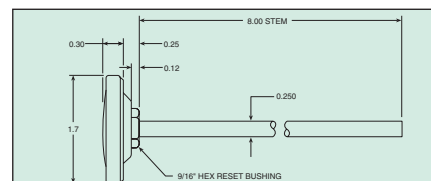
MOST POPULAR MODELS HIGHLIGHTED!

Fahrenheit	
Range	Div
25 to 125°F	1°
-100 to 100°F	2°
-80 to 120°F	2°
-40 to 160°F	2°
0 to 200°F	2°
0 to 250°F	2°
20 to 240°F	2°
50 to 300°F	2°
50 to 500°F	5°
100 to 800°F	10°
150 to 750°F	10°
200 to 1000°F	10°
-50 to 300°F	10°
0 to 220°F	10°
50 to 550°F	10°
50 to 650°F	10°

Celsius	
Range	Div
-50 to 50°C	1°
-50 to 100°C	2°
-40 to 70°C	1°
0 to 100°C	1°
-10 to 110°C	1°
-20 to 120°C	1°
*0 to 50°C	1°
0 to 150°C	1°
0 to 300°C	5°
0 to 400°C	5°
50 to 400°C	5°
100 to 500°C	5°
0 to 200°C	5°

* Minimum Stem Length - 4"

Dual	
Range	Div
50 to 500°F	2°
10 to 260°C	1°
200 to 1000°F	2°
100 to 500°C	2°
-100 to 100°F	2°
-70 to 40°C	2°
50 to 300°F	2°
10 to 150°C	2°
0 to 250°F	5°
-20 to 120°C	5°
-40 to 160°F	10°
-40 to 70°C	10°
20 to 240°F	2°
-10 to 115°C	1°
25 to 125°F	2°
-5 to 50°C	1°



Dimensions: in



UNITED STATES

www.omega.com
1-800-TC-OMEGA
Stamford, CT.

CANADA

www.omega.ca
Laval(Quebec)
1-800-TC-OMEGA

GERMANY

www.omega.de
Deckenpfronn, Germany
0800-8266342

UNITED KINGDOM

www.omega.co.uk
Manchester, England
0800-488-488

FRANCE

www.omega.fr
Guyancourt, France
088-466-342

CZECH REPUBLIC

www.omegaeng.cz
Karviná, Czech Republic
596-311-899

BENELUX

www.omega.nl
Amstelveen, NL
0800-099-33-44



More than 100,000 Products Available!

• Temperature

Calibrators, Connectors, General Test and Measurement Instruments, Glass Bulb Thermometers, Handheld Instruments for Temperature Measurement, Ice Point References, Indicating Labels, Crayons, Cements and Lacquers, Infrared Temperature Measurement Instruments, Recorders Relative Humidity Measurement Instruments, RTD Probes, Elements and Assemblies, Temperature & Process Meters, Timers and Counters, Temperature and Process Controllers and Power Switching Devices, Thermistor Elements, Probes and Assemblies, Thermocouples Thermowells and Head and Well Assemblies, Transmitters, Wire

• Flow and Level

Air Velocity Indicators, Doppler Flowmeters, Level Measurement, Magnetic Flowmeters, Mass Flowmeters, Pitot Tubes, Pumps, Rotameters, Turbine and Paddle Wheel Flowmeters, Ultrasonic Flowmeters, Valves, Variable Area Flowmeters, Vortex Shedding Flowmeters

• pH and Conductivity

Conductivity Instrumentation, Dissolved Oxygen Instrumentation, Environmental Instrumentation, pH Electrodes and Instruments, Water and Soil Analysis Instrumentation

• Data Acquisition

Auto-Dialers and Alarm Monitoring Systems, Communication Products and Converters, Data Acquisition and Analysis Software, Data Loggers Plug-in Cards, Signal Conditioners, USB, RS232, RS485 and Parallel Port Data Acquisition Systems, Wireless Transmitters and Receivers

• Pressure, Strain and Force

Displacement Transducers, Dynamic Measurement Force Sensors, Instrumentation for Pressure and Strain Measurements, Load Cells, Pressure Gauges, Pressure Reference Section, Pressure Switches, Pressure Transducers, Proximity Transducers, Regulators, Strain Gages, Torque Transducers, Valves

• Heaters

Band Heaters, Cartridge Heaters, Circulation Heaters, Comfort Heaters, Controllers, Meters and Switching Devices, Flexible Heaters, General Test and Measurement Instruments, Heater Hook-up Wire, Heating Cable Systems, Immersion Heaters, Process Air and Duct, Heaters, Radiant Heaters, Strip Heaters, Tubular Heaters