

SELF-ADJUSTING WEIGH ASSEMBLIES

WITH LC501/LCM501 SERIES LOAD CELL INCLUDED

STANDARD AND METRIC MODELS

TWA5/TWAM5 (Nickel-Plated Carbon Steel)
TWA6/TWAM6 (Stainless Steel)
0-100 lb to 0-20,000 lb
0-25 kgf to 0-10,000 kgf

METRIC
 TWAM5-250 shown smaller than actual size, includes LCM501-250 load cell.



TWA5/TWAM5
TWA6/TWAM6



Standard

- Heavy-Duty Design
- For Tank and Bin Weighing
- Self-Adjusting for Accurate Measurements
- Highly Corrosion-Resistant Materials
- Shipped Fully Assembled, Including Load Cell
- 5-Point Calibration Provided
- 150% Compression Overload
- Ideal for Multicell Installations

SPECIFICATIONS

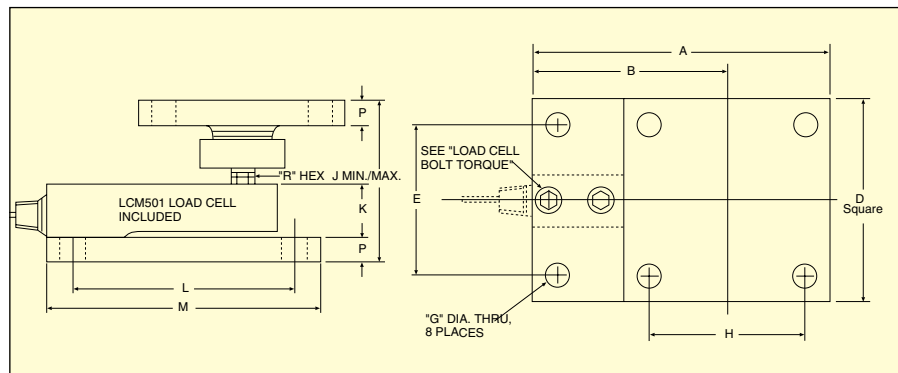
Non-Parallel Mounting:
 Self-adjusting for surfaces up to 2°

Thermal Expansion:
 Self-adjusting for up to ±1.6 mm

Height: Adjustable per dimension "J"

| Weight: (Including Load Cell) | Standard Range | kgf (lb) |
|-------------------------------|----------------|-----------|
| 100 to 750 | | 4.5 (10) |
| 1000 to 5000 | | 10.5 (23) |
| 10,000 | | 11.5 (25) |
| 20,000 | | 25 (55) |
| Metric Range | kgf (lb) | |
| 25 to 250 | 4.5 (10) | |
| 500 to 2500 | 10.5 (23) | |
| 5000 | 11.5 (25) | |
| 10,000 | 25 (55) | |

5-Point Calibration (in Compression):
 0%, 50%, 100%, 50%, 0%



Dimensions: mm (inch)

| CAPACITY kgf (lb) | A | B | D | E | G | H | J | K | L | M | P | R | TORQUE N-m (ft-lb) |
|-------------------------|------------|------------|-------------|-------------|-------------|-------------|----------------------|-------------|--------------|-------------|-------------|-------------|--------------------|
| ≤375 (≤750) | 146 (5.75) | 102 (4.00) | 88.9 (3.50) | 63.5 (2.50) | 13.5 (0.53) | 63.5 (2.50) | 95.3/102 (3.75/4.00) | 25.4 (1.00) | 101.6 (4.00) | 127 (5.00) | 12.7 (0.50) | 14.2 (0.56) | 30 (22) |
| 500 to 2.5K (1 K to 5K) | 222 (8.75) | 146 (5.75) | 152 (6.00) | 114 (4.50) | 17.3 (0.68) | 114 (4.50) | 121/127 (4.75/5.00) | 38.1 (1.50) | 165.1 (6.50) | 203 (8.00) | 19 (0.75) | 14.2 (0.56) | 76 (56) |
| 5K (10K) | 248 (9.75) | 171 (6.75) | 152 (6.00) | 114 (4.50) | 17.3 (0.68) | 114 (4.50) | 127/133 (5.00/5.25) | 38.1 (1.50) | 165.1 (6.50) | 203 (8.00) | 19 (0.75) | 22.4 (88) | 245 (180) |
| 10K (20K) | 318 (12.5) | 216 (8.50) | 203 (8) | 140 (5.50) | 20.6 (0.81) | 140 (5.50) | 184/191 (7.25/7.50) | 63.5 (2.50) | 203 (8.00) | 254 (10.00) | 25.4 (1.00) | 28.4 (1.12) | 245 (180) |

SELF-ADJUSTING WEIGH ASSEMBLIES

To Order

| CAPACITY | | WEIGHING ASSEMBLIES WITH LOAD CELL | | REPLACEMENT LOAD CELL MODEL NO. |
|---------------|--------|------------------------------------|------------------------------|------------------------------------|
| | | CARBON STEEL MODEL NO. | STAINLESS STEEL MODEL NO. | |
| kgf | lb | STANDARD MODELS | | |
| 45 | 100 | TWA5-100 | TWA6-100 | LC501-100 |
| 91 | 200 | TWA5-200 | TWA6-200 | LC501-200 |
| 227 | 500 | TWA5-500 | TWA6-500 | LC501-500 |
| 341 | 750 | TWA5-750 | TWA6-750 | LC501-750 |
| 455 | 1000 | TWA5-1K | TWA6-1K | LC501-1K |
| 909 | 2000 | TWA5-2K | TWA6-2K | LC501-2K |
| 1361 | 3000 | TWA5-3K | TWA6-3K | LC501-3K |
| 2269 | 5000 | TWA5-5K | TWA6-5K | LC501-5K |
| 4537 | 10,000 | TWA5-10K | TWA6-10K | LC501-10K |
| 9074 | 20,000 | TWA5-20K | TWA6-20K | LC501-20K |
| METRIC MODELS | | | | |
| 25 | 55 | TWAM5-25 | TWAM6-25 | LCM501-25 |
| 50 | 110 | TWAM5-50 | TWAM6-50 | LCM501-50 |
| 100 | 220 | TWAM5-100 | TWAM6-100 | LCM501-100 |
| 250 | 551 | TWAM5-250 | TWAM6-250 | LCM501-250 |
| 500 | 1102 | TWAM5-500 | TWAM6-500 | LCM501-500 |
| 1000 | 2205 | TWAM5-1K | TWAM6-1K | LCM501-1K |
| 2500 | 5512 | TWAM5-2.5K | TWAM6-2.5K | LCM501-2.5K |
| 5000 | 11,023 | TWAM5-5K | TWAM6-5K | LCM501-5K |
| 10,000 | 22,046 | TWAM5-10K | TWAM6-10K | LCM501-10K |

Note: Weighing assembly is shipped fully assembled including the load cell. Load cell comes with 5-point NIST-traceable calibration and 59 kΩ shunt data. LC501 series load cell will be installed into the TWA module.

Ordering Examples: TWA6-5K, 5000 lb weighing assembly in stainless steel with, LC501-5K load cell included.

TWA5-750, 750 lb weighing assembly in carbon steel with LC501-750 load cell included.

TWAM6-2.5K, 2500 kgf capacity stainless steel weighing assembly with LCM501-2.5K, load cell (included).

TWAM5-250, 250 kgf capacity carbon steel weighing assembly with LCM501-250, load cell (included).

COMPATIBLE METERS/CONTROLLERS FOR PX309 SERIES PRESSURE TRANSDUCERS

The iSeries is available in 1/32, 1/16, and 1/8 DIN programmable process controllers with serial and embedded Internet/Ethernet communications (Order EI Option CNI16D). The iSeries features programmable color displays, free software and ActiveX Controls, selectable full autotune PID control, and NEMA 4 (IP65) rated front bezel. Ordering Examples: DPiS8, strain/process (monitor only), 1/8 DIN; CNI8, strain/process controller with 2 control outputs. Visit us online for a complete selection.

