

OVER-THE-SIDE IMMERSION HEATERS

For Corrosive Solutions

PTHF Series
\$500
 Basic Unit

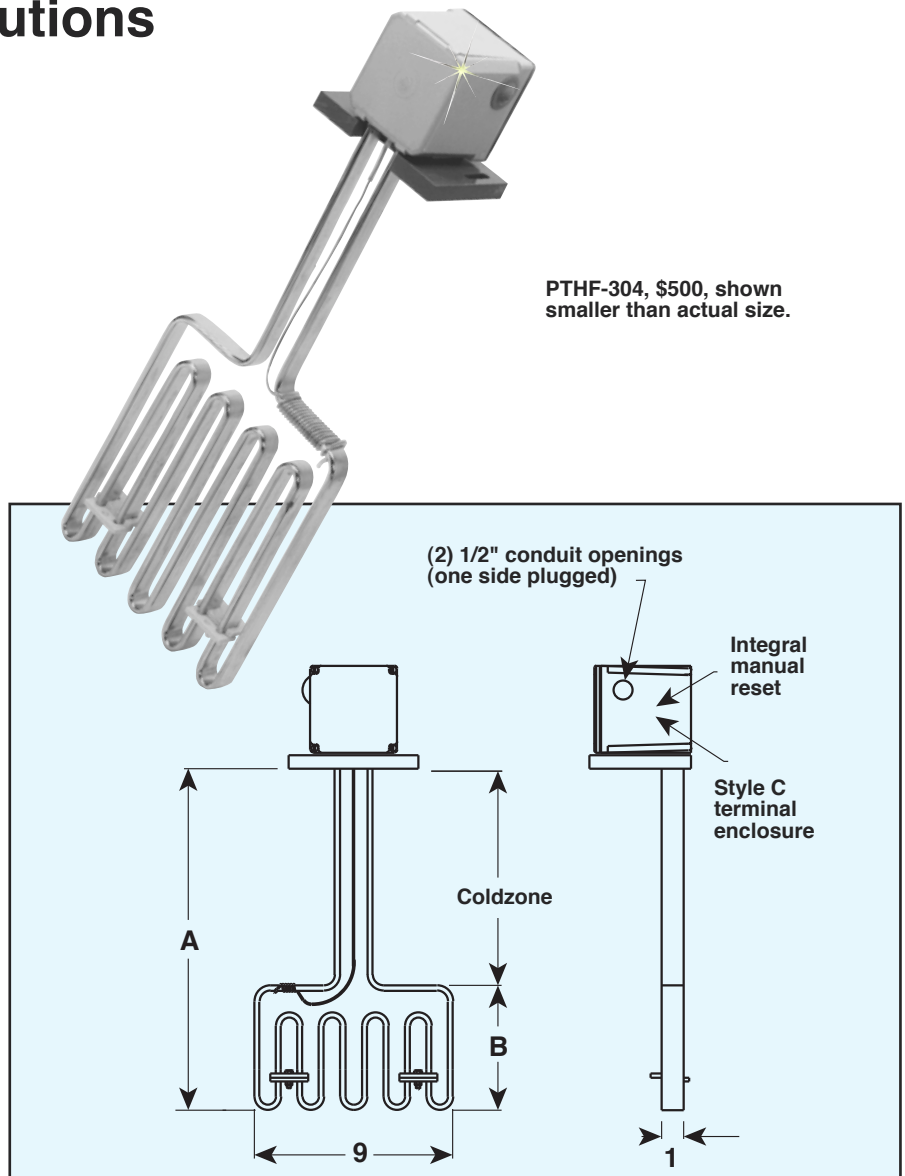


PTHF-304, \$500, shown smaller than actual size.

- ✓ Corrosion Resistant
- ✓ Solutions up to 100°C (212°F)
- ✓ Thin Blade Heating Element
- ✓ 3 Phase Design
- ✓ Overtemperature Protection

FEATURES

- **Thin Blade Heating Element**—304 Stainless Steel Electropolished surface.
- **3 phase, 20 W/in²**—provides long life service in many corrosive fluids.
- **Low Profile**—takes up less space in the tank.
- **Integral Over-Temperature Protection**—protects the heater against overheat conditions.
- **PVC Terminal Box and Mounting Plate**—protects wiring against corrosive fumes.
- **Lightweight**—easy to install.



MOST POPULAR MODELS HIGHLIGHTED!

To Order (Specify Model Number)							
kW	Volts	Phase	Dimensions-in.		Model No.	Price	Wt. lbs
			A	B			
3	240	3	16	7	PTHF-302	\$500	7
3	480	3	16	7	PTHF-304	500	7
4	240	3	18	9	PTHF-402	550	8
4	480	3	18	9	PTHF-404	550	8
6	240	3	22	13	PTHF-602	650	9
6	480	3	22	13	PTHF-604	650	9
8	240	3	27	18	PTHF-802	750	10
8	480	3	27	18	PTHF-804	750	10
10	240	3	31	22	PTHF-1002	825	11
10	480	3	31	22	PTHF-1004	825	11

Note: B dimension is the heated section.

Ordering Example: PTHF-604, 480V, 3 phase immersion heater, \$650.

HEAVY DUTY SOFT METAL HEATERS WITH CAST IRON SHEATH

CIT Series
Starts at
\$975

- 3 to 10 kW
- 240V, 1 Phase
- Used for Soft Metal Melting
- Rugged, Reliable
- Efficient Heat Transfer
- Three Configurations Available

APPLICATIONS

Used with metals such as solder, lead tin, stereotype metals, and babbitt (with 4% or less copper content) which can be melted for top working temperatures of 950°F or less. Not suitable for immersion heating of zinc or aluminum.*

FEATURES

Maximum heavy duty construction. 0.475" steel sheath tubular elements are cast into heavy iron bodies. Terminal connections are protected against rough handling and spillage by fully enclosed cast iron terminal box.

Large heat output with good heat transfer and high resistance to overheating.

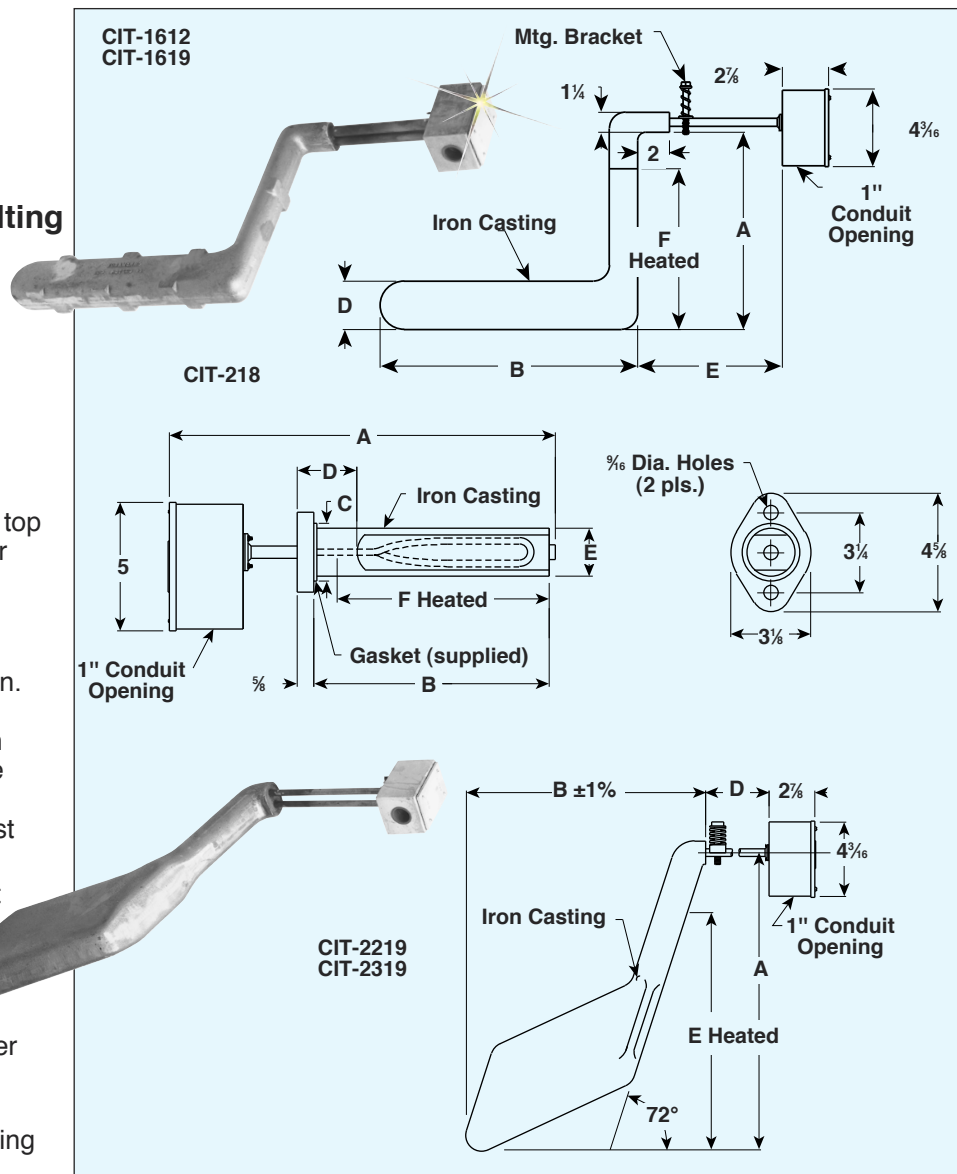
Easy to maintain. Simple to de-energize and remove for occasional pot cleaning or transfer to other melt pots.

Three configurations available including through-the-side mounting (CIT-218) and special stereotype metal melting design (CIT-2219 and CIT-2319).

Mounting flange and heater body are one casting in CIT-218 model. Cold ends of the element extend 2" beyond flange to terminal box.

Stereotype metal heaters CIT-2219 and CIT-2319 have combination of effective heating length, low watt density and shape which permits cold starts without damage to the heater. Also used with low-melt-point alloys.

* Clamped on OMEGALUX® strip or tubular heaters are used in these applications.



MOST POPULAR MODELS HIGHLIGHTED!

To Order (Specify Model Number)

kW	Volts	Fig.	Dimensions-in.							Displace-Anglement-In ³	Model No.	Price	Wt. lb
			A	B	C	D	E	F					
Over-the-Side Mounting													
5	240	A	12¼	16	2	3	9	10	—	135	CIT-1612	\$1450	40
5	240	A	19¼	16	2	3	6	17	—	180	CIT-1619	1550	55
Through-the-Side Mounting													
3	240	B	—	18	2¼	2¼	2	17½	—	57	CIT-218	\$975	22
Special Stereotype Design													
5	240	C	18½	12½	3	—	6½	14½	72°	—	CIT-2219	\$1500	51
10	240	C	19	15¼	3¼	—	9	15	72°	—	CIT-2319	2450	80

Ordering Example: CIT-1612, 5 kW, 240V heater with a 3" diameter, \$1450.



UNITED STATES

www.omega.com
1-800-TC-OMEGA
Stamford, CT.

CANADA

www.omega.ca
Laval(Quebec)
1-800-TC-OMEGA

GERMANY

www.omega.de
Deckenpfronn, Germany
0800-8266342

UNITED KINGDOM

www.omega.co.uk
Manchester, England
0800-488-488

FRANCE

www.omega.fr
Guyancourt, France
088-466-342

CZECH REPUBLIC

www.omegaeng.cz
Karviná, Czech Republic
596-311-899

BENELUX

www.omega.nl
Amstelveen, NL
0800-099-33-44



More than 100,000 Products Available!

• Temperature

Calibrators, Connectors, General Test and Measurement Instruments, Glass Bulb Thermometers, Handheld Instruments for Temperature Measurement, Ice Point References, Indicating Labels, Crayons, Cements and Lacquers, Infrared Temperature Measurement Instruments, Recorders Relative Humidity Measurement Instruments, RTD Probes, Elements and Assemblies, Temperature & Process Meters, Timers and Counters, Temperature and Process Controllers and Power Switching Devices, Thermistor Elements, Probes and Assemblies, Thermocouples Thermowells and Head and Well Assemblies, Transmitters, Wire

• Flow and Level

Air Velocity Indicators, Doppler Flowmeters, Level Measurement, Magnetic Flowmeters, Mass Flowmeters, Pitot Tubes, Pumps, Rotameters, Turbine and Paddle Wheel Flowmeters, Ultrasonic Flowmeters, Valves, Variable Area Flowmeters, Vortex Shedding Flowmeters

• pH and Conductivity

Conductivity Instrumentation, Dissolved Oxygen Instrumentation, Environmental Instrumentation, pH Electrodes and Instruments, Water and Soil Analysis Instrumentation

• Data Acquisition

Auto-Dialers and Alarm Monitoring Systems, Communication Products and Converters, Data Acquisition and Analysis Software, Data Loggers Plug-in Cards, Signal Conditioners, USB, RS232, RS485 and Parallel Port Data Acquisition Systems, Wireless Transmitters and Receivers

• Pressure, Strain and Force

Displacement Transducers, Dynamic Measurement Force Sensors, Instrumentation for Pressure and Strain Measurements, Load Cells, Pressure Gauges, Pressure Reference Section, Pressure Switches, Pressure Transducers, Proximity Transducers, Regulators, Strain Gages, Torque Transducers, Valves

• Heaters

Band Heaters, Cartridge Heaters, Circulation Heaters, Comfort Heaters, Controllers, Meters and Switching Devices, Flexible Heaters, General Test and Measurement Instruments, Heater Hook-up Wire, Heating Cable Systems, Immersion Heaters, Process Air and Duct, Heaters, Radiant Heaters, Strip Heaters, Tubular Heaters