

Six Channel Handheld Temperature Data Logger With Touch Screen



RDXL6SD



Optional

- ✓ Four Type J, K, T, E, R, S or N Thermocouple Inputs and Two 3-Wire Pt100 RTD Inputs (RTD Connectors are Included)
- ✓ Display and Log All 6 Channels Simultaneously or Individually
- ✓ Scheduled and Manual Logging Start/Stop
- ✓ 4 GB SD Card Stores Up to 1 Year of Data
- ✓ Display Maximum, Minimum, Average and Standard Deviation
- ✓ Display Temperature Difference Between Any 2 Channels
- ✓ Battery or Mains Powered (With Adaptor)
- ✓ Touch Screen with Backlight
- ✓ 2-Channel Temperature Chart
- ✓ Alarm Indication for Each Channel

The RDXL6SD is a six-channel touch screen data logger that accepts four thermocouple and two RTD inputs. Each channel has individually configurable HI/LO alarms. The intuitive touch screen interface allows each channel to be configured separately for input type, math, alarm and display options. All six channels can be displayed and logged simultaneously or individually. Data can be logged as fast as once a second and is stored on the included 4 GB SD card in Excel® compatible format.

Specifications

Inputs: 4x thermocouple inputs (any of the following types), for use with miniature thermocouple connectors, and 2 x 3-wire Pt100 inputs, for use with 3-pole stereo 3.5 mm (0.14") connectors (see below)



Four Type K Thermocouples included.

RDXL6SD shown smaller than actual size.

Input Temperature Range:

- Type J: -200 to 1200°C
- Type K: -200 to 1372°C
- Type T: -200 to 400°C
- Type R: 0 to 1768°C
- Type S: 0 to 1768°C
- Type N: 0 to 1300°C
- Type E: -200 to 1000°C
- RTD: -200 to 850°C

Temperature Accuracy:

- For Thermocouples: ±0.1% or 0.8°C
- For RTD: ±1.0% or 1.0°C

Temperature Resolution: 0.1° for temperatures below 1000°C or °F, 1° for temperatures above 1000°C or °F

Display: 72 mm (2.83") resistive touch TFT, 320 x 240 pixels, backlit

Configurable Parameters:

Temperature units, alarms, signal processing, date and time, data logging, power options, graph channels

Temperature Units: °F or °C

Alarm Configuration: 12 x alarms (2 per channel) with adjustable level, individually configurable as HI or LO

Signal Processing: Average, minimum, maximum, standard deviation, 2-channel temperature difference

Display Response Time: 1 second

Operating Temperature: 0 to 50°C (32 to 122°F)

Power Supply: Two "AA" batteries, 5 Vdc adaptor (included)

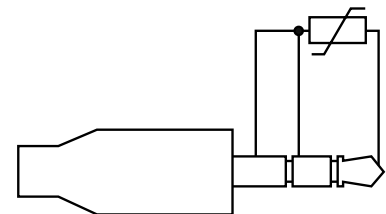
Current Draw: 250 mA while logging with full display brightness; 60 mA while logging in power saving mode

Weight: 180 g (6.3 oz) without batteries

Dimensions: 136 W x 71 H x 32 D mm (5.35 x 2.8 x 1.25")

Pt100 Connectors (RTD):

Use stereo (3-pole) 3.5 mm (0.14") connectors, wired as follows:



Data Logging Specifications

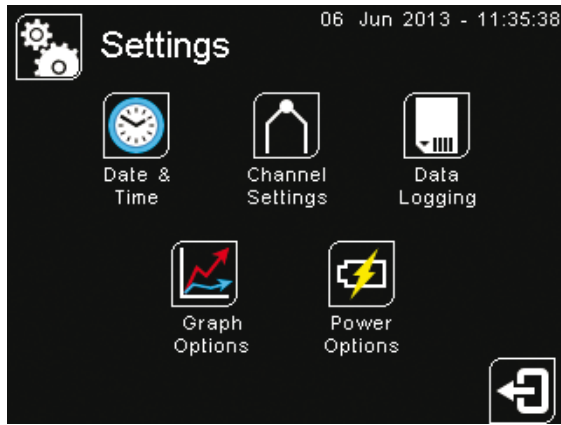
Data Logging Interval: 1 to 86,400 seconds (1 day)

Maximum SD Card Capacity: 4 GB SD Card (included)

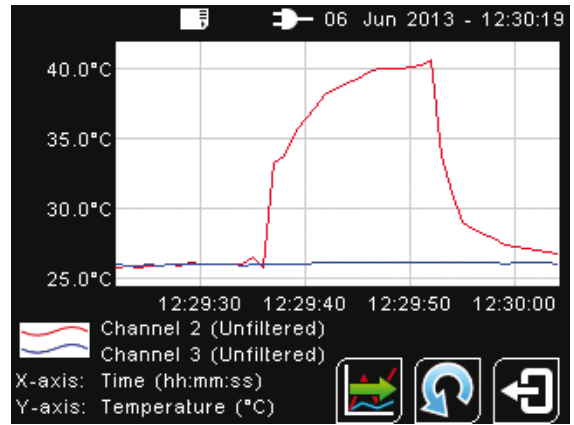
Variables Logged: Measured temperature, cold junction temperature, alarm events

File Format: .csv (can be imported to Excel)

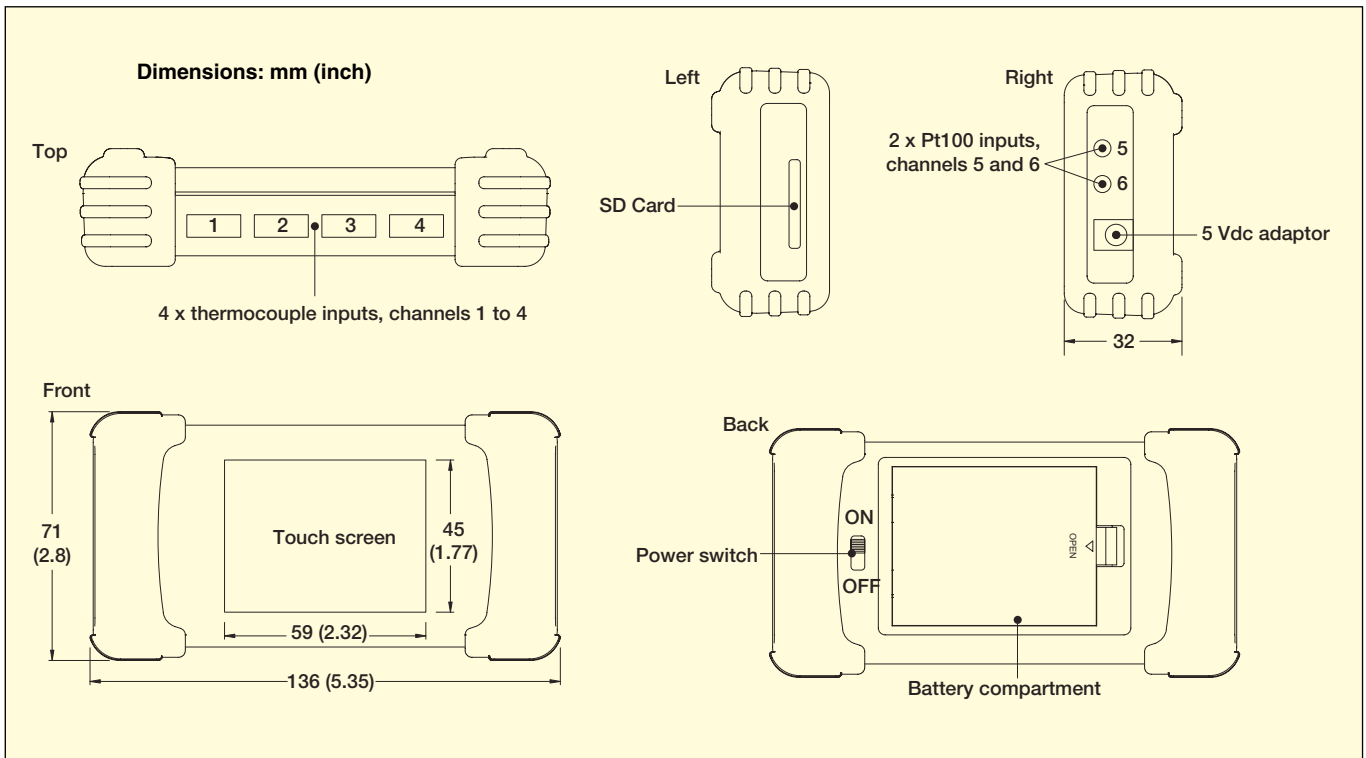
Configurable Parameters: Sample period, number of samples, scheduled start date and time



Intuitive Touch Screen Interface
Fully configurable, no additional hardware is required for configuration. Each channel is configurable separately for input type, maths, alarms and display options.



Temperature Graph
Two selectable channels are displayed. Scroll back in time to view chart history and data logging points.



To Order

Model No.	Description
RDXL6SD	6-channel handheld temperature data logger
RDXL6SD-CAL-3	6-channel handheld temperature data logger with NIST traceable calibration certificate with points

Accessories

Model No.	Description
RDXL6-VLMA	Spare 5 Vdc power adaptor
RDXL6SD-CONN	Spare RTD connector

Comes complete with operator's manual, 5 Vdc adaptor, two "AA" batteries, four beaded wire Type K thermocouples, two RTD connectors and 4 GB SD card.