

“SNAP-IN” FITTING FOR FLEXIBLE AND COPPER TUBING



OMEGA® CONNECTORS FOR USE IN...

- ✓ Food Service
- ✓ Research and Industrial Laboratories
- ✓ Fluid Applications
- ✓ Compressed Air
- ✓ Plastic and Copper Tubing Applications

OMEGA fittings and color coded caps are manufactured using food grade Acetal Copolymers and stainless steel—Our O-rings are produced from food grade Nitrile rubber. OMEGA fittings meet stringent ISO 9001 requirements and exceed all specifications implemented by the FDA, NSF and Water Quality Association. Together, and in combination with patented,

proprietary design, your customer's health and safety are never compromised.

Application Adaptability

Our fittings are modular in design, they can be coupled together to form new integral fittings, making any complex connection requirement fast and simple.

Easy, Quick Installation

Contrasting the time consuming procedure of sweating traditional copper connections, the installation of OMEGA fittings is a click and a snap. There is no need to drain systems, remake leaky solder joints, or adjust awkward compression fittings—an especially important feature when working in confined spaces. Typical installation times can be cut by as much as 40%.

Despite this drastic cut in installation time, tests show that OMEGA fittings have a substantial service life of 20 years, while withstanding temperatures and pressures well in excess of normal working situations.

WITH EVERY OMEGA FITTING, YOU CAN EXPECT —

- ✓ 100% Leakproof Installations, Every Time
- ✓ Efficient, Rapid Connections, Even in Tight Working Quarters
- ✓ Reductions in Maintenance Cost
- ✓ Suitable for Plastic and Copper Tubing Applications (For Stainless Steel Applications Consult Factory)
- ✓ Rapid Disconnect and Reusability

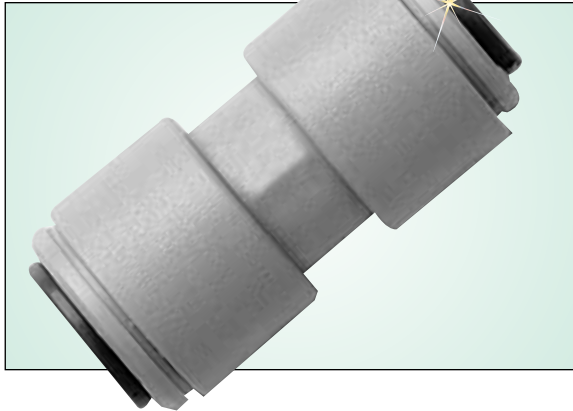


Fixed Elbow



Model No.	Tube OD (inch)	Thread NPTF
FT-480821-S	1/4	1/8
FT-480822-S	1/4	1/4
FT-480823-S	1/4	3/8
FT-481222-S	3/8	1/4

Reducing Union



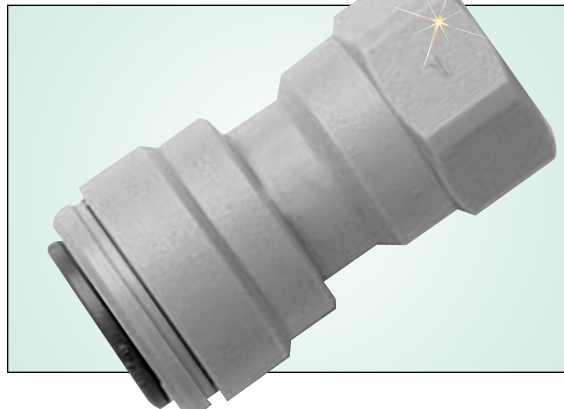
Model No.	Tube OD (inch)	
	OD 1	OD 2
FT-200806-S	1/4	3/16
FT-200804-S1	5/16	5/32
FT-201006-S	5/16	3/16
FT-201008-S	5/16	1/4
FT-201206-S	3/8	3/16
FT-201208-S	3/8	1/4
FT-201210-S	3/8	5/16
FT-201610-S	1/2	5/16
FT-201612-S	1/2	3/8

Union Connector



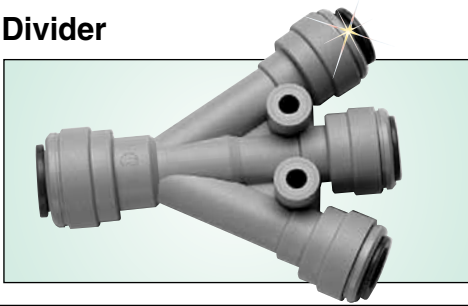
Model No.	Tube OD (inch)
FT-0404-S1	5/32
FT-0406-S	3/16
FT-0408-S	1/4
FT-0408-S1	5/16
FT-0412-S	3/8
FT-0416-S	1/2

Female Connector



Model No.	Tube OD (inch)	Thread NPTF
FT-450822-S	1/4	1/4
FT-451222-S	3/8	1/4

3-Way Divider



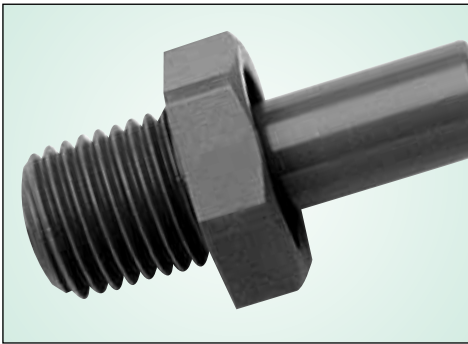
Model No.	Tube OD (inch)	
	Inlet OD	Outlet OD
FT-491612-S	1/2	3/8

Cross

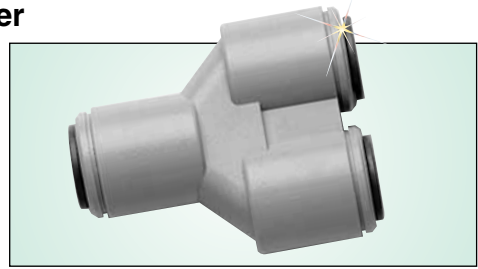


Model No.	Tube Od
FT-471200-S	3/8"

Stem Adaptor



2-Way Divider



Model No.	Tube OD (inch)
FT-230800-S1	5/16
FT-231200-S	3/8

Unequal 2-Way Divider

Model No.	Tube OD (inch)	
	Inlet OD	Outlet OD
FT-241210-S	3/8	5/16

Locking Clip

Model No.	Tube OD (inch)
FT-C1808-R	1/4
FT-C1812-R	3/8

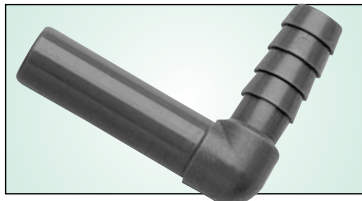


Model No.	Stem OD (inch)	Thread NPTF
FT-050421-S1	5/32	1/8
FT-050422-S1	5/32	1/4
FT-050621-S	3/16	1/8
FT-050821-S	1/4	1/8
FT-050821-S1	5/16	1/8
FT-050822-S	1/4	1/4
FT-050822-S1	5/16	1/4
FT-050823-S1	5/16	3/8
FT-051222-S	3/8	1/4
FT-051223-S	3/8	3/8
FT-051623-S	1/2	3/8
FT-051624-S	1/2	1/2



Check Valve

Model No.	Tube Od
FT-138120-S	3/8"



Tube to Hose Elbow

Model No.	Stem OD (inch)	Hose ID (inch)
FT-290808-S	1/4	1/4
FT-290808-S1	5/16	5/16
FT-290810-S	1/4	5/16
FT-291008-S	5/16	1/4
FT-291208-S	3/8	1/4
FT-291210-S	3/8	5/16

Tube to Hose Stem



Model No.	Stem OD (inch)	Hose ID (inch)
FT-250806-S	1/4	3/16
FT-250808-S	1/4	1/4
FT-250808-S1	5/16	5/16
FT-250810-S	1/4	5/16
FT-251006-S	5/16	3/16
FT-251008-S	5/16	1/4
FT-251012-S	5/16	3/8
FT-251208-S	3/8	1/4
FT-251210-S	3/8	5/16
FT-251212-S	3/8	3/8
FT-251216-S	3/8	1/2
FT-251612-S	1/2	3/8
FT-251616-S	1/2	1/2

Ordering Example: FT-250806-S, 3/16" tube ID to 1/4" stem OD.