

**QUICK START GUIDE**

# OM-90 Series

## Portable Temperature and Humidity Data Loggers



---

[dwyeromega.com](http://dwyeromega.com) | [info@dwyeromega.com](mailto:info@dwyeromega.com)

For latest product manuals:  
[dwyeromega.com/en-us/pdf-manuals](http://dwyeromega.com/en-us/pdf-manuals)

**1 YEAR**  
WARRANTY

Table of Contents

1. Description..... 3

2. Battery Installation..... 3

3. Connecting to a Data Logger ..... 4

4. Configuring a Data Logger..... 5

5. Retrieving Data..... 7

6. More Advanced Topics..... 7

## 1. Description

The OM-90 Series are portable, battery operated, temperature and humidity data loggers able to store 65,520 samples of both temperature and humidity along with a time stamp. The data logger runs off of a CR2032 coin cell battery that provides a 2-year battery life while logging.

This Quick Reference Guide gets you started with the logger with the most basic functions to have you up and running with your logger in a matter of minutes.



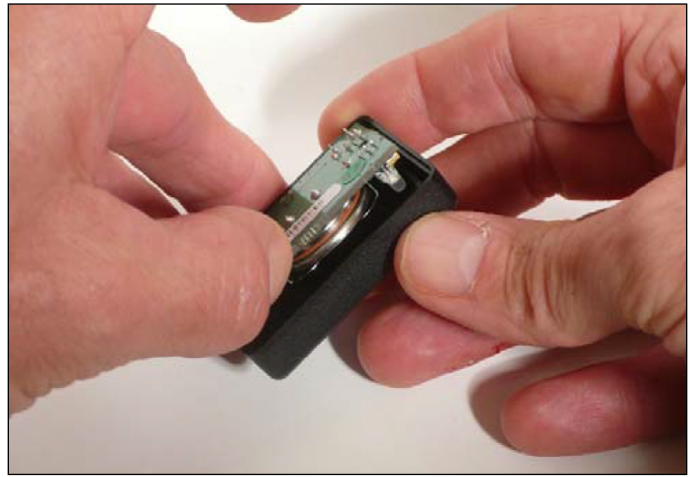
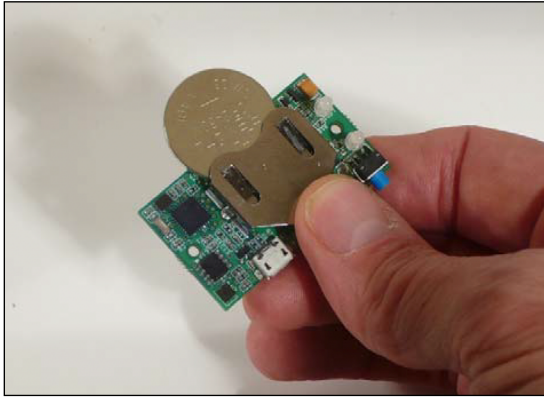
## 2. Battery Installation

The data logger runs from a standard CR2032 battery. There are different manufacturers. You can find it easily on the web. The key thing is to choose a CR2032 battery with high capacity since this will translate into a longer logger battery life.

First remove the data logger cover by unscrewing the two fastener screws (#1 Philips) at the rear of the logger.



Then remove the circuit board from the box (use soft tool or fingernail to remove)



Insert a new battery as shown being careful not to touch and exposed electronics in the process.

Finally re-attach the cover and tighten the fastener screws again (be careful not to over tighten).

### 3. Connecting to a Data Logger

To configure or retrieve data from a logger you will need a Windows PC running Windows XP, Windows Vista, Windows 7 or Windows 8. Connect the data logger to your PC using a USB-C cable. Any USB port on the PC can be used.

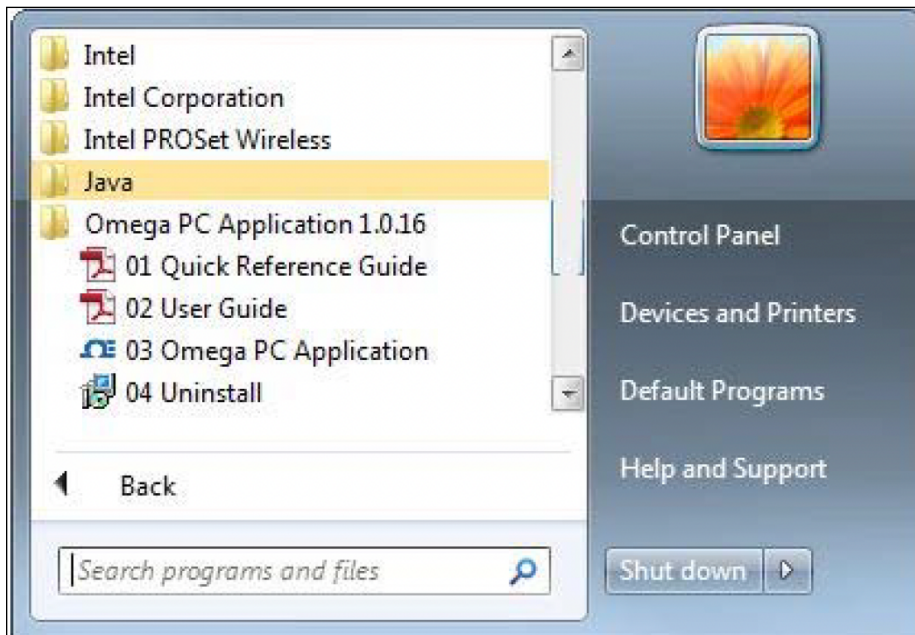




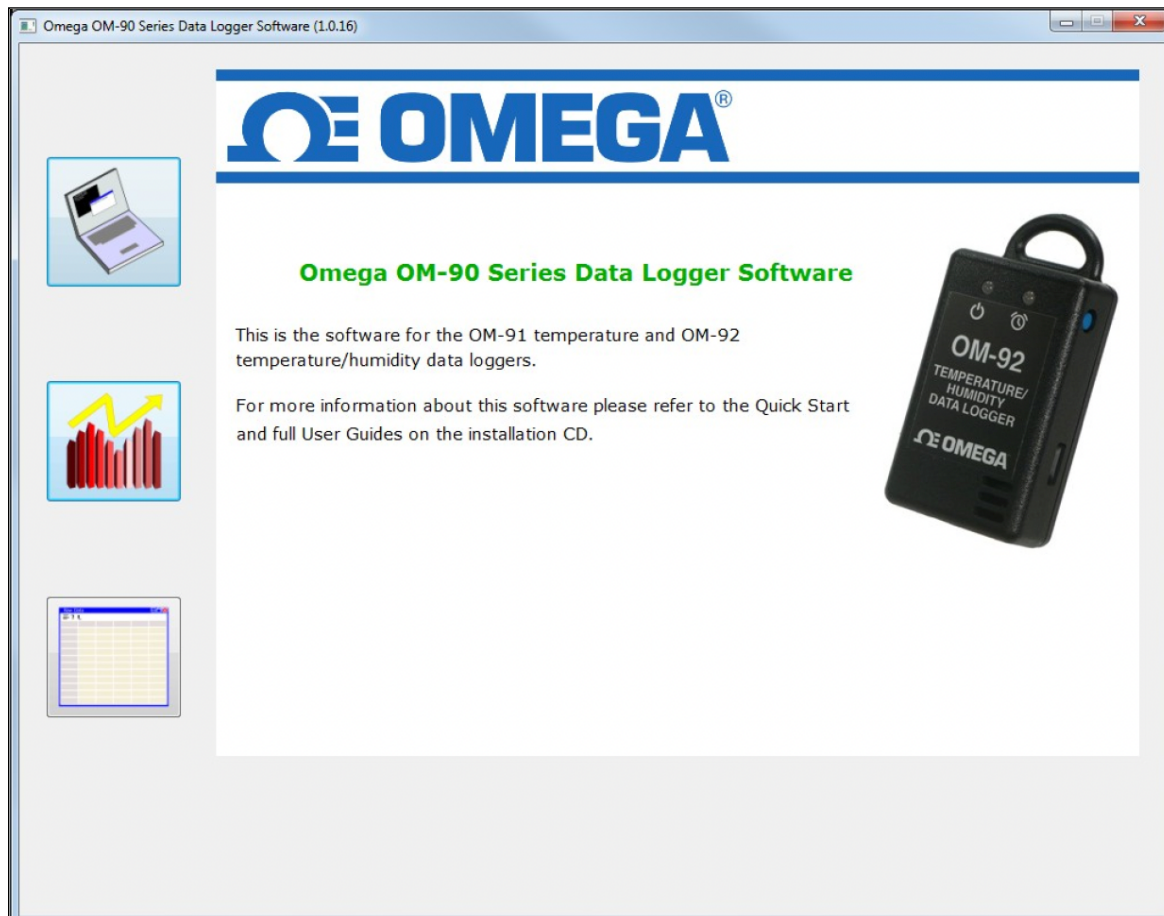
#### 4. Configuring a Data Logger

Installation of the Omega OM-90 Series Data Logger Software is very simple. The data logger needs no special drivers since it is a USB HID device and such devices can make use of the standard drivers that come with Windows.

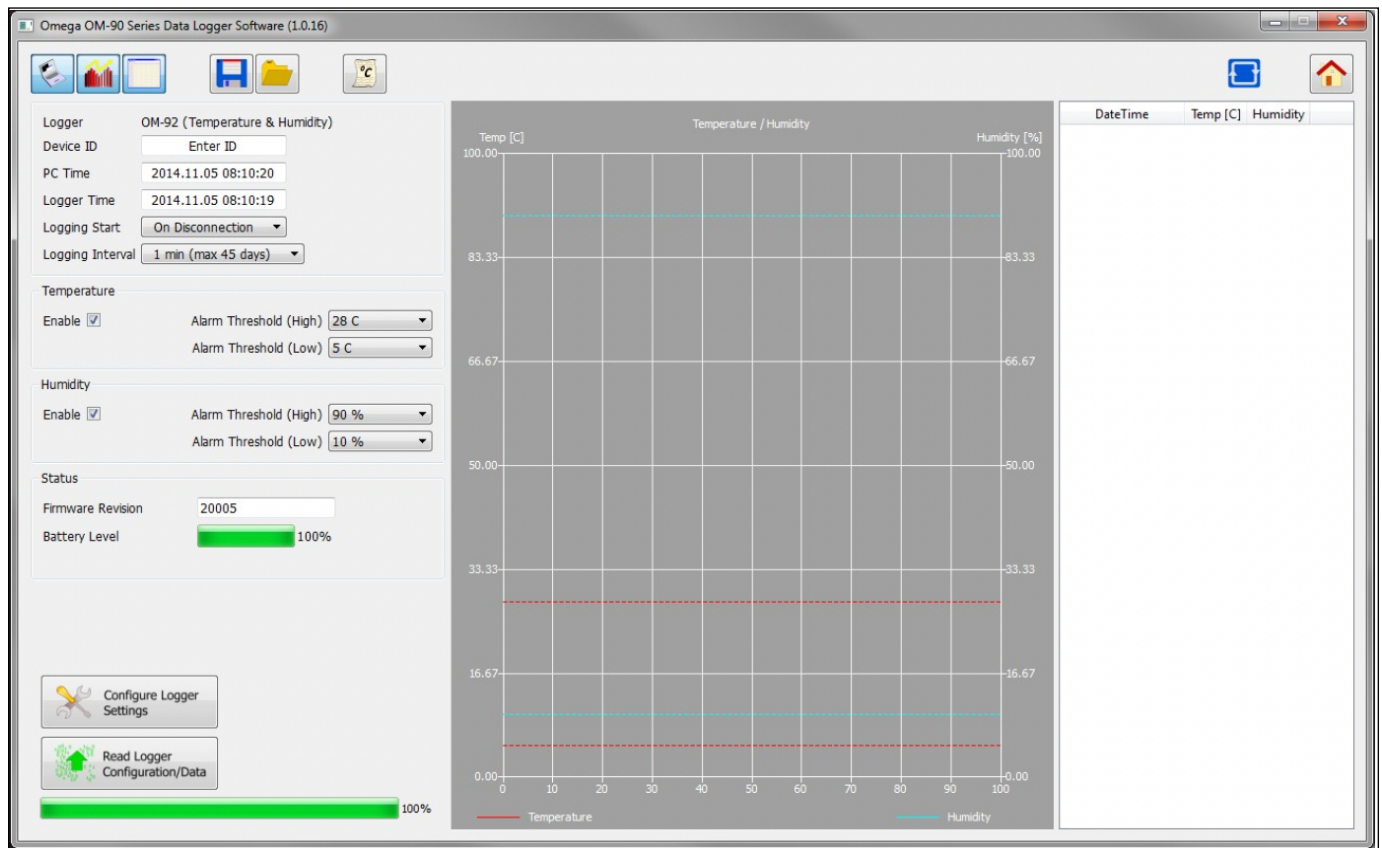
In the Windows Start Menu launch the Omega PC Application.



The front page of the GUI is an overview of the logger. Press the Configuration button to get to the next page.



Connect the logger and you will see the connected indication changes to blue.



Next fill out the configuration settings. For example:

- °C or °F
- logging start to "On Disconnection"
- logging interval to say 10 seconds
- temperature alarm enabled and thresholds set
- humidity alarms enabled and thresholds set

Press the "Configure Button" so that the settings are updated in your logger. Please wait until the software has finished updating the logger.

Disconnect the logger. You should see that logging will start automatically indicated by a 1 second green light. The green light will then flash every 6 seconds to indicate that the unit is logging. The red light will flash also in the case that the temperature or humidity goes outside of the allowed limits and triggers the alarms.

If the logger becomes full then all lights will stop flashing.

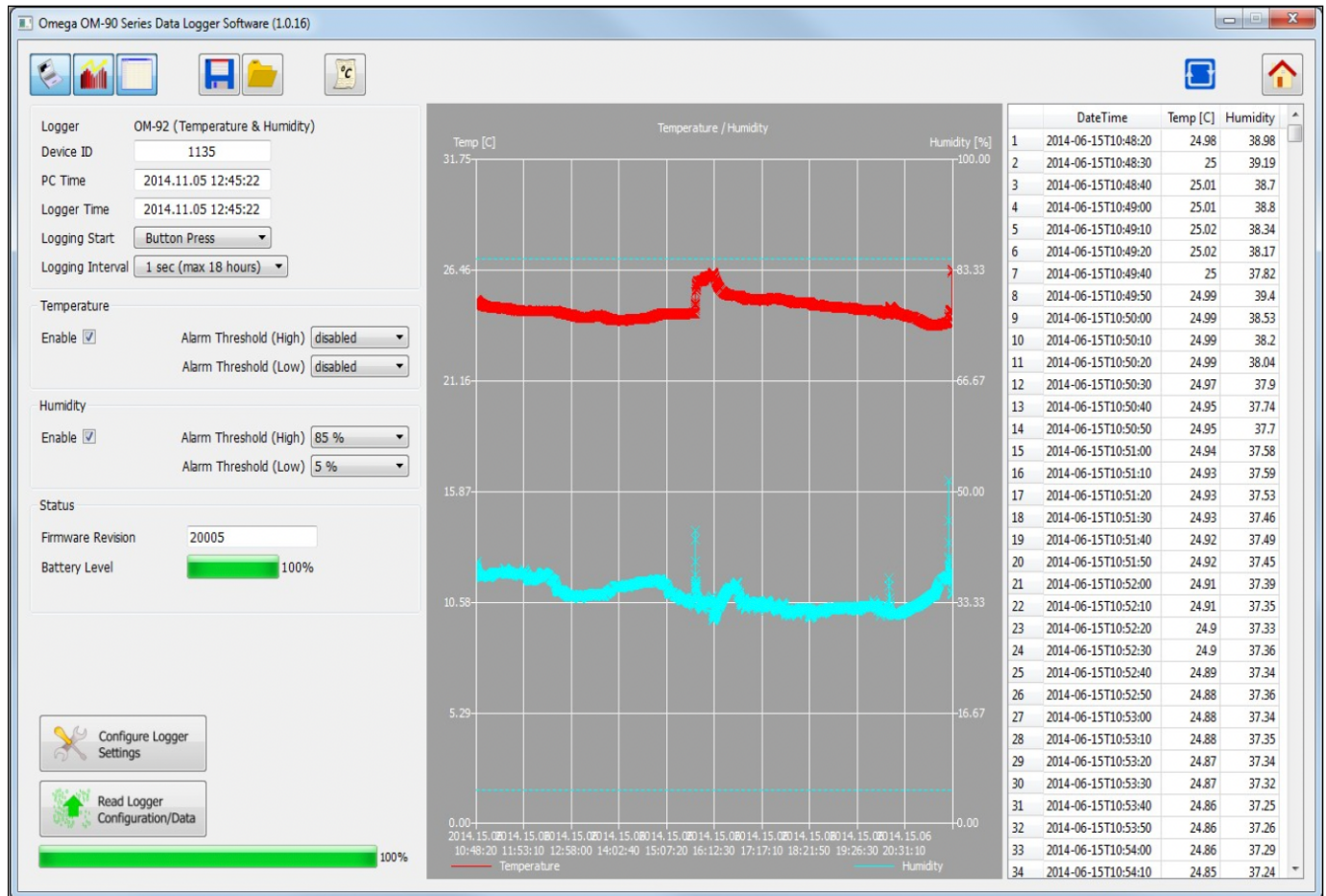
## 5. Retrieving Data

Connect your data logger. The logger red light will illuminate for 1 second indicating logging is stopping.

Start the OM-90 Series Data Logger Software and navigate to the Configuration page.

Press "Read Logger Configuration/Data" to retrieve the configuration and data from the connected logger.

Wait until all information is retrieved from the logger.



The graph and spread sheet will be filled with the logged data.

Zooming in and out of the graphs can be achieved by the following controls:

- to Zoom In - drag the left mouse button
- to Zoom Out - click the right mouse button
- when zoomed in you can move around using the keyboard arrows or the mouse scroll wheel

To write data and configuration to file, press the save icon.

## 6. More Advanced Topics

This document has shown the most basic way to configure the data logger in order for you to get started very quickly.

There are for example other logger start modes such as button press, start at a defined time and real time logging. For a more exhaustive description of all features of the logger then please consult the full OM-90 Series User Guide. The software is available on the OM-90 web page for download.

## WARRANTY/DISCLAIMER

OMEGA ENGINEERING, INC. warrants this unit to be free of defects in materials and workmanship for a period of **13 months** from date of purchase. OMEGA's WARRANTY adds an additional one (1) month grace period to the normal **one (1) year product warranty** to cover handling and shipping time. This ensures that OMEGA's customers receive maximum coverage on each product.

If the unit malfunctions, it must be returned to the factory for evaluation. OMEGA's Customer Service Department will issue an Authorized Return (AR) number immediately upon phone or written request. Upon examination by OMEGA, if the unit is found to be defective, it will be repaired or replaced at no charge. OMEGA's WARRANTY does not apply to defects resulting from any action of the purchaser, including but not limited to mishandling, improper interfacing, operation outside of design limits, improper repair, or unauthorized modification. This WARRANTY is VOID if the unit shows evidence of having been tampered with or shows evidence of having been damaged as a result of excessive corrosion; or current, heat, moisture or vibration; improper specification; misapplication; misuse or other operating conditions outside of OMEGA's control. Components in which wear is not warranted, include but are not limited to contact points, fuses, and triacs.

**OMEGA is pleased to offer suggestions on the use of its various products. However, OMEGA neither assumes responsibility for any omissions or errors nor assumes liability for any damages that result from the use of its products in accordance with information provided by OMEGA, either verbal or written. OMEGA warrants only that the parts manufactured by the company will be as specified and free of defects. OMEGA MAKES NO OTHER WARRANTIES OR REPRESENTATIONS OF ANY KIND WHATSOEVER, EXPRESSED OR IMPLIED, EXCEPT THAT OF TITLE, AND ALL IMPLIED WARRANTIES INCLUDING ANY WARRANTY OF MERCHANTABILITY AND FITNESS FOR A PARTICULAR PURPOSE ARE HEREBY DISCLAIMED. LIMITATION OF LIABILITY:** The remedies of purchaser set forth herein are exclusive, and the total liability of OMEGA with respect to this order, whether based on contract, warranty, negligence, indemnification, strict liability or otherwise, shall not exceed the purchase price of the component upon which liability is based. In no event shall OMEGA be liable for consequential, incidental or special damages.

CONDITIONS: Equipment sold by OMEGA is not intended to be used, nor shall it be used: (1) as a "Basic Component" under 10 CFR 21 (NRC), used in or with any nuclear installation or activity; or (2) in medical applications or used on humans. Should any Product(s) be used in or with any nuclear installation or activity, medical application, used on humans, or misused in any way, OMEGA assumes no responsibility as set forth in our basic WARRANTY/DISCLAIMER language, and, additionally, purchaser will indemnify OMEGA and hold OMEGA harmless from any liability or damage whatsoever arising out of the use of the Product(s) in such a manner.

## RETURN REQUESTS/INQUIRIES

Direct all warranty and repair requests/inquiries to the OMEGA Customer Service Department. BEFORE RETURNING ANY PRODUCT(S) TO OMEGA, PURCHASER MUST OBTAIN AN AUTHORIZED RETURN (AR) NUMBER FROM OMEGA'S CUSTOMER SERVICE DEPARTMENT (IN ORDER TO AVOID PROCESSING DELAYS). The assigned AR number should then be marked on the outside of the return package and on any correspondence.

The purchaser is responsible for shipping charges, freight, insurance and proper packaging to prevent breakage in transit.

FOR **WARRANTY** RETURNS, please have the following information available BEFORE contacting OMEGA:

1. Purchase Order number under which the product was PURCHASED,
2. Model and serial number of the product under warranty, and
3. Repair instructions and/or specific problems relative to the product.

FOR **NON-WARRANTY** REPAIRS, consult OMEGA for current repair charges. Have the following information available BEFORE contacting OMEGA:

1. Purchase Order number to cover the COST of the repair,
2. Model and serial number of the product, and
3. Repair instructions and/or specific problems relative to the product.

OMEGA's policy is to make running changes, not model changes, whenever an improvement is possible. This affords our customers the latest in technology and engineering.

OMEGA is a trademark of OMEGA ENGINEERING, INC. © Copyright OMEGA ENGINEERING, INC. All rights reserved. This document may not be copied, photocopied, reproduced, translated, or reduced to any electronic medium or machine-readable form, in whole or in part, without the prior written consent of OMEGA ENGINEERING, INC.





a DwyerOmega brand

**dwyeromega.com**

MQS5440/0425

