

Shop online at omega.comSM

- ☑ Thermocouple, RTD & Thermistor Probes, Connectors, Panels & Assemblies
- ☑ Wire: Thermocouple, RTD & Thermistor
- ☑ Calibrators & Ice Point References
- ☑ Recorders, Controllers & Process Monitors
- ☑ Infrared Pyrometers

- ☒ Transducers & Strain Gages
- ☒ Load Cells & Pressure Gages
- ☒ Displacement Transducers
- ☒ Instrumentation & Accessories

- ☒ Rotameters, Gas Mass Flowmeters & Flow Computers
- ☒ Air Velocity Indicators
- ☒ Turbine/Paddlewheel Systems
- ☒ Totalizers & Batch Controllers

- ☑ pH Electrodes, Testers & Accessories
- ☑ Benchtop/Laboratory Meters
- ☑ Controllers, Calibrators, Simulators & Pumps
- ☑ Industrial pH & Conductivity Equipment

- ✓ Data Acquisition & Engineering Software
- ✓ Communications-Based Acquisition Systems
- ✓ Plug-in Cards for Apple, IBM & Compatibles
- ✓ Data Logging Systems
- ✓ Recorders, Printers & Plotters

- ☒ Heating Cable
- ☒ Cartridge & Strip Heaters
- ☒ Immersion & Band Heaters
- ☒ Flexible Heaters
- ☒ Laboratory Heaters

- ☒ Metering & Control Instrumentation
- ☒ Refractometers
- ☒ Pumps & Tubing
- ☒ Air, Soil & Water Monitors
- ☒ Industrial Water & Wastewater Treatment
- ☒ pH, Conductivity & Dissolved Oxygen Instruments



Wireless Data Loggers

MQS5064/0213

omega.com®
Ω OMEGA®

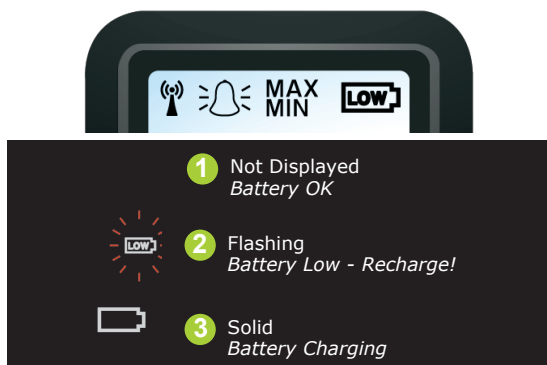
e-mail: info@omega.com
For latest product manuals:
omegamanual.info



Getting Started

The sensor will arrive partly charged but ideally you should charge it for 24 hours before use for optimum performance. The sensor will automatically start recharging while connected to a PC or USB charger using the USB cable provided.

The battery icon has three states:



Installing Software

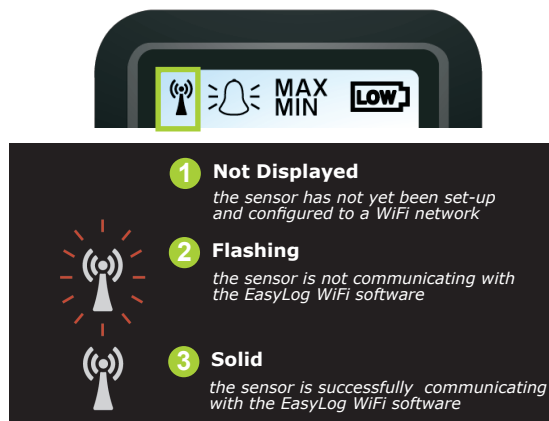
The sensor may already be displaying a reading but it will not be configured or connected to your WiFi network until you complete the product set-up.

To set up the unit use our free EasyLog WiFi PC software available to download from the 'Software' section at www.omega.com.


Sensor Placement

When placing the sensor consider local heat sources and radio obstructions. Any physical obstructions between router and sensor will affect the signal range. WiFi extenders can also be used to increase range.

The Signal icon has three states:



Hints and Tips

Use the  button on the home screen to get more help on setting up your sensors.

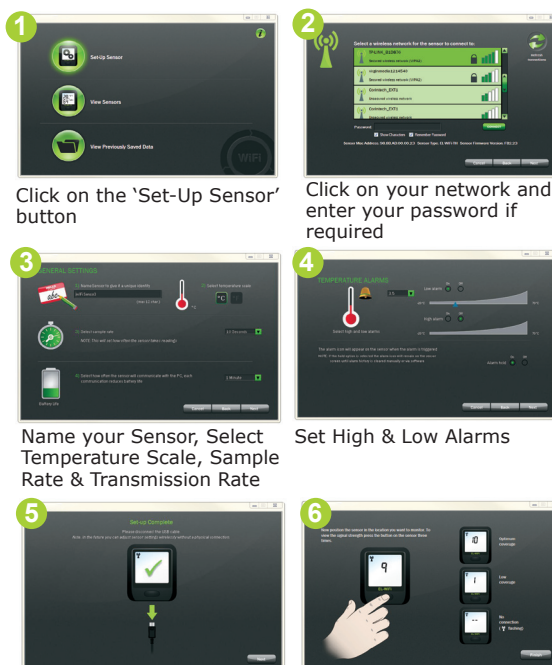
Changing Sensor Settings over Air

Sensors can be configured over the air without reconnecting the USB cable.

Sensor Settings

Connect the OM-EL-WiFi Sensor to the PC's USB port with the USB cable provided.

Double click on the EasyLog WiFi icon on your Windows™ desktop. This will load the wizard configuration software. Follow the on-screen instructions to set up your sensor.



Note: These screens will vary depending on which sensor model purchased.

Important Safety Instructions

WARNING: Failure to follow these safety instructions could result in fire, electrical shock, other injury or damage.

Battery Replacement

The rechargeable battery in the EasyLog product should only be replaced by Omega Engineering.

Repairing or Modifying

Never attempt to repair or modify EasyLog products. Dismantling EasyLog products, including the removal of external screws, may cause damage that is not covered under the warranty. Servicing should only be provided by Omega Engineering. If the EasyLog product has been submerged in water, punctured, or seriously damaged do not use it before returning it to Omega Engineering.

Charging

Only use a USB Power Adaptor or a USB port on another device to charge EasyLog products. Read all safety instructions for any third party products and accessories before use with this product. Omega Engineering is not responsible for the operation of any third party accessories or their compliance with safety and regulatory standards. We do not recommend charging the battery when the unit is at 40°C (104°F) or above. Some of our products employ safety features to prevent this.

Using Connectors and Ports

Never force a connector into a port; check for obstruction in the port, make sure that the connector matches the port and that you have positioned the connector correctly in relation to the port. If the connector and port do not join with reasonable ease they probably do not match and should not be used.

Disposal and Recycling Information

You must dispose of EasyLog products according to relevant laws and regulations. EasyLog products contain electronic components and Li-Po batteries and therefore they must be disposed of separately from household waste.

 **OMEGA®**
omega.com®