

1 YEAR
WARRANTY

QUICK START

OMEGA® User's Guide



OME-WISE-7115

*Shop online at
omega.com®*

*e-mail: info@omega.com
For latest product manuals:
omegamanual.info*



OME-WISE-7000 SERIES Web-Based Intelligent PAC Controllers



OMEGAnet® On-Line Service
omega.com

Internet e-mail
info@omega.com

Servicing North America:

U.S.A.: ISO 9001 Certified

OMEGA Engineering, Inc., One Omega Drive
P.O. Box 4047, Stamford, CT 06907-0047 USA
Toll-Free: 1-800-826-6342
TEL: (203) 359-1660 FAX: (203) 359-7700
e-mail: info@omega.com

Canada:

976 Bergar, Laval (Quebec)
H7L 5A1, Canada
Toll-Free: 1-800-826-6342
TEL: (514) 856-6928 FAX: (514) 856-6886
e-mail: info@omega.ca

For immediate technical or application assistance:

U.S.A. and Canada:

Sales Service: 1-800-826-6342 / 1-800-TC-OMEGA®
Customer Service: 1-800-622-2378 / 1-800-622-BEST®
Engineering Service: 1-800-872-9436 / 1-800-USA-WHEN®

Mexico/ Latin America:

TEL: 001 (203) 359-1660
FAX: 001 (203) 359-7700
e-mail: espanol@omega.com

Servicing Asia

China: 1698 Yishan Road, Unit 102, Minhang District
Shanghai, China 201103
Hotline: 800 819 0559 / 400 619 0559
e-mail: info@cn.omega.com

Servicing Europe:

Benelux:

Toll-Free: 0800 099 3344
TEL: +31 20 347 21 21
FAX: +31 20 643 46 43
e-mail: sales@omega.nl

Czech Republic:

Frystatska 184
733 01 Karviná, Czech Republic
Toll-Free: 0800-1-66342
TEL: +420-59-6311899
FAX: +420-59-6311114
e-mail: info@omegashop.cz

France:

Toll-Free: 0850 541038
TEL: 01 57 32 48 17
FAX: 01 57 32 48 18
e-mail: esales@omega.fr

Germany/ Austria:

Daimlerstrasse 26
D-75392 Deckenpfronn, Germany
Toll-Free: 0800 8266342
TEL: +49 (0) 7056 9398-0
FAX: +49 (0) 7056 9398-29
e-mail: info@omega.de

United Kingdom:

ISO 9001 Certified

OMEGA Engineering Ltd.
One Omega Drive
River Bend Technology Centre, Northbank
Irlam, Manchester M44 5BD England
Toll-Free: 0800-488-488
TEL: +44 (0) 161 777-6611
FAX: +44 (0) 161 777-6622
e-mail: sales@omega.co.uk

It is the policy of OMEGA Engineering, Inc. to comply with all worldwide safety and EMC/EMI regulations that apply. OMEGA is constantly pursuing certification of its products to the European New Approach Directives. OMEGA will add the CE mark to every appropriate device upon certification.

The information contained in this document is believed to be correct, but OMEGA accepts no liability for any errors it contains, and reserves the right to alter specifications without notice.

WARNING: These products are not designed for use in, and should not be used for, human applications.



Quick Start Guide for OME-WISE-7000 Series Web-Based Intelligent PAC Controllers

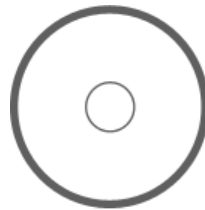
Thank you for purchasing an OME-WISE-7000 Series module – one of the most cost-effective automation solutions for remote monitoring and control applications. This Quick Start Guide will provide you with minimum information to get started with the OME-WISE-7000 Series. It is intended for use only as a quick reference. For more detailed information and procedures, please refer to the full user manual on the CD included in this package.

What's In the Box?

In addition to this guide, the package includes the following items:



OME-WISE-7000 Series Module



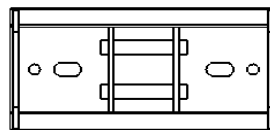
Software Utility CD



Screw Driver



A4 Sheet (Quick Start)



Plastic DIN-Rail Mounting Kit

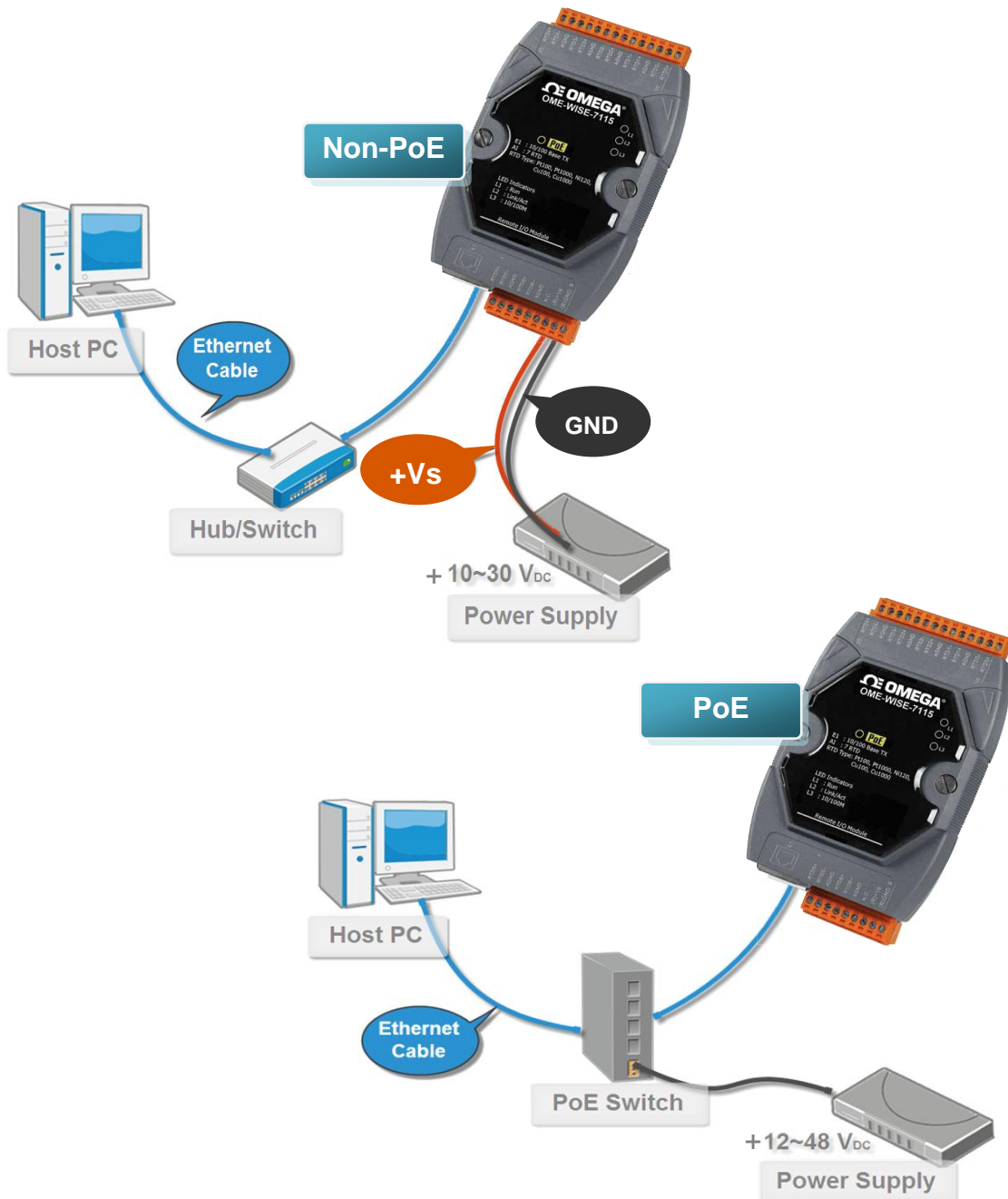


1 Configure Boot Mode

Make sure the switch is in the “Normal” position.

2 Connect to Network, PC and Power

Connect to Ethernet hub/switch and PC via the RJ-45 Ethernet port.



3 Install MiniOS7 Utility

Step 1: Get the MiniOS7 Utility tool

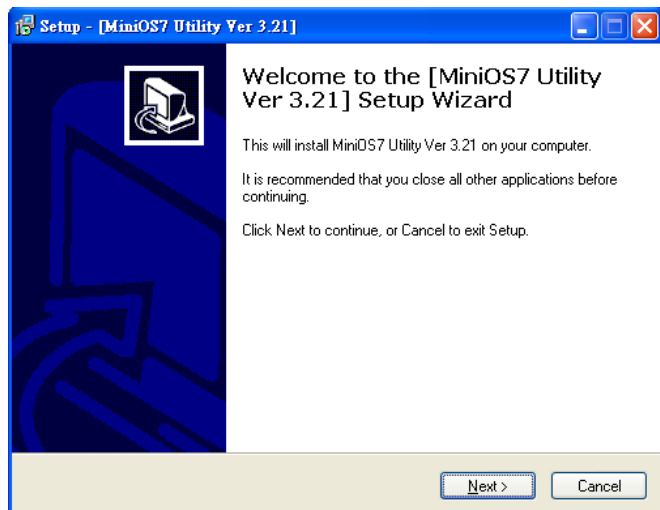


The MiniSO7 Utility can be obtained from companion CD.

Step 2: Follow the prompts to complete the installation



After the installation has been completed, a new short-cut for MiniOS7 Utility will appear on the desktop.



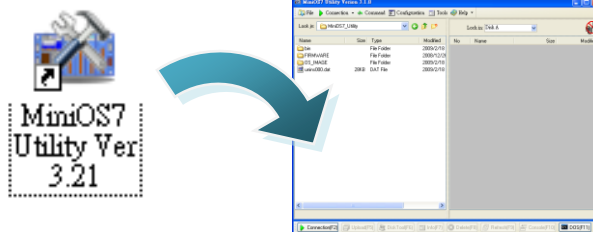
4 Assign a New IP by MiniOS7 Utility

Each module comes with a default IP address; please assign a new IP address to the module. The factory default IP settings are as follows:

Item	Default
IP Address	192.168.255.1
Subnet Mask	255.255.0.0
Gateway	192.168.0.1

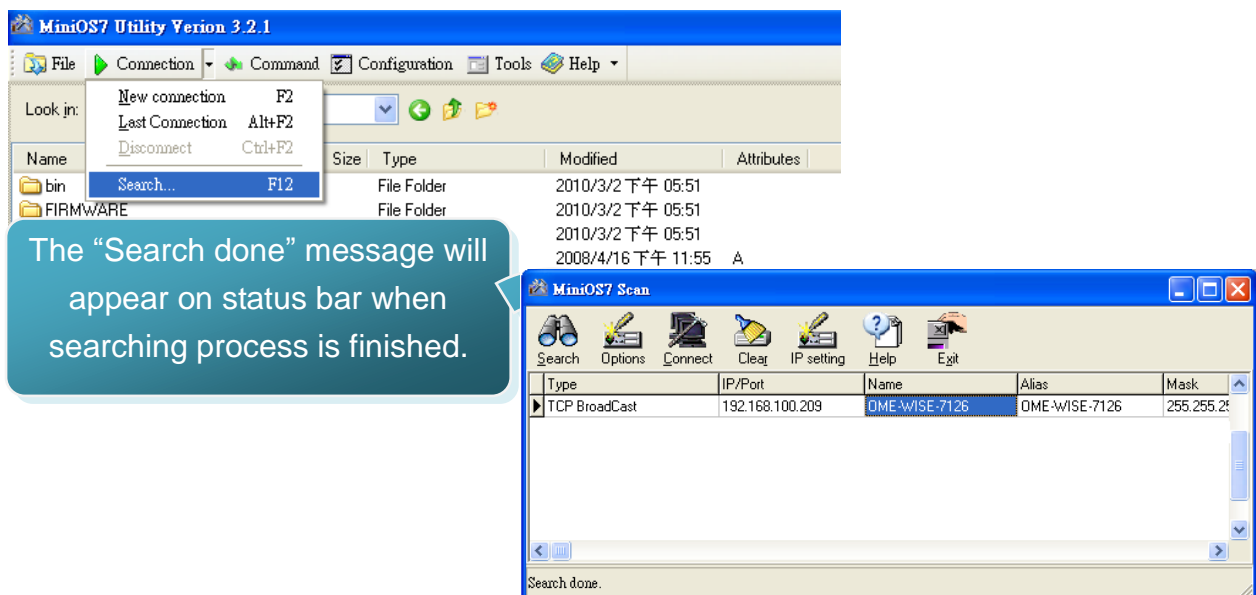
Step 1: Run MiniOS7 Utility

Double-click the MiniOS7 Utility shortcut on your desktop.



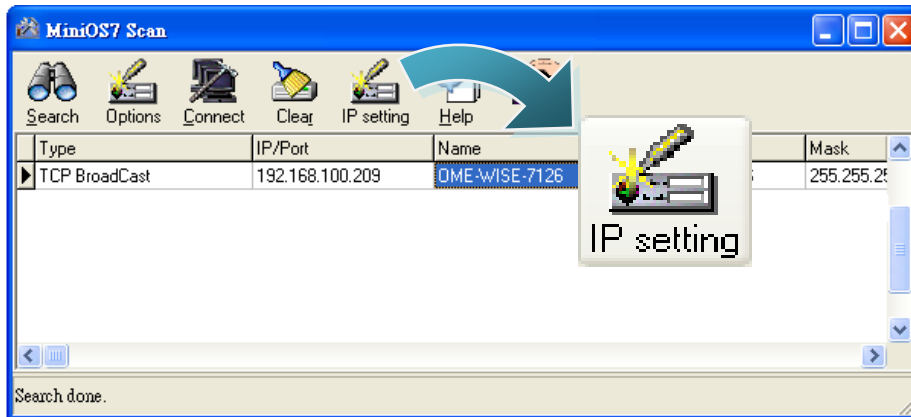
Step 2: Press “F12” or click “Search” from the “Connection” menu

Press “F12” or click “Search” from the Connection menu, a MiniOS7 Scan dialog will appear and will display all the MiniOS7 modules that are currently connected to your network.

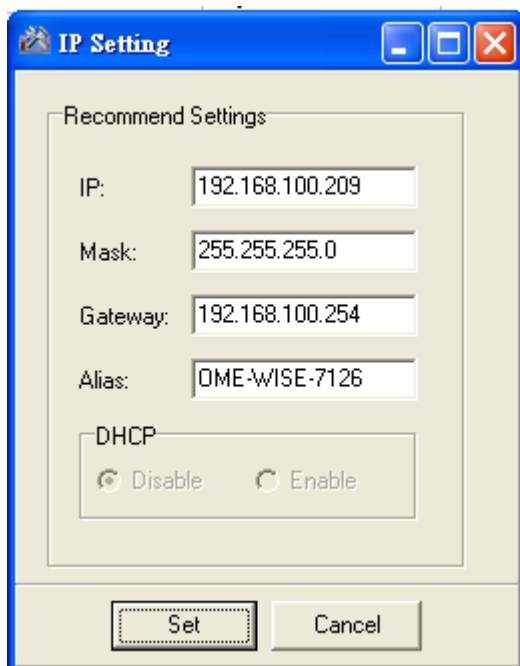


Step 3: Select the module name and then click “IP setting” from the toolbar

Select the module name from the list of the fields, and then click “IP setting” from the toolbar.

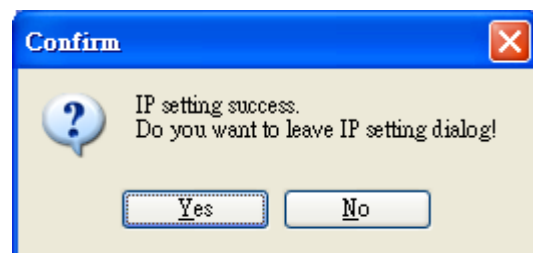


Step 4: Assign a new IP address and then click “Set” button



Step 5: Click “Yes” button

After completing the settings, click the “Yes” button to save and exit the procedure.



5 Go to OME-WISE-7000 Web Site to edit control logic.

Please follow the steps below to implement IF-THEN-ELSE control logic on controllers:

Step 1: Open a browser

Open a browser (recommended internet browsers: Mozilla Firefox or Internet Explorer).

Step 2: Type in the URL address of the OME-WISE-7000 Series

Make sure the IP address assigned is accurate (please refer to section 4: “Assign a New IP by MiniOS7 Utility). Type in the URL address of the OME-WISE-7000 Series module in the address bar.

Step 3: Get on the OME-WISE-7000 Series web site

Get on the OME-WISE-7000 Series web site. Implement the control logic configuration in the order as indicated in the diagram.



Step 4: Edit Basic Settings

Modify the Alias of the OME-WISE-7000 Series module, Ethernet setting of the OME-WISE-7000 Series module, the analog input/output range, or the downloading password in the Basic Setting page as needed.

1. Basic Setting

- Name Setting
- Module Setting
- Ethernet Setting
- Password Setting

Module Setting Page

Module: OME-WISE-7117

AI Voltage & Current Input

AI0	AI1	AI2	AI3
-150 mV ~ 150 mV	-150 mV ~ 150 mV	-150 mV ~ 150 mV	-150 mV ~ 150 mV
AI4	AI5	AI6	AI7
-150 mV ~ 150 mV	-150 mV ~ 150 mV	-150 mV ~ 150 mV	-150 mV ~ 150 mV

Ethernet Setting Page

IP	192	168	100	249
Mask	255	255	255	0
Gateway	192	168	100	254

Save

Step 5: Edit Advanced Settings

Edit channel attribute, internal register, Timer, Email, CGI commands, Recipe, and P2P configuration settings in the Advanced Setting page as needed.

2. Advanced Setting

- DI Attribute Setting
- DO Attribute Setting
- AI Attribute Setting
- AO Attribute Setting
- Internal Register Setting
- Timer Setting
- Schedule Setting
- Email Setting
- CGI Command Setting
- Recipe Setting
- P2P Setting

DO Attribute Setting Page

Module & Channel: OME-WISE-7117 Channel: 0

Nickname: []

Power On Value: OFF

Counter

Condition: Disable

Initial Value: 0 (Range: 0 ~ 65535)

Enable Pulse Output

Pulse High: 0 x 10ms (Range: 1 ~ 65535)

Pulse Low: 0 x 10ms (Range: 1 ~ 65535)

Timer Setting Page

Timer Amount: 0

Index: []

Period: 0 Sec

Initial Status: Stop

Recipe Attribute Setting Page

Recipe Amount: 0

Index: []

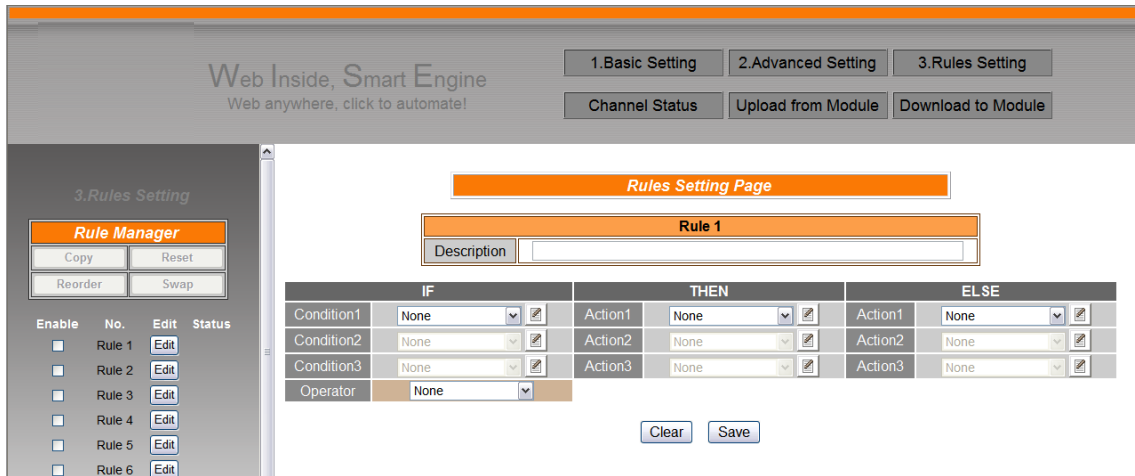
Action: None [Add]

Edit Delete [] [] [] [] Clear All

Save

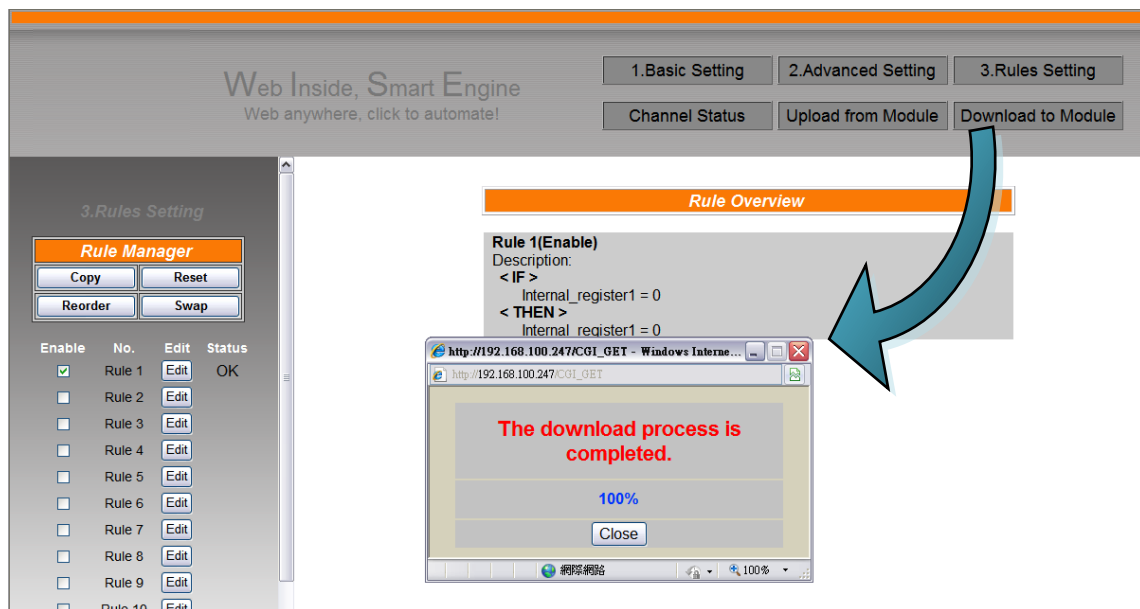
Step 6: Edit Rule Settings

Edit your IF-THEN-ELSE rules in the Rules Setting page.



Step 7: Download to Module

After finishing rules setting, download the rules to the OME-WISE-7000 Series module. The OME-WISE-7000 Series module will reboot and execute the rules automatically.



Step 8: For more detail information, please refer to OME-WISE-7000 Series User Manual

WARRANTY/DISCLAIMER

OMEGA ENGINEERING, INC. warrants this unit to be free of defects in materials and workmanship for a period of **13 months** from date of purchase. OMEGA's WARRANTY adds an additional one (1) month grace period to the normal **one (1) year product warranty** to cover handling and shipping time. This ensures that OMEGA's customers receive maximum coverage on each product.

If the unit malfunctions, it must be returned to the factory for evaluation. OMEGA's Customer Service Department will issue an Authorized Return (AR) number immediately upon phone or written request. Upon examination by OMEGA, if the unit is found to be defective, it will be repaired or replaced at no charge. OMEGA's WARRANTY does not apply to defects resulting from any action of the purchaser, including but not limited to mishandling, improper interfacing, operation outside of design limits, improper repair, or unauthorized modification. This WARRANTY is VOID if the unit shows evidence of having been tampered with or shows evidence of having been damaged as a result of excessive corrosion; or current, heat, moisture or vibration; improper specification; misapplication; misuse or other operating conditions outside of OMEGA's control. Components in which wear is not warranted, include but are not limited to contact points, fuses, and triacs.

OMEGA is pleased to offer suggestions on the use of its various products. However, OMEGA neither assumes responsibility for any omissions or errors nor assumes liability for any damages that result from the use of its products in accordance with information provided by OMEGA, either verbal or written. OMEGA warrants only that the parts manufactured by the company will be as specified and free of defects. OMEGA MAKES NO OTHER WARRANTIES OR REPRESENTATIONS OF ANY KIND WHATSOEVER, EXPRESSED OR IMPLIED, EXCEPT THAT OF TITLE, AND ALL IMPLIED WARRANTIES INCLUDING ANY WARRANTY OF MERCHANTABILITY AND FITNESS FOR A PARTICULAR PURPOSE ARE HEREBY DISCLAIMED. LIMITATION OF LIABILITY: The remedies of purchaser set forth herein are exclusive, and the total liability of OMEGA with respect to this order, whether based on contract, warranty, negligence, indemnification, strict liability or otherwise, shall not exceed the purchase price of the component upon which liability is based. In no event shall OMEGA be liable for consequential, incidental or special damages.

CONDITIONS: Equipment sold by OMEGA is not intended to be used, nor shall it be used: (1) as a "Basic Component" under 10 CFR 21 (NRC), used in or with any nuclear installation or activity; or (2) in medical applications or used on humans. Should any Product(s) be used in or with any nuclear installation or activity, medical application, used on humans, or misused in any way, OMEGA assumes no responsibility as set forth in our basic WARRANTY/DISCLAIMER language, and, additionally, purchaser will indemnify OMEGA and hold OMEGA harmless from any liability or damage whatsoever arising out of the use of the Product(s) in such a manner.

RETURN REQUESTS/INQUIRIES

Direct all warranty and repair requests/inquiries to the OMEGA Customer Service Department. BEFORE RETURNING ANY PRODUCT(S) TO OMEGA, PURCHASER MUST OBTAIN AN AUTHORIZED RETURN (AR) NUMBER FROM OMEGA'S CUSTOMER SERVICE DEPARTMENT (IN ORDER TO AVOID PROCESSING DELAYS). The assigned AR number should then be marked on the outside of the return package and on any correspondence.

The purchaser is responsible for shipping charges, freight, insurance and proper packaging to prevent breakage in transit.

FOR **WARRANTY** RETURNS, please have the following information available BEFORE contacting OMEGA:

1. Purchase Order number under which the product was PURCHASED,
2. Model and serial number of the product under warranty, and
3. Repair instructions and/or specific problems relative to the product.

FOR **NON-WARRANTY** REPAIRS, consult OMEGA for current repair charges. Have the following information available BEFORE contacting OMEGA:

1. Purchase Order number to cover the COST of the repair,
2. Model and serial number of the product, and
3. Repair instructions and/or specific problems relative to the product.

OMEGA's policy is to make running changes, not model changes, whenever an improvement is possible. This affords our customers the latest in technology and engineering.

OMEGA is a registered trademark of OMEGA ENGINEERING, INC.

© Copyright 2012 OMEGA ENGINEERING, INC. All rights reserved. This document may not be copied, photocopied, reproduced, translated, or reduced to any electronic medium or machine-readable form, in whole or in part, without the prior written consent of OMEGA ENGINEERING, INC.

Where Do I Find Everything I Need for Process Measurement and Control? **OMEGA...Of Course!** *Shop online at omega.com*

TEMPERATURE

- ☑ Thermocouple, RTD & Thermistor Probes, Connectors, Panels & Assemblies
- ☑ Wire: Thermocouple, RTD & Thermistor
- ☑ Calibrators & Ice Point References
- ☑ Recorders, Controllers & Process Monitors
- ☑ Infrared Pyrometers

PRESSURE, STRAIN AND FORCE

- ☑ Transducers & Strain Gauges
- ☑ Load Cells & Pressure Gauges
- ☑ Displacement Transducers
- ☑ Instrumentation & Accessories

FLOW/LEVEL

- ☑ Rotameters, Gas Mass Flowmeters & Flow Computers
- ☑ Air Velocity Indicators
- ☑ Turbine/Paddlewheel Systems
- ☑ Totalizers & Batch Controllers

pH/CONDUCTIVITY

- ☑ pH Electrodes, Testers & Accessories
- ☑ Benchtop/Laboratory Meters
- ☑ Controllers, Calibrators, Simulators & Pumps
- ☑ Industrial pH & Conductivity Equipment

DATA ACQUISITION

- ☑ Data Acquisition & Engineering Software
- ☑ Communications-Based Acquisition Systems
- ☑ Plug-in Cards for Apple, IBM & Compatibles
- ☑ Datalogging Systems
- ☑ Recorders, Printers & Plotters

HEATERS

- ☑ Heating Cable
- ☑ Cartridge & Strip Heaters
- ☑ Immersion & Band Heaters
- ☑ Flexible Heaters
- ☑ Laboratory Heaters

ENVIRONMENTAL MONITORING AND CONTROL

- ☑ Metering & Control Instrumentation
- ☑ Refractometers
- ☑ Pumps & Tubing
- ☑ Air, Soil & Water Monitors
- ☑ Industrial Water & Wastewater Treatment
- ☑ pH, Conductivity & Dissolved Oxygen Instruments