

**1 YEAR**  
WARRANTY



# **OMEGA®** **User's Guide**



***Shop online at  
omega.com®***

***e-mail: [info@omega.com](mailto:info@omega.com)  
For latest product manuals:  
[omegamanual.info](http://omegamanual.info)***

**ISO 9001**  
CERTIFIED  
CORPORATE QUALITY  
STAMFORD, CT

**ISO 9001**  
CERTIFIED  
CORPORATE QUALITY  
MANCHESTER, UK

## **DP9602 High Precision Digital Thermometer / Logger for RTD and Thermocouple Sensors**



**OMEGAnet® Online Service**  
**omega.com**

**Internet e-mail**  
**info@omega.com**

### **Servicing North America:**

**U.S.A.:**

ISO 9001 Certified

Omega Engineering, Inc., One Omega Drive, P.O. Box 4047  
Stamford, CT 06907-0047 USA  
Toll Free: 1-800-826-6342  
FAX: (203) 359-7700  
TEL: (203) 359-1660  
e-mail: info@omega.com

**Canada:**

976 Bergar  
Laval (Quebec), H7L 5A1 Canada  
Toll-Free: 1-800-826-6342  
FAX: (514) 856-6886  
TEL: (514) 856-6928  
e-mail: info@omega.ca

### **For immediate technical or application assistance:**

**U.S.A. and Canada:** Sales Service: 1-800-826-6342/1-800-TC-OMEGA®  
Customer Service: 1-800-622-2378/1-800-622-BEST®  
Engineering Service: 1-800-872-9436/1-800-USA-WHEN®

**Mexico/  
Latin America:**

En Español: 001 (203) 359-7803  
info@omega.com.mx  
FAX: 001 (203) 359-7807  
e-mail: espanol@omega.com

### **Servicing Europe:**

**Benelux:**

Managed by the United Kingdom Office  
Toll-Free: 0800 099 3344  
FAX: +31 20 643 46 43  
TEL: +31 20 347 21 21  
e-mail: sales@omegashop.nl

**Czech Republic:**

Frystatska 184  
733 01 Karviná, Czech Republic  
Toll-Free: 0800-1-66342  
FAX: +420-59-6311114  
TEL: +420-59-6311899  
e-mail: info@omegashop.cz

**France:**

Managed by the United Kingdom Office  
Toll-Free: 0800 466 342  
FAX: +33 (0) 130 57 54 27  
TEL: +33 (0) 161 37 29 00  
e-mail: sales@omega.fr

**Germany/ Austria:**

Daimlerstrasse 26  
D-75392 Deckenpfronn, Germany  
Toll-Free: 0800 6397678  
FAX: +49 (0) 7056 9398-29  
TEL: +49 (0) 7056 9398-0  
e-mail: info@omega.de

**United Kingdom:**  
ISO 9001 Certified

OMEGA Engineering Ltd.  
One Omega Drive, River Bend Technology Centre, Northbank  
Irlam, Manchester M44 5BD United Kingdom  
Toll-Free: 0800-488-488  
FAX: +44 (0) 161 777-6622  
TEL: +44 (0) 161 777-6611  
e-mail: sales@omega.co.uk

It is the policy of OMEGA Engineering, Inc. to comply with all worldwide safety and EMC/EMI regulations that apply. OMEGA is constantly pursuing certification of its products to the European New Approach Directives. OMEGA will add the CE mark to every appropriate device upon certification.

The information contained in this document is believed to be correct, but OMEGA accepts no liability for any errors it contains, and reserves the right to alter specifications without notice.

**WARNING:** These products are not designed for use in, and should not be used for, human applications.

# Contents

<b>1. About the DP9602</b>	<b>3</b>
<b>2. Installation</b>	<b>5</b>
a. Supply Connection	5
b. Communication Interface	5
c. Sensor Connection	6
<b>3. Stand Alone Operation</b>	<b>7</b>
a. To read sensor temperature directly	9
b. To read differential temperature	9
c. Matching DP9602 to calibrated sensors	10
d. SMART probe operation	11
e. Temperature measurement with calibrated sensor	11
f. Using DP9602 to obtain a secondary sensor calibration	12
g. On-board logging	13
h. Error indications	13
i. 3 or 4 wire recognition (RTD)	14
j. Variable filter rate	14
k. Cold junction compensation options	14
<b>4. Operation with a PC</b>	<b>16</b>
a. Install the software	16
b. Control panel	16
c. Sensor selection	17
d. Settings	17
e. Input channel	18
f. Units and resolution	18
g. Coefficients and corrections	18
h. Custom coefficients	19
i. SMART probe	20
j. Log	20
k. Memory	21
<b>5. Analogue D to A output</b>	<b>21</b>
<b>6. Instrument Re-Calibration</b>	<b>22</b>
<b>7. Specifications</b>	<b>24</b>

Information in this publication may be subject to change; the DP9602 is a micro-processor based, software driven instrument and may therefore be subject to software and hardware changes in line with our policy of continuous product development.

## I. About the DP9602

The DP9602 is fully characterised for RTD sensors and all major thermocouples J,K,N,T,E,R,S and B. Exceptionally stable automatic cold junction compensation with a rejection of 100:1 is incorporated for thermocouple ranges. Alternatively, external or manual referencing can be selected as required.

Displayed values and user information are indicated on a bright clear OLED screen. Data can be displayed in °C, °F, K,  $\Omega$  or mV as required; nine front panel push keys, the only user controls, are used in conjunction with the display screen. It is this arrangement which makes for very simple and “friendly” operation.

Resolution is a user selectable 0.001 or 0.01°C for RTD sensors and 0.1°C for thermocouples. All computations are performed digitally without drift. Overall stability is optimised by utilising only the highest quality components including high precision, expensive metal film resistor networks.

There are four input ports, two for thermocouples and two for 3 or 4 wire RTD sensors; the instrument automatically recognises 3 or 4 wire configurations.

The DP9602 can accept two RTD sensors and/or two thermocouples of similar or different types (J,K,N,T,E,R,S and B). The measured temperature can be displayed directly from one of the inputs or differentially between similar or different inputs. Differential temperature and the two individual channel temperatures are displayed simultaneously.

Individual calibrated sensors can have their appropriate calibration values programmed into the DP9602 using either the keypad or the PC software supplied. The PC software also allows corrections in the form of constants for individual RTD sensors to be programmed in. The non-volatile memory ensures that the values are retained (until such time as they are changed) even after switch-off. Where the calibration certificate relating to a particular probe states specific  $\Omega$  or mV values at stated temperatures, up to ten such values are entered into the DP9602 with their relevant temperature points using the front panel keypad or the software. The instrument then digitally self-calibrates to the associated probe over the range embraced by the calibrated values used; the temperature readout is “corrected” accordingly.

Additional manual procedures are not required to compute precise temperature readings since these are displayed directly; miscalculation errors are thus eliminated. Very high system accuracies, better than 25 milliKelvins can be achieved using probe matching.

Corrections which are “programmed in” can be displayed for confirmation. Values can be changed by an authorised user at any time.

For RTD inputs, SMART probes can be used which incorporate dedicated ‘correction values’ within the connector of each probe. When a SMART probe is connected to input A or B or both inputs, the corrections are automatically applied without the need for user intervention.

A common application for the DP9602 is the comparison calibration of “working” sensors against a calibrated reference standard or semi-standard sensor. For example, the sensor under test in channel B is compared against the reference sensor (with programmed corrections) in channel A.

When applied, the null function corrects the differential temperature readout between two sensors to zero. For example, the apparent temperature difference between two sensors known to be at the same actual temperature can be corrected to zero prior to, for example, heat exchanger experiments.

All four inputs can be scanned and values logged according to parameters set up by the user in the PC software; the instrument incorporates a real-time clock and on-board memory.

The adjustable brightness OLED display screen provides data readout, user prompts and mode annunciation. This very important feature ensures a high degree of user friendliness and confidence. User prompts indicate which buttons to press in the appropriate sequence when selecting parameters and functions and when setting calibration values. Mode annunciation indicates which mode of operation is currently selected.

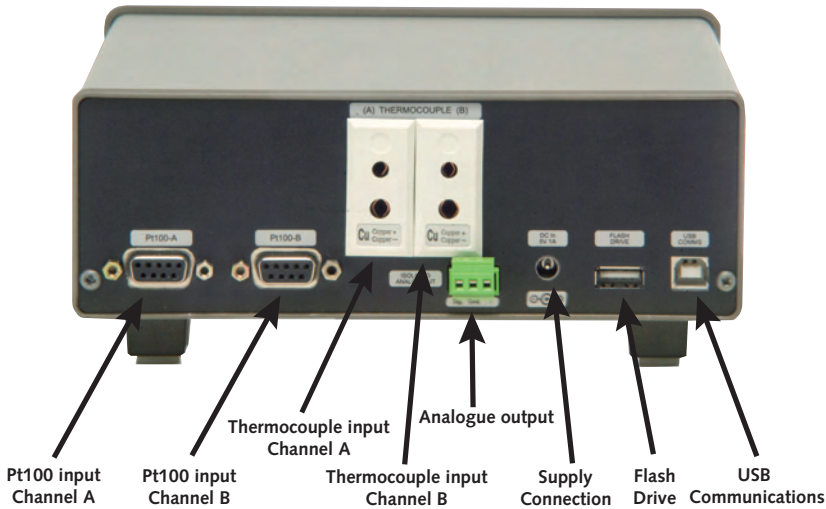
A flash drive USB port is provided to allow on-board data to be stored and/or exported. Firmware updates are also facilitated via this port.

PC software running in WINDOWS is provided as standard; it allows programming of custom calibration, remote control & measure and logging functions.

## 2. Installation

The instrument is for bench-top and portable use, folding 'legs' can be extended to provide a convenient viewing angle.

All connections are made to the rear panel as indicated.



### 2a Supply Connection

Refer to the rear panel illustration. Primary power is provided by the internal Lithium Ion battery which provides up to 12 hours of operation from a full charge. The external 90 to 260V 50/60Hz power supply allows recharging and continuous operation. The output lead with its fitted connector is plugged in to the rear panel socket 'DC in 5V 1A'.

Pressing the front panel 'POWER' key switches the instrument on / off.

The battery charge indicator in the top right of the display indicates the state of charge. The battery will charge whenever the instrument is connected to the power adaptor.

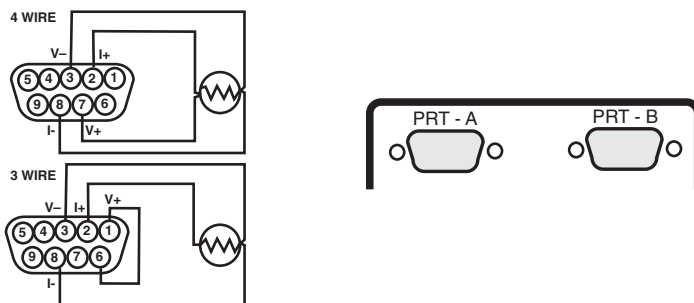
### 2b Communications Interface

Connect the USB cable supplied between the instrument and the PC. Refer to the rear panel illustration.

## 2c Input Connection – Sensors

Refer to the rear panel illustration.

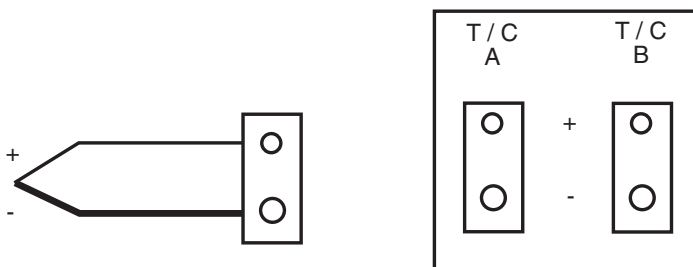
### i) RTD sensors



(RTDs) Platinum resistance thermometers must be fitted with a high quality D-plug and connected to input PRT-A and/or PRT-B as required. A 3 or 4 wire configuration can be used but they are connected differently as shown. The instrument will automatically sense which configuration is employed.

**Special care must be taken when connecting 3 wire RTD terminations to the connector pins. A good crimp must be achieved to avoid Ohmic contacts which would result in reading errors. Only use good quality connectors with gold contact material; the Labfacility D type is recommended.**

### ii) Thermocouples



Thermocouple(s) must be fitted with an appropriate compensating standard plug and connected to input T/C A and/or T/C B as required. When using an external cold junction (e.g. ice referencing), copper-copper (not compensating) plugs should be used.

**Application note:** Inputs are not isolated in the DP9602 which is primarily designed for laboratory applications and site calibration of industrial temperature sensors. Probes connected to the instrument must therefore be isolated from high voltage pick-up. Particular care must be taken when high temperature thermocouples are used with ceramic (refractory oxide) sheaths; these can become electrically conductive at elevated temperatures and mains pick-up can occur from electrical heaters.

**The instrument should be disconnected from the mains adaptor and operated from its internal batteries in such conditions.**

### 3. Operation



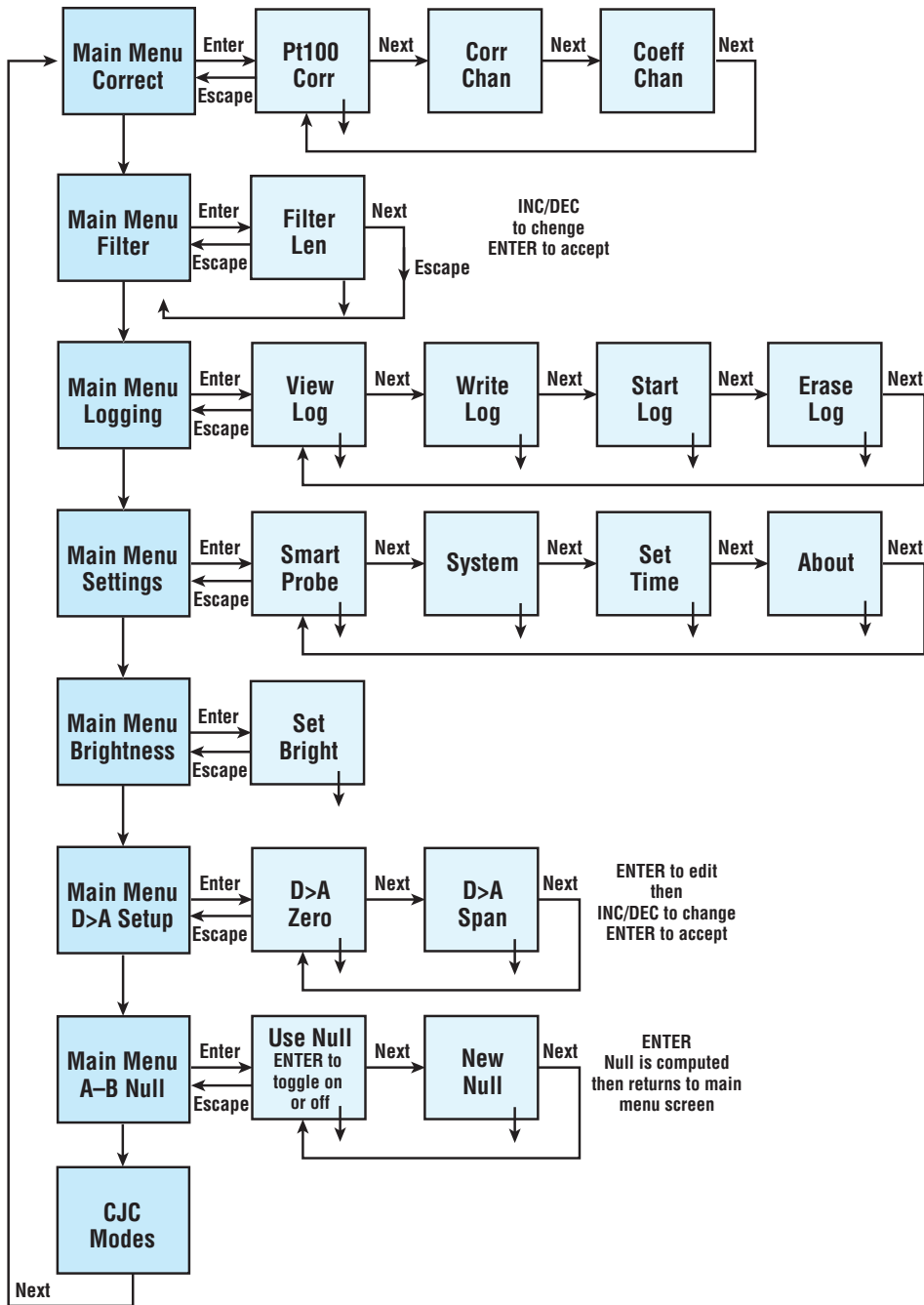
Ensure that the instrument is connected to a suitable supply and that the required connections are made.

**Switch on** using the 'POWER' key. The display will show the programme (firmware) designation followed by a short delay while the internal checks are carried out. The instrument will then commence normal operation according to the selected mode prior to switch-off, e.g. if channel B, RTD was in use when switched off, this will be the mode when switched on.

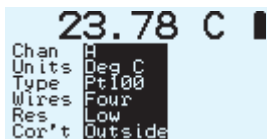
OPERATION requires the selection of appropriate menus which are shown on the display screen. Menu screens are obtained as shown in the following sections although the procedure is described in the text in each case.

Display brightness can be adjusted as required in the 'SETTINGS' sub-menu described later.





### 3a To read sensor temperature directly



Press 'SENSOR' key to select the required type of sensor if different to that currently indicated

Brief repeated key presses will step through the various types or holding the key depressed will auto-repeat (scroll through); this applies to other functions as well.

**NOTE: If for any selected channel the sensor is either not connected (including sensor open circuit) the display will show 'BROKEN PROBE'.**

Press 'CHANNEL' to select inputs A, B or A-B (differential)

Press UNITS to display the desired units °C, °F, K, mV or  $\Omega$  (dependent on the type of sensor selected).

**Note: Only units applicable to the selected sensor type can be displayed e.g. not mV for Pt100 and not  $\Omega$  for thermocouples.**

For Pt100 only, press 'RESOLUTION' to display the desired resolution, either 0.01 or 0.001 for °C, K and  $\Omega$  only. Only 0.01 resolution can be used with °F.

### 3b To read differential temperature

The difference in temperature between two sensors of similar or dissimilar type can be obtained by displaying channel A-B. Ensure that the required sensors are connected to the appropriate A and B inputs.

Press 'CHANNEL' to select A-B after first setting up the individual channels A and B with sensor type and corrections ON/OFF as required. Press 'UNITS' to display the desired temperature units which must be appropriate to both types of sensor. The value now displayed is the difference value between sensors A and B as selected (i.e. A-B).

For calorimetry and certain other applications, to optimise the precision of such differential measurements, the probe tolerances can be nulled as follows:

Nulling procedure requires the relevant probes A and B to be tagged for repeatability. Ensure that both sensors are held at the same temperature (say 0°C or other value) and measure A-B.

It is possible to null out differences between the two sensors measured differentially as follows:

Obtain the 'NULL' menu A-B Null by scrolling through the sub-menus until the menu appears. Press 'ENTER'.

The display screen shows: **=USE NULL ON/OFF & VALUE=**

- i) Acquiring a new null
- ii) Applying a measured null value

The last null value will be applied such that the display value used is (A-B) – (Null value).

The display screen shows: **ACQUIRE NEW A-B  
NULL VALUE (DEG C)  
VALUE =**

### 3c Matching DP9602 to calibrated sensors

It is possible to automatically match the DP9602 to RTD or thermocouple sensors with dedicated calibration values via the PC software (see p18). Such values published in associated certificate indicate true  $\Omega$ , mV,  $^{\circ}\text{C}$  and value corresponding to accurately known reference temperatures.

Viewing corrections via the keypad

- I. Obtain the required thermocouple (TC) or Pt100 (PRT) 'CORRECTIONS' menu; press 'MENU' and then 'CORRECT'. Press 'ENTER'.

**Main Menu**   
**Correct**

The display screen shows: **VIEW CORRECTIONS or VIEW CORRECTIONS  
FOR THERMOCOUPLES FOR Pt100 SENSORS**

### 3d SMART probe operation

#### SmartProbe

View Smart-Probe Data

In the main menu, scroll down to 'SETTINGS' and press 'ENTER'. The smart probe screen is shown. Press 'ENTER' to view the Smart Probe data (table of values). The probe tag and values are displayed when an appropriate probe is connected to the instrument.

```
smPROBE A S/No 1234
Deg C      Ohms
2.111      102.111
Point Number 01
```

#### For custom coefficients

In the correction menu, scroll down to 'COEFF' screens and follow the prompts to view or apply values and to specify relevant channel (ie A / B / Both / off). Press ENTER to select..

#### Coef Chan

```
Select Coefficient
Pt100 correction Mode
Set to Off
```

### 3e Temperature Measurement with Calibrated Sensor

To use the DP9602 with its associated calibrated sensor, ensure that;

1. The appropriate sensor(s) is/are connected to the relevant input(s) A or B.
2. Select the relevant channel to suit, ensure that the correct sensor type is selected.
3. Then obtain 'correct' menu; press 'MENU'; the 'correct' menu is obtained. Scroll through options as required.

#### Main Menu

Correct

CORRECT	OFF
CORRECT	A
CORRECT	B
CORRECT	A+B

Press 'ENTER' to select.

Press 'ESCAPE' to return to the main display which will confirm the corrections status (CORRECT OFF OR CORRECTED).

There are eight annunciations to indicate the status of corrections when taking readings with the DP9602:

### Display screen

annunciation	Status
1) OFF	
2) N/A	(i.e. when units are mV or Ohms)
3) OUTSIDE	Tables either Local or Probe are selected but the current electrical measurement is beyond the electrical range defined in tables)
4) No Pts	(Tables selected, but no table found)
5) Local T	(Local tables i.e. in the instrument are applied)
6) Local C	(Local coefficients i.e. in the instrument are applied)
7) Probe T	(Probe tables i.e. in the Probe are applied)
8) Probe C	(Probe coefficients i.e. in the Probe are applied)

## 3f Using DP9602 to obtain a secondary Calibration

There are two ways in which a non-calibrated sensor can be converted into a secondary standard using a 'sensor matched' DP9602.

By means of CHANNEL A-B measurement. Connect the certified sensor to Channel A and the un-calibrated sensor to Channel B. The sensors can be of similar or dissimilar type, e.g. RTD certified sensor on Channel A and type K thermocouple on T/C B.

**NOTE: A-B display values at various stable, isothermal calibration temperatures and compute sensor B corrected values accordingly. If sensors A and B are of either similar or dissimilar types, read only in degrees of temperature.**

Connect the certified sensor to Channel A and the un-calibrated sensor to Channel B.

Compare direct A and B readings in turn at various stable, isothermal calibration temperatures and compute sensor B corrected values accordingly. On this basis, a range of values can be obtained for use in 'correct B' matching (procedure as section 3iii)

3g On-Board Logging



Select 'LOGGING' in the MENU. Press 'ENTER' to view, write, start, erase log. Select the required memory slot (1 to 15) and enter the logging parameters. Follow the on-screen prompts. Press 'ESCAPE' to exit the logging menu.

3h Error indications

The DP9602 has several modes of error indication according to internal or external problems as follows:

DISPLAY	CAUSE
BROKEN PROBE	Open circuit sensor or sensor not connected to input
OUT OF RANGE	Thermocouple ranges only; input mV value outside calibration range (below min.Value or above full span value
ILLEGAL A-B MODE	A-B mode will only operate with C, F or Kelvin units
CAL LOST	All calibration values corrupted or lost. Perform re-calibration or RETURN TO FACTORY
CPU ERROR	Failure of the two microprocessors to communicate. RETURN TO FACTORY
BATTERY FLAT PLEASE RE-CHARGE	Inadequate battery charge to sustain operation within specification

**Note:** During normal operation, if selected probe is disconnected from the instrument the display will indicate **BROKEN PROBE**. If the same probe is re-connected, normal operation will be resumed.

### 3i 3 or 4 Wire Recognition (RTD)

The DP9602 requires a minimum of 80 milliOhms lead resistance (e.g. 1 metre of 7 stranded 0.2mm $\Omega$  wire) to recognise a 4 wire probe. Otherwise the instrument will default (perhaps correctly) to 3 wire mode.

If simulating a sensor input or calibrating the instrument, ensure 80m $\Omega$  lead resistance between the resistance source and D plug (e.g. 1 metre of 7 x 0.2mm Copper Cable).

### 3j Variable Filter Rate

In high resolution mode (RTD inputs only), the sampling rate can be varied between 4 and 64 (i.e. the number of measurements averaged per display update). The selection is made via the edit filter menu obtained as follows:



The image shows a digital display with the text 'Main Menu' on the top line and 'Filter' on the bottom line. The text is in a monospaced font, typical of a handheld electronic device's LCD screen.

Press 'MENU' then 'NEXT'. The edit filter menu is obtained.

The Display indicates:

**SELECT FILTER LENGTH 0.1 SECONDS  
EACH VALUE =**

Using the 'Up/Down' keys, enter the required value. Press 'ENTER' and the resultant value will be stored until changed by the user. Press 'ESCAPE' to return to the main display.

### 3k Cold Junction Compensation Options

The DP9602 will provide automatic INTERNAL cold junction compensation (CJC) for thermocouple inputs unless one of two alternatives is selected by the user. These are:

- Manual** – internal setting of any desired reference (cold junction) 'temperature'. This defaults to the ice point, 0°C, the most common value used, unless adjusted.
- External** – source of temperature via a Pt100 sensor connected to PRT channel A or B.

## Manual CJ

This is used when thermocouple readings need to be referred to 0°C or so some other reference temperature. Selection is carried out as follows:

Press 'MENU' then press 'NEXT' repeatedly until the CJC menu is obtained.

Press 'ENTER'.

Main Menu   
CJC Modes

The display indicates:

**EDIT MANUAL CJC**  
**VALUE (DEG C)**  
**VALUE =**

CJC Mode   
CJC Mode Channel A  
Set to **Int.al**

## External CJ

This is used when thermocouple readings need to be referenced to a 'physical' temperature which exists in an external unit e.g. ice reference bath. An external RTD sensor is required to sense such temperature and this sensor should be a high quality, close tolerance device (e.g. I/10 DIN specification). However, corrected values cannot be used for this function.

Proceed as follows;

Press 'MENU' then press 'NEXT' repeatedly until the 'SET CJC' mode menu is obtained. Press 'ENTER'.

The display indicates:

**CJC MODE CHANNEL;**  
**SET TO**

Press the 'ENTER' key to obtain channel A or B as required. The selected channel is stored until changed by the user. Press 'ESCAPE' to return to the main display which will indicate the CJ source i.e. internal, channel A or channel B.



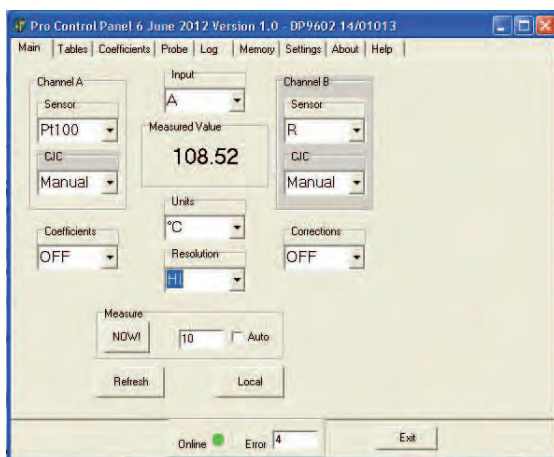
## 4. Operation with a PC

### 4a Install the Software

For use with a PC the software supplied with the DP9602 must be installed on the PC and communication established (on-line green indicator showing) via the USB lead supplied. System requirements for installing the software: Windows XP with at least one USB port. All Windows operating systems prior to XP do not support USB natively and are not recommended.

### 4b Control Panel

In the PRO Software window, double click on the 'PRO Control Panel' icon. The following window is opened:



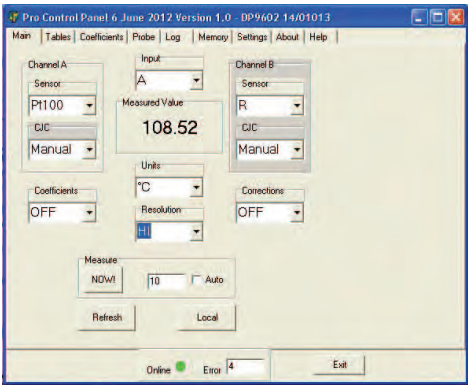
*Note: When the control panel is opened subsequently, the tab selected prior to closing will be applicable.*

The on-line indicator shows 'green' when communications between the instrument and the PC are established (see 'settings' on page 17). Local control of the instrument is not possible (locked out) when communications between instrument and PC are established and 'Remote' selected (remote control). The front panel indicates 'REM'. To revert to local control of the instrument (via the front panel), click 'LOCAL'; remote control via the PC is disabled.

### 4c Sensor Selection

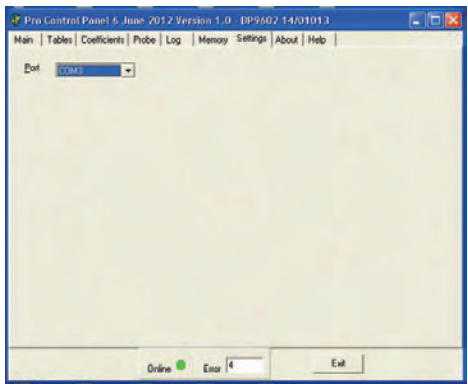
In the ‘Main’ window, the sensors currently selected for channel A and B are indicated in the relevant boxes. Alternative sensor types for each channel can be selected by clicking the drop down arrow to the right of the indicated sensor and clicking on the desired type.

*Note: it is essential to ensure that the sensor type selected corresponds to the actual sensor type connected to the instrument.*



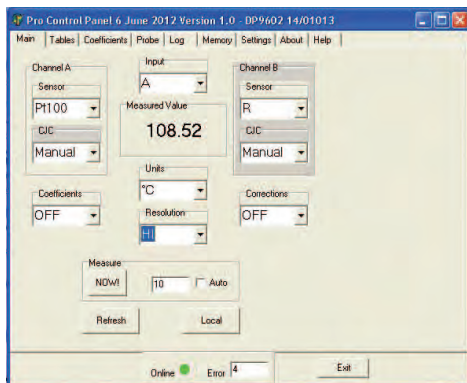
### 4d Settings

Click on the ‘SETTINGS’ tab for port selection if required. In many cases this may not be required since communications may be established automatically. If not, simply click on the appropriate port.



## 4e Input Channel

Select A or B from the 'INPUT' box in the top centre of the control panel; the measured value is displayed below in the 'MEASURED VALUE' box when 'MEASURE NOW' button is clicked.



## 4f Units and Resolution

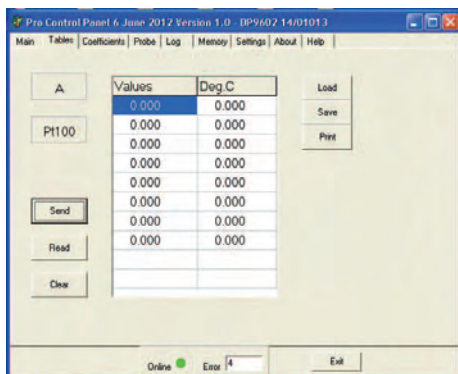
These are selected via the appropriate boxes in the 'Control Panel'.

## 4g Coefficients and Corrections

These are selected as required for each channel, their values having been set (or default settings) via screens obtained by selecting tables 'coefficients' and/or 'Tables'.

Matching to calibrated sensors (Tables Tab):

- i) Select the desired input A or B in the MAIN window appropriate to the chosen calibrated probe.
- ii) Click on the 'TABLES' Tab

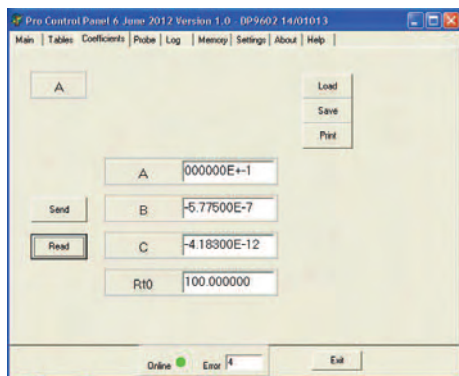


- iii) Enter up to ten values of engineering units with 3 decimal places (e.g. 100.100Ohms & 0.000°C) corresponding to the temperature as stated on the calibration certificate for the 'reference' probe and click 'SEND'; this sends a table of values to the instrument. Existing values will be overwritten.
- iv) Stored 'correction' values can be switched ON or OFF as required in the 'Main' window.
- v) Clicking 'READ' displays stored values (may be rounded up or down).
- vi) Clicking 'CLEAR' clears values entered in the table on the window (not from the instrument).
- vii) Click 'LOAD' to load a corrections table from file.
- viii) Click 'SAVE' to save the corrections table to file.
- ix) Click 'PRINT' to print the corrections table.

#### 4h Custom Coefficients

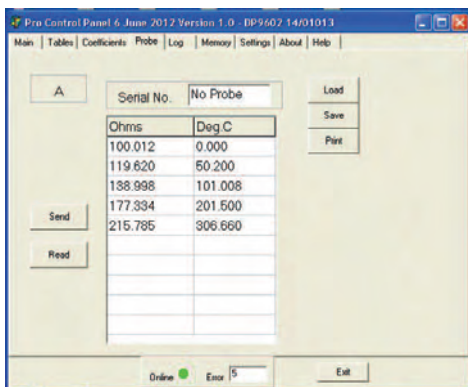
These can be used to effectively modify the transfer characteristic of a sensor if required. The default coefficients are those for ITS 90; IPTS 68 was required for example, the appropriate values could be entered.

- i) The required channel, A or B as appropriate to the sensor in question must be selected in the 'MAIN' window.
- ii) Click on the 'COEFFICIENTS' tab.



- iii) Enter the required values for A, B, C and Rto as appropriate and click 'SEND' to send these values to the instrument; existing values will be overwritten.
- iv) Click 'READ' to see stored values at any time.
- v) Click 'LOAD' to load a set of coefficients from file.
- vi) Click 'SAVE' to save file.
- vii) Click 'PRINT' to print the coefficients.

## 4i SMART Probe

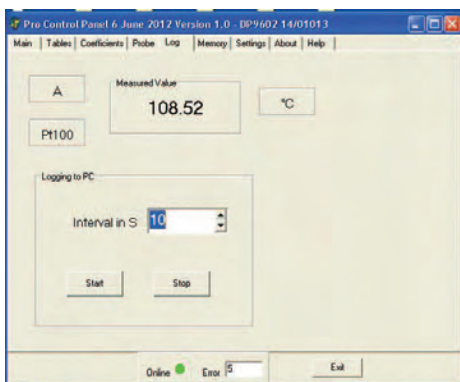


Click on the 'Probe' tab to view the SMART probe window. This window is very similar to the one in the 'Tables' tab and the values stored in the probe can be read, entered or edited.

The probe Serial No. is shown and can be modified to suit.

Click SAVE to save the values to the probe as required.

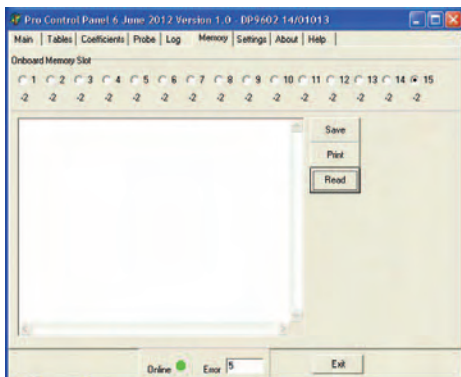
## 4j Log



This tab is used to control PC logging of measured values (i.e. readings are saved to file on the PC and not on-board the instrument). Readings are saved in the same folder as that in which the software resides.

The selected channel (as configured in the 'Main' tab) is indicated and the selected sensor type. Measured value and units are also displayed. In the 'Logging to PC' panel, the logging interval is selected (1 to 3600 seconds). Logging commences when 'START' is clicked and stopped when 'STOP' is clicked.

## 4k Memory



In this tab, readings stored on board the instrument can be retrieved and saved to file (normally in the same folder which contains the PC software).

- i) Click 'READ' to read the values.
- ii) Click 'SAVE' to save the readings to file.
- iii) Click 'PRINT' to print the readings.

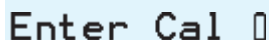
## 5. Analogue (D to A) re-transmission output

Main Menu  
D>A Setup

In the main menu, scroll down to D>A Setup and press 'ENTER'. Follow the on-screen prompts to set up zero and span (degrees C) values. Press 'ENTER' to Edit Zero (value) and press 'NEXT' to highlight the existing value; press 'NEXT' repeatedly to obtain the desired value. Then press 'ENTER' to store the specified value. Press 'ESCAPE' and then 'NEXT'; repeat the procedure for the span value.

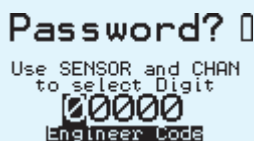
## 6. Instrument Re-Calibration

It is recommended that this procedure is carried out by the supplier or by an accredited laboratory facility.



Enter Cal  

**Calibration must only be performed by an authorised person and in the laboratory with a steady ambient temperature;** access to the calibration level of the software is via a 5 digit 'engineer' code; this must be entered at the prompt by pressing 'INC/DEC' sequentially for the first digit. Then press 'SENSOR' or 'UNITS' to move to the next digit.



Password?    
Use SENSOR and CHAN  
to select Digit  
00000  
Engineer Code

Re-calibration of the DP9602 is unlikely to be required routinely since its design provides very good short and long term stability.

Item required for calibration:

- i) A highly accurate 80mV dc source.
- ii) A highly accurate resistance source providing 100.000Ω and 250.000Ω (No lead resistance).
- iii) A miniature PRT assembly with I/10 DIN tolerance detector available to special order from Labfacility Ltd.
- iv) Suitable connectors for the rear panel sockets as appropriate.

**CAUTION – Do not proceed unless all specified items are available.  
Failure to do so may invalidate the warranty.**

Connect a 100 Ohm resistance to the PRT-A input port. The instrument displays the value of the 100 Ohm input according to its previous calibration. The instrument now measures the precise resistance and displays the value. Press 'ENTER' and the value is sampled and entered. Press 'ESCAPE' if calibration of the channel is not required.

- a) *The display screen now shows;*

**CALIBRATION**

**CH A PRT 100 OHMS**

Connect a 250 Ohm resistance to the PRT-A port. The instrument now measures the precise resistance and displays the value. Press 'ENTER' and the value is sampled and entered.

- b) *The display screen now shows;*

**CALIBRATION**

**CH B PRT 100 OHMS**

Repeat the procedure as in c) above but using the PRT-B input port.

- c) *The display screen now shows;*

**CALIBRATION**

**CH B PRT 250 OHMS**

Repeat the procedure as in d) above but using the PRT-B input port.

- d) *The display screen now shows;*

**CALIBRATION**

**80 MV INTO TC A**

Connect the 80mV source to the T/CA input port using an uncompensated connector. The display shows the measured value in uV. Press 'ENTER'. Remove the 80mV signal.

- e) *The display screen now shows;*

**CALIBRATION**

**SET CJC**

This prompts the CJC set-up procedure. Connect the RTD assembly to the PRT-A input port and place the probe in close proximity to the thermocouple input connectors. Place some form of thermal insulation around the RTD probe (cloth or towel for example). The display will show a temperature difference value between its internal block measurement and that obtained from the test probe. Allow several minutes for stabilisation and note when the reading is steady. Then, carefully trim for a zero reading.



## 7. Specifications

### General

	Inputs/Ranges/Sensors		
Type	RTD (Pt100) to IEC 751 (ITS 90 refers). -200°C to +850°C Ro = 100Ω 3 or 4 wire connection with automatic recognition (with manual override)  Thermocouples to IEC 584 No isolation exists between inputs.		
Type	Type S -50 to 1768°C Type R -42 to 1766°C Type B +254 to 1818°C  Type J -200 to 1200°C Type K -195 to 1370°C Type E -190 to 995°C Type N -160 to 1300°C Type T -193 to 399°C	Noble Metal    Base Metal	
Overall Accuracy	Pt100 ± 0.01°C ± 0.0005% of span  Thermocouples i) Base Metal ± 0.2°C from -50°C to 700°C  ± 0.4°C from -200°C to -50°C ± 0.4°C from 700°C to		ii) Noble Metal ± 0.3°C from 850°C to full scale ± 0.4°C below 850°C ± 0.7°C below 0°C
full scale	Note: Type B not characterized below +200°C		
Linearisation Conformity	<b>Pt100</b> Better than ± 0.01°C  <b>Thermocouples</b> ± 0.05°C base metal (-200°C to span) ± 0.1°C noble metal above 200°C		
<b>Note: Performance of ADC (0.5µV resolution ) is superior to published thermocouple table best resolution of 1µV.</b>			
Stability (vs ambient temperature)	<b>Pt100 (RTD)</b> Better than 0.0025°C per 1°C ambient change		

### **Thermocouples**

Zero: negligible drift excluding CJC effect

Scale:  $< \pm 0.1^{\circ}\text{C}$  in  $15^{\circ}\text{C}$

Warm-up

Negligible under normal ambient conditions. Allow 5-10 minutes for full stability unless stored at low temperature, then 30 minutes minimum.

Cold Junction Compensation

Automatic on all thermocouple ranges. Better than  $\pm 1^{\circ}\text{C}$  max shift for  $\pm 10^{\circ}\text{C}$  ambient variation (100:1) or External via Pt100 on channel A or B or Manual input of CJ temperature value.

Pt100 Sensor Current

0.5mA

Resolution of data display

### **Pt100**

0.01/0.001 user select for  $^{\circ}\text{C}$ , K and  $\Omega$

Variable filter

Sampling rate selectable between 4 and 64 (measurements averaged per reading).

### **Thermocouples**

0.1 $^{\circ}\text{C}$  all ranges

Measurement Units

$^{\circ}\text{C}$ ,  $^{\circ}\text{F}$ , K,  $\Omega$  or mV as applicable to sensor

Measurement Modes

A, B or A-B. Any combination of sensor types.

Custom Calibration

Up to 10 calibration values can be allocated to Pt100 input A & B and to thermocouples input A & B. Values are retained in non-volatile memory until replaced by user. Alternatively, for Pt100 inputs ITS 90 or IPTS 68 coefficients can be used for custom calibration.

Smart Sensor Connection

Pt100 inputs only. Correction values stored in connector.

Null Function

Corrects differential temperature readout between two sensors to zero.

Sensor Lead

### **Pt100**

Resistance

5 $\Omega$  each lead maximum

### **Thermocouples**

300 $\Omega$  loop total

Logging

8000 readings

Supply

Internal Lithium Ion rechargeable batteries. Mains 90-260V 50/60Hz universal adaptor included. Battery charge life up to 12 hours with full charge.

Series Mode Rejection

60dB @ 50Hz (50mV RMS applied)

Common Mode Rejection	30V RMS applied between input and earth produces no measurable effect.
Display	128 x 64 pixel OLED with diffused backlighting. Wide viewing angle, high contrast (adjustable).
Front Panel Controls	9 membrane push-keys to control all instrument functions
Mechanical/Case	Metal bench top case / adjustable tilt
Dimensions	Overall 190mm(W) x 70mm(H) x 250mm(D)
Weight	3.0kg approx.
Input Connections	2 x Pt100 via D type connectors 2 x Thermocouple via standard sockets.
USB Serial Communications	Isolated, 38400 Baud, 8 data, no parity, 1 stop bit. Remote control and measure.
PC Software (standard)	Supplied as standard on CD ROM. Remote control and measure: Log readings to file/Download to PC/Programming corrections
Analogue Output (standard)	User programmable, 0 to 5V

**Application Note:**

*Inputs are not isolated in the DP9602 which is primarily designed for laboratory applications and site calibration of industrial temperature sensors. Probes connected to the instrument must therefore be isolated from high voltage pick-up. Particular care must be taken when high temperature thermocouples are used with ceramic (refractory oxide) sheaths; these can become electrically conductive at elevated temperatures and mains pick-up can occur from electrical heaters.*

***The instrument should be disconnected from the mains adaptor and operated from its internal batteries in such situations.***

## WARRANTY/DISCLAIMER

OMEGA ENGINEERING, INC. warrants this unit to be free of defects in materials and workmanship for a period of **13 months** from date of purchase. OMEGA's WARRANTY adds an additional one (1) month grace period to the normal **one (1) year product warranty** to cover handling and shipping time. This ensures that OMEGA's customers receive maximum coverage on each product.

If the unit malfunctions, it must be returned to the factory for evaluation. OMEGA's Customer Service Department will issue an Authorized Return (AR) number immediately upon phone or written request. Upon examination by OMEGA, if the unit is found to be defective, it will be repaired or replaced at no charge. OMEGA's WARRANTY does not apply to defects resulting from any action of the purchaser, including but not limited to mishandling, improper interfacing, operation outside of design limits, improper repair, or unauthorized modification. This WARRANTY is VOID if the unit shows evidence of having been tampered with or shows evidence of having been damaged as a result of excessive corrosion; or current, heat, moisture or vibration; improper specification; misapplication; misuse or other operating conditions outside of OMEGA's control. Components in which wear is not warranted, include but are not limited to contact points, fuses, and triacs.

**OMEGA is pleased to offer suggestions on the use of its various products. However, OMEGA neither assumes responsibility for any omissions or errors nor assumes liability for any damages that result from the use of its products in accordance with information provided by OMEGA, either verbal or written. OMEGA warrants only that the parts manufactured by the company will be as specified and free of defects. OMEGA MAKES NO OTHER WARRANTIES OR REPRESENTATIONS OF ANY KIND WHATSOEVER, EXPRESSED OR IMPLIED, EXCEPT THAT OF TITLE, AND ALL IMPLIED WARRANTIES INCLUDING ANY WARRANTY OF MERCHANTABILITY AND FITNESS FOR A PARTICULAR PURPOSE ARE HEREBY DISCLAIMED. LIMITATION OF LIABILITY: The remedies of purchaser set forth herein are exclusive, and the total liability of OMEGA with respect to this order, whether based on contract, warranty, negligence, indemnification, strict liability or otherwise, shall not exceed the purchase price of the component upon which liability is based. In no event shall OMEGA be liable for consequential, incidental or special damages.**

CONDITIONS: Equipment sold by OMEGA is not intended to be used, nor shall it be used: (1) as a "Basic Component" under 10 CFR 21 (NRC), used in or with any nuclear installation or activity; or (2) in medical applications or used on humans. Should any Product(s) be used in or with any nuclear installation or activity, medical application, used on humans, or misused in any way, OMEGA assumes no responsibility as set forth in our basic WARRANTY/DISCLAIMER language, and, additionally, purchaser will indemnify OMEGA and hold OMEGA harmless from any liability or damage whatsoever arising out of the use of the Product(s) in such a manner.

## RETURN REQUESTS/INQUIRIES

Direct all warranty and repair requests/inquiries to the OMEGA Customer Service Department. BEFORE RETURNING ANY PRODUCT(S) TO OMEGA, PURCHASER MUST OBTAIN AN AUTHORIZED RETURN (AR) NUMBER FROM OMEGA'S CUSTOMER SERVICE DEPARTMENT (IN ORDER TO AVOID PROCESSING DELAYS). The assigned AR number should then be marked on the outside of the return package and on any correspondence.

The purchaser is responsible for shipping charges, freight, insurance and proper packaging to prevent breakage in transit.

FOR **WARRANTY** RETURNS, please have the following information available BEFORE contacting OMEGA:

1. Purchase Order number under which the product was PURCHASED,
2. Model and serial number of the product under warranty, and
3. Repair instructions and/or specific problems relative to the product.

FOR **NON-WARRANTY** REPAIRS, consult OMEGA for current repair charges. Have the following information available BEFORE contacting OMEGA:

1. Purchase Order number to cover the COST of the repair,
2. Model and serial number of the product, and
3. Repair instructions and/or specific problems relative to the product.

OMEGA's policy is to make running changes, not model changes, whenever an improvement is possible. This affords our customers the latest in technology and engineering.

OMEGA is a registered trademark of OMEGA ENGINEERING, INC.

© Copyright 2012 OMEGA ENGINEERING, INC. All rights reserved. This document may not be copied, photocopied, reproduced, translated, or reduced to any electronic medium or machine-readable form, in whole or in part, without the prior written consent of OMEGA ENGINEERING, INC.

# Where Do I Find Everything I Need for Process Measurement and Control?

**OMEGA...Of Course!**

***Shop online at [omega.com](http://omega.com)<sup>SM</sup>***

## **TEMPERATURE**

- ☑ Thermocouple, RTD & Thermistor Probes, Connectors, Panels & Assemblies
- ☑ Wire: Thermocouple, RTD & Thermistor
- ☑ Calibrators & Ice Point References
- ☑ Recorders, Controllers & Process Monitors
- ☑ Infrared Pyrometers

## **PRESSURE, STRAIN AND FORCE**

- ☑ Transducers & Strain Gages
- ☑ Load Cells & Pressure Gages
- ☑ Displacement Transducers
- ☑ Instrumentation & Accessories

## **FLOW/LEVEL**

- ☑ Rotameters, Gas Mass Flowmeters & Flow Computers
- ☑ Air Velocity Indicators
- ☑ Turbine/Paddlewheel Systems
- ☑ Totalizers & Batch Controllers

## **pH/CONDUCTIVITY**

- ☑ pH Electrodes, Testers & Accessories
- ☑ Benchtop/Laboratory Meters
- ☑ Controllers, Calibrators, Simulators & Pumps
- ☑ Industrial pH & Conductivity Equipment

## **DATA ACQUISITION**

- ☑ Data Acquisition & Engineering Software
- ☑ Communications-Based Acquisition Systems
- ☑ Plug-in Cards for Apple, IBM & Compatibles
- ☑ Data Logging Systems
- ☑ Recorders, Printers & Plotters

## **HEATERS**

- ☑ Heating Cable
- ☑ Cartridge & Strip Heaters
- ☑ Immersion & Band Heaters
- ☑ Flexible Heaters
- ☑ Laboratory Heaters

## **ENVIRONMENTAL MONITORING AND CONTROL**

- ☑ Metering & Control Instrumentation
- ☑ Refractometers
- ☑ Pumps & Tubing
- ☑ Air, Soil & Water Monitors
- ☑ Industrial Water & Wastewater Treatment
- ☑ pH, Conductivity & Dissolved Oxygen Instruments