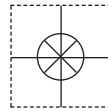


1 YEAR
WARRANTY

MADE IN
USA



Ω OMEGA® **User's Guide**



***Shop online at
omega.com®***

***e-mail: info@omega.com
For latest product manuals:
omegamanual.info***

ISO 9001
CERTIFIED
CORPORATE QUALITY

STAMFORD, CT

ISO 9001
CERTIFIED
CORPORATE QUALITY

MANCHESTER, UK

UWXL-24-PC **Long Distance Industrial Wireless** **Process Voltage and Current** **Input Transmitter**



OMEGAnet® Online Service
omega.com

Internet e-mail
info@omega.com

Servicing North America:

U.S.A.: Omega Engineering, Inc., One Omega Drive, P.O. Box 4047
ISO 9001 Certified Stamford, CT 06907-0047 USA
Toll Free: 1-800-826-6342 TEL: (203) 359-1660
FAX: (203) 359-7700 e-mail: info@omega.com

Canada: 976 Berar
Laval (Quebec), H7L 5A1, Canada
Toll-Free: 1-800-826-6342 TEL: (514) 856-6928
FAX: (514) 856-6886 e-mail: info@omega.ca

For immediate technical or application assistance:

U.S.A. and Canada: Sales Service: 1-800-826-6342 / 1-800-TC-OMEGA®
Customer Service: 1-800-622-2378 / 1-800-622-BEST®
Engineering Service: 1-800-872-9436 / 1-800-USA-WHEN®

**Mexico/
Latin America:** TEL: 001 (203) 359-1660 FAX: 001 (203) 359-7700
e-mail: espanol@omega.com

Servicing Asia:

China: 1698 Yishan Road, Unit 102
Minhang District
Shanghai, China 201103
Hotline: 800 819 0559 / 400 619 0559
e-mail: info@cn.omega.com

Servicing Europe:

Benelux: Toll-Free: 0800 099 3344 TEL: +31 20 347 21 21
FAX: +31 20 643 46 43 e-mail: sales@omegaeng.nl

Czech Republic: Frystatska 184
733 01 Karviná, Czech Republic
TEL: +420-59-6311899 FAX: +420-59-6311114
e-mail: info@omegashop.cz

France: Toll-Free: 0800 541 038 TEL: 01 57 32 48 17
FAX: 01 57 32 48 18 e-mail: esales@omega.fr

Germany/ Austria: Daimlerstrasse 26
D-75392 Deckenpfronn, Germany
Toll-Free: 0800 8266342 TEL: +49 (0) 7056 9398-0
FAX: +49 (0) 7056 9398-29 e-mail: info@omega.de

United Kingdom: OMEGA Engineering Ltd.
ISO 9001 Certified One Omega Drive, River Bend Technology Centre, Northbank
Irlam, Manchester M44 5BD United Kingdom
Toll-Free: 0800-488-488 TEL: +44 (0) 161 777-6611
FAX: +44 (0) 161 777-6622 e-mail: sales@omega.co.uk

It is the policy of OMEGA Engineering, Inc. to comply with all worldwide safety and EMC/EMI regulations that apply. OMEGA is constantly pursuing certification of its products to the European New Approach Directives. OMEGA will add the CE mark to every appropriate device upon certification.

The information contained in this document is believed to be correct, but OMEGA accepts no liability for any errors it contains, and reserves the right to alter specifications without notice.

WARNING: These products are not designed for use in, and should not be used for, human applications.



Table of Contents

Section	Page
Section 1 Introduction	1-1
1.1 Precautions	1-1
1.2 Safety Warnings and IEC Symbols	1-1
1.3 Product Labeling	1-2
1.4 Statement on FCC.....	1-2
1.5 General Description & System Components	1-2
Section 2 Hardware	2-1
2.1 Unpacking and Inspection	2-1
2.2 Included Items	2-1
Section 3 Transmitter Setup and Installation	3-1
3.1 Setup and Configuration	3-1
3.1.1 Connecting Your Device	3-1
3.1.2 Configure Your End Device	3-1
3.2 Mounting, Installation and Antenna Connection	3-7
3.2.1 Mounting	3-7
3.2.2 Installation	3-8
3.2.3 Antenna Connections	3-9
3.3 Input Connections	3-9
3.4 Battery Installation/Replacement	3-10
Section 4 System Operation	4-1
4.1 Introduction	4-1
4.2 RF Communication Basics	4-1
4.3 Basic System Overview	4-1
4.4 Transmitter Operation	4-2
4.4.1 Button Operations	4-2
4.1.2 Indicator Lights	4-2
4.5 Environment/ Operating Conditions	4-3
4.5.1 Environment	4-3
4.5.2 Ambient Temperature Readings	4-3
4.5.3 Operating Conditions	4-3
4.6 Determining and Maximizing Range	4-4
4.6.1 Operation in Buildings	4-5
4.6.2 Building Materials	4-5
4.6.3 Penetration Angle of Radio Waves Through Walls	4-5
4.7 Antenna Basics	4-6
4.7.1 Antenna Basica	4-6
4.8 Antenna Placement	4-6
4.8.1 Horizontal Antenna Placement	4-7
4.8.2 Vertical Antenna Placement	4-7
4.9 Factory Preset Values	4-8
4.10 Transmit Rate vs. Battery Life	4-8
Section 5 Troubleshooting	5-1
5.1 Transmitter Troubleshooting	5-1
5.2 Receiver Troubleshooting	5-1



Table of Contents continued

Section 6 Service and Calibration 6-1
 6.1 Calibration 6-1
 6.2 Service 6-1

Section 7 Specifications 7-1
 7.1 Transmitter Specifications 7-1

Section 8 Approvals & Regulatory Compliance 8-1
 8.1 FCC (Domestic Use: USA & Canada) 8-1

List of Figures

Section	Figure	Description	Page
1.2	1-1	IEC Symbols	1-1
1.3	1-2	Transmitter Rear Label	1-2
1.3	1-3	Transmitter Top Label	1-2
1.5	1-4	System Components	1-3
3.1.1	3-1	USB Cable	3-1
3.1.2	3-2	Transmitter Setup Mode	3-3
3.1.2	3-3	Software - Launch Setup Utility Program Screen ..	3-3
3.1.2	3-4	Software - Welcome Screen	3-4
3.1.2	3-5	Software - Connect To Transmitter Screen	3-4
3.1.2	3-6	Software - Setup The End Device Screen	3-5
3.1.2	3-7	Software - Establish A Link Screen	3-5
3.1.2	3-8	Software - Choose Options Screen	3-6
3.1.2	3-9	Software - Send Settings To End Device Screen ..	3-7
3.2	3-10	Mounting Dimensions	3-7
3.2	3-11	Fresnel Zone	3-8
3.3	3-12	Input Connections	3-9
3.4	3-13	Battery Installation/Replacement	3-10
4.3	4-1	Basic System Overview	4-1
4.4.1	4-2	UWXL Industrial Wireless Transmitter Button Options	4-2
4.6	4-3	Determining Maximum Range	4-4
4.6.2	4-4	Operation In Buildings Table	4-5
4.8.1	4-5	Horizontal Antenna Placement	4-7
4.8.2	4-6	Vertical Antenna Placement	4-7
4.10	4-7	Transmit Rate vs. Battery Life Table	4-8

Section 1 - Introduction

Please read this manual completely before installing and operating your wireless End Device and receiver system. It's important read and follow all notes, cautions, warnings and safety precautions before operating this End Device. "End Device" refers to your transmitter unit.

1.1 Precautions

- This device is not designed for use in any medical or nuclear applications.
- Do not operate this device in flammable or explosive environments.
- Never operate with a power source other than the one recommended in this manual.
- This device has been designed for dry, moisture free indoor applications only.
- Do not operate this device outside of the recommended use outlined in this manual.
- No co-location with other radio transmitters is allowed. By definition, co-location is when another radio device or it's antenna is located within 20 cm of your End Device and can transmit simultaneously with your End Device.
- Never install wireless End Devices within 20 cm or less from each other.
- Never install and/or operate your End Device closer than 20 cm to nearby persons.
- Never use your End Device as a portable device. Your unit has been designed to be operated in a permanent installation only.

NOTE:

There are no user serviceable parts inside your device. Attempting to repair or service your unit may void your warranty.

1.2 Safety Warnings and IEC Symbols

This device is marked with international safety and hazard symbols in accordance with IEC standards. It is important to read and follow all precautions and instructions in this manual before operating or commissioning this device as it contains important information relating to safety and EMC. Failure to follow all safety precautions may result in injury and or damage to your device. Use of this device in a manner not specified will void your warranty

IEC symbols**Description**

Caution, refer to accompanying documentation

EU's Waste Electrical and Electronic Equipment Compliance

Figure 1-1. IEC Symbols

1.3 Product Labeling

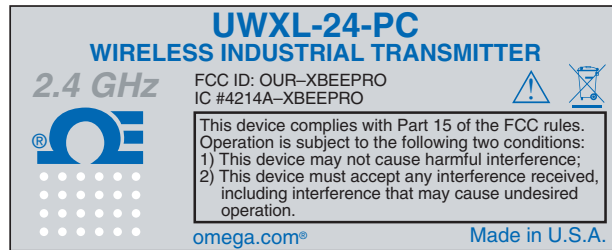


Figure 1-2. Transmitter Rear Label

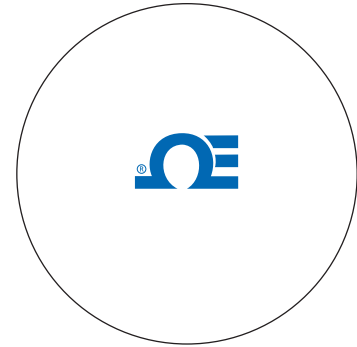


Figure 1-3. Transmitter Top Label

1.4 Statement on FCC

1.4.1 FCC Marking

FCC ID: OUR-XBEEPRO IC #4214A-XBEEPRO

This device complies with Part 15 of the FCC rules. Operation is subject to the following two conditions: 1.) This device may not cause harmful interference. 2.) This device must accept any interference received, including interference that may cause undesired operation.

1.5 General Description and System Components

1.5.1 General Description

The UWXL Series Long Distance Industrial Wireless Transmitters are stand-alone, rugged, battery powered, wireless transmitters that send their measurements to a host receiver up to 450 m (1500') line of sight (LOS) away. The UWXL transmitters are designed for a variety of applications, including temperature (RTD or thermocouple), infrared temperature, relative humidity, process transducers with standard voltage or current outputs, flow (pulsed frequency) as well as pH measurement. When used with host receiver model UWTC-REC1, data from up to 48 wireless end devices can be received and displayed simultaneously. Each receiver includes free software that converts your PC into a strip chart recorder or data logger allowing readings to be saved and later printed or exported to a spread sheet file.

The UWXL-24-PC Wireless Process Voltage and Current Input Transmitter features a stand-alone, compact, battery powered NEMA design that transmits measurements back to a host receiver up to 90 m (300') away. When activated the wireless transmitter will transmit readings continuously at preset time interval that was programmed by the user during the initial setup. Each unit measures and transmits: Process Voltage or Current Readings, RF Signal Strength and Battery Condition to the receiver and is displayed on your PC screen in real time using the provided software.

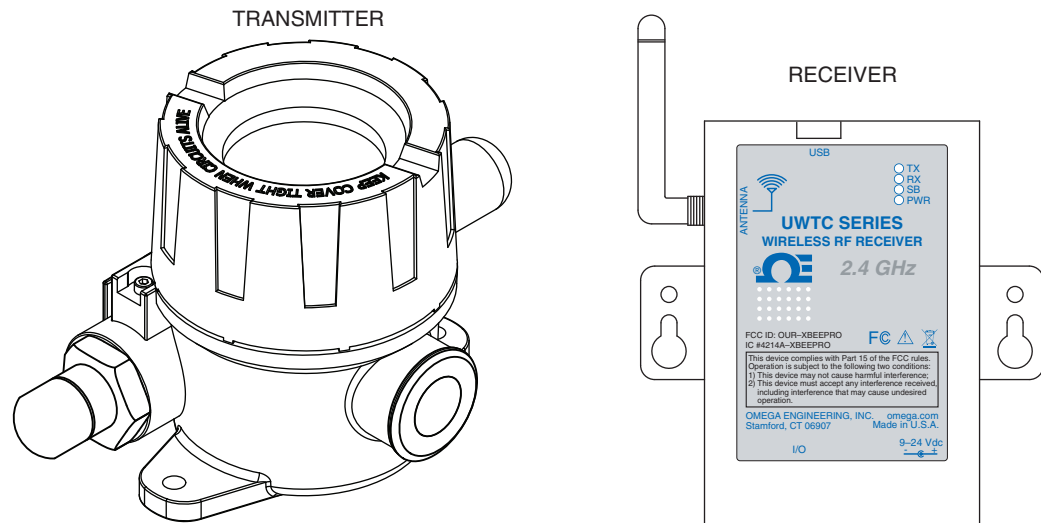


Figure 1-4. System Components

Section 2 – Hardware

It is important that you read this manual completely and follow all safety precautions before operating this instrument.

2.1 Package Inspection

Remove the packing list and verify that you have received all your equipment. If you have any questions about the shipment, please call our Customer Service Department at 1-800-622-2378 or 203-359-1660. We can also be reached on the Internet at www.omega.com, e-mail: cservice@omega.com. When you receive the shipment, inspect the container and equipment for any signs of damage. Note any evidence of rough handling in transit. Immediately report any damage to the shipping agent.

NOTE:

The carrier will not honor any damage claims unless all shipping material is saved for inspection. After examining and removing contents, save packing material and carton in the event reshipment is necessary.

2.2 Included Items

The following items are supplied in the box.

- 1 UWXL-24-PC Transmitter
- 1 User's Guide
- 1 Battery

Section 3 – Setup & Installation

3.1 Setup and Configuration

3.1.1 Connecting Your Device

Connect the USB cable to your transmitter unit and also to an available USB port on your computer. See figure below. The USB cable is provided in the box with your receiver unit. The same cable is used for programming your transmitter and for connecting your receiver.



Figure 3-1. USB Cable

3.1.2 Configure Your End Device

Now that you have connected your USB cable to your PC and transmitter, you will complete the following steps to configure your End Device before placing the unit into operation. You will be using the configuration software utility that you installed onto your PC when you set up your receiver. If you have not installed the configuration software utility you should do so now. During this procedure you will be setting the following parameters in your transmitter.

Transmitter Options:

Connector Address

This sets a unique address number into your transmitter. Later, when you set up your measurement software you will again set channel numbers to receive readings from the corresponding unit(s). Each end device must be given a different address for your system to operate correctly

NOTE:

If you will be using more than one receiver unit in your area it is important to set the transmitter address numbers to be a corresponding number in your TC-Central software.

Example

For the first receiver:

Set the addresses on your transmitters to 101, 102, 103, 104, etc.

Then set the channels in your TC-Central user software to match.

For the second receiver:

Set the addresses on your transmitters to 201, 202, 203, 204, etc.

Then set the channels in your TC-Central user software to match.

This numbering scheme can be expanded to match the number of receivers you are using.

Sample Rate

This will program your End Device to transmit 1 data reading to your receiver at a specified time interval. Available settings are 2, 3, 5, 15, 30, 45, 60, 75 or 90 seconds

NOTE:

The sample rate you set will have the most direct effect on the life of the battery in your End Device. It is recommended that you set the longest sample time that your application can live with to extend time between battery replacements. See Section 4 for more information on battery life.

RF Network Settings:

RF Channel

This setting determines the operating channel on which RF connections are made between the transmitter and receiver. The transmitter must be set to the same channel as the receiver in order for them to communicate.

Network ID

This sets the ID of the Network that the transmitter will be joining. It must match the setting of the receiver in order for them to communicate.

Receiver Address

This sets the destination address for RF packets sent by the transmitter. It must match the address of the receiver in order for them to communicate.

NOTE:

It is possible to have multiple RF networks operating in the same vicinity. Each network must have at least one unique RF Network Setting in order to differentiate the networks.

STEP 1. Enter the "SETUP" mode.

To place your transmitter into the SETUP mode for programming follow this procedure.

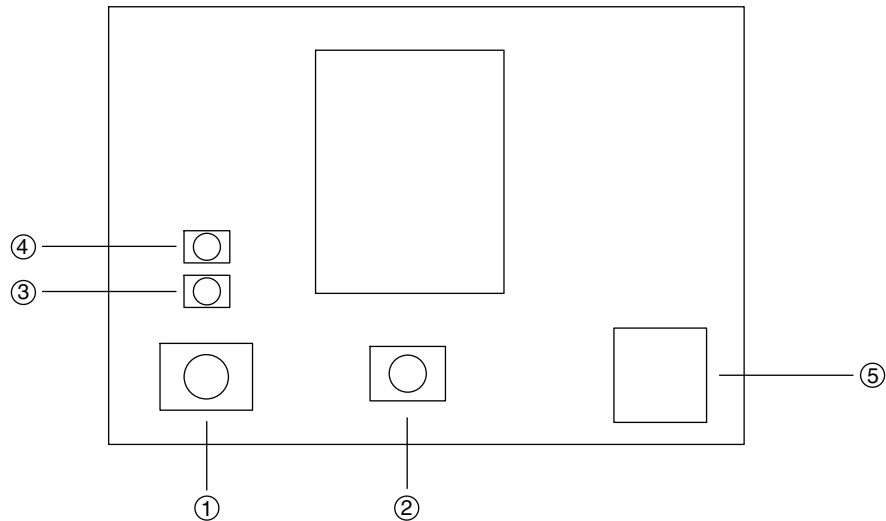


Figure 3-2. Transmitter Setup Mode

- (1) On/Off Button
- (2) Setup Button
- (3) Battery Indicator
- (4) Status Indicator,
- (5) USB Connector

Press and hold the ON/OFF button. While the ON/OFF button is being held, press the SETUP button one time and then release the ON/OFF button. The green (TX) indicator on the front of your device should be blinking at a steady rate. This indicates your End Device is ready to run the configuration utility software

STEP 2. Launch Setup Utility Program.

To launch the End Device setup utility program on your PC begin by accessing the "Programs" list under your "Start Menu".

Scroll through the list of to find the Omega TC-Central folder, then select the End Device Configuration Program.

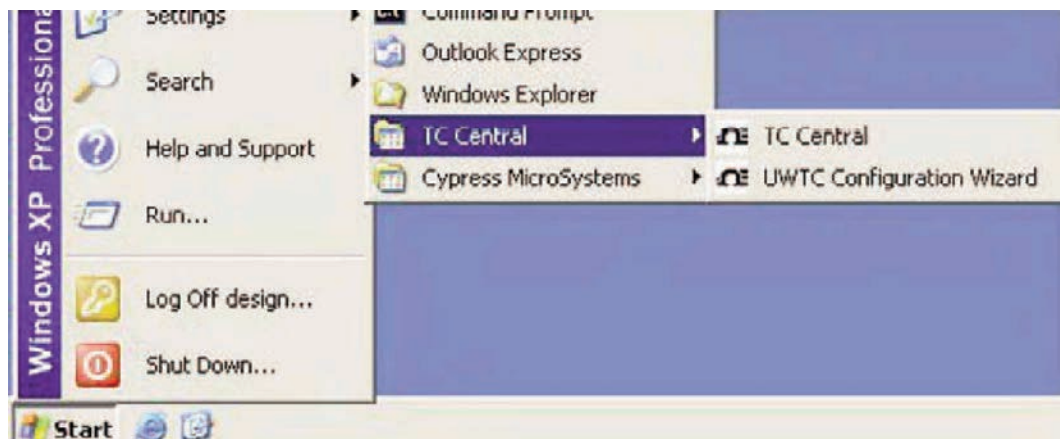


Figure 3-3. Software - Launch Setup Utility Program Screen

STEP 3. Programming your settings into your End Device

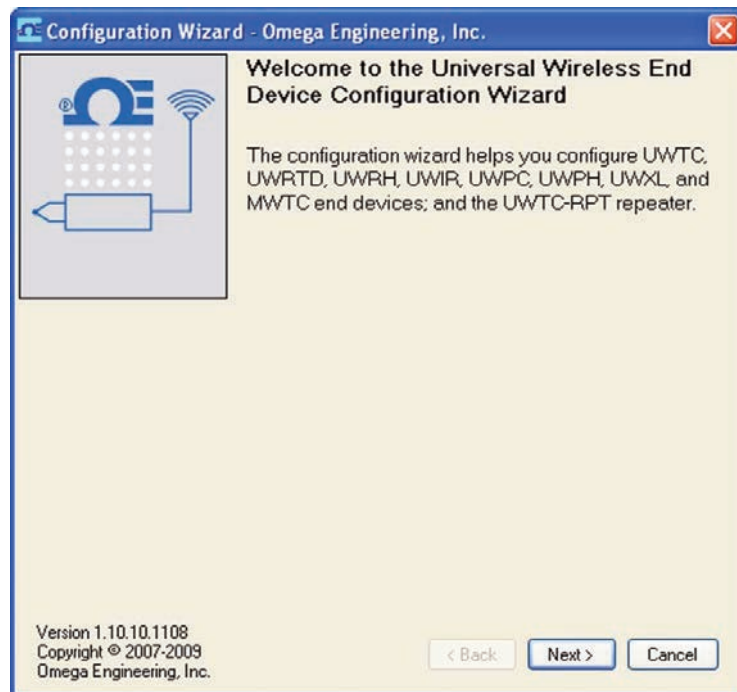


Figure 3-4. Software - Welcome Screen

After starting the setup utility program this will be the first screen you will see. Click the "Next >" button to proceed and continue setting up your End Device. Each screen will provide instruction details on how to proceed.



Figure 3-5. Software - Connect To End Device Screen

If you have not already connected your End Device to a USB port on your PC you must do this now before continuing. After your unit has been connected, click the Next > button to proceed and continue setting up your unit.

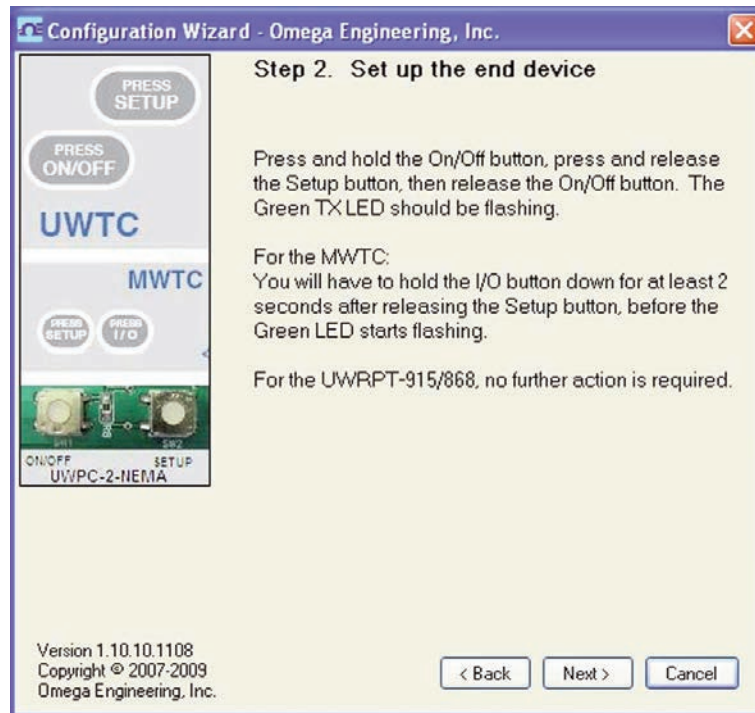


Figure 3-6. Software - Setup The End Device Screen

If you have not already placed your End Device into the SETUP mode you should do this now before continuing. After your unit has been placed into the SETUP mode, click the Next > button to proceed and continue setting up your unit.

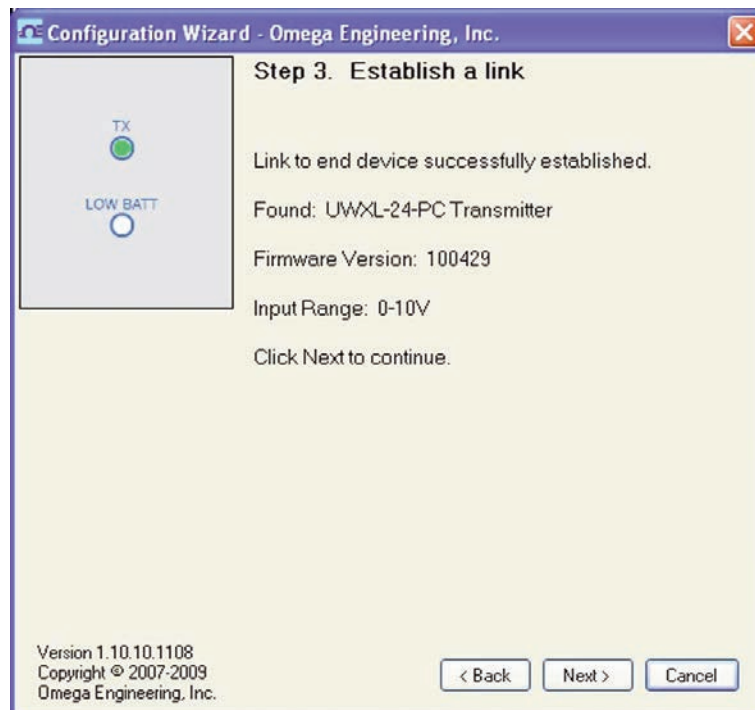


Figure 3-7. Software - Establish A Link Screen

After successful communication between your connector/transmitter has been established you can click the Next > button to proceed and continue setting up your connector/transmitter. If you did not receive a confirmation of proper communication you should click the <Back button to try connecting again.

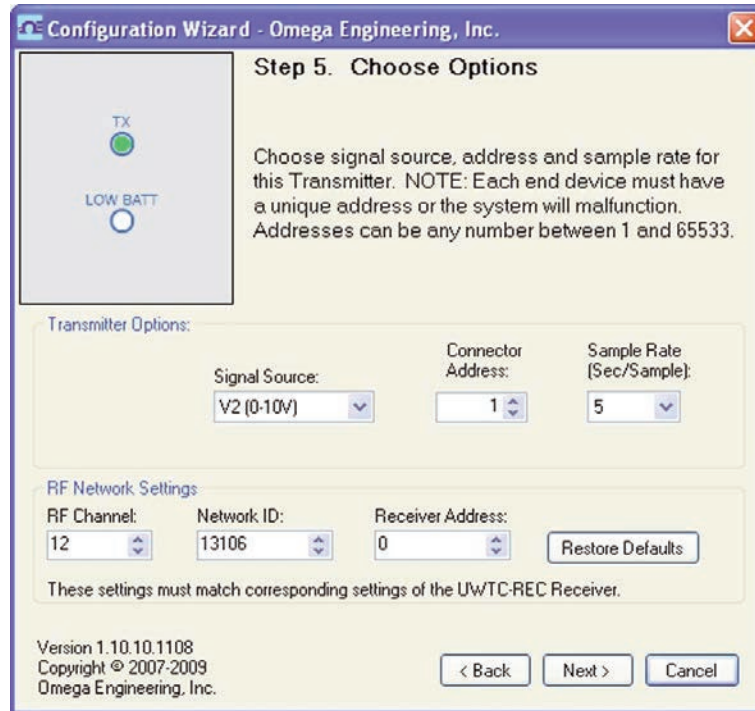


Figure 3-8. Software - Choose Options Screen

From this screen you will select the main operating settings for your end device.

NOTE:

Each end device must have a different address number for proper operation). After making your selections click the Next > button to proceed and program your settings into your unit.

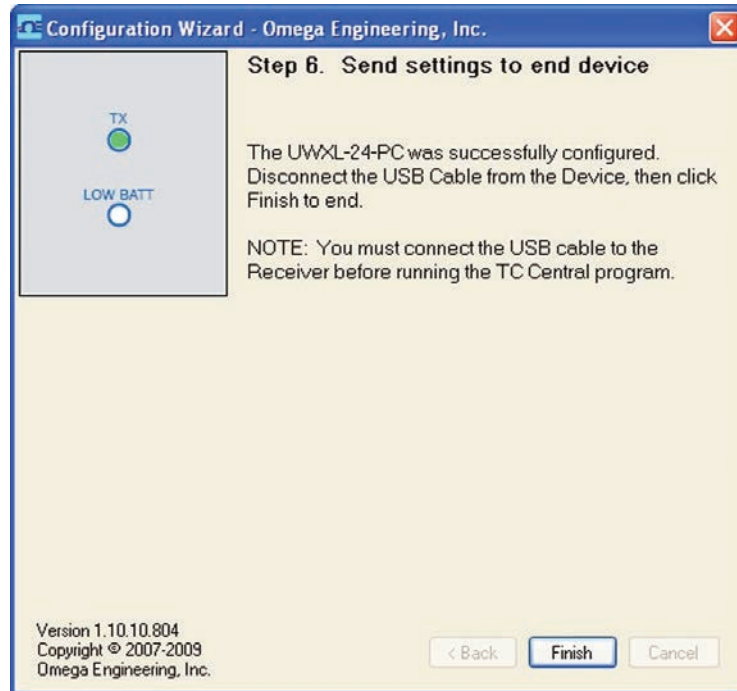


Figure 3-9. Software - Send Settings To End Device Screen

Congratulations! You have successfully programmed your end device. After your unit has been programmed click the Finish button to close the utility program.

3.2 Mounting, Installation and Antenna Connection

3.2.1 Mounting

The diagram below shows dimensions of the transmitter housing for mounting.

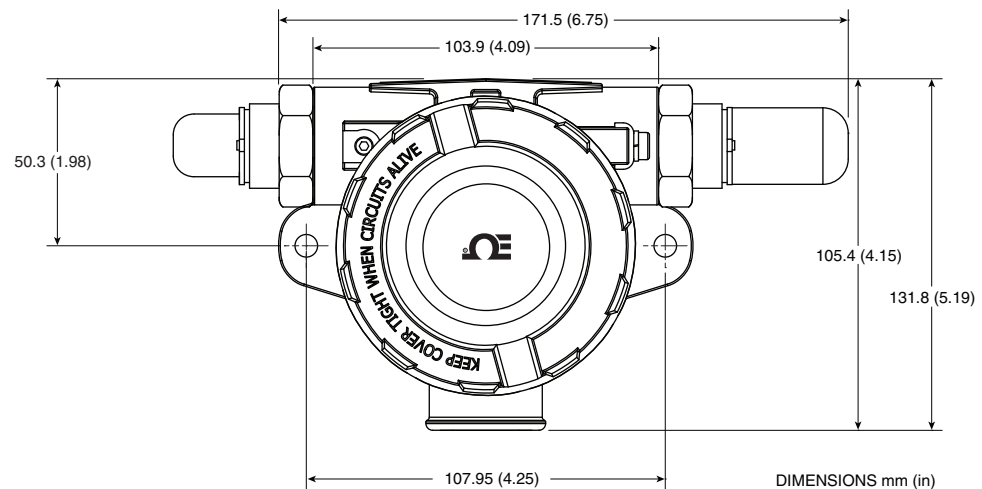


Figure 3-10. Mounting Dimensions

When mounting your end device, care should be taken to make sure it is as far away from any metal objects. If nearby metal gets too close to your unit, it has the potential to interfere with the way the unit radiates and may cause signal loss or possibly even the inability to communicate at all with your receiver.

3.2.2 Installation

When installing your End Device it is important to position your device in such a way as to optimize the antenna location within what's known as the "Fresnel Zone".

The Fresnel Zone can be thought of as a football-shaped invisible tunnel between two locations that provides a path for RF signals between your End Device and your receiver.

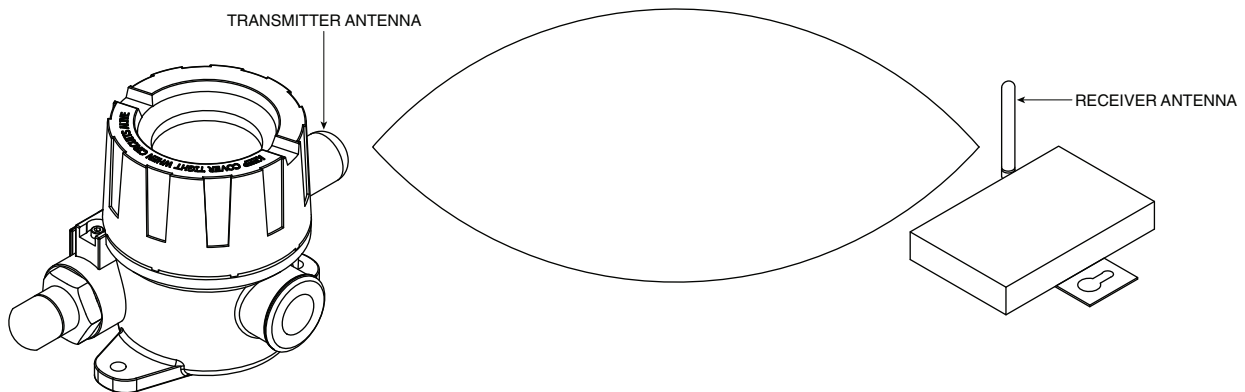


Figure 3-11. Fresnel Zone

In order to achieve maximum range, the football-shaped path in which radio waves travel must be free of all obstructions. Obstacles in the path (especially metal) will decrease the communication range between your End Device and receiver. Also, If the antennas are mounted just barely off the ground, over half of the Fresnel zone ends up being obstructed by the earth resulting in significant reduction in range. To avoid this problem, the antennas should be mounted high enough off of the ground so that the earth does not interfere with the central diameter of the Fresnel zone.

NOTE:

It is important to understand that the environment may change over time due to new equipment or machinery being installed, building construction, etc. If new obstacles exist between your End Device and receiver, the devices can be raised on one end or on both ends to hopefully clear the Fresnel Zone of obstructions.

NOTE:

No co-location with other radio transmitters is allowed. By definition, co-location is when another radio device or the device's antenna is located within 20 cm of your connector/transmitter and can transmit simultaneously with your unit.

NOTE:

Never install multiple End Devices within 20 cm or less from each other.

NOTE:

Never use your UWXL End Device as a portable device. Your unit has been designed to be operated in a permanent installation only.

3.2.3 Antenna Connections

Your End Device has been shipped to you with a standard antenna already attached. In some cases the user may wish to install a remote antenna to maximize transmission range to the receiver. In these instance the UWXL-RAK antenna kit can be used. The kit includes a direction antenna, 8" extension cable and a mounting bracket.

In some cases, a short RF cable may be used to connect an antenna to your device. Please note that RF extension cables will always add some loss to the transmitting signal strength. The longer the cable the more signal will be lost over that cable. Because of this the length of the cable should be kept as short as possible.

NOTE:

Use of any other antenna then what's supplied with your End Device will void all FCC and IC regulatory compliance.

Additional information on installation and system operation can be found in Section 6.

3.3 Input Connection

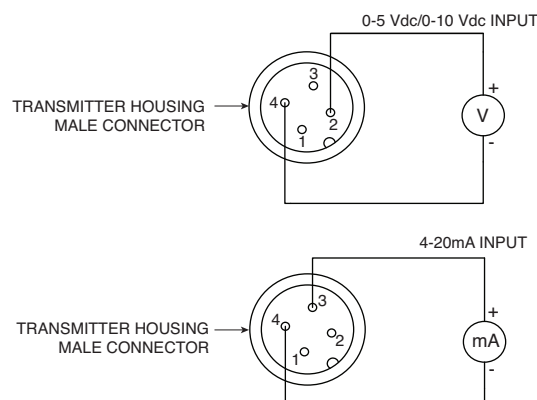


Figure 3-12. Input Connections

3.4 Battery Installation/Replacement

Your UWXL transmitter is equipped with a “C” size lithium power cell assembly, Omega Part Number: UWTC-BATT-C. To install a replacement battery assembly follow the steps below:

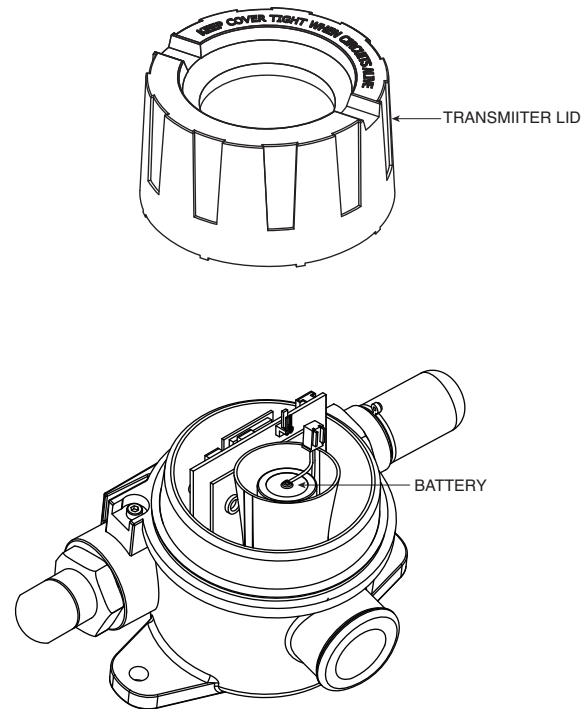


Figure 3-13. Battery Installation/ Replacement

- A. Remove the two screws that secure the main circuit board assembly.
- B. Lift the circuit board just high enough to allow you to unplug the connector that attaches the battery assembly to the bottom of the circuit board.
- C. Remove the old power cell.
- D. Install your new battery assembly into the housing in the same position as the old battery was located.
- E. Connect the battery assembly connector to the mating connector on the bottom of the circuit board.
- F. Install the circuit board back into the housing and secure with the two screws you removed in step one.
- G. Installation complete.

Section 4 – System Operation

4.1 Introduction

Compared to wired process voltage/current input systems, wireless process voltage/current input systems provide much simpler installation. Based on the physical principle of the propagation of radio waves, certain basic conditions should be observed. The following simple recommendations are provided to insure proper installation and correct operation of your wireless system.

4.2 RF Communication Basics

The Model UWXL-24-PC sends wireless transmissions to a receiver. The receiver checks the incoming data for accuracy and processes this data for use by the measurement software on your PC. Radio signals are electromagnetic waves, hence the signal becomes weaker the further it travels. While radio waves can penetrate some solid materials like a wall, they are dampened more than when a direct line-of-sight between the transmitting and receiving antenna exist.

4.3 Basic System Overview

The UWXL wireless process voltage/current input system is comprised of only two main components; a signal conditioner with a built-in battery powered 2.4GHz radio transmitter, and a USB powered 2.4GHz radio receiver.

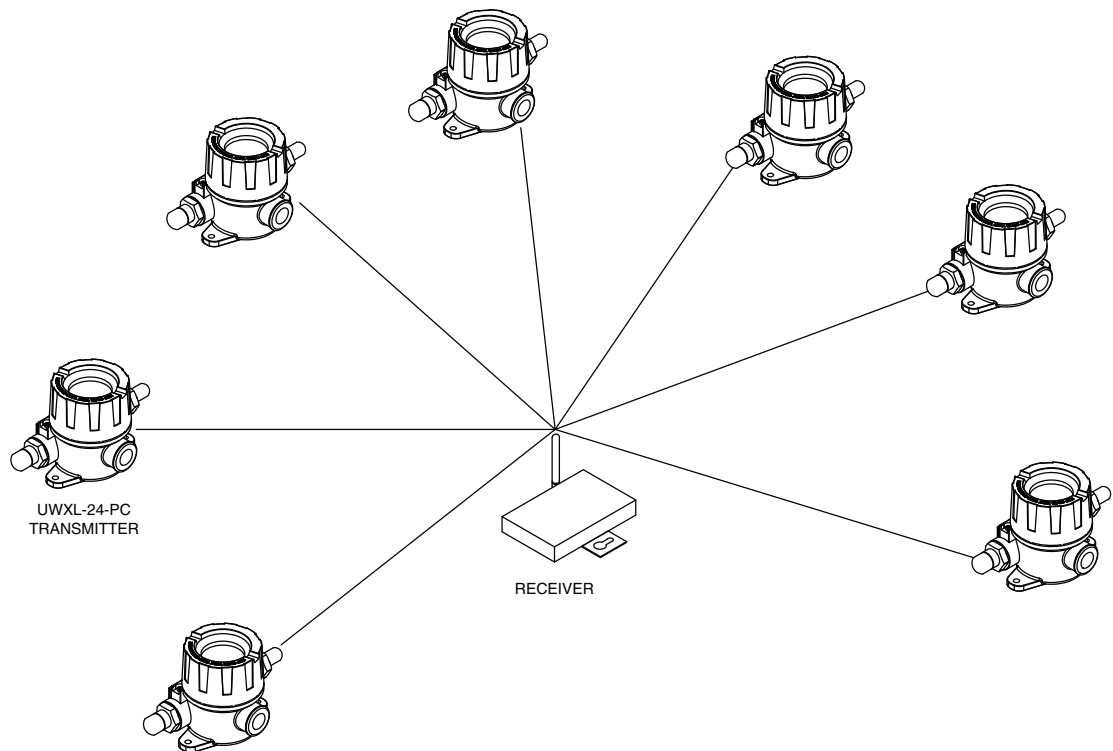


Figure 4-1. Basic System Overview

NOTE:

Up to 48 end devices can be used with one receiver.

4.4 Connector/Transmitter Operation

4.4.1 Button Operation

(1.) ON / OFF

The ON/OFF button on the main circuit board of your transmitter is used to turn your unit on or off.

(2.) SETUP

The SETUP button on the main circuit board of your transmitter is only used during the setup and configuration of your unit. See Section 3.1.2 for more information

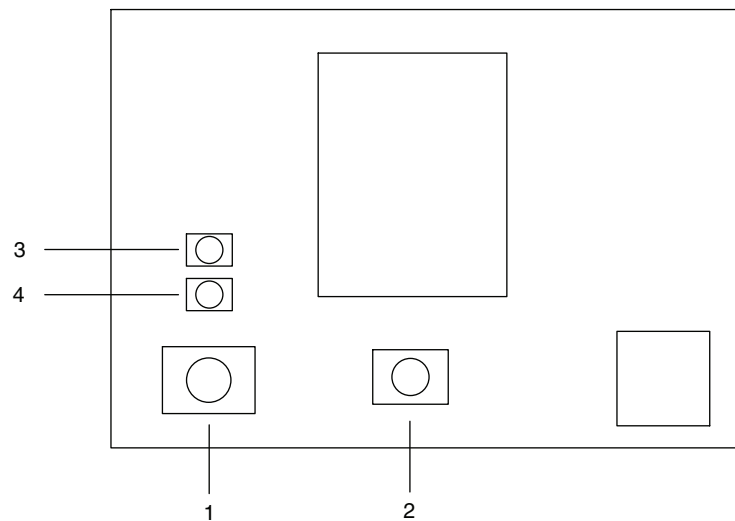


Figure 4-2. UWXL Industrial Wireless Transmitter Button Options

- (1) "SETUP" Button
- (2) "ON/OFF" Button
- (3) Transmit Indicator
- (4) Battery Indicator

4.4.2 Indicator Lights

1) Transmit (TX) Green Indicator Light

The green indicator light marked "TX" on the front of the connector/transmitter will blink every time the unit sends data to the receiving unit. Example; If you selected a 5 sec sample rate the green TX led will blink one time every 5 seconds.

2) Low Battery (Low Bat) Red Indicator Light

The red indicator light marked "Low Bat" on the front of the transmitter will turn on when the battery reaches a level at or below the power level required for normal operation. When this indicator turns on it's time to install a fresh battery in your unit. For information on battery life see Section 6.11.

4.5 Environment/Conditions

4.5.1 Environment

Omega's wireless end devices and receiver units have been designed to be fixed mounted and operated in both indoor and outdoor environments. Care should be taken to prevent the components of your wireless system from being exposed to toxic chemicals and extreme cold or hot temperatures that are outside the specifications listed in this manual.

4.5.2 Ambient Temperature Readings

The ambient temperature reading displayed on your screen when running the TC-Central program, is the actual ambient temperature that your transmitter is being exposed to. This reading is only provided as reference and to aid you in proper installation of your unit. The ambient temperature reading will blink and change to RED digits to alert you that the temperature has exceed the maximum recommended safe operating limit for your transmitter. You should not rely on this feature as sole protection. Additional protection should be taken the user to protect your unit from extreme conditions.

NOTE:

Operating your transmitter outside the specified ambient conditions listed in Section 9 of this manual may cause your unit to malfunction and stop working correctly.

4.5.3 Operating Conditions

The following is a list of basic good practice you should apply when operating your wireless system.

- Never operate your wireless device or receiver outside the recommended environmental limits specified in this manual.
- Never operate your wireless end device or receiver in flammable or explosive environments.
- Never use your wireless end device or receiver in medical, nuclear or other dangerous applications where an interruption of readings can cause damage or harm.
- Never operate your end device or receiver with any other battery or power source than what's specified in this manual or on the battery compartment label.
- No co-location with other radio transmitters is allowed. By definition, co-location is when another radio device or it's antenna is located within 20 cm of your end device and can transmit simultaneously with your end device.
- Never install end devices within 20 cm or less from each other.
- Never use your end device as a portable device. Your unit has been designed to be operated in a permanent installation.
- Never install and/or operate your end device closer than 20 cm to nearby persons.
- Never operate your end device with any other antenna than what is supplied or listed here in this manual for approved use.

4.6 Determining and Maximizing Range

NOTE:

The available maximum range specified for the wireless Series system in this manual is only achievable under optimum installation conditions. Mounting height, obstructions in your "Fresnel Zone" and ambient conditions can cause a decrease in signal strength resulting in a shorter range between your transmitter and receiver unit.

The following recommendations will help to improve the range of your wireless system.

Position your receiver in a central location

When multiple transmitters are in operation, position your receiver unit in a central space if possible in equal distance to each connector transmitter.

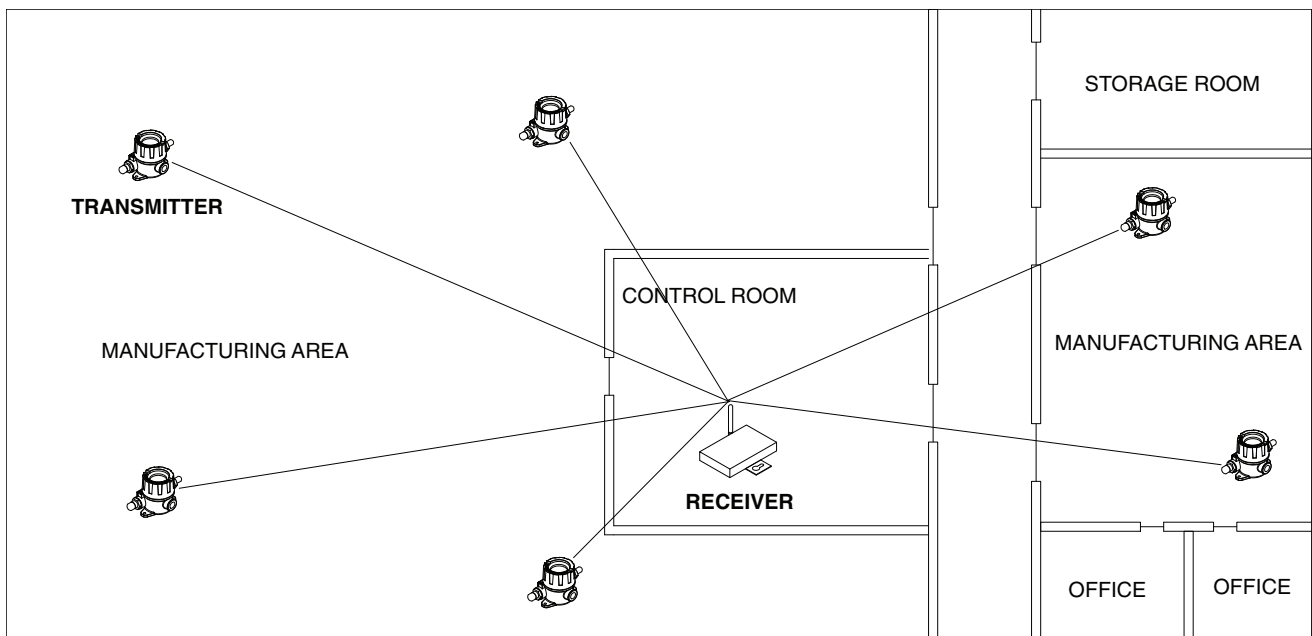


Figure 4-3. Determining Maximum Range

Test your system before permanent mounting

Before permanently mounting your transmitters in your application try moving the devices to different locations and mounting angles to determine what installation achieves the best signal strength.

Move your system components higher off the floor and away from exterior walls

Avoid installing your system components too close to the floor or near your building's exterior walls. The closer your transmitter and receiver unit are to the floor or exterior walls, the greater the interference and loss of signal strength will be.

Maintain a line of sight (LOS) between antennas

Maintaining a line of sight between your transmitter and receiver unit will produce greatly improved signal strength over a system where the antenna's in your system have obstacles blocking them.

Maintain a constant ambient temperature environment

Maintaining a constant ambient temperature environment is important to achieving maximum signal strength. Exposing your system components to extreme hot or cold temperatures, or sudden changes in ambient conditions will have an effect on the performance of your system.

4.6.1 Operation in Buildings

Your transmitter sends wireless data transmissions to a receiver connected to your PC. Radio signals are electromagnetic waves. A radio signal becomes weaker the further it travels. Range is decreased by different types of materials found in the direction of the signals propagation. Radio waves can penetrate most types of wall materials, but they are dampened more than they would be by a direct line-of-sight installation.

4.6.2 Building Materials

Material Type	Possible Signal Reduction
Wood, Plaster, Sheetrock, Uncoated Glass w/o Metal, Fiberglass	0 to 10%
Brick, Pressboard	5 to 35%
Reinforced Concrete	10 to 90%
Metal Walls, Metal Doors, Elevators, Metal Stair Cases, Metal Piping, Metal Mesh, Metal Screening	90 to 100%

Figure 4-4 Operation In Buildings

Avoid dampening materials by repositioning the transmitting and/or receiver.

4.6.3. Penetration Angle of Radio Waves Through Walls

The angle at which the transmitted radio signal hits a wall is very important and also has a big effect on maximizing range. Signals between your transmitter should be transmitted as directly as possible.

4.7 Antenna Basics

4.7.1 Antenna Basics

By definition, an antenna is a device used to transform an RF signal, traveling on a conductor, into an electromagnetic wave in free space. Antennas demonstrate a property known as reciprocity, this means that an antenna will always maintain the same characteristics regardless if it is used to transmit or receive. Most antennas are resonant devices, which means they operate efficiently over a relatively very narrow frequency band. An antenna must be tuned to the same frequency band of the radio system to which it is connected, otherwise the reception and the transmission will be impaired. The antennas in your wireless transmitter system have been tuned to operate in the 2.4 GHz band.

NOTE:

In some cases, a short RF cable may be used to connect an antenna to your device. Please note that RF extension cables will always add some loss to the transmitting signal strength. The longer the cable the more signal will be lost over that cable. Because of this, the length of the cable should be kept as short as possible.

4.8 Antenna Placement

Proper antenna installation is important and will allow you to achieve maximum performance and range between your transmitter and receiver unit.

NOTE:

Your transmitter should not be installed on the same side of the wall as the receiver. If mounted close to each other on the same wall, the radio waves are likely to be subject to interfering dispersions or reflections. The best positioning is to have the transmitter installed on the opposite or connecting wall to the receiver.

4.8.1 Horizontal Antenna Placement

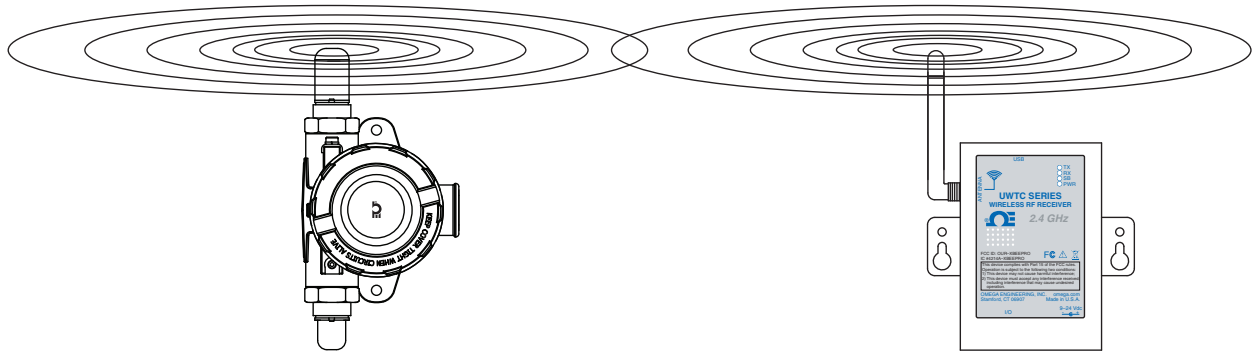


Figure 4-5. Horizontal Antenna Placement

If your transmitter is mounted in a horizontal position in your application you should mount your receiving so that the same polarization is achieved with the receiving antenna. As shown in the “Horizontal” example above.

4.8.2 Vertical Antenna Placement

If your transmitter is mounted in a vertical position in your application you should mount your receiving so that the same polarization is achieved with the receiving antenna. As shown in the “Vertical” example Fig 4-6.

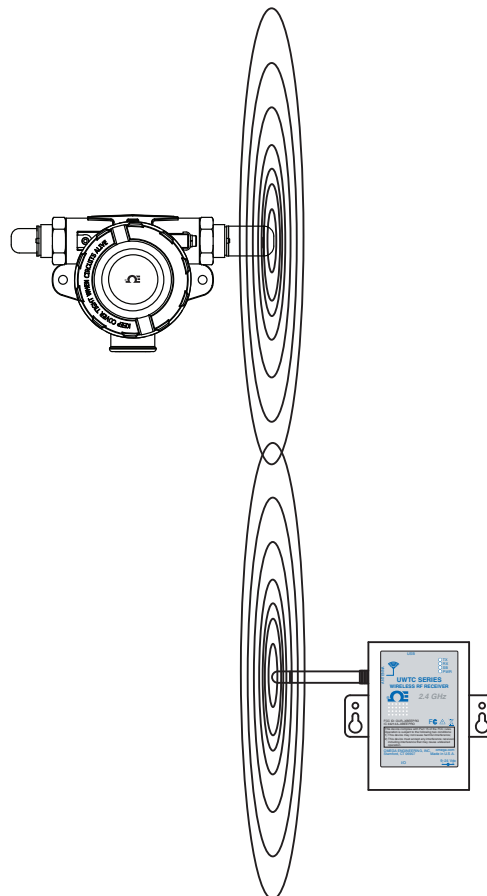


Figure 4-6. Vertical Antenna Placemen

4.9 Factory Preset Values

Your transmitter has been factory programmed for the following default operation; Channel Number: 1, Transmit Rate: 1 sample/5 sec

4.10 Transmit Rate vs. Battery Life

Many factors such as ambient temperature and transmission rate can have a major affect on the life of the battery used in your transmitter. The transmit rate is the biggest factor in the life of your battery. The longer the transmit rate you set, the longer the battery in your device will last. The table below give some estimates on how long the battery should last for the transmit rate you selected when you setup your transmitters if used under normal operating conditions.

For Model UWXL-24-PC

Transmit Time	Estimated Battery Life
1 Sample/2 Seconds	102 days
1 Sample/3 Seconds	151 days
1 Sample/4 Seconds	198 days
1 Sample/5 Seconds	245 days
1 Sample/10 Seconds	461 days
1 Sample/15 Seconds	653 days
1 Sample/30 Seconds	1121 days
1 Sample/45 Seconds	1472 days
1 Sample/60 Seconds	1745 days
1 Sample/75 Seconds	1963 days

Figure 4-7 Transmit Rate vs. Battery Life Table

Section 5 – Troubleshooting

5.1 Transmitter Troubleshooting

Problem

1. Unit will not enter “Setup” mode

Solution

- a. Check USB cable connection
- b. Contact Customer Service

2. Configuration Utility will not connect

- a. Check USB cable connection to device being programmed
- b. Confirm you are in the “SETUP” mode. See Section 3
- c. Contact Customer Service

5.2 Receiver Troubleshooting

Problem

1. Unit will not turn on

Solution

- a. Check power cord connections
- b. Unit requires service, contact Customer Service

Section 6 – Service & Calibration

6.1 Calibration

Your UWXL-24-PC Wireless Process Transmitter has been built and factory calibrated to meet or exceed the specifications listed here in the manual. Information is provided below on how to have your unit serviced.

6.2 Service

If any of your wireless system components require service, please call our Customer Service Department at 1-800-622-2378 or 203-359-1660. They will assist you in arranging the return of your device. We can also be reached on the Internet at www.omega.com, e-mail: cservice@omega.com

Section 7 – Specifications

Computer Interface:	USB
Transmit Sample Rate:	Programmable from 2 sec to 120 sec
Radio Frequency (RF) Transceiver Carrier:	ISM 2.4 GHz, direct sequence spread spectrum, (2.450 to 2.490 GHz - 12 RF channels)
RF Output Power:	18 dBm (63 mW)
Range of RF Link:	Up to 450 m (1500 ft) outdoor line of sight; up to 90 m (300 ft) indoor/urban
RF Data Packet Standard:	IEEE 802.15.4, open communication architecture
Power:	One 3.6V, Lithium C Cell (included)
Battery Life (Typical):	3 years; at 1 sample/minute reading rate @ 25°C
Input:	0 to 1 Vdc, 0 to 5 Vdc, 0 to 10 Vdc, 0 to 20 A, 4 to 20 mA
Accuracy:	±0.1% FS @ 25°C
Resolution:	12 to 15 bit
Connection:	M12
Dimensions:	See Section 3.2

Section 8 – Approvals, Regulatory Compliance

NOTE:

All approvals outlined in this manual are based on testing that was done with antennas that are supplied with your Wireless Series System Components. Removing and or installing a different antenna will void the product compliance demonstrated in these documents.

8.1 FCC (Domestic Use)

For United States: FCC ID: OUR-XBEEPRO

For Canada: IC #4214A-XBEEPRO

This device complies with Part 15 of the FCC rules. Operation is subject to the following two conditions: 1.) This device may not cause harmful interference. 2.) This device must accept any interference received, including interference that may cause undesired operation.

WARNING:

To satisfy FCC RF exposure requirements for mobile transmitting devices, a separation distance of 20 cm or more should be maintained between the antenna of this device and persons during device operation. To ensure compliance, operations at closer than this distance is not recommended. The antenna used for this transmitter must not be co-located in conjunction with any other antenna or transmitter.



WARRANTY/DISCLAIMER

OMEGA ENGINEERING, INC. warrants this unit to be free of defects in materials and workmanship for a period of **13 months** from date of purchase. OMEGA's WARRANTY adds an additional one (1) month grace period to the normal **one (1) year product warranty** to cover handling and shipping time. This ensures that OMEGA's customers receive maximum coverage on each product.

If the unit malfunctions, it must be returned to the factory for evaluation. OMEGA's Customer Service Department will issue an Authorized Return (AR) number immediately upon phone or written request. Upon examination by OMEGA, if the unit is found to be defective, it will be repaired or replaced at no charge. OMEGA's WARRANTY does not apply to defects resulting from any action of the purchaser, including but not limited to mishandling, improper interfacing, operation outside of design limits, improper repair, or unauthorized modification. This WARRANTY is VOID if the unit shows evidence of having been tampered with or shows evidence of having been damaged as a result of excessive corrosion; or current, heat, moisture or vibration; improper specification; misapplication; misuse or other operating conditions outside of OMEGA's control. Components in which wear is not warranted, include but are not limited to contact points, fuses, and triacs.

OMEGA is pleased to offer suggestions on the use of its various products. However, OMEGA neither assumes responsibility for any omissions or errors nor assumes liability for any damages that result from the use of its products in accordance with information provided by OMEGA, either verbal or written. OMEGA warrants only that the parts manufactured by the company will be as specified and free of defects. OMEGA MAKES NO OTHER WARRANTIES OR REPRESENTATIONS OF ANY KIND WHATSOEVER, EXPRESSED OR IMPLIED, EXCEPT THAT OF TITLE, AND ALL IMPLIED WARRANTIES INCLUDING ANY WARRANTY OF MERCHANTABILITY AND FITNESS FOR A PARTICULAR PURPOSE ARE HEREBY DISCLAIMED. LIMITATION OF LIABILITY: The remedies of purchaser set forth herein are exclusive, and the total liability of OMEGA with respect to this order, whether based on contract, warranty, negligence, indemnification, strict liability or otherwise, shall not exceed the purchase price of the component upon which liability is based. In no event shall OMEGA be liable for consequential, incidental or special damages.

CONDITIONS: Equipment sold by OMEGA is not intended to be used, nor shall it be used: (1) as a "Basic Component" under 10 CFR 21 (NRC), used in or with any nuclear installation or activity; or (2) in medical applications or used on humans. Should any Product(s) be used in or with any nuclear installation or activity, medical application, used on humans, or misused in any way, OMEGA assumes no responsibility as set forth in our basic WARRANTY/DISCLAIMER language, and, additionally, purchaser will indemnify OMEGA and hold OMEGA harmless from any liability or damage whatsoever arising out of the use of the Product(s) in such a manner.

RETURN REQUESTS/INQUIRIES

Direct all warranty and repair requests/inquiries to the OMEGA Customer Service Department. BEFORE RETURNING ANY PRODUCT(S) TO OMEGA, PURCHASER MUST OBTAIN AN AUTHORIZED RETURN (AR) NUMBER FROM OMEGA'S CUSTOMER SERVICE DEPARTMENT (IN ORDER TO AVOID PROCESSING DELAYS). The assigned AR number should then be marked on the outside of the return package and on any correspondence.

The purchaser is responsible for shipping charges, freight, insurance and proper packaging to prevent breakage in transit.

FOR **WARRANTY** RETURNS, please have the following information available BEFORE contacting OMEGA:

1. Purchase Order number under which the product was PURCHASED,
2. Model and serial number of the product under warranty, and
3. Repair instructions and/or specific problems relative to the product.

FOR **NON-WARRANTY** REPAIRS, consult OMEGA for current repair charges. Have the following information available BEFORE contacting OMEGA:

1. Purchase Order number to cover the COST of the repair,
2. Model and serial number of the product, and
3. Repair instructions and/or specific problems relative to the product.

OMEGA's policy is to make running changes, not model changes, whenever an improvement is possible. This affords our customers the latest in technology and engineering.

OMEGA is a registered trademark of OMEGA ENGINEERING, INC.

© Copyright 2012 OMEGA ENGINEERING, INC. All rights reserved. This document may not be copied, photocopied, reproduced, translated, or reduced to any electronic medium or machine-readable form, in whole or in part, without the prior written consent of OMEGA ENGINEERING, INC.

Where Do I Find Everything I Need for Process Measurement and Control?

OMEGA...Of Course!

Shop online at omega.comSM

TEMPERATURE

- ☑ Thermocouple, RTD & Thermistor Probes, Connectors, Panels & Assemblies
- ☑ Wire: Thermocouple, RTD & Thermistor
- ☑ Calibrators & Ice Point References
- ☑ Recorders, Controllers & Process Monitors
- ☑ Infrared Pyrometers

PRESSURE, STRAIN AND FORCE

- ☑ Transducers & Strain Gages
- ☑ Load Cells & Pressure Gages
- ☑ Displacement Transducers
- ☑ Instrumentation & Accessories

FLOW/LEVEL

- ☑ Rotameters, Gas Mass Flowmeters & Flow Computers
- ☑ Air Velocity Indicators
- ☑ Turbine/Paddlewheel Systems
- ☑ Totalizers & Batch Controllers

pH/CONDUCTIVITY

- ☑ pH Electrodes, Testers & Accessories
- ☑ Benchtop/Laboratory Meters
- ☑ Controllers, Calibrators, Simulators & Pumps
- ☑ Industrial pH & Conductivity Equipment

DATA ACQUISITION

- ☑ Data Acquisition & Engineering Software
- ☑ Communications-Based Acquisition Systems
- ☑ Plug-in Cards for Apple, IBM & Compatibles
- ☑ Data Logging Systems
- ☑ Recorders, Printers & Plotters

HEATERS

- ☑ Heating Cable
- ☑ Cartridge & Strip Heaters
- ☑ Immersion & Band Heaters
- ☑ Flexible Heaters
- ☑ Laboratory Heaters

ENVIRONMENTAL MONITORING AND CONTROL

- ☑ Metering & Control Instrumentation
- ☑ Refractometers
- ☑ Pumps & Tubing
- ☑ Air, Soil & Water Monitors
- ☑ Industrial Water & Wastewater Treatment
- ☑ pH, Conductivity & Dissolved Oxygen Instruments