

1 YEAR
WARRANTY

OMEGA CARE
Extended Warranty
Program



User's Guide



Shop online at

omega.com

an OMEGA

omega.com

e-mail: info@omega.com

*For latest product manuals:
omegamannual.info*

ISO 9001
CERTIFIED
CORPORATE QUALITY
STAMFORD, CT

ISO 9002
CERTIFIED
CORPORATE QUALITY
MANCHESTER, UK

DRF-FR FOR FREQUENCY INPUT DRF Series Signal Conditioners

omega.com®

—CEOMEGA®

OMEGAnet® On-Line Service
omega.com

Internet e-mail
info@omega.com

Servicing North America:

U.S.A.: ISO 9001 Certified
One Omega Drive, Box 4047
Stamford, CT 06907-0047
Tel: (203) 359-1660
FAX: (203) 359-7700
e-mail: info@omega.com

Canada:
976 Bergar
Laval (Quebec) H7L 5A1, Canada
Tel: (514) 856-6928
FAX: (514) 856-6886
e-mail: info@omega.ca

For immediate technical or application assistance:

U.S.A. and Canada:
Sales Service: 1-800-826-6342 / 1-800-TC-OMEGA®
Customer Service: 1-800-622-2378 / 1-800-622-BEST®
Engineering Service: 1-800-872-9436 / 1-800-USA-WHEN®
TELEX: 996404 EASYLINK: 62968934
CABLE: OMEGA

Mexico:
En Español: (001) 203-359-7803
FAX: (001) 203-359-7807
e-mail: espanol@omega.com
info@omega.com.mx

Servicing Europe:

Benelux:
Postbus 8034, 1180 LA Amstelveen
The Netherlands
Tel: +31 (0)20 3472121 FAX: +31 (0)20 6434643
Toll Free in Benelux: 0800 0993344
e-mail: sales@omegaeng.nl

Czech Republic:
Frystatska 184, 733 01 Karviná, Czech Republic
Tel: +420 (0)59 6311899
FAX: +420 (0)59 6311114
Toll Free: 0800-1-66342
e-mail: info@omegashop.cz

France:
11, rue Jacques Cartier
78280 Guyancourt, France
Tel: +33 (0)1 61 37 2900 FAX: +33 (0)1 30 57 5427
Toll Free in France: 0800 466 342
e-mail: sales@omega.fr

Germany/Austria:
Daimlerstrasse 26, D-75392
Deckenpfronn, Germany
Tel: +49 (0)7056 9398-0
FAX: +49 (0)7056 9398-29
Toll Free in Germany: 0800 639 7678
e-mail: info@omega.de

United Kingdom: ISO 9002 Certified
One Omega Drive
River Bend Technology Centre
Northbank, Irlam
Manchester M44 5BD
United Kingdom
Tel: +44 (0)161 777 6611
FAX: +44 (0)161 777 6622
Toll Free in United Kingdom:
0800-488-488
e-mail: sales@omega.co.uk

It is the policy of OMEGA Engineering, Inc. to comply with all worldwide safety and EMC/EMI regulations that apply. OMEGA is constantly pursuing certification of its products to the European New Approach Directives. OMEGA will add the CE mark to every appropriate device upon certification.

The information contained in this document is believed to be correct, but OMEGA accepts no liability for any errors it contains, and reserves the right to alter specifications without notice.

WARNING: These products are not designed for use in, and should not be used for, human applications.

INDEX

GENERAL INFORMATION	4
QUICK GUIDE	5
POWER SUPPLY CONNECTIONS	5
SIGNAL ADJUSTMENT	6 and 7
DIMENSIONS AND CONNECTIONS	8
TECHNICAL DATA	9
INPUT SIGNAL	9
OUTPUT SIGNAL	9
POWER SUPPLY	9
MECHANICAL DIMENSIONS	9
GALVANIC ISOLATION LEVELS	9
GENERAL SPECIFICATIONS	9
MATERIALS	9
CAUTIONS, WARNINGS AND NOTES	10

SAFETY CONSIDERATIONS

PRESCRIPTION.- Before starting any operation of adjustment, replacement, maintenance or repair, the unit must be disconnected



from any kind of power supply. Keep the unit clean, to assure good functioning and performance. To prevent electrical or fire hazard, do not expose the unit to excessive moisture. Do not operate the unit in the presence of flammable gases or fumes, such an environment definitely constitutes a safety hazard. The unit is designed to be mounted on a metal panel.

If the unit shows signs of damage, is not able to show the expected measures, has

been stored in a bad conditions or a protection failure happened, then do not attempt to operate, keep the unit out of service and send for repair.

IN CASE OF FIRE

- 1.- Disconnect the unit from the power supply
- 2.- Give the alarm according to the local rules
- 3.- Switch off all air conditioning devices
- 4.- Attack the fire with carbonic snow, do not use water in any case



WARNING: In closed areas do not use systems with vaporized liquids.

GENERAL INFORMATION

The DRF series of Isolated Signal Converters, allow to convert process signals, temperatures, electrical signals, etc, to current loops or voltage signals for further retransmission, while introducing into the system galvanic isolation barriers between the input, the output and the power supply circuits.

The DRF series of Isolated Signal Converters, offer an excellent relation between signal conversion speed and measurement accuracy. Offering up to a 0.2% accuracy and down to 70ms response time, these units can process information coming from probes or transducers, in such a way that can be quickly retransmitted in a fast and accurate form to remote data acquisition systems or PLC's. The isolated signal converters of the DRF series are ideal to integrate into 12 bit data acquisition systems.

Its powerful galvanic isolation of 3500 V introduces high security to the measuring systems, preventing the propagation of those phenomenon which usually cause damage, such as transient peaks or energy shocks in any of the circuits of the system. The galvanic isolation also acts as a strong CE barrier. The decoupling created between the circuits avoids pernicious effects on the output, such as ground loops or signal leaks, which distort the acquired data and are extremely difficult to isolate once introduced into the signal.

The isolation offered by the DRF series of Isolated Signal Converters is a 3 way isolation. Thus, all the benefits exposed above are applicable to any of the three circuits composing the instrument : input, output and power.

Recalibration of the instruments is realized in a fast and easy way. Opening the front cover grants access to the configuration jumpers. Additional Span and Offset potentiometers are directly accessible from the frontal part. These potentiometers are highly decoupled, minimizing the iterations needed to obtain a correct adjustment.

In order to obtain a higher and quickest benefit of the DRF units, we recommend you to read carefully the information provided in this manual before proceeding to the installation of the instrument. In this manual you will find all technical data, both electrical and mechanical, needed for a correct instalation and utilization.

Note : The DRF Series Isolated Signal Converters have a characteristics label attached on the side of the instrument. Check that this information matches with your requirements for the specific application, and especially check the value and type of the Power Supply.

QUICKGUIDE

The DRF units have a front cover which can be opened down. This cover gives access to the Span and Offset potentiometers, and to the selection jumpers for input and output signal ranges.

To open the front cover, press slightly the sides of the cover at the upper side, close to the OUTPUT terminals, as indicated on Figure1.

The cover is free to open down, as shown on Figure2.

POWER SUPPLY CONNECTIONS

DRF units are powered through the plug-in terminal positioned on the upper side of the instrument. This terminal is placed in a transverse axis, different from the other terminals. Close to the power supply terminal there is a small yellow label with indications on the connections for AC and DC

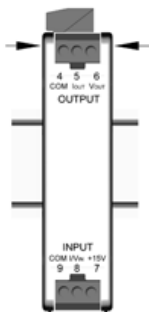
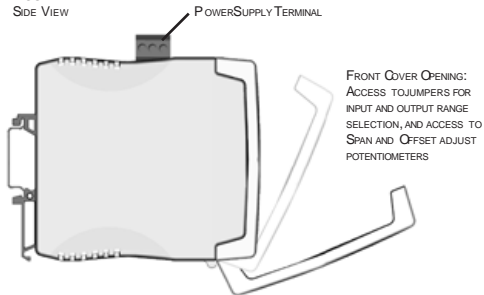


FIGURE1
FRONT VIEW WITH COVER

IMPORTANT !! Check that the power supply indicated on the white label attached to the side of the instrument, matches with the power supply you want to connect.

For more accurate information on the power supply connections, please see page 6 of this manual.

FIGURE2
SIDE VIEW



SIGNAL ADJUSTMENT

To proceed to adjust a range of input and output signals, first select with the appropriate jumpers, the signal ranges

which include your desired adjustment. Then proceed to the adjustment.

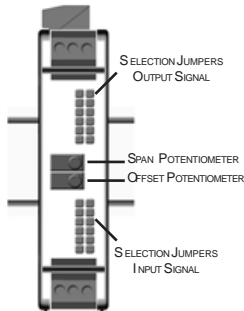
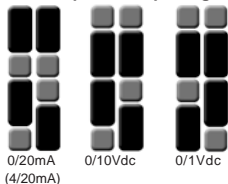


FIGURE 3
FRONT VIEW
WITHOUT COVER

Selection Jumpers : Output Signal Range



Selection Jumpers : Input Signal Range Selection Jumpers: Input Signal Type (See next page)

For your safety select input and output jumpers BEFORE generating signal for the adjustment.

Adjustment

- 1.- Connect input signal to terminals (8 «signal» and 9 «common»).
- 2.- Connect a multimeter to the output signal terminals (4 and 5 for mA or 4 and 6 for Vdc).

(Values in brackets are examples for a calibration 0/1 KHz = 0/10Vdc)

- 3.- Input a zero signal (0Hz).
Operate offset potentiometer until getting a zero output (0Vdc).
- 4.- Input the difference between the high and low input levels (1000-0=1000Hz).

Operate span potentiometer until getting an output which is the difference between the high and low output levels (10-0=10Vdc).

- 5.- Input low input level (0Hz).
Operate offset potentiometer until getting the low level output (0Vdc).
- 6.- Input high input level and check that that the output also matches the desired level (1000 Hz=10Vdc)

If more accurate measurement is needed, repeat steps 5 and 6.

Most of the input / output combinations will be properly adjusted within the instrument accuracy after these steps. Close front cover once calibration is finished.

Selection Jumpers : Input Signal Ranges

0/50 KHz 0/30 KHz 0/20 KHz 0/10 KHz



0/5 KHz 0/3 KHz 0/2 KHz 0/1 KHz



0/500 Hz 0/300 Hz 0/200 Hz 0/100 Hz



0/100 Hz 0/60 Hz 0/40 Hz 0/20 Hz



Selection Jumpers : Input Signal Type

NPN PNP NAMUR



<24 VAC <200 VAC



Selection : Excitation Voltage

Within the set of jumpers for Input Signal Range, the last jumper allows selection of the level of Excitation Voltage Output generated by the DRF.

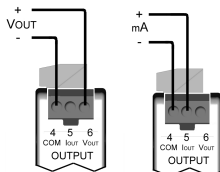
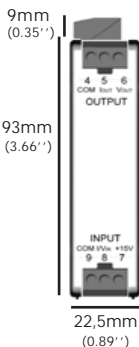


Vexc .- +15V
(20mA)

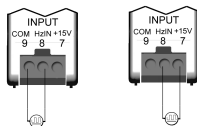


Vexc .- 9V2
NAMUR

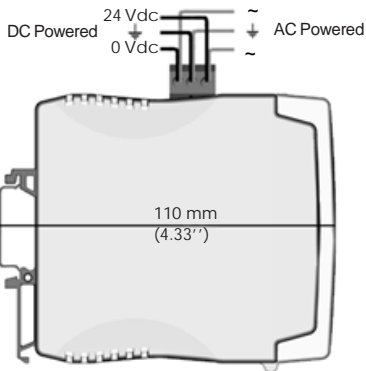
DIMENSIONS AND CONNECTIONS



Output Connections



Input Connections

SENSOR POWERED
EXTERNALLYNAMUR OR PNP
SENSOR POWERED
FROM DRFSpecial Width for
AC Power models

TECHNICAL DATA : DRF-FR**INPUT SIGNAL in FREQUENCY**

RANGES 50KHz,30KHz,20KHz,10KHz
5KHz, 3KHz, 2KHz, 1KHz
500Hz,300Hz,200Hz,100Hz
60Hz,40Hz,20Hz
(minimum 10Hz)

SIGNAL NPN, PNP
NAMUR
PICK-UP Voltage Impulse
SINUSOIDAL up to 200Vac

Vexc 15 Vdc @ 20mA
9V2 for NAMUR

OUTPUT SIGNAL in VDC

RANGES 0/10 Vdc
0/1 Vdc
Max Output 11Vdc approx.
Min Output -1Vdc approx.
Min Load R $\geq 1\text{K}\Omega$

OUTPUT SIGNAL in mA

RANGES 0/20mA (4/20mA)
Max Output 22mA approx.
Min Output -1.5mA approx.
Max Load R $\leq 400\ \Omega$

POWER SUPPLY

DC Power 24Vdc $\pm 10\%$
AC Power 230Vac $\pm 10\%$ 50/60 Hz
115Vac $\pm 10\%$ 50/60 Hz
Consumption $< 3.8\text{VA}$

MECHANICAL DIMENSIONS

DC Units 22.5 x 93 x 110 mm
AC Units 37.0 x 93 x 110 mm
Weight DC 120 gr.
Weight AC 200 gr.

Standard DIN rail mounting, as specified on
DIN46277 and DIN EN 50022
37.5 x 7.5 mm (1.38 x 0.3 ``)

GALVANIC ISOLATION LEVELS

DC Units
Input - Output 3,5 KV (60 seconds)
Power-Input 3,5 KV (60 seconds)
Power-Output 1 KV (60 seconds)

AC Units
Input - Output 3,5 KV (60 seconds)
Power-Input 3,5 KV (60 seconds)
Power - Output 3,5 KV (60 seconds)

*All isolation levels are tested during a time
of 60 seconds, with current leaks $< 1\text{mA}$*

*Note : Indicated isolation levels are also
sometimes named as STRENGTHENED
ISOLATION levels, for systems with
Pollution Level 2*

GENERAL SPECIFICATIONS

Accuracy $< 0.2\%$ F.S.
Optimized for 12 bit systems
Linearity $< 0.1\%$ F.S.
Thermal Drift $< 250\ \text{ppm}/^\circ\text{C}$ Typical
Warm-Up Time 5 minutes

Response Time for signal ranges of
0/100 Hz $< 300\text{mS}$ (90% of signal)
0/500 Hz $< 250\text{mS}$ (90% of signal)
0/5 KHz $< 200\text{mS}$ (90% of signal)
0/50 KHz $< 150\text{mS}$ (90% of signal)

Plug-In Screw Terminals
Maximum Wire Section 2.5 mm²
Protection IP-30

Temp. Operation from 0 to 60°C
Temp. Storage from -20 to +70°C

MATERIALS

Box and Cover in Poliamide PA6 UL94
V-2 blue color
Terminals in Poliamide UL94 V-0

CAUTIONS, WARNINGS AND NOTES

INSTALLATION

PRECAUTIONS.- The installation and the future use of this unit must be done by qualified personnel. The unit has not AC (mains) switch, neither internal protection fuse. It will be in operation as soon as power is connected. The installation must incorporate an external mains switch with a protection fuse and also the necessary devices to protect the operator and the process when using the unit to a control machine or process where injury to personnel or damage to equipment or process may occur as a result of failure of the unit.



RECOMMENDED FUSES

24 Vdc 230 Vac 115 Vac
 250mA 70 mA 100 mA
 All fuses .-Time Lag Fuse

SAFETY PRESCRIPTIONS.- The unit has been designed and tested under EN-61010-1 rules and is delivered in good conditions. This User's Manual contains useful information the user has to respect in order to warrant a proper function of the unit, and good security conditions. The unit is designed for internal applications, with good ventilation to avoid excessive heating. It can **occasionally** be applied to temperatures down to 10°C or up to 70°C without security degradation. Do all connections before applying power to the unit. Do not make wiring changes until power is disconnected from the unit.

Install the unit far from elements generating electric noise, or magnetic

fields, such as power relays, electrical engines, speed regulators, etc. Do not use until installation is completed.

POWER SUPPLY.- The power supply must be connected to the adequate terminals 1, 2 and 3. The characteristics of the power supply are shown on the side label. Please make sure that the unit is correctly connected to a power supply of the correct voltage and frequency. Do not connect the unit to lines which are overloaded or which provide power to systems working on ON-OFF cycles or inductive loads.

ATTENTION : If the power supply is DC voltage, be careful with the polarity indicated for each terminal.

SIGNAL WIRING .- Certain considerations must be given when installing the signal input wires. If the wires are long, they can act as an antenna introducing electrical noise into the unit. Therefore :

Do not install the signal input wires in the same conduit with power lines, heaters, solenoids, SCR controls, etc ... and always far from these elements.

When shielded wires are used, leave unconnected the shield on the transmitter side and connect the other end of the shield to the ground terminal of the machine.

EXCITATION VOLTAGE.- Model DRF-PR incorporates an internal power supply for transducers. The output of this power supply is connected to terminals 7 and 9. Do not connect these terminals to an external power supply, because both units will be permanently damaged.

WARRANTY/DISCLAIMER

OMEGA ENGINEERING, INC. warrants this unit to be free of defects in materials and workmanship for a period of **13 months** from date of purchase. OMEGA's Warranty adds an additional one (1) month grace period to the normal **one (1) year product warranty** to cover handling and shipping time. This ensures that OMEGA's customers receive maximum coverage on each product.

If the unit malfunctions, it must be returned to the factory for evaluation. OMEGA's Customer Service Department will issue an Authorized Return (AR) number immediately upon phone or written request. Upon examination by OMEGA, if the unit is found to be defective, it will be repaired or replaced at no charge. OMEGA's WARRANTY does not apply to defects resulting from any action of the purchaser, including but not limited to mishandling, improper interfacing, operation outside of design limits, improper repair, or unauthorized modification. This WARRANTY is VOID if the unit shows evidence of having been tampered with or shows evidence of having been damaged as a result of excessive corrosion; or current, heat, moisture or vibration; improper specification; misapplication; misuse or other operating conditions outside of OMEGA's control. Components in which wear is not warranted, include but are not limited to contact points, fuses, and triacs.

OMEGA is pleased to offer suggestions on the use of its various products. However, OMEGA neither assumes responsibility for any omissions or errors nor assumes liability for any damages that result from the use of its products in accordance with information provided by OMEGA, either verbal or written. OMEGA warrants only that the parts manufactured by the company will be as specified and free of defects. OMEGA MAKES NO OTHER WARRANTIES OR REPRESENTATIONS OF ANY KIND WHATSOEVER, EXPRESSED OR IMPLIED, EXCEPT THAT OF TITLE, AND ALL IMPLIED WARRANTIES INCLUDING ANY WARRANTY OF MERCHANTABILITY AND FITNESS FOR A PARTICULAR PURPOSE ARE HEREBY DISCLAIMED. LIMITATION OF LIABILITY: The remedies of purchaser set forth herein are exclusive, and the total liability of OMEGA with respect to this order, whether based on contract, warranty, negligence, indemnification, strict liability or otherwise, shall not exceed the purchase price of the component upon which liability is based. In no event shall OMEGA be liable for consequential, incidental or special damages.

CONDITIONS: Equipment sold by OMEGA is not intended to be used, nor shall it be used: (1) as a "Basic Component" under 10 CFR 21 (NRC), used in or with any nuclear installation or activity; or (2) in medical applications or used on humans. Should any Product(s) be used in or with any nuclear installation or activity, medical application, used on humans, or misused in any way, OMEGA assumes no responsibility as set forth in our basic WARRANTY/DISCLAIMER language, and, additionally, purchaser will indemnify OMEGA and hold OMEGA harmless from any liability or damage whatsoever arising out of the use of the Product(s) in such a manner.

RETURN REQUESTS/INQUIRIES

Direct all warranty and repair requests/inquiries to the OMEGA Customer Service Department. BEFORE RETURNING ANY PRODUCT(S) TO OMEGA, PURCHASER MUST OBTAIN AN AUTHORIZED RETURN (AR) NUMBER FROM OMEGA'S CUSTOMER SERVICE DEPARTMENT (IN ORDER TO AVOID PROCESSING DELAYS). The assigned AR number should then be marked on the outside of the return package and on any correspondence. The purchaser is responsible for shipping charges, freight, insurance and proper packaging to prevent breakage in transit.

FOR **WARRANTY** RETURNS, please have the following information available BEFORE contacting OMEGA:

1. Purchase Order number under which the product was PURCHASED,
2. Model and serial number of the product under warranty, and
3. Repair instructions and/or specific problems relative to the product.

FOR **NON-WARRANTY** REPAIRS, consult OMEGA for current repair charges. Have the following information available BEFORE contacting OMEGA:

1. Purchase Order number to cover the COST of the repair,
2. Model and serial number of the product, and
3. Repair instructions and/or specific problems relative to the product.

OMEGA's policy is to make running changes, not model changes, whenever an improvement is possible. This affords our customers the latest in technology and engineering.

OMEGA is a registered trademark of OMEGA ENGINEERING, INC.

© Copyright 2005 OMEGA ENGINEERING, INC. All rights reserved. This document may not be copied, photocopied, reproduced, translated, or reduced to any electronic medium or machine-readable form, in whole or in part, without the prior written consent of OMEGA ENGINEERING, INC.

Where Do I Find Everything I Need for Process Measurement and Control?

OMEGA...Of Course!

Shop online at omega.com

TEMPERATURE

- ☑ Thermocouple, RTD & Thermistor Probes, Connectors, Panels & Assemblies
- ☑ Wire: Thermocouple, RTD & Thermistor
- ☑ Calibrators & Ice Point References
- ☑ Recorders, Controllers & Process Monitors
- ☑ Infrared Pyrometers

PRESSURE, STRAIN AND FORCE

- ☑ Transducers & Strain Gages
- ☑ Load Cells & Pressure Gages
- ☑ Displacement Transducers
- ☑ Instrumentation & Accessories

FLOW/LEVEL

- ☑ Rotameters, Gas Mass Flowmeters & Flow Computers
- ☑ Air Velocity Indicators
- ☑ Turbine/Paddlewheel Systems
- ☑ Totalizers & Batch Controllers

pH/CONDUCTIVITY

- ☑ pH Electrodes, Testers & Accessories
- ☑ Benchtop/Laboratory Meters
- ☑ Controllers, Calibrators, Simulators & Pumps
- ☑ Industrial pH & Conductivity Equipment

DATA ACQUISITION

- ☑ Data Acquisition & Engineering Software
- ☑ Communications-Based Acquisition Systems
- ☑ Plug-in Cards for Apple, IBM & Compatibles
- ☑ Datalogging Systems
- ☑ Recorders, Printers & Plotters

HEATERS

- ☑ Heating Cable
- ☑ Cartridge & Strip Heaters
- ☑ Immersion & Band Heaters
- ☑ Flexible Heaters
- ☑ Laboratory Heaters

ENVIRONMENTAL MONITORING AND CONTROL

- ☑ Metering & Control Instrumentation
- ☑ Refractometers
- ☑ Pumps & Tubing
- ☑ Air, Soil & Water Monitors
- ☑ Industrial Water & Wastewater Treatment
- ☑ pH, Conductivity & Dissolved Oxygen Instruments