

I Install the HH506RA Software

1. Run setup.exe on your HH506RA software disk.
2. Change the path if necessary or choose "Finish" button to install program directly.

Note:

1. Check the HH506RA software disk for virus before installation.
2. System required: 80486-33 with 16MB RAM or better.

II HH506RA Software Operate manual



Button

- [T1 input]
- [T2 input]
- [T1-T2]
- [RECORD]
- [READ DATA]
- [START]

Description

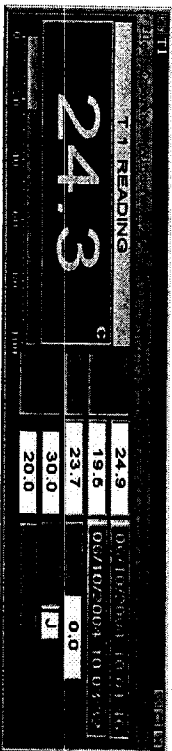
- Open the T1 input control window to activate function.
- Open the T2 input control window to activate function.
- Open the T1-T2 control window to activate function.
- Open the Recording control window to activate function.
- To read saved data.
- Press the "START" button to activate HH506RA's serial port output and then the auto-power-off function of the meter will be disabled.
- Stop HH506RA's serial port output and the auto-power-off feature of HH506RA is enable.
- The "WORKING" sign will blink when the RS-232 is communicating, otherwise "RS-232ERR." will be shown.
- Select serial port (from COM Port 1 to 4).

[STOP]

[WORKING]

The "WORKING" sign will blink when the RS-232 is communicating, otherwise "RS-232ERR." will be shown.

[COM PORT]



Button

- [MAX MIN]
- [AVG]
- [REL]

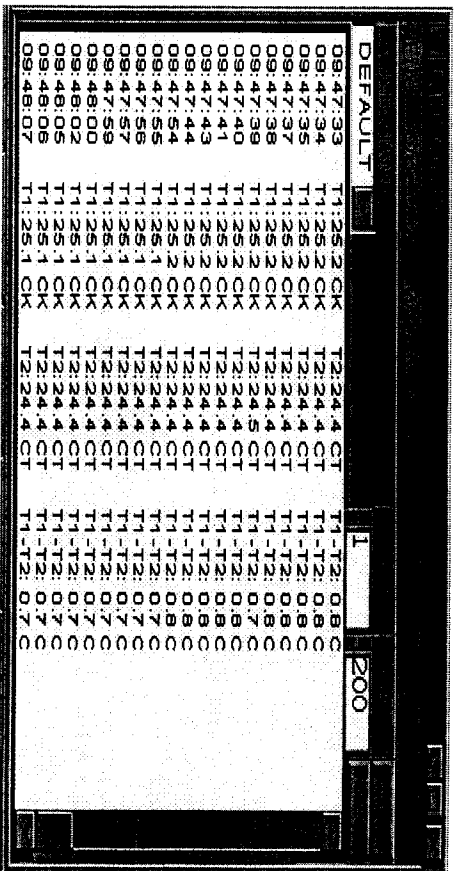
Description

- Activate Maximum and Minimum reading measurement with time.
- Activate Average reading measurement.
- Activate Relative mode.

[HI LO]

[TYPE]
[GRAPH]

Activate Hi/Lo limit comparative mode and the limit will also be visible on the graphical display as red (HI) and blue(LO) horizontal line. The displayed reading will blink between red and green when input temperature value exceed HI value. The displayed reading will blink between red and green when input temperature value exceed LO value.
Select the K/J/T/E/R/S/N type thermocouple as input.
Open the GRAPH sub-window.



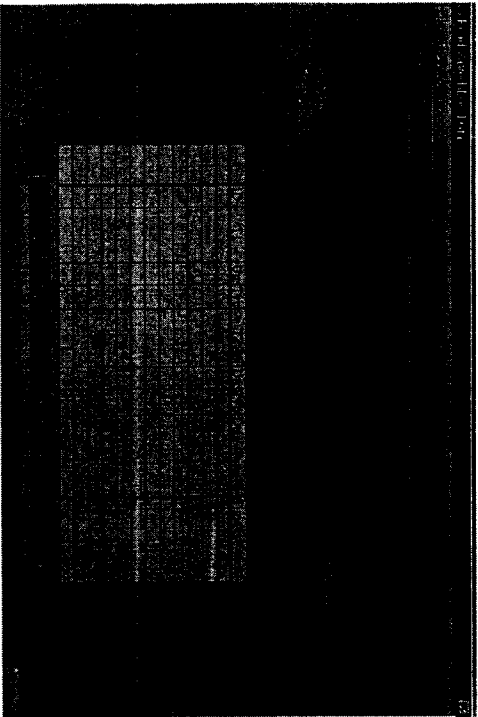
Button

- [FILE NAME]
- [INTV]
- [LIST]
- [CLR]
- [REC]
- [OFF]

Description

1. DEFAULT-saving: the file name saved with time.xls
Such as : C:\HH506RA\06161133.xls.
2. User-saving: the file name saved by user.
Enter the number of second between recording input reading shifting bar.
Clear the message window.
Start the recording.
Stop the recording.

READ DATA



Button
[Query]
[Boolean]
[Saved Data]
[Log Data]

Description
To read the saved data.
Table: Table format; Diagram: Diagram format.
To read saved data.
To read logged data.

III Setup, Start & Exit on Software

A. Quick Start At the HH506RA

1. Install the RS-232 cable between PC's Com port and HH506RA's RS-232 port.
Please make sure:
 - IR2 sign on the RS232 cable connector(to meter) faced up with panel.
 - Physical Com port number has to be the same as setup in software.
2. Turn the HH506RA on.

At the PC



1. Open the HH506RA software by double-clicking on the icon SETUP.exe.
2. Press the COM PORT button to select the serial port (from COM1 to COM4).
3. Press the "START" button to activate HH506RA's serial port output and then the auto-power-off function of the meter will be disabled.
4. Press the T1 INP/UT, T2 INP/UT or T1-T2 button to open the control window and

B. Quick Stop

1. Press the STOP button to stop HH506RA's serial port output and the auto-power-off feature of the meter is enabled, "WORKING" sign will disappear, then all control window will close.

C. Quick Exit

1. Click Exit to exit HH506RA application.