

# Where Do I Find Everything I Need for Process Measurement and Control? OMEGA...Of Course!

Shop online at [www.omega.com](http://www.omega.com)

## TEMPERATURE

- ☑ Thermocouple, RTD & Thermistor Probes, Connectors, Panels & Assemblies
- ☑ Wire: Thermocouple, RTD & Thermistor
- ☑ Calibrators & Ice Point References
- ☑ Recorders, Controllers & Process Monitors
- ☑ Infrared Pyrometers

## PRESSURE, STRAIN AND FORCE

- ☑ Transducers & Strain Gages
- ☑ Load Cells & Pressure Gages
- ☑ Displacement Transducers
- ☑ Instrumentation & Accessories

## FLOW/LEVEL

- ☑ Rotameters, Gas Mass Flowmeters & Flow Computers
- ☑ Air Velocity Indicators
- ☑ Turbine/Paddlewheel Systems
- ☑ Totalizers & Batch Controllers

## pH/CONDUCTIVITY

- ☑ pH Electrodes, Testers & Accessories
- ☑ Benchtop/Laboratory Meters
- ☑ Controllers, Calibrators, Simulators & Pumps
- ☑ Industrial pH & Conductivity Equipment

## DATA ACQUISITION

- ☑ Data Acquisition & Engineering Software
- ☑ Communications-Based Acquisition Systems
- ☑ Plug-in Cards for Apple, IBM & Compatibles
- ☑ Datalogging Systems
- ☑ Recorders, Printers & Plotters

## HEATERS

- ☑ Heating Cable
- ☑ Cartridge & Strip Heaters
- ☑ Immersion & Band Heaters
- ☑ Flexible Heaters
- ☑ Laboratory Heaters

## ENVIRONMENTAL MONITORING AND CONTROL

- ☑ Metering & Control Instrumentation
- ☑ Refractometers
- ☑ Pumps & Tubing
- ☑ Air, Soil & Water Monitors
- ☑ Industrial Water & Wastewater Treatment
- ☑ pH, Conductivity & Dissolved Oxygen Instruments

M3742/0601



# User's Guide

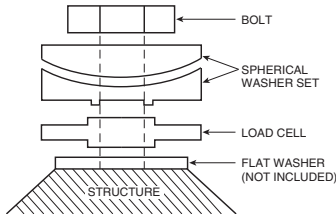
Shop online at

**omega.com**<sup>®</sup>

OMEGA<sup>®</sup>

[www.omega.com](http://www.omega.com)

e-mail: [info@omega.com](mailto:info@omega.com)



# SPW SPHERICAL LOAD WASHERS

## IMPORTANT SAFETY INFORMATION



### WARNING!

These components are used under high forces. They should only be installed and operated by qualified, authorized personnel.



### WARNING!

DO NOT MODIFY THIS LOAD CELL AND ITS COMPONENT PARTS OR SUBSTITUTE PARTS. Because of the danger of introducing hazards; do not perform any unauthorized modifications or install substitute parts to the instrument.

| SPHERICAL WASHERS |             |            |
|-------------------|-------------|------------|
| Part Number       | Bore Size   | Bolt Size  |
| SPW-2             | 0.35 (8.9)  | 5/16 (7.9) |
| SPW-2             | 0.35 (8.9)  | 5/16 (7.9) |
| SPW-2             | 0.35 (8.9)  | 5/16 (7.9) |
| SPW-2             | 0.35 (8.9)  | 5/16 (7.9) |
| SPW-2             | 0.35 (8.9)  | 5/16 (7.9) |
| SPW-2             | 0.35 (8.9)  | 5/16 (7.9) |
| SPW-3             | 0.41 (10.3) | 3/8 (9.5)  |
| SPW-5             | 0.66 (16.7) | 5/8 (15.9) |
| SPW-7             | 0.94 (23.8) | 7/8 (22.2) |
| SPW-7             | 0.94 (23.8) | 7/8 (22.2) |