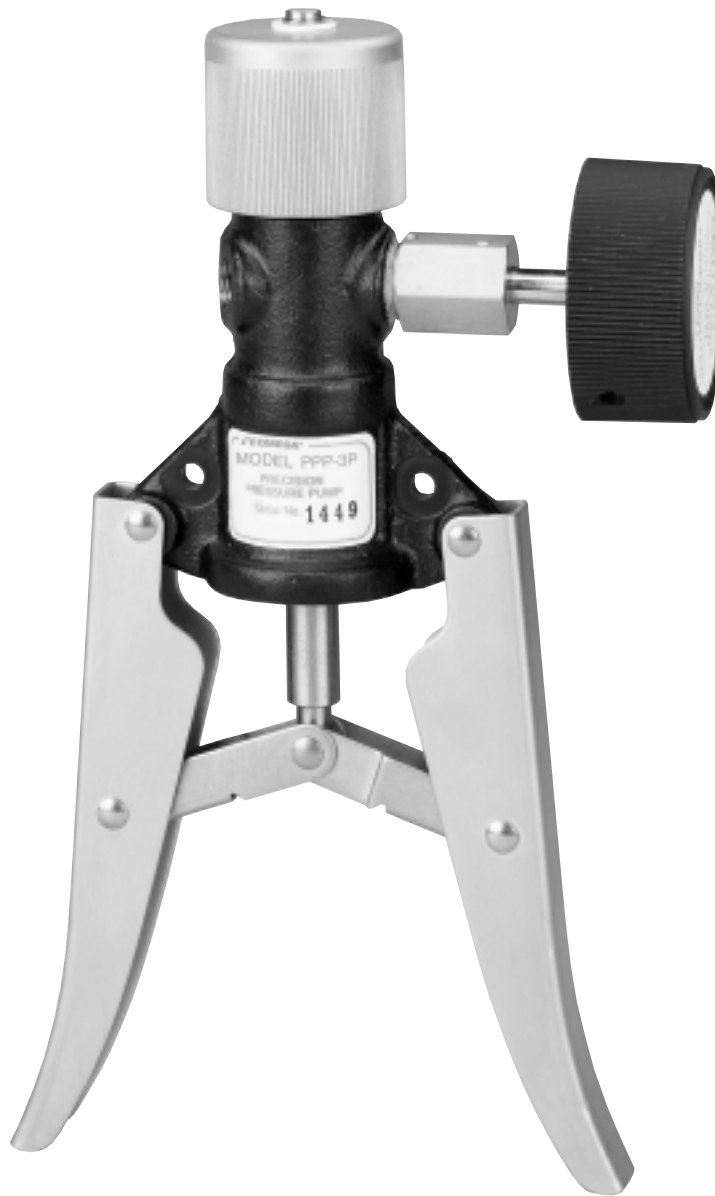


PPP-3P Precision Pressure Pump

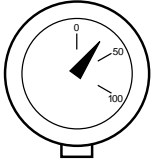


Operator's Manual

OPERATING INSTRUCTIONS

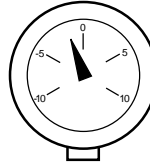
IMPORTANT: Read all operating instructions and general operating information *before* beginning any test procedures.

PRODUCING POSITIVE PRESSURE



- 1) Connect one of the Model PPP-3P's ports to the instrument to be calibrated or checked. Use small-diameter tubing as short in length as possible (this will maximize the pressure adjustment range). An auxiliary port is provided for simultaneous output to a second device, e.g., application of pressure to an instrument or system under test and to a pressure standard to measure the actual pressure output. If the auxiliary port is not used, it should be securely plugged.
- 2) Set the brass fine pressure adjustment knob on the top of the pump to the mid-travel position as indicated by the line cast into the pump body.
- 3) Turn the black discharge knob on the side of the pump fully clockwise. Do not overtighten.
- 4) Squeeze the actuating levers to generate pressure. At pressures above 150 psig the levers should be squeezed harder and more quickly at the end of the stroke. Additional force is required to open the discharge valve due to higher line pressure.
- 5) Use the discharge and fine pressure knobs to adjust pressure to the desired level.

PRODUCING NEGATIVE PRESSURE



- 1) Perform Step 1 as described above.
- 2) Turn the brass fine pressure adjustment fully clockwise until resistance is felt. Do not overtighten.
- 3) Turn the discharge knob fully clockwise. Do not overtighten.
- 4) Turn the fine pressure adjustment counter-clockwise to generate the desired negative pressure (to -2 psig).

WARNING



Even nominal pressure values can generate extreme force if fitting or tubing failure occurs due to improper installation or usage. Since the Model PPP-3P is capable of generating pressures over 100 psig, it is imperative that all pressure connections and test procedures be done by qualified service personnel, according to standard engineering practices, to prevent possible personal injury or equipment damage.

GENERAL OPERATING INSTRUCTIONS

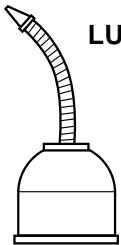
TEMPERATURE CONSIDERATIONS



Since the pressure change of a contained volume of gas is directly proportional to absolute temperature, temperature control is critical when using the Model PPP-3P with any high-resolution measuring device. Tubing should be kept away from heat sources (i.e., lamps, operating electronic equipment, excessive hand contact, etc.) as well as from heat-dissipating structures (i.e., open windows, air conditioning vents, ventilation ducts, etc.) to minimize temperature variations that might induce measurement error.

Air is compressed when the Model PPP-3P's actuating levers are squeezed. This compression causes some heating of the air as it is forced into the system. Consequently, a noticeable decrease in pressure—caused by the cooling of the newly compressed air—may occur immediately after cessation of pumping.

LUBRICATION



The Model PPP-3P is lubricated at the factory and under normal operating conditions should not require additional lubrication. If lubrication is required, invert the pump and apply two drops of a light-grade machine oil to the piston rod near the base of the pump body. Do not over-oil.

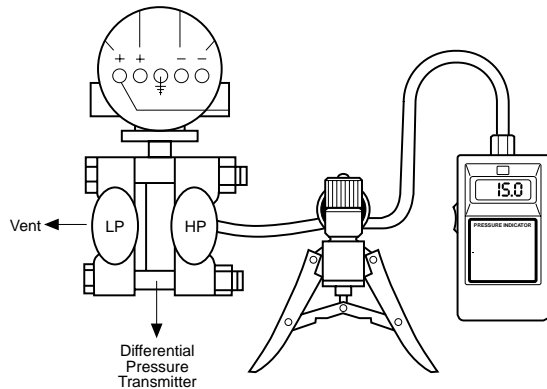
LEAK PREVENTION AND DETECTION



In order to obtain maximum pressure indication stability, leaks must be avoided. It is strongly recommended that either Teflon® tape or commercial pipe sealant be used at all tapered fittings and connections. If Teflon® tape is used, care must be taken that the proper amount is applied. Excessive tape may fray and cause plugging of relief valves, orifices, nozzles, etc. Overuse of pipe sealant may cause similar problems.

External equipment should also be checked carefully for leaks. Process connections, flange bolts, and vents must be tightly closed. Defective gaskets, leaking valves, and damaged diaphragms are all potential sources of leaks.

For detection of very small system leaks, the traditional soap bubble method may not be sufficient. Halogen leak detection devices may be required when using highly sensitive pressure calibration equipment.



SPECIFICATIONS

OUTPUT RANGE: -2 to 200 psig

RESOLUTION: 0.001 psig

PRESSURE CONNECTIONS

Primary Port: 1/8"-27 NPT

Auxiliary Port: 1/8"-27 NPT

WEIGHT: 0.87 kg (1.9 lb.)

MEDIA COMPATIBILITY: Non-conductive, non-corrosive, instrument-grade clean air or inert gas

CONSTRUCTION: Machined brass pump body, piston; stainless steel piston rod, handles



OMEGAnetSM On-Line Service
<http://www.omega.com>

Internet e-mail
info@omega.com

Servicing North America:

USA:
ISO 9001 Certified

One Omega Drive, Box 4047
Stamford, CT 06907-0047
Tel: (203) 359-1660 FAX: (203) 359-7700

Canada:

976 Berger
Laval (Quebec) H7L 5A1
Tel: (514) 856-6928 FAX: (514) 856-6886

For immediate technical or application assistance:

USA and Canada:

Sales Service: 1-800-826-6342 / 1-800-TC-OMEGASM
Customer Service: 1-800-622-2378 / 1-800-622-BESTSM
Engineering Service: 1-800-872-9436 / 1-800-USA-WHENSM
TELEX: 996404 EASYLINK: 62968934 CABLE: OMEGA

Mexico:

Tel: (95) 800-TC-OMEGASM FAX: (95) 203-359-7807

Servicing Europe:

Benelux:

Postbus 8034, 1180 LA Amstelveen, The Netherlands
Tel: (31) 20 6418405 FAX: 42 (69) 631114
e-mail: nl@omega.com

Czech Republic:

Ostravska 767, 733 01 Karvina
Tel: 42 (69) 6311899 FAX: 42 (69) 631114
e-mail: czech@omega.com

France:

9, Rue Denis Papin, 78190 Trappes
Tel: 33 (1) 30.62.14.00 FAX: 33 (1) 30.69.91.20
Toll Free in France: 05-4-OMEGA
e-mail: france@omega.com

Germany/Austria:

Daimlerstrasse 26, D-75392 Deckenpfronn, Germany
Tel: 49 (07056) 3017 FAX: 49 (07056) 8540
Toll Free in Germany: 0130 11 21 66

United Kingdom:

ISO 9002 Certified

25 Swannington Road, Broughton Astley, Leicestershire,
LE9 6TU, England
Tel: 44 (1455) 285520 FAX: 44 (1455) 283912
Toll Free in England: 0800-488-488
e-mail: uk@omega.com

It is the policy of OMEGA to comply with all worldwide safety and EMC/EMI regulations that apply. OMEGA is constantly pursuing certification of its products to the European New Approach Directives. OMEGA will add the CE mark to every appropriate device upon certification.

The information contained in this document is believed to be correct but OMEGA ENGINEERING, Inc. accepts no liability for any errors it contains, and reserves the right to alter specifications without notice.

WARNING: These products are not designed for use in, and should not be used for, patient connected applications

RETURN REQUESTS / INQUIRIES

Direct all warranty and repair requests/inquiries to @OMEGA Customer Service Department. BEFORE RETURNING ANY PRODUCT(S) TO OMEGA, PURCHASER MUST OBTAIN AN AUTHORIZED RETURN (AR) NUMBER FROM OMEGA'S CUSTOMER SERVICE DEPARTMENT (IN ORDER TO AVOID PROCESSING DELAYS). The assigned AR number should then be marked on the outside of the return package and on any correspondence.

The purchaser is responsible for shipping charges, freight, insurance and proper packaging to prevent breakage in transit.

FOR **WARRANTY** RETURNS, please have the following information available BEFORE contacting OMEGA:

1. P.O. number under which the product was PURCHASED,
2. Model and serial number of the product under warranty, and
3. Repair instructions and/or specific problems relative to the product

FOR **NON-WARRANTY** REPAIRS, consult OMEGA for current repair charges. Have the following information available BEFORE contacting OMEGA:

1. P.O. number to cover the cost of repair,
2. Model and serial number of product, and
3. Repair instructions and/or specific problems relative to the product.

OMEGA's policy is to make running changes, not model changes, whenever an improvement is possible. This affords our customers the latest in technology and engineering.

OMEGA is a registered trademark of OMEGA ENGINEERING, INC.

© Copyright 1999 OMEGA ENGINEERING, INC. All rights reserved. This document may not be copied, photocopied, reproduced, translated, or reduced to any electronic medium or machine-readable form, in whole or part, without prior written consent of OMEGA ENGINEERING, INC.

Where Do I find Everything I Need for Process Measurement and Control? OMEGA...Of Course!

TEMPERATURE

- ✓ Thermocouple, RTD & Thermistor Probes, Connectors, Panels & Assemblies
- ✓ Wire: Thermocouple, RTD & Thermistor
- ✓ Calibrators & Ice Point References
- ✓ Recorders, Controllers & Process Monitors
- ✓ Infrared Pyrometers

PRESSURE, STRAIN AND FORCE

- ✓ Transducers & Strain Gauges
- ✓ Load cells & Pressure Gauges
- ✓ Displacement Transducers
- ✓ Instrumentation & Accessories

FLOW/LEVEL

- ✓ Rotameters, Gas Mass Flowmeters & Flow Computers
- ✓ Air Velocity Indicators
- ✓ Turbine/Paddlewheel Systems
- ✓ Totalizers & Batch Controllers

pH/CONDUCTIVITY

- ✓ pH Electrodes, Testers & Accessories
- ✓ Benchtop/Laboratory Meters
- ✓ Controllers, Calibrators, Simulators & Pumps
- ✓ Industrial pH & Conductivity Equipment

DATA ACQUISITION

- ✓ Data Acquisition & Engineering Software
- ✓ Communications-Based Acquisition Systems
- ✓ Plug-in Cards for Apple, IBM & Compatibles
- ✓ Datalogging Systems
- ✓ Recorders, Printers & Plotters

HEATERS

- ✓ Heating Cable
- ✓ Cartridge & Strip Heaters
- ✓ Immersion & Band Heaters
- ✓ Flexible Heaters
- ✓ Laboratory Heaters

ENVIRONMENTAL MONITORING AND CONTROL

- ✓ Metering & Control Instrumentation
- ✓ Refractometers
- ✓ Pumps & Tubing
- ✓ Air, Soil & Water Monitors
- ✓ Industrial Water & Wastewater Treatment
- ✓ pH, Conductivity & Dissolved Oxygen Instruments