

OM-EL-LITE

ULTRA COMPACT PANEL MOUNT DATALOGGER

INSTRUCTION
SHEET

M-3144

OM-EL-LITE offers a simple solution for measuring, displaying and recording temperature. The module has a memory capacity of up to 8064 readings and a battery life of up to 3 years.* OM-EL-LITE can be easily programmed and its data transferred via the integral communications connector. OM-EL-LITE can operate as a "stand-alone" logger or may be permanently connected to a system. Application examples include "Due Diligence" monitoring of refrigeration temperature, utilities use and environmental monitoring. The PC software, OM-EL-WIN-LITE, operates under Windows 3.1 and does not require specialist skill to operate. Data output is in text format and can be easily integrated into any popular spreadsheet. Graphical output is possible using the same software package. Consult the OM-EL-WIN-LITE software manual for further details.

- On-board Temperature Sensor
- Battery Powered
- Non-volatile Data
- Easy to Use
- Protection against Environment

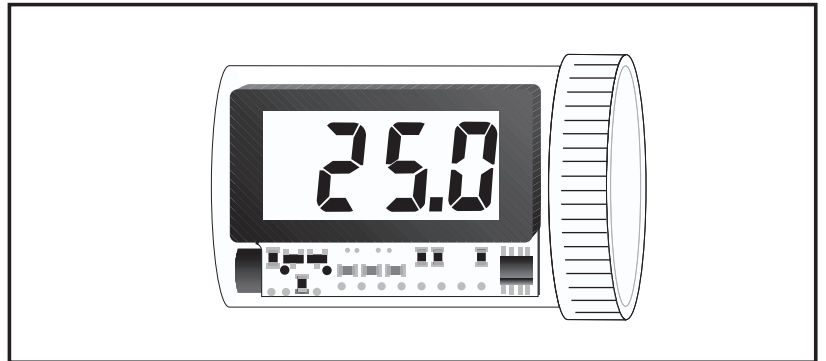
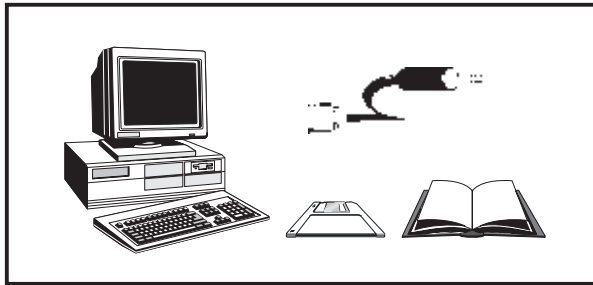
Windows™ 3.1 Control Software

Model No - OM-EL-WIN-LITE

Easy to install and use, the control software will allow the user to set up the EasyLog-Lite module, download the stored data and graph the results.

Supplied on 3½" disk, together with software manual and communications cable.

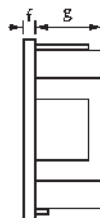
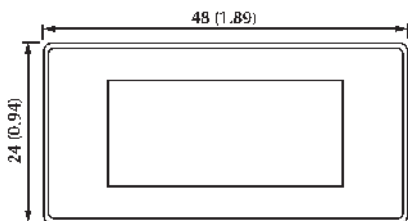
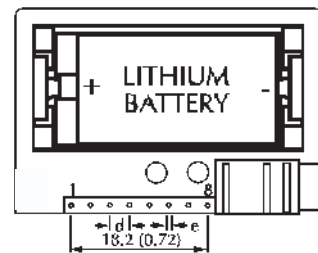
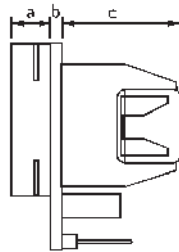
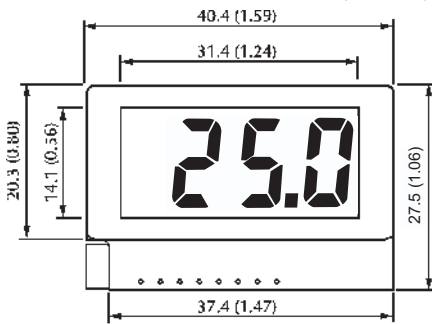
OM-EL-WIN-LITE will run under Windows 95.



Data Logger			Model No OM-EL-LITE
Specification	Range	Resolution	Accuracy
Operating Temperature	-10 to +50°C		
Temperature Measurement	-10 to +50°C	0.5°C	±1°C
	+14 to +122°F	0.5°F	±2°F
Battery Life	Up to 3 years (using 3.6V Lithium)*		
Serial Link	3.5mm Audio jack & 9 pin "AT" style		
Sensor Connection	Sensor mounted inside module		
Memory Capacity	Up to 8000 readings		
Logging Rate	1 sample per 5 seconds to 1 per 12 hour		

*Dependent on sampling rate.

DIMENSIONS All dimensions in mm (inches)



- a. 5.13 (0.20)
- b. 1.60 (0.06)
- c. 16.0 (0.63)
- d. 2.57 (0.10)
- e. 0.65 (0.03)
- f. 1.50 (0.06)
- g. 9.00 (0.35)

Panel cut-out
45 x 22.2 (1.77 x 0.87)

PANEL FITTING

Fit the bezel to the front of the panel and then locate the meter into the bezel from behind. Alternatively the meter and bezel may be assembled before fitting into the front of the panel but care must be taken not to use excessive force. Finally fit the window into the front of the bezel.

USING EXTERNAL SIGNALS

PIN FUNCTION

1. SW 'Push to record event' input. Connected via a push switch to V-.
2. RS Reset input. Connect to V- to reset logger.
3. HA High Alarm output = V+ when alarmed.
4. LA Low Alarm output = V+ when alarmed.
5. V+ Battery positive.
6. V- Battery negative.
7. TXD Transmit Data output. Connect to computer receive input.
8. RXD Receive Data input. Connect to computer transmit output.



Only connect outputs to high impedance inputs, otherwise performance will be affected and battery life drastically reduced.

BATTERY REPLACEMENT

Only use 1/2AA 3.6V lithium. The list below is not exhaustive. Check with supplier that the battery you are ordering is 'press fit' and is not fitted with solder tags or leads. Take care to connect correctly.

* DO NOT PRESS ON LCD WHEN INSERTING BATTERY.

MANUFACTURER	PART NUMBER	MANUFACTURER'S ORDER CODE
MAXELL	ER 35TC	n/a
SAFT	LS3	n/a
SONNENSCHN	SL-750/S	1107 501 100
TADIRAN	1/2AA/S	1551-02-210-000



WARNING: Handle lithium batteries carefully - observe warnings on battery casing. Dispose of in accordance with local regulations.

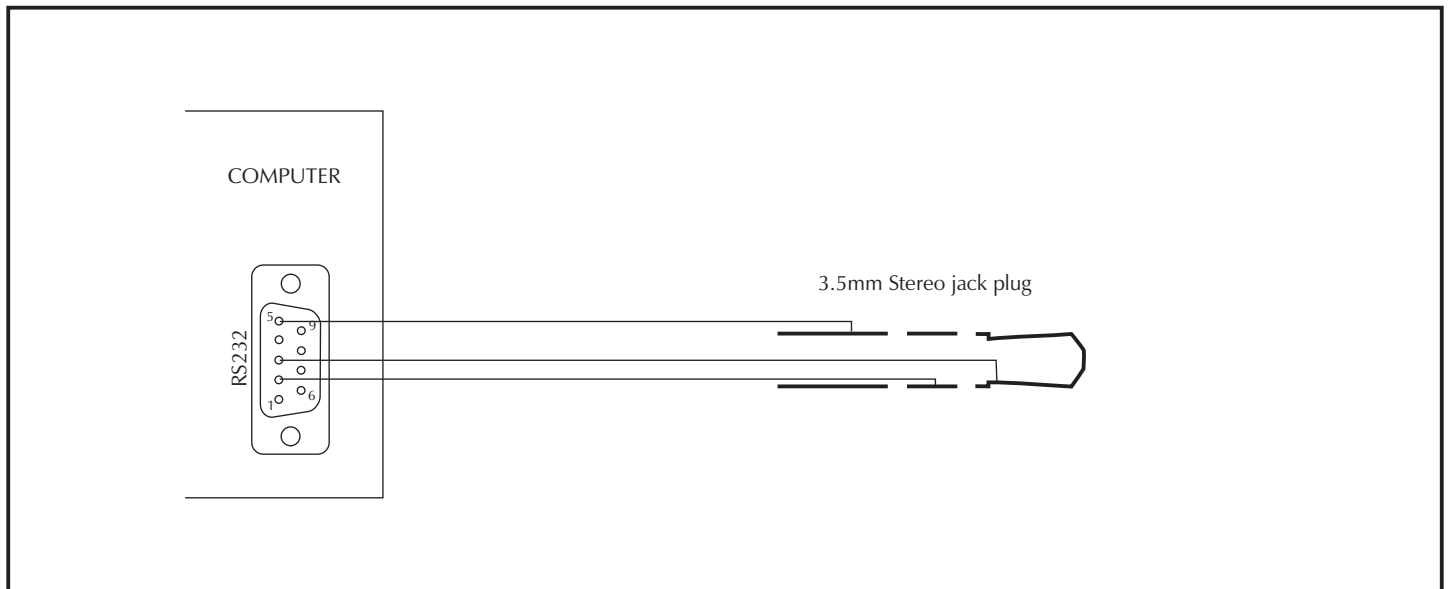


1. SINGLE EVENT OPERATION
(Make sure logger is set up correctly within OM-EL-WIN-LITE software.)

or

2. PUSH TO START,
if selected via OM-EL-WIN-LITE software.

Temperature sensor



OMEGAnet™ On-Line Service http://www.omega.com	Internet e-mail info@omega.com
--	---

Servicing North America:

USA: One Omega Drive, Box 4047
Stamford, CT 06907-0047
Tel: (203) 359-1660
e-mail: info@omega.com
FAX: (203) 359-7700

Canada: 976 Bergar
Laval (Quebec) H7L 5A1
Tel: (514) 856-6928
e-mail: canada@omega.com
FAX: (514) 856-6886

For immediate technical or application assistance:

USA and Canada: Sales Service: 1-800-826-6342 / 1-800-TC-OMEGASM
Customer Service: 1-800-622-2378 / 1-800-622-BESTSM
Engineering Service: 1-800-872-9436 / 1-800-USA-WHENSM
TELEX: 996404 EASYLINK: 62968934 CABLE: OMEGA

Mexico and Latin America: Tel: (95) 800-TC-OMEGASM FAX: (95) 203-359-7807
En Español: (203) 359-1660 ext:2203 e-mail: espanol@omega.com

Servicing Europe:

Benelux: Postbus 8034, 1180 LA Amstelveen, The Netherlands
Tel: (31) 20 6418405 FAX: (31) 20 6434643
Toll Free in Benelux: 06 0993344
e-mail: nl@omega.com

Czech Republic: Ostravska 767, 733 01 Karvina
Tel: 42 (69) 6311899 FAX: 42 (69) 6311114
e-mail: czech@omega.com

France: 9, rue Denis Papin, 78190 Trappes
Tel: (33) 130-621-400 FAX: (33) 130-699-120
Toll Free in France: 0800-4-06342
e-mail: france@omega.com

Germany/Austria: Daimlerstrasse 26, D-75392 Deckenpfronn, Germany
Tel: 49 (07056) 3017 FAX: 49 (07056) 8540
Toll Free in Germany: 0130 11 21 66
e-mail: germany@omega.com

United Kingdom: 25 Swannington Road, PO Box 7, Omega Drive,
Broughton Astley, Leicestershire, Irlam, Manchester,
LE9 6TU, England M44 5EX, England
Tel: 44 (1455) 285520 Tel: 44 (161) 777-6611
FAX: 44 (1455) 283912 FAX: 44 (161) 777-6622
Toll Free in England: 0800-488-488
e-mail: uk@omega.com

WARRANTY/DISCLAIMER

OMEGA ENGINEERING, INC. warrants this unit to be free of defects in materials and workmanship for a period of 13 months from date of purchase. OMEGA Warranty adds an additional one (1) month grace period to the normal one (1) year product warranty to cover handling and shipping time. This ensures that OMEGA's customers receive maximum coverage on each product.

If the unit should malfunction, it must be returned to the factory for evaluation. OMEGA's Customer Service Department will issue an Authorized Return (AR) number immediately upon phone or written request. Upon examination by OMEGA, if the unit is found to be defective it will be repaired or replaced at no charge. OMEGA's WARRANTY does not apply to defects resulting from any action of the purchaser, including but not limited to mishandling, improper interfacing, operation outside of design limits, improper repair, or unauthorized modification. This WARRANTY is VOID if the unit shows evidence of having been tampered with or shows evidence of being damaged as a result of excessive corrosion; or current, heat, moisture or vibration; improper specification; misapplication; misuse or other operating conditions outside of OMEGA's control. Components which wear are not warranted, including but not limited to contact points, fuses, and triacs.

OMEGA is pleased to offer suggestions on the use of its various products. However, OMEGA neither assumes responsibility for any omissions or errors nor assumes liability for any damages that result from the use of its products in accordance with information provided by OMEGA, either verbal or written. OMEGA warrants only that the parts manufactured by it will be specified and free of defects. OMEGA MAKES NO OTHER WARRANTIES OR REPRESENTATIONS OF ANY KIND WHATSOEVER, EXPRESSED OR IMPLIED, EXCEPT THAT OF TITLE, AND ALL IMPLIED WARRANTIES INCLUDING ANY WARRANTY OF MERCHANTABILITY AND FITNESS FOR A PARTICULAR PURPOSE ARE HEREBY DISCLAIMED. LIMITATION OF LIABILITY: The remedies of purchaser set forth herein are exclusive and the total liability of OMEGA with respect to this order, whether based on contract, warranty, negligence, indemnification, strict liability or otherwise, shall not exceed the purchase price of the component upon which liability is based. In no event shall OMEGA be liable for consequential, incidental or special damages.

CONDITIONS: Equipment sold by OMEGA is not intended to be used, nor shall it be used: (1) as a "Basic Component" under 10 CFR 21 (NRC), used in or with any nuclear installation or activity; or (2) in medical applications or used on humans. Should any Product(s) be used in or with any nuclear installation or activity, medical application, used on humans, or misused in any way, OMEGA assumes no responsibility as set forth in our basic WARRANTY/DISCLAIMER language, and additionally, purchaser will indemnify OMEGA and hold OMEGA harmless from any liability or damage whatsoever arising out of the use of the Product(s) in such a manner.

RETURN REQUESTS/INQUIRIES

Direct all warranty and repair requests/inquiries to the OMEGA Customer Service Department. BEFORE RETURNING ANY PRODUCT(S) TO OMEGA, PURCHASER MUST OBTAIN AN AUTHORIZED RETURN (AR) NUMBER FROM OMEGA'S CUSTOMER SERVICE DEPARTMENT (IN ORDER TO AVOID PROCESSING DELAYS). The assigned AR number should then be marked on the outside of the return package and on any correspondence.

The purchaser is responsible for shipping charges, freight, insurance and proper packaging to prevent breakage in transit. FOR WARRANTY RETURNS, please have the following information available BEFORE contacting OMEGA:

1. P.O. number under which the product was PURCHASED,
2. Model and serial number of the product under warranty, and
3. Repair instructions and/or specific problems relative to the product.

FOR NON-WARRANTY REPAIRS, consult OMEGA for current repair charges. Have the following information available BEFORE contacting OMEGA:

1. P.O. number to cover the COST of repair,
2. Model and serial number of the product, and
3. Repair instructions and/or specific problems relative to the product.

OMEGA's policy is to make running changes, not model changes, whenever an improvement is possible. This affords our customers the latest in technology and engineering. OMEGA is a registered trademark of OMEGA ENGINEERING, INC.

© Copyright 1996 OMEGA ENGINEERING, INC. All rights reserved. This document may not be copied, photocopied, reproduced, translated, or reduced to any electronic medium or machine-readable form, in whole or in part, without prior written consent of OMEGA ENGINEERING, INC.

It is the policy of OMEGA to comply with all worldwide safety and EMC/EMI regulations that apply. OMEGA is constantly pursuing certification of its products to the European New Approach Directives. OMEGA will add the CE mark to every appropriate device upon certification.

The information contained in this document is believed to be correct but OMEGA Engineering, Inc. accepts no liability for any errors it contains, and reserves the right to alter specifications without notice.

WARNING: These products are not designed for use in, and should not be used for, patient connected applications.