



# User's Guide

## iServer<sup>®</sup>

### Industrial MicroServer<sup>™</sup> EIS-2B

#### Operator's Manual

**Shop on line at**

**omega.com<sup>®</sup>**

Ω OMEGA<sup>®</sup>

[www.omega.com](http://www.omega.com)

e-mail: [info@omega.com](mailto:info@omega.com)

iSeries info:

[www.omega.com/specs/iseries](http://www.omega.com/specs/iseries)





<b>OMEGAnet® On-Line Service</b> <b>www.omega.com</b>	<b>Internet e-mail</b> <b>info@omega.com</b>
--	---

### **Servicing North America:**

**USA:**

ISO 9001 Certified

One Omega Drive, P.O. Box 4047

Stamford CT 06907-0047

TEL: (203) 359-1660

FAX: (203) 359-7700

e-mail: info@omega.com

**Canada:**

976 Bergar

Laval (Quebec) H7L 5A1

TEL: (514) 856-6928

FAX: (514) 856-6886

e-mail: info@omega.ca

### **For immediate technical or application assistance:**

**USA and Canada:**

Sales Service: 1-800-826-6342 / 1-800-TC-OMEGA®

Customer Service: 1-800-622-2378 / 1-800-622-BEST®

Engineering Service: 1-800-872-9436 / 1-800-USA-WHEN®

**Mexico and**

**Latin America:**

TEL: (001)800-TC-OMEGA®

FAX: (001) 203-359-7807

En Español: (001) 203-359-7803

e-mail: espanol@omega.com

### **Servicing Europe:**

**Benelux:**

Postbus 8034, 1180 LA Amstelveen, The Netherlands

TEL: +31 20 3472121

FAX: +31 20 6434643

Toll Free in Benelux: 0800 0993344

e-mail: sales@omegaeng.nl

**Czech Republic:**

Frystatska 184, 733 01 Karviná

TEL: +420 59 6311899

FAX: +420 59 6311114

e-mail: info@omegashop.cz

**France:**

11, rue Jacques Cartier, 78280 Guyancourt

TEL: +33 1 61 37 29 00

FAX: +33 1 30 57 54 27

Toll Free in France: 0800 466 342

e-mail: sales@omega.fr

**Germany/Austria:**

Daimlerstrasse 26, D-75392 Deckenpfronn, Germany

TEL: +49 7056 9398-0

FAX: +49 7056 9398-29

Toll Free in Germany: 0800 639 7678

e-mail: info@omega.de

**United Kingdom:**

ISO 9002 Certified

One Omega Drive

River Bend Technology Centre

Northbank, Irlam Manchester M44 5BD United Kingdom

TEL: +44 161 777 6611

FAX: +44 161 777 6622

Toll Free in England: 0800 488 488

e-mail: sales@omega.co.uk

It is the policy of OMEGA to comply with all worldwide safety and EMC/EMI regulations that apply. OMEGA is constantly pursuing certification of its products to the European New Approach Directives. OMEGA will add the CE mark to every appropriate device upon certification.

The information contained in this document is believed to be correct, but OMEGA Engineering, Inc. accepts no liability for any errors it contains, and reserves the right to alter specifications without notice.

**WARNING:** These products are not designed for use in, and should not be used for, patient-connected applications.



This device is marked with the international caution symbol. It is important to read the Setup Guide before installing or commissioning this device as the guide contains important information relating to safety and EMC.

# TABLE OF CONTENTS

Part 1: Introduction	2
1.1 Safety and EMC Considerations	2
1.2 Before You Begin	2
1.3 Description	3
Part 2: Hardware	4
2.1a Mounting on a DIN Rail	4
2.1b Removal from a DIN Rail	4
2.2 DIP Switches	5
2.3 Parts of iServer Unit	5
2.4 Serial Communication Interfaces	6
2.4.1 Wiring RS232 Interface	7
2.4.2 Wiring RS485 Interface	8
2.5 Network Communication Interfaces	8
2.5.1 10Base-T RJ-45 Pinout	8
2.5.2 10Base-T Crossover Wiring	8
Part 3: Network Configuration	7
3.1 Network Protocols	9
3.2 Ethernet (MAC) Address	9
3.3 DHCP	10
3.4 DNS	10
3.5 IP Address	11
3.5.1 Default IP Address	11
3.6 Port Number	11
Part 4: Operations	12
4.1 iCONNECT Software	13
4.2 Setup and Operation using the iServer Web Page	14
4.2.1 Read Devices	15
4.2.2 Send Raw Command	15
4.2.3 Modify Device List Entry	16
4.2.4 Configuration	17
4.2.5 Configure Access Control	19
4.2.6 Change ID	20
4.3 Setting a New IP Address using the Serial Port	21
4.4 Setting a New IP Address over the Network	23
4.5 Terminal Server Function	24
4.6 Telnet Setup	25
4.7 HTTPGET Program	27
4.8 ARP Protocol	28
4.9 Remote Access (Tunneling)	29
4.9.1 Remote iServer	30
4.9.2 Local iServer	31
4.9.2 Tunneling Troubleshooting	32
4.10 iPORT, COM Port Redirector	32
4.10.1 Overview	32
4.10.2 Configurations	33
4.11 Mail Notifier Software	35
4.11.1 Installation	35
4.11.2 Program Options Setup and Configuration	36
4.11.3 Device Setting Setup and Configuration	37
Part 5: Specifications	38
Part 6: Factory Preset Values	39
Appendix A Glossary	40
Appendix B IP Address	41
Appendix C IP Netmask	42
Appendix D ASCII Chart	43
ASCII Chart Control Codes	44
Part 7: Approvals Information	
7.1 Electromagnetic Compatibility (EMC)	45
7.2 FCC	45

## LIST OF FIGURES:

Figure 1.1	Accessing devices over the Ethernet .....	3
Figure 2.1a	Mounting .....	4
Figure 2.1b	Removal .....	4
Figure 2.2	DIP Switches .....	5
Figure 2.3	Parts of iServer Unit .....	5
Figure 2.4	DB9 Connector .....	6
Figure 2.5	Multi-point, Half-Duplex RS485 Wiring .....	7
Figure 2.6	RJ45 Pinout .....	8
Figure 2.7	10Base-T Crossover Cable Wiring .....	8
Figure 3.1	Labeling .....	9
Figure 3.2	DIP Switch on Bottom Side of Case .....	10
Figure 4.1	Pinging eis03ec MS-DOS Prompt .....	12
Figure 4.2	Assigning an IP Address using iCONNECT .....	13
Figure 4.3	Accessing the iServer for Configuration .....	13
Figure 4.4	Device Type Menu .....	14
Figure 4.5	iServer Home Page Menu .....	14
Figure 4.6	Read Devices Menu .....	15
Figure 4.7	Login Password .....	15
Figure 4.8	Serial Device Query Menu .....	15
Figure 4.9	Device Setup Menu .....	16
Figure 4.10	Modify Device List Menu .....	16
Figure 4.11	Configuration Menu .....	17
Figure 4.12	Access Control Menu .....	19
Figure 4.13	Change ID Menu .....	21
Figure 4.14	DIP Switch #1 shown in "ON" Position .....	21
Figure 4.15	Setting the IP address via the Serial Port .....	21
Figure 4.16	Pinging 128.100.101.70 from the MS-DOS Prompt .....	22
Figure 4.17	Access Control Menu .....	23
Figure 4.18	Terminal Server Configuration .....	24
Figure 4.19	Tera Term Telnet Connection Screen .....	25
Figure 4.20	Telnet Setup Menu - iServer Configuration Page .....	25
Figure 4.21	Telnet Setup Menu - iServer Help Page .....	26
Figure 4.22	ARP Commands and Responses .....	28
Figure 4.23	Serial Tunneling .....	29
Figure 4.24	Device-to-Device Communication .....	29
Figure 4.25	Configuration Menu - Remote iServer .....	30
Figure 4.26	Configuration Menu - Local iServer .....	31
Figure 4.27	iPORT Main Window .....	32
Figure 4.28	Redirect Serial Connection .....	32
Figure 4.29	iPORT Main Window .....	34
Figure 4.30	COM Port Window .....	34
Figure 4.31	iServer Mail Notifier Main Window .....	35
Figure 4.32	iServer Mail Notifier Profile Setup .....	36
Figure 4.33	iServer Mail Notifier Device Setting .....	37

## LIST OF TABLES:

Table 2.1	Parts of iServer Unit .....	5
Table 2.2	Communication Interfaces - RS232 and RS485 .....	6
Table 2.3	Signals and Directions of DB9 .....	6
Table 2.4	RS485 Half-Duplex Hookup .....	7

## NOTES, WARNINGS and CAUTIONS

Information that is especially important to note is identified by following labels:

- **NOTE**
- **WARNING or CAUTION**
- **IMPORTANT**
- **TIP**



**NOTE:** Provides you with information that is important to successfully setup and use the iServer.



**CAUTION or WARNING:** Tells you about the risk of electrical shock.



**CAUTION, WARNING or IMPORTANT:** Tells you of circumstances or practices that can effect the instrument's functionality and must refer to accompanying documents.



**TIP:** Provides you helpful hints.

## **PART 1 INTRODUCTION**

### **1.1 Safety and EMC Considerations**

Refer to the CE Approvals Section.

#### **EMC Considerations**

- Whenever EMC is an issue, always use shielded cables.
- Never run signal and power wires in the same conduit.
- Use signal wire connections with twisted-pair cables.
- Install Ferrite Bead(s) on signal wires close to the instrument if EMC problems persist.

**Failure to follow all instructions and warnings may result in injury!**

### **1.2 Before You Begin**

#### **Inspecting Your Shipment:**

Remove the packing slip and verify that you have received everything listed. Inspect the container and equipment for signs of damage as soon as you receive the shipment. Note any evidence of rough handling in transit. Immediately report any damage to the shipping agent. The carrier will not honor damage claims unless all shipping material is saved for inspection. After examining and removing the contents, save the packing material and carton in the event reshipment is necessary.

#### **Customer Service:**

If you need assistance, please contact the Customer Service Department nearest you.

#### **Manuals, Software:**

The latest operator's manual as well as free iServer configuration software (iCONNECT) and iServer Mail Notifier software are available at the **WEB site listed on the cover page of this manual. They may also be on the CD-ROM enclosed with your shipment.**

### 1.3 Description

The iServer is a stand alone Ethernet Server designed to connect devices with serial interfaces to the Ethernet network using the TCP/IP protocol. It contains Ethernet and RS-232/485/422 interfaces.

The standard features include:

- Use standard Web Browser , TCP connection, HTTPGET DOS program or Telnet Simulation, for network connectivity.
- Install via RS-232/485/422 serial port connection.
- Transfer data from RS-232/485/422 serial interface to TCP/IP using built-in socket server.
- Use a standard home page or customize Web page for OEM applications.

**Note** This device can be purchased as a stand alone DIN Rail mounted unit, or as a bench/wall mount unit.

The following example illustrates how you can hookup the devices with serial interface on the network using the iServer:

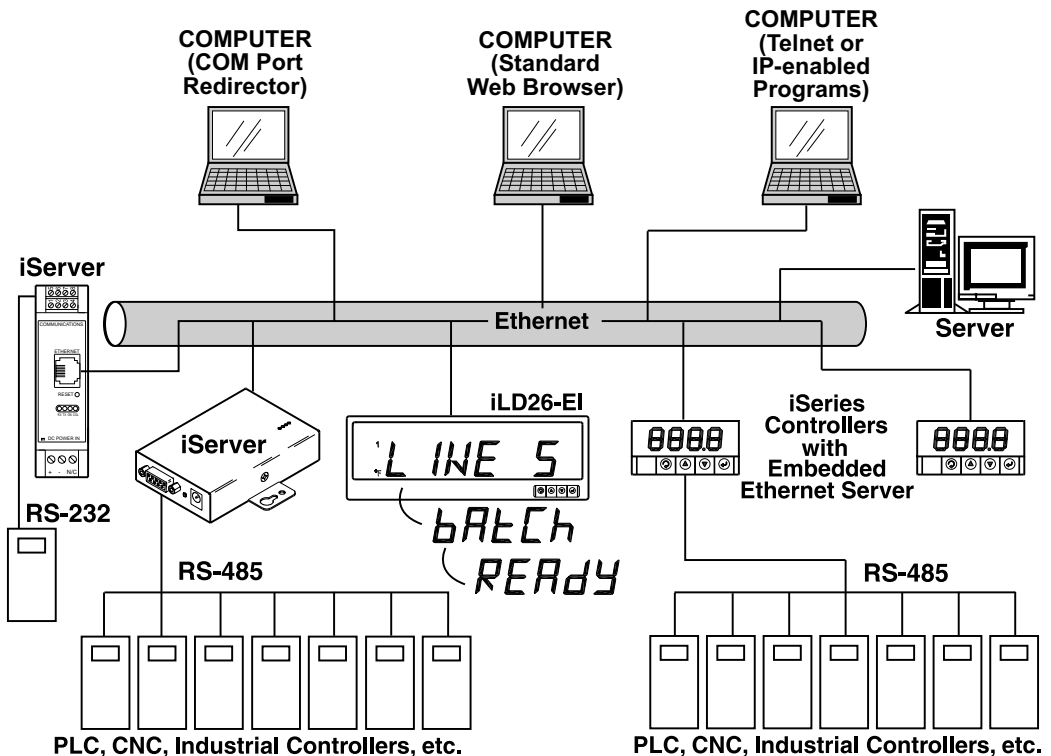


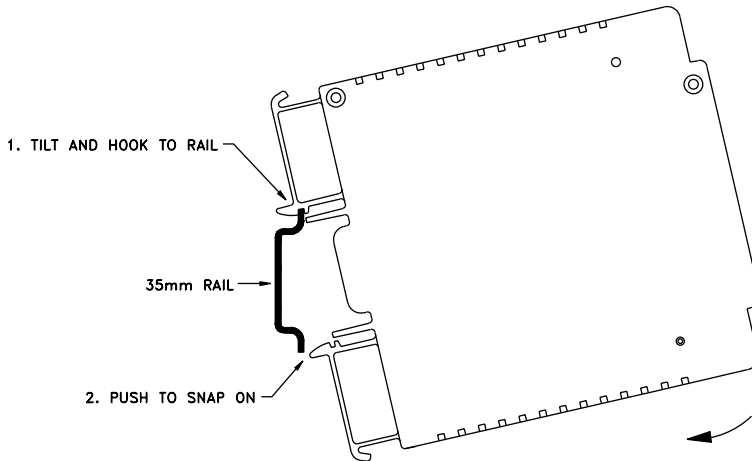
Figure 1.1 Accessing devices over the Ethernet

## PART 2 HARDWARE

### 2.1a Mounting on a DIN Rail

To install unit onto DIN Rail:

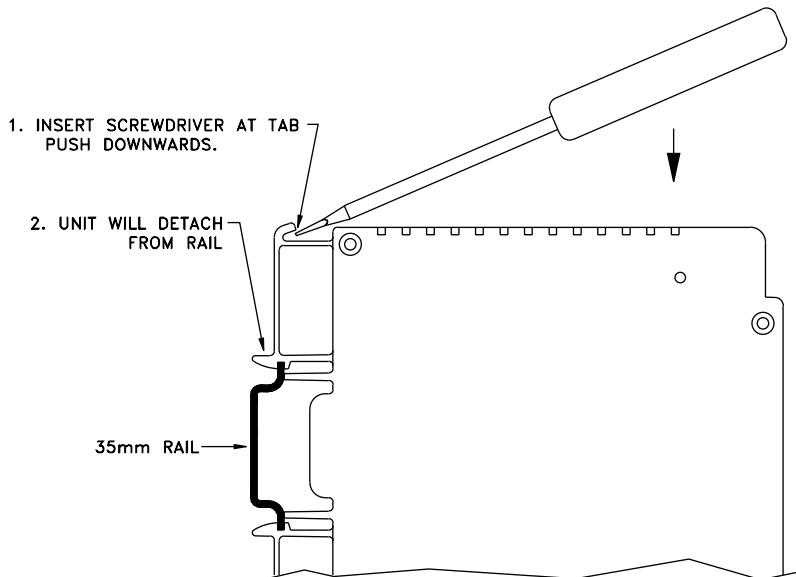
- a) Tilt unit, position mounting slot onto DIN Rail, as shown.
- b) Push unit towards DIN Rail and it will snap into place.



**Figure 2.1a Mounting**

### 2.1b Removal from a DIN Rail

- a) Insert flat screw-driver into tab and push downwards.
- b) Unit will detach from DIN Rail.



**Figure 2.1b Removal**



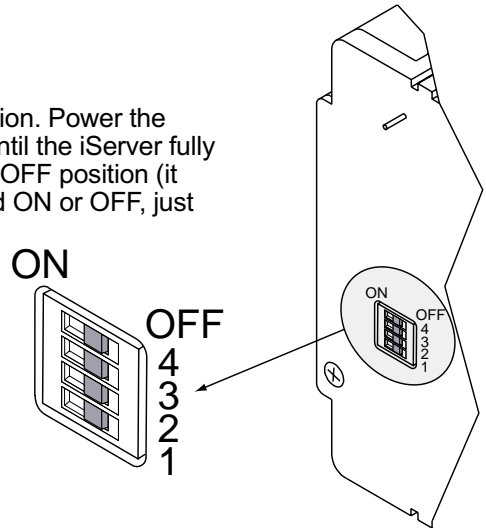
## 2.2 DIP Switches

- 1 To change the IP address, gateway address, and subnet mask from the serial port
- 2 To change to default factory settings
- 3 To enable/disable DHCP
- 4 To enable/disable Terminal Server function

**Note** To set the iServer to factory default settings, slide DIP switch #2 to ON position. Power the iServer on and wait about 10 seconds until the iServer fully boots up. Set the DIP switch #2 back to OFF position (it does not matter if the iServer is powered ON or OFF, just make sure that the DIP switch is set to OFF, otherwise, every time the unit is power-cycled the factory settings will take over. See **Section 4.6** for setting the iServer to factory default using the firmware (over the LAN).

**Note** To enable the DHCP, besides using DIP switch #3, set the iServer's IP address to 0.0.0.0. An iServer with IP address of 0.0.0.0 will request an IP address, gateway address, and subnet mask from the DHCP server over the Ethernet.

**Note** The iServer is shipped with all DIP switches in "OFF" position

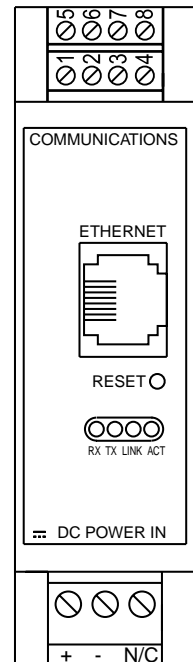


**Figure 2.2 DIP Switches**

## 2.3 Parts of the iServer Unit

**Table 2.1 Parts of iServer Unit**

<b>SERIAL COMMUNICATIONS</b>	Screw Terminal Block for RS-232 / RS-485 / RS-422 connections.
<b>ETHERNET</b>	RJ45 interface for 10BASE-T connection.
<b>RESET</b>	Button: Used for power resetting the iServer.
<b>ACT</b>	LED (Red) Blinking: Indicates network activities (receiving or sending packets).
<b>LINK</b>	LED (Green) Solid: Indicates good network link.
<b>TX</b>	LED (Yellow) Blinking: Indicates transmitting data to the serial port.
<b>RX</b>	LED (Green) Blinking: Indicates receiving data on the serial port.
<b>DC Power Supply Section:</b>	
+	Plus power supply wire connection
-	Minus power supply wire connection



**Figure 2.3 Parts of the iServer Unit**

## 2.4 Serial Communication Interfaces

Two communication interfaces are supported in the iServer: RS232 and RS-485. These standards define the electrical characteristics of a communication network. The RS485 port of the iServer is fully compatible to use with RS-485 and RS-422 instruments. The RS485 is an extended version of the RS422 communication standard which increases the allowable number of devices from 10 to 32 by improving the electrical characteristics.

- The **RS232** standard (point-to-point) allows a single device to be connected to an iServer. The iServer operates with full-duplex RS232 using seven wires: Rx-receive, Tx-transmit, DTR, DCD, CTS, RTS and common ground wires. RS232 cable length is limited to 50 feet.
- The **RS485** standard (multi-point) allows one or more devices (multi-dropped) to be connected to the iServer using a two-wire connection (half-duplex) +Rx/+Tx and -Rx/-Tx. Use of RS485 communications allows up to 31 devices to connect to the iServer with cable length up to 4000 feet long.

**Note** Although the RS485 is commonly referred to as a "two wire" connection, the iServer also provides a ground/return shield connection to use as a common connection for EMI noise protection.

**Table 2.2** shows the differences between RS232 and RS485 communication interfaces.

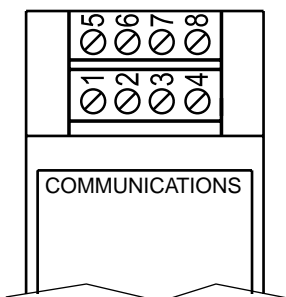
**Table 2.2**

Data Transmission Characteristics	RS232	RS485
Transmission Mode	Single ended	Differential
Electrical connections	7 wire	2 wire
Drivers per line	1 driver	32 drivers
Receivers per line	1 receiver	32 receiver
Maximum cable length	50 ft (15 meters)	4000 ft (1200 meters)

**Note** Changing between RS232 and RS485 interfaces, as well as modifying the other parameters is possible through the iServer firmware using its home Web page or Telnet connection (see **Part 4** for details).

### 2.4.1 Wiring RS232 Interface

**Table 2.3** shows the signals and the direction of signals on the Screw Terminal Block connector.



**Figure 2.4 Serial Connector**

Pin #	Signal	Direction
1	N/C	--
2	GND	--
3	Rx	IN
4	Tx	OUT
*5	DCD	IN
*6	RTS	OUT
*7	DTR	OUT
*8	CTS	IN

\* These 4 pins can also be used as digital input/output signals (firmware selection).

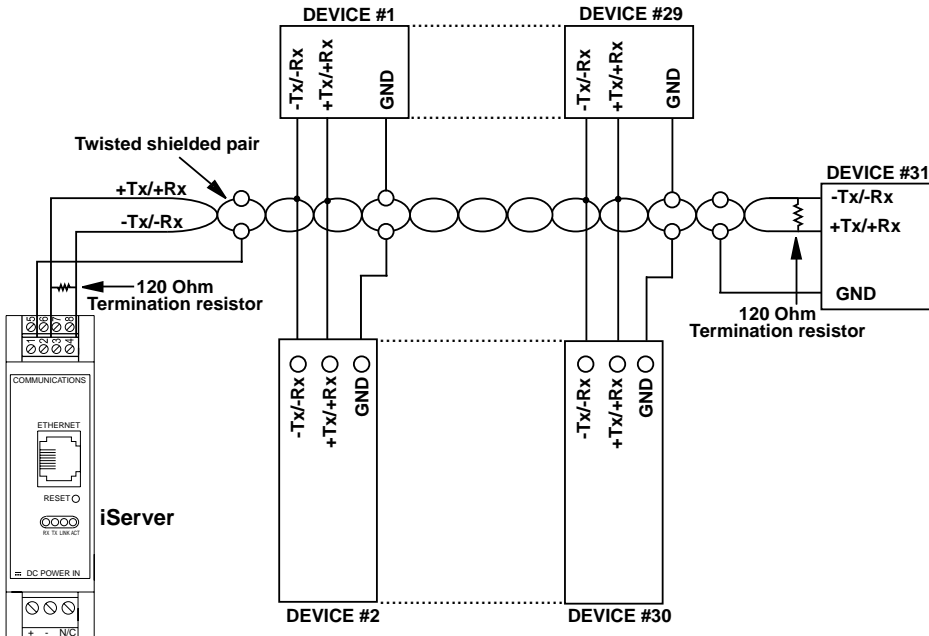
**Table 2.3**

## 2.4.2 Wiring RS485 Interface

RS485 interface uses a two-wire communication system (one for transmitting and one for receiving) plus a common wire to connect to the shield of the cable. It is recommended to use a shielded cable with one twisted pair.

**Note** Use of twisted pair and shield will significantly improve noise immunity.

**Figure 2.5** shows multi-point, half-duplex RS485 interface connections for the iServer.



**Figure 2.5 Multi-point, Half-Duplex RS485 Wiring**

Value of the termination resistor is not critical and depends on the cable impedance.

**Note** **Table 2.4** shows RS485 half-duplex hookup between the iServer serial port and device with RS485 communication interface.

**Table 2.4**

Pin#	iServer	DEVICE WITH RS485
3	+Tx/+Rx (+Transmit/+Receive)	+Tx/+Rx (+Transmit/+Receive)
4	-Tx/-Rx (-Transmit/-Receive)	-Tx/-Rx (-Transmit/-Receive)
2	RTN (Common GND)	GND (Common GND)

2.5 Network Communication Interfaces

2.5.1 10Base-T RJ-45 Pinout

The 10BASE-T Ethernet network (RJ-45) system is used in the iServer for network connectivity. The 10 Mbps twisted-pair Ethernet system operates over two pairs of wires. One pair is used for receiving data signals and the other pair is used for transmitting data signals. This means that four pins of the eight-pin connector are used.

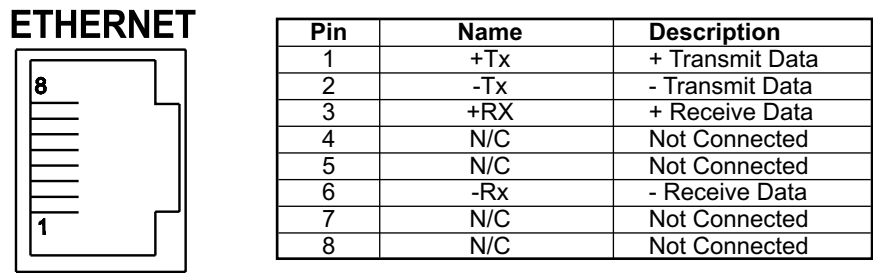


Figure 2.6 RJ45 Pinout

2.5.2 10Base-T Crossover Wiring

When connecting the iServer directly to the computer, the transmit data pins of the computer should be wired to the receive data pins of the iServer, and vice versa. The 10Base-T crossover cable with pin connection assignments are shown on **Figure 2.7**.

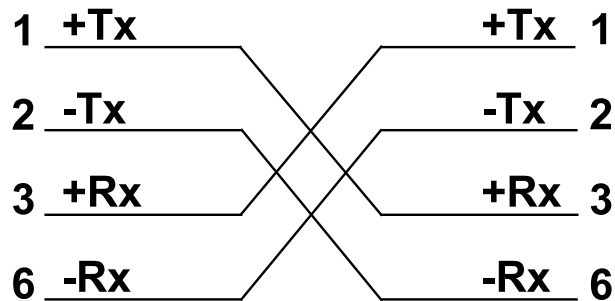


Figure 2.7 10Base-T Crossover Cable Wiring



Use straight through cable for connecting the iServer to an Ethernet hub. The ports on the hub are already crossed.

## PART 3

# NETWORK CONFIGURATION

### 3.1 Network Protocols

The iServer can be connected to the network using standard TCP/IP protocols. It also supports ARP, HTTP (WEB server), DHCP, DNS and Telnet protocols.

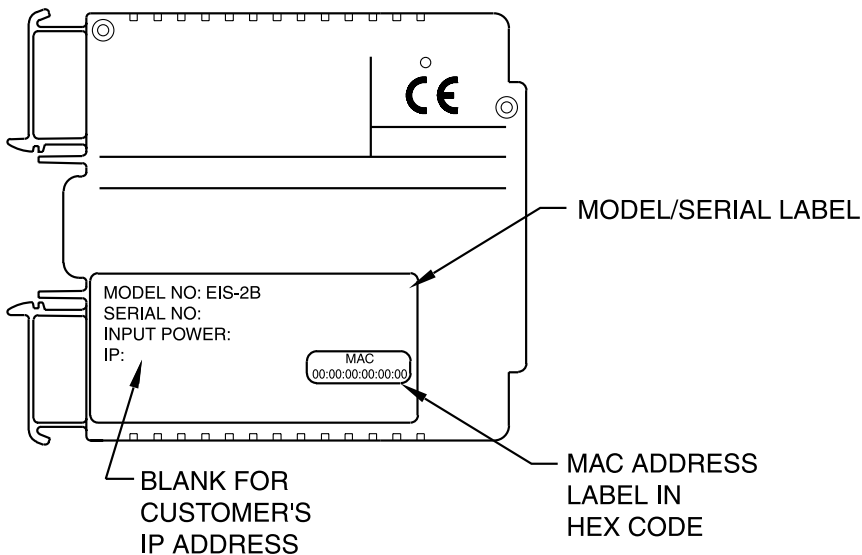
### 3.2 Ethernet (MAC) Address

MAC (Media Access Control) address is your computer's unique hardware number. When you're connected to the LAN from your computer, a correspondence table relates your IP address to your computer's physical (MAC) address. The MAC address can be found on the label of your device and contains 6 bytes (12 characters) of hexadecimal numbers XX:XX:XX:XX:XX:XX hex

For example: 0A:0C:3D:0B:0A:0B



There is room on the label to put your IP address. See **Figure 3.1**



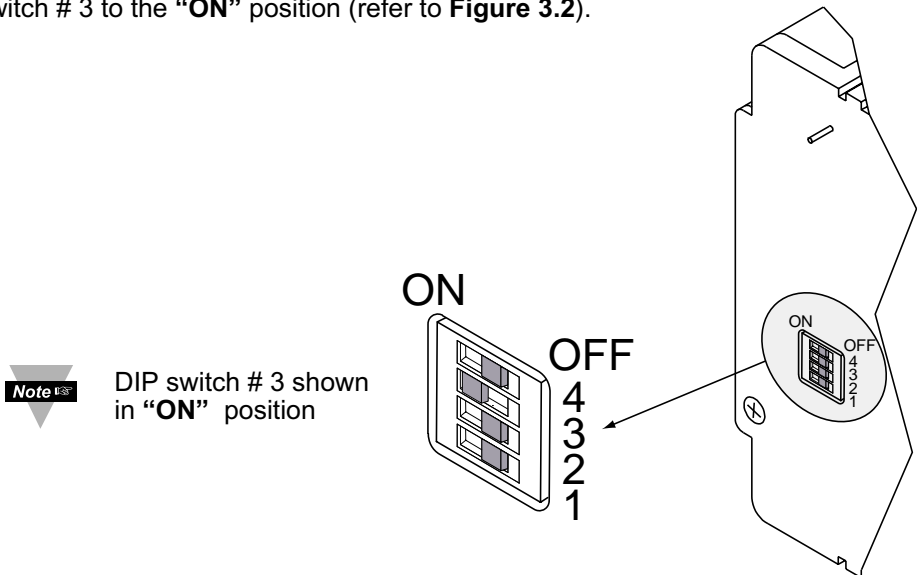
**Figure 3.1 Labeling**

### 3.3 DHCP

DHCP, Dynamic Host Configuration Protocol enables individual computers or devices to extract their IP configurations from a server (DHCP server). If the DHCP is enabled on your iServer, as soon as the iServer is connected to the network, there is an exchange of information between DHCP server and the iServer. During this process the IP address, the Gateway address, and the Subnet Mask will be assigned to the iServer by the DHCP server. Note that the DHCP server must be correctly configured to make such assignment.

The DHCP can also be enabled if the iServer's IP address is set to 0.0.0.0.

If fixed or static IP address is desired, the DHCP must be disabled. The iServer is shipped with DHCP disabled (factory default). The DHCP can be enabled by setting the DIP switch # 3 to the "ON" position (refer to **Figure 3.2**).



**Figure 3.2 DIP Switch on the Bottom Side of iServer**

### 3.4 DNS

DNS, Domain Name System enables individual computers and devices to be recognized over a network based on a specific name instead of an IP address. For example, instead of having to use **<http://128.100.101.254>** (IP address), you would use only **<http://eis03ec>** or any eight character name stored as Host Name under Access Control menu in the iServer Home Page. The default DNS name for an iServer is "eis" followed by the last four digits of the MAC address of that particular iServer.

- Note**
1. It is very important to communicate with the network administrator in order to understand the DHCP and its existing configurations on the host server, before enabling the DHCP on the iServer.
  2. The iServers are shipped with a default static IP address of **128.100.101.254** and Subnet Mask of **255.255.0.0**.
  3. On Novell networks or Windows 2000 where the DCHP is an updated function of DNS this feature may be beneficial since a particular name can be assigned eliminating the need for the IP address, as described in **Section 3.4**.

### 3.5 IP Address

Every active device connected to the TCP/IP network must have a unique IP address. This IP address is used to build a connection to the iServer's serial port. Every computer using TCP/IP should have a unique 32-bit address. It is divided into two portions, the network ID and the host ID. For instance, every computer on the same network uses the same network ID. At the same time, all of them have a different host ID. For more details about the IP address see **Appendix B**.

#### 3.5.1 Default IP Address

The iServer is shipped with a default IP address set to **128.100.101.254** and Subnet Mask of **255.255.0.0**. If you are going to use a Web browser or Telnet program to access the iServer using its default IP address, make sure that the PC from which you're establishing the connection has an IP address that is in the same range as the iServer's IP address (**128.100.x.x**, where **x** can be any number from 1 to 254. Note that your PC's IP address cannot be the same as the iServer's IP address). You also need to make sure that your PC's Subnet Mask is **255.255.0.0**. This is a good way to access the iServer over the network and make any configuration changes needed. If the factory default address is already in use on your network, use an Ethernet crossover cable between your computer and the iServer and modify the IP address or any other settings within the iServer.

### 3.6 Port Number

All TCP connections are defined by the IP address and a port number. A port number is an internal address that provides an interface between an application running on your computer and the network through the TCP/IP protocol.

There are three default TCP port (socket) numbers assigned to the iServer:

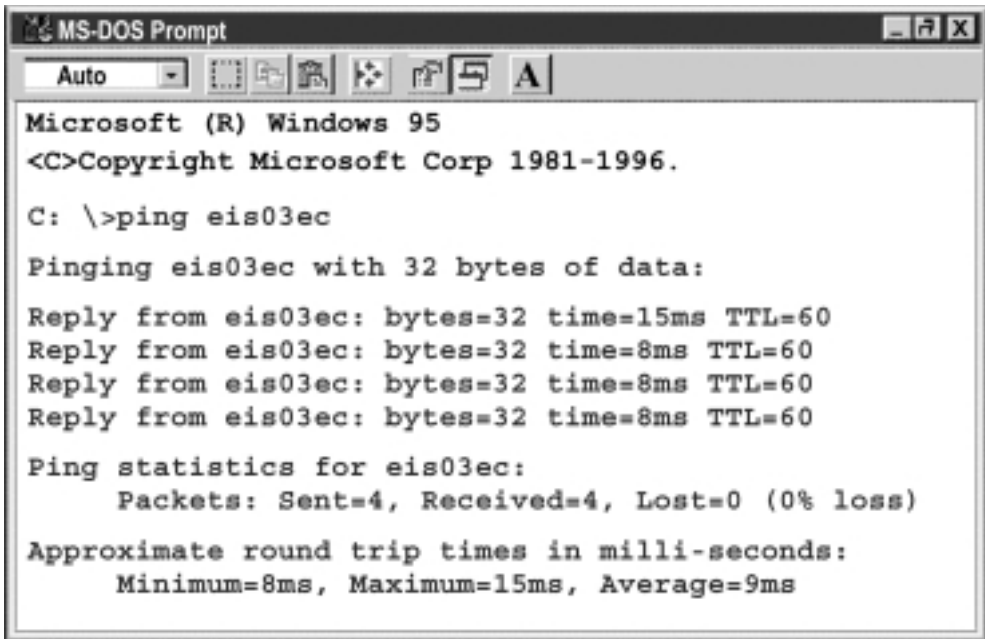
1. Port (socket) number 1000 when using HTTPGET program.
2. Port (socket) number 2000 when trying to access your serial device connected to the serial port of the iServer.
3. Port (socket) number 2002 when trying to access the iServer itself for reading or changing the settings. This can be done using Telnet application.

Example: C:\>Telnet 128.100.101.254 2002

## PART 4 OPERATIONS

This iServer can be used and configured in several ways, depending on user's preference and network setup. It can be used in Telnet simulation mode where it emulates serial communication operation over a network cable or directly from a Web browser, like Netscape or Internet Explorer.

If DHCP and DNS servers are used, the connection is very simple, you do not need to worry about IP address, MAC address, or network conflicts, all of these issues are resolved for you by your network DHCP and DNS server. All that is left for you to do, is to use a straight/normal network cable to connect the device to a hub and power it up. Then you can go to your computer that is connected over the same network and from the MS-DOS Prompt window type "**ping eisxxxx**" followed by the last four digits from the MAC address located on the side or back of the device.



```
MS-DOS Prompt
Auto
Microsoft (R) Windows 95
<C>Copyright Microsoft Corp 1981-1996.
C: \>ping eis03ec
Pinging eis03ec with 32 bytes of data:
Reply from eis03ec: bytes=32 time=15ms TTL=60
Reply from eis03ec: bytes=32 time=8ms TTL=60
Reply from eis03ec: bytes=32 time=8ms TTL=60
Reply from eis03ec: bytes=32 time=8ms TTL=60
Ping statistics for eis03ec:
    Packets: Sent=4, Received=4, Lost=0 (0% loss)
Approximate round trip times in milli-seconds:
    Minimum=8ms, Maximum=15ms, Average=9ms
```

**Figure 4.1 Pinging eis03ec MS-DOS Prompt**

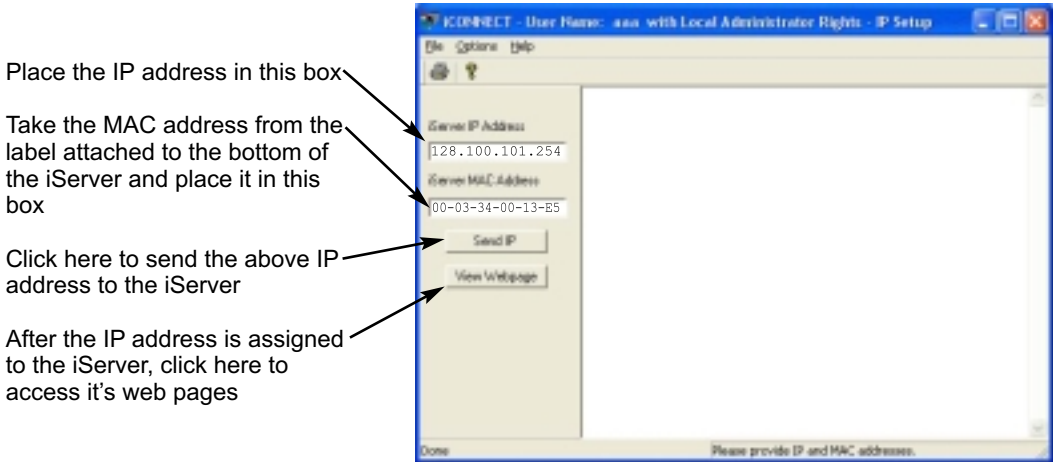
This proves that the connection is proper and you can get into configuration or run mode using the Telnet or Web browser.



## 4.1 iCONNECT Software

The iServer may also be assigned an IP Address by using the iCONNECT software.

- Download the iCONNECT software from the website listed in this manual.
- Install iCONNECT software on a networked PC. This software is compatible with Windows 95, 98, NT, 2000, and XP.
- Use iCONNECT to assign an IP address to the iServer and access its web pages for configuration. You can also use any standard web browser to access the iServer's web pages. Consult with your IT department for obtaining an IP address.



**Figure 4.2 Assigning an IP Address using iCONNECT**

To access the iServer for Configuration.

- By clicking on the "View Webpage" button, you will access the iServer's main web page.
- Click on the "Update" button to enter the main menu.
- For information configuring the iServer, refer to **Sections 4.2.4** and **4.2.5**.



**Figure 4.3 Accessing the iServer for Configuration**

## 4.2 Setup and Operation Using the iServer Web Page

Besides the iCONNECT software, you can use any standard web browser to access the iServer's web pages.

- a) Start your web browser.
- b) From the browser you type **http://eisxxxx** using the last four-digits from the MAC address label located on the device if DHCP and DNS are used. If a static IP address is used, then simply type **http://x.x.x.x**, where **x.x.x.x** is the iServer's IP address.
- c) The Home Page, shown below, will be displayed.



**Figure 4.4 Device Type Menu**

- d) From the drop-down window you can select the type of device connected (i-Server, iDRN, iDRX, i-Series, INFB, iR2, or iLD) then press Update to get to the Home Page.



**Figure 4.5 iServer Home Page Menu**

**Note**

In order to access certain menu items of the Home Page, users may be prompted with passwords. More details given in later sections.

### 4.2.1 Read Devices

- Read variables from up to eight different devices.

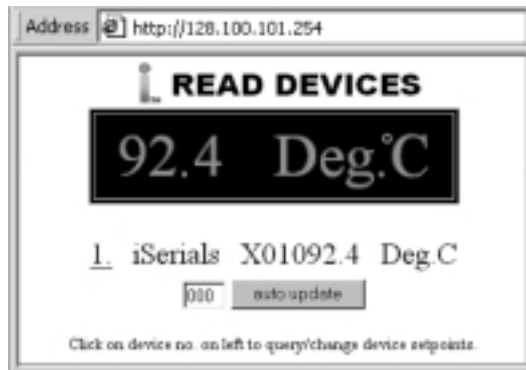


Figure 4.6 Read Devices Menu

- Read up to eight variables from the same device.
- Manually or automatically update readings from your devices. Set time interval for Auto Update.
- Read and write the setpoint values to the device.

**Note** Changing Device Setup helps you to see eight different variables or devices by "Check" box.

**Note** If access to the menu item is restricted, the user will be prompted for a password. In order to proceed to the "Device Setpoints" submenu, the user should enter the correct password for access Login (default password is **12345678**) or access Admin (default password is **00000000**).

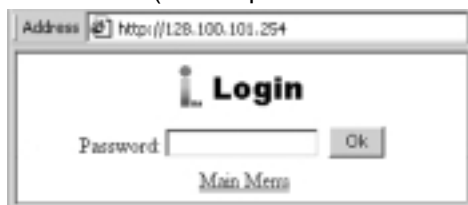


Figure 4.7 Login Password

### 4.2.2 Send Raw Command

- Send single command and receive response.

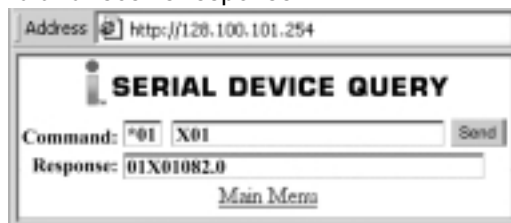


Figure 4.8 Serial Device Query Menu

### 4.2.3 Modify Device List Entry

- Up to four different devices or parameters can be modified.

**Note** Device Address or ID is in Hex format. See **Appendix D** for conversion.

No.	Check	Device Name	Address	Reading	SP1	SP2	SP3	SP4	Display Units	Display Format
1	<input checked="" type="checkbox"/>	iSeries	*01	2001	R01	R01	R01	R01	Deg.C	decimal
2	<input type="checkbox"/>	ABCDEF GH	*01	2001	R01	R01	R01	R01	ABCDEF GH	raw
3	<input type="checkbox"/>	ABCDEF GH	*01	2001	R01	R01	R01	R01	ABCDEF GH	raw
4	<input type="checkbox"/>	ABCDEF GH	*01	2001	R01	R01	R01	R01	ABCDEF GH	raw
5	<input type="checkbox"/>	ABCDEF GH	*01	2001	R01	R01	R01	R01	ABCDEF GH	raw
6	<input type="checkbox"/>	ABCDEF GH	*01	2001	R01	R01	R01	R01	ABCDEF GH	raw
7	<input type="checkbox"/>	ABCDEF GH	*01	2001	R01	R01	R01	R01	ABCDEF GH	raw
8	<input type="checkbox"/>	ABCDEF GH	*01	2001	R01	R01	R01	R01	ABCDEF GH	raw

Update Checked Box

Take Readings

Click on device no. on left to modify device parameters.

Figure 4.9 Device Setup Menu

- Modify device list or parameters.

Address http://128.100.101.254

### MODIFY DEVICE LIST ENTRY

Device No. 1

Device Address:

Device Name:

Reading Command:

SP1 Command:

SP2 Command:

SP3 Command:

SP4 Command:

Display Units:

Display Format:

Update Reset

Cancel

Figure 4.10 Modify Device List Menu

## 4.2.4 Configuration

This section describes the "Configuration" page of the iServers's Web interface.

To get into the Configuration page, the user will be prompted with a Login Password. The default Login password is **12345678** and is changeable, if desired.

When connecting your serial device to the iServer, the Serial Communications parameters (baud rate, data bit, parity, and stop bit) must be the same on both, the iServer and your serial device.

Address http://128.100.101.254

### CONFIGURATION

#### Serial Communication

Baud Rate  Data Bits  Parity  Stop Bits

Flow Control  Transceiver  Modbus/TCP

End Character (Hex)  Forward End Char  Timeout  msec

Serial Port Password

#### Terminal Server

TCP/UDP  Server Type  Number of Connections  Local Port

Connection Control  Connection Timeout  X 10 msec

#### Remote Access (Tunneling)

Remote Access  Remote IP Address  Remote Port

**Figure 4.11 Configuration Menu**

**Baud Rate:** The serial port speed can be set from 300 to 115,200 bits/s (default is 9600 bits/s.)

**Data Bit:** Options are 7 or 8 (default is 8 bits.)

**Parity:** Options are Odd, Even, and None (default is None.)

**Stop Bits:** Options are 1 and 2 bits (default is 1 bit.)

**Flow Control:** Options are Software Flow Control (Xon/Xoff), Hardware Flow Control (CTS/RTS), and None (default is None.)

**Transceiver:** The iServer's DB9 serial port can either be set to RS-232 or two-wire RS-485 (default is RS-232.)

**Modbus/TCP:** A widely used protocol mainly in industrial automation applications with default TCP port number of 502 (see Local Port field). The options are Enable and Disable. If enabled, the Modbus/TCP is the only protocol driven by the iServer on its LAN port. If disabled, the TCP/IP is the only protocol driven by the iServer on its LAN port (default is disable).

**End Character:** When the defined Hex character is received by the iServer on its serial port, the iServer will forward the buffered serial data to the Ethernet (default is Hex 0D, which is the Carriage Return). If 00 is entered, the iServer will forward the data to the Ethernet as it receives the data on its serial port (requires NO end character to forward the data.)

**Forward End Char:** If enabled, the iServer will send the End Character out to the Ethernet as part of the data. If disabled, the iServer will not count the End Character as part of the data and will drop it (default is enabled.)

**Timeout:** In RS232 connection, if the iServer does not receive any more serial data within the given time value, the iServer will forward the buffered serial data to the Ethernet. For example, if the Timeout is set to 200ms, the iServer will send out the buffered serial data to the LAN, if it does not receive any more data on its serial port for 200ms.

In RS485 connection, the Timeout value is used to switch between serial transmit and receive mode. Since the iServer supports 2-wire RS485, it needs to either transmit or receive serial data and the Timeout value determines the time interval for each. The range can be from 0 to 9999ms (default is 500ms).

**Serial Port Password:** The Telnet connection to the iServer's serial port (default port 2000) can be password protected if this option is enabled (default is disable). If enabled, the actual password can be placed in the next field.

**TCP/UDP:** The iServer supports TCP and UDP protocol (default is TCP). If UDP is selected, it can be configured either for Broadcast UDP or Directed UDP. In case of Broadcast UDP, the iServer will transmit the serial data to every node on the network. This can be accomplished if the Remote IP Address is set to 255.255.255.255.

The Broadcast UDP is a practical solution when one device needs to communicate with multiple PC's or devices over the network (one-to-many connection). In the case of directed UDP, the iServer will transmit the serial data to a specific node on the network (one-to-one connection). This can be accomplished if the Remote IP Address is set to the IP address of that specific node.

**Server Type:** In most cases the iServer will be acting as a Slave device. Slave option is chosen when a network host needs to connect to the serial port of the iServer (default is Slave).

**Number of Connections:** The range is from 0 to 5. If 0 is selected, the Terminal Server feature is disabled. This means that no network connection can be made to the serial port of the iServer. If 1 is selected, only one network connection can be made to the iServer's serial port. Any number more than 1 would allow the network hosts to monitor (read only) the traffic on the iServer's serial port simultaneously, but only one network host would be allowed to read and write (default is 0).

**Local Port:** This is the port or socket number for the iServer's serial port. Any number between 500 and 9999 can be defined with the exceptions of 1000 and 2002 which are already used by the iServer for other purposes (default is 2000.) Port number 502 is the default socket number for Modbus/TCP protocol. If Modbus/TCP is enabled in the iServer, it's then suggested to use 502 for the Local Port unless your host software that supports Modbus/TCP indicates otherwise.



If your application software is IP enabled, it means that it can open a connection to a node on the network (i.e. iServer with the attached serial device) with an IP address and a port number. In some cases the application software may not allow you to specify the iServer's port number (it only allows you to enter the iServer's IP address). In these cases, you should put 23 in the Local Port field of the iServer. By doing this, the iServer will forward connections that are made to its Ethernet port directly to its serial port.

**Connection Control:** Some serial devices accept connections or disconnect connections based on certain signal conditions. For example, a serial device may accept a connection only if the incoming DTR signal (connected to device's DSR or DCD) is high or low. In this case, when the iServer receives the TCP connection, before it forwards it to its serial port, it must raise its DTR (DTR+) or to lower its DTR (DTR-). The iServer is capable of doing this with any of the hardware or modem control signals (DTR, DSR, DCD, RTS, and CTS).

**Note** "Reconnect" is one of the options in the Connection Control menu. This option can be used in the Serial Tunneling described in **Section 4.9**. If the connection in Serial Tunneling is broken due to network problems, power failure, etc., the Reconnect option will try to get the connection back on line every whatever the "Connection Timeout" is set to. For Example, if the Connection Timeout is set to 1000 x10 ms or 10 seconds, then every 10 seconds the iServer attempts to reconnect and reestablish the serial tunnel to the other network node.

**Remote Access:** This option needs to be enabled when Serial Tunneling is configured. The Serial Tunneling is explained in detail in **Section 4.9**.

**Note** Changes made in the iServer's Configuration menu can be saved permanently by pressing the Save button. Pressing the Reset button will set all the fields back to their default values.

#### 4.2.5 Configure Access Control

This section describes the "Access Control" page of the iServers's Web interface. This page allows the users to set up the network and security parameters of the iServer.

To get into the Access Control page, the user will be prompted with an Admin Password. The default Admin password is **00000000** and is changeable, if desired.

Address http://128.100.101.254

### ACCESS CONTROL

Login Password

Admin Password

Web Server ☐

Host Name

MAC Address 00:03:34:00:13:76

IP Address

Gateway Address

Subnet Mask

**Click the following button to activate the new setting**

**Figure 4.12 Access Control Menu**

**Login Password:** This allows users to access and modify "Configuration" and "Device Setpoints" menus. The default password is 12345678. This password can be up to 16 alphanumeric case-sensitive characters. If there is no password assigned (blank box) the iServer will not require password to access and modify "Configuration" and "Device Setpoints" menus.


**Admin (administrator) Password:** This allows users to access and modify "Access Control" menu. The default password is 00000000. This password can be up to 16 alphanumeric case-sensitive characters. If there is no password assigned (blank box) the iServer will not require password to access and modify "Access Control" menu.

**Web Server:** This will allow or disallow accessing the iServer's Web server using an Internet browser (default is enabled.)

**Host Name:** Refer to **Section 3.4**, DNS.


**MAC Address:** This is also called Hardware address or Ethernet address, which is assigned to the iServer at production. The MAC (Media Access Control) address is the iServer's unique hardware number and is not changeable.

**IP Address:** The IP (Internet Protocol) address is a 32-bit number that identifies each sender or receiver of information that is sent in packets across the Ethernet or the Internet. The iServer's default IP address is 128.100.101.254. The iServer's IP address should be changed to fit user's networking environment. Consult with your IT department for obtaining an IP address.

 **Note** The DHCP will be enabled in the iServer if its IP address is set to 0.0.0.0. The DHCP can also be enabled by setting the dip switch number 3 to ON position.


**Gateway Address:** A gateway is a network point that acts as an entrance to another network. A gateway is often associated with a router, which knows where to direct a given packet of data that arrives at the gateway. If the iServer is sending packets to another network node that is not on the same network on which the iServer is connected, a gateway address needs to be given to the iServer. The gateway address should be the IP address of the router connected to the same LAN to which the iServer is connected. The iServer's default gateway address is 0.0.0.0. Consult with your IT department for obtaining a gateway address.

**Subnet Mask:** It's a 32-bit number that is used to determine which part of the IP address is the network portion and which part is the host portion. The iServer's default subnet mask is 255.255.0.0. Consult with your IT department for obtaining a subnet mask.

 **Note** Changes made in the iServer's Access Control menu can be saved permanently by pressing the Save button and power recycling the iServer (press Power Recycle button). Pressing the Reset button will set all the fields back to their default values.

## 4.2.6 Change ID

ID number relates to the Device or Variable No. Refer to Device Setup **Figure 4.9**.

 **Note** Allows the user to access devices with different addresses residing on RS485, or different variables from same device on communication interface.




**Figure 4.13 Change ID Menu**

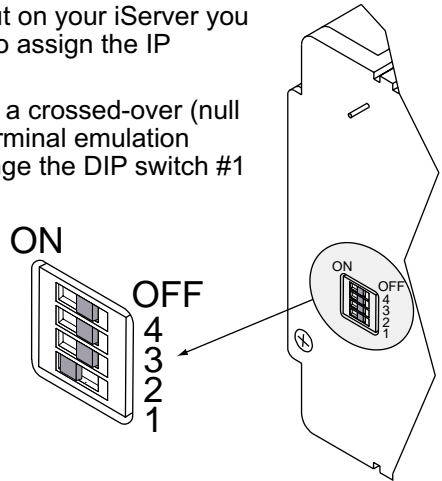


### 4.3 Setting a New IP Address using the Serial Port

Once you know the IP address that you need to put on your iServer you can use a serial connection (Terminal Emulation) to assign the IP address to the iServer.

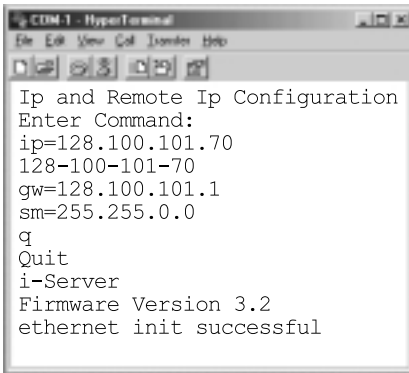
Setting the IP address over the serial port requires a crossed-over (null modem) serial cable and Hyper Terminal or any terminal emulation program. When all the connections are done, change the DIP switch #1 to **"ON"** position (**Figure 4.14**) and press the Reset button or reset the power on the iServer. The Hyper Terminal screen will acknowledge your connection by asking for the command.


**Note**  DIP switch # 1 shown in "ON" position



**Figure 4.14** DIP switch #1


Type **"IP=xxx.xxx.xxx.xxx"** and press Enter. The screen will acknowledge that your command was executed. You can also set the iServer's gateway and subnet mask by typing **"GW=xxx.xxx.xxx.xxx"** and **"SM=xxx.xxx.xxx.xxx"**, respectively. Then type **q** and press Enter (**Figure 4.15**) You can now change the DIP switch #1 back to the **"OFF"** position and reset the power on the iServer.



**Note**  You need to make sure to setup the following parameters on your terminal emulation program (i.e. Hyper Terminal)

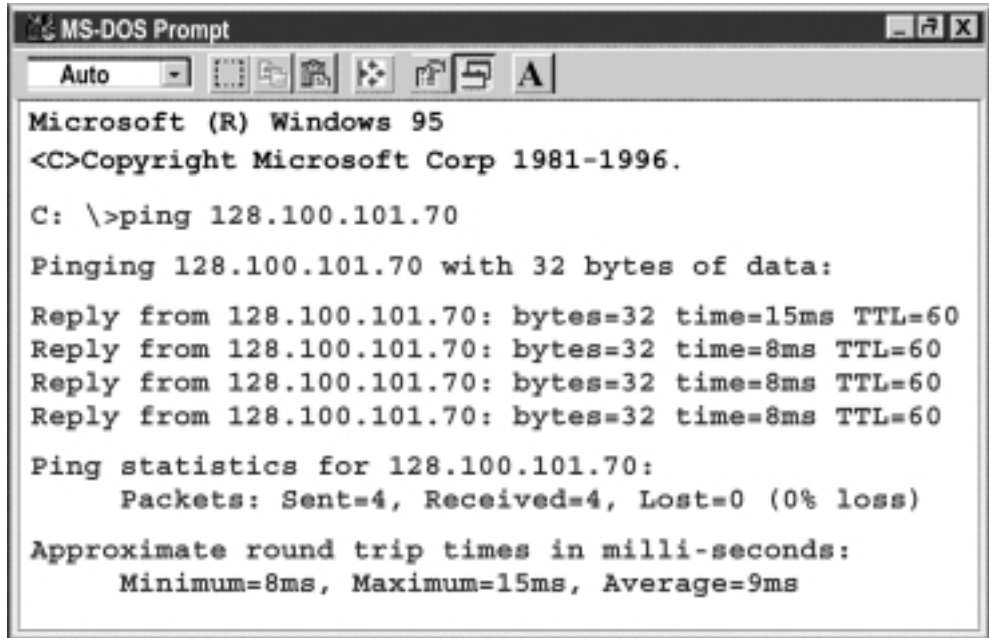
Baud Rate	- 9600 b/s
Data Bit	- 8 bits
Parity	- None
Stop Bit	- 1 bit
Flow Control	- None
Local Echo	- Enable
Line Feeds	- Enable

**Figure 4.15** Setting the IP address via the Serial Port

**Note**  You can access the iServer's complete settings by connecting the iServer's serial port to your PC's COM port using a null-modem cable. Bring up a terminal emulation program (i.e. HyperTerminal) and make sure the right COM port is selected and the serial communications settings (baud rate, character bit, stop bit, and parity) match the iServer's serial port. Power the iServer on and press the Enter key within 5 seconds of powering the iServer. The iServer will then transmit its complete configurations to the PC.

### 4.3 Setting a New IP Address using the Serial Port (continued)

All that is left for you to do, is to use a straight/normal network cable to connect the iServer to an Ethernet hub and power it up. Then you can go to your computer that is connected to the same network and from the MS-DOS-Prompt window type "**ping 128.100.101.70**" where 128.100.101.70 is the new IP address for the iServer.



```
MS-DOS Prompt
Auto
Microsoft (R) Windows 95
<C>Copyright Microsoft Corp 1981-1996.
C: \>ping 128.100.101.70
Pinging 128.100.101.70 with 32 bytes of data:
Reply from 128.100.101.70: bytes=32 time=15ms TTL=60
Reply from 128.100.101.70: bytes=32 time=8ms TTL=60
Reply from 128.100.101.70: bytes=32 time=8ms TTL=60
Reply from 128.100.101.70: bytes=32 time=8ms TTL=60
Ping statistics for 128.100.101.70:
    Packets: Sent=4, Received=4, Lost=0 (0% loss)
    Approximate round trip times in milli-seconds:
        Minimum=8ms, Maximum=15ms, Average=9ms
```

**Figure 4.16 Pinging 128.100.101.70 from the MS-DOS Prompt**

This proves that the connection is proper and you can access the iServer using the Telnet or Web browser.

#### 4.4 Setting a New IP Address over the Network

The iServer is shipped with a default IP address of **128.100.101.254** and Subnet Mask of **255.255.0.0**. You can configure your PC's Network connection with an IP address that is in the same range as the iServer's IP address (**128.100.x.x**) and connect to the iServer using a crossover network cable between your PC and the iServer.

With this completed, you can go to the DOS-Prompt and ping 128.100.101.254. If you receive responses back (**Figure 4.16**), you can go to the Web browser and type in **http://128.100.101.254** and it will take you to the Device Type page and then to the Home Page.

Select Access Control button, you'll be asked for the password. First default Login password is "**12345678**" and the Admin password is "**00000000**", then you should be on the Access Control page where you can simply type in the desired static IP address, and click Save.

Address http://128.100.101.254

## ACCESS CONTROL

Login Password

Admin Password

Web Server

Host Name

MAC Address

IP Address

Gateway Address

Subnet Mask

**Click the following button to activate the new setting**

**Figure 4.17 Access Control Menu**



For the IP address to take effect the iServer needs to be turned OFF/ON or press the Reset button.

Once all of this is done, you can connect the iServer to an Ethernet hub using a straight through cable, power it up, and follow the ping routine mentioned in the previous section.

## 4.5 Terminal Server Function

It is used to provide dedicated connectivity between computers and serial devices through the iServer over the Ethernet, without dedicated wiring. The typical Internet protocol consists of a request and a reply to that request. In this situation the server is the Host that generates the request and receives the reply from the device, that gets forwarded to the appropriate party on the network. But there are specific applications where a message is generated by the device, and the server is simply passing the data to the appropriate party on the network, in this situation the server acts as Slave. Examples are the Attendance Time Clocks, Bar Code Readers, remote Displays or Electronic signboards, etc.

For the iServer to pass the data back and forth between its Serial and Ethernet interfaces, the Terminal Server option needs to be configured as follows (**Figure 4.18**):

1. Set the Server Type to Slave
2. Set the Number of Connections to 1 or higher.
3. Set the Local Port number to any number from 599 - 9999, except numbers 1000 and 2002.
4. Press the Save button to store the new settings.

From your application software on the host machine, you can now point to the IP address of the iServer and the assigned port number to establish a TCP connection to your serial device connected to the serial port of the iServer.

Address

### CONFIGURATION

#### Serial Communication

Baud Rate  Data Bits  Parity  Stop Bits

Flow Control  Transceiver  Modbus/TCP

End Character(Hex)  Forward End Char  Timeout  msec

Serial Port Password

#### Terminal Server

TCP/UDP  Server Type  Number of Connections  Local Port

Connection Control  Connection Timeout  X 10 msec

#### Remote Access (Tunneling)

Remote Access  Remote IP Address  Remote Port

**Figure 4.18 Terminal Server Configuration**

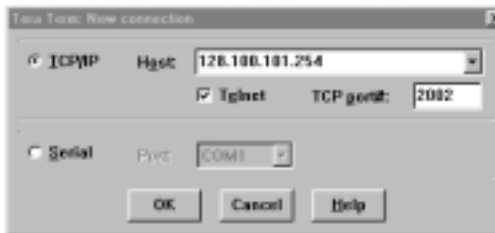
**Note**

If DIP switch #4 is “ON”, Terminal Server function is always enabled, regardless of the firmware configuration. By default, this DIP switch is set to “OFF” position. You have the option to enable the Terminal Server feature either through the firmware or the DIP switch #4.

## 4.6 Telnet Setup

Telnet stands for Telecommunications Network, is a protocol that provides a way for users (or clients) to connect to computers (or servers) on a network, whether in the next building or across the other side of the world.

You can open a Telnet session using Tera Term Pro (can be download from <http://download.cnet.com/downloads/0-10062-100-890547.html>.) Windows Operating Systems include Telnet program as well. Once the Telnet mechanism is decided we can open a session by simply typing the IP address of the iServer, and setting the Port on 2002 for logging into the iServer Configuration page or 2000 for accessing the serial device connected to the iServer's serial port.



**Figure 4.19**

**Tera Term Telnet Connection Screen**

```
Firmware Version 3.2
Admin. Password:00000000
Admin. Login Successful
Configuration
Firmware Version 3.2
BD = 9600 (5)
PT = none(0)
ST = 1 bit (0)
DT = 8 bits (1)
MD = RS-232 (0)
TO = 0500
TT = SLAVE(1)
TN = 0
HN = eis1376
IP = 128.100.1
LP = 12345678
SP = 00000000
TP = iServer(0)
RE = disable(1)
RI = 0.0.0.0
RP = 02000
GW = 0.0.0.0
SM = 255.255.0.0
EC = 0D
PP = 02000
FC = none (0)
MB = disable(0)
TU = TCP (0)
CC = not used(0)
CT = 01000
FE = enable (1)
EP = disable(1)
CP = 1234abcd
WB = enable (1)
MAC = 00:03:34:00:13:76
q
Quit
```

**Figure 4.20 Telnet Setup  
iServer Configuration Page**



The default password for Telnet Login is 00000000 and can be changed if desired. Telnet works only in RS-232 mode

## 4.6 Telnet Setup (continued)

In the Configuration mode you can make any changes just like you would do using the Web Browser. After connected to the iServer, the user can use the following commands to read, modify, and get help from the iServer console.

- ? Following with a return character, the console will show all the commands and options (**Figure 4.21**).
- p Following with a return character, the console will show the iServer configurations (**Figure 4.20**).
- s Is the configuration command, used to set a new setting (see the example in **Figure 4.21**)
- r This command is used to read the status of the digital I/O signals (0 is low and 1 is high)
  - Example:        r DCD            response will be        DCD (DSR)=0
  - r DTR            response will be        DTR=0
- w This command is used to change the status of the digital I/O signals (applies only to the outgoing signals, DTR and RTS)
  - Example :        w RTS=1        means raise the RTS
  - w DTR=0        means lower the DTR

**RESET** following with a return character, it will recycle the Power on the iServer.

**FACTORY** following with a return character, it will set the iServer to it's factory default settings.

```
Admin. Password:00000000
Admin. Login Successful
iServer Configuration Command:

s -[cc]pppppp [-[cc]ppppp]..

cc description      pppppp

BD BaudRate          0-300,1-600,2-1200,3-2400,4-4800,5-9600,6-19200,
7-38400, 8-57600, 9-115200
PT Parity             0-none,1-Odd,2-even
ST StopBits           0-1bits,1-2bits
DT DataBits           0-7bits,1-8bits
FC FlowControl        0-none,1-XON/XOFF,2-Hardware
MD Mode               0-RS232, 1-RS485
MB Modbus/TCP         0-disable, 1-enable
TO TimeOut            xxxx ms Rang range 100-9999
TU TCP/UDP            0-TCP, 1-UDP
TT TerminalType       0-Host, 1-Slave
TN TerminalNumber     0-5
PP TerminalPort       XXXXX 500-9999 but 1000
HN HostName           XXXXXXXX maxim 18 characters
IP Static IP          XXX.XXX.XXX.XXX
LP Login Password     XXXXXX maxim 16 characters
SP Admin Password    XXXXXX maxim 16 characters
TP Device Type        0-iServer,1-iDRN,2-iDRX,3-iSeries,4-iNFB,5-iLD
RE Remote Enable      0-Disable, 1-Enable
RI Remote IP          XXX.XXX.XXX.XXX
RP Remote Port        XXXXX 500-65535 but 1000 and 2002
GW Gateway            XXX.XXX.XXX.XXX
EC End Char           XX represents the Hex Num. of ASCII. i.e 0D means CR
                      (Carriage Return)
FE Forward End Char   0-disabled, 1-enabled
EP Enable Serial Port Password 0-disabled, 1-enabled
CP Serial Port Password XXXXXX maxim 16 characters
CC Connect CTRL       0-not used,1-RTS+,2-RTS-,3-CTS+,4-CTS-,5-RTS-CTS+,
6-RTS-CTS-, 7-DTS+,8-DTR-, 9-DCD/DSR+
WB Web Server         0-disable, 1-enable

Example:
To configure Baudrate 9600, 1 stop bit, Odd Parity, and RS232 mode.
s -BD5 -PT1 -ST1 -MD0
```

**Figure 4.21 Telnet Setup - iServer Help Page**

## 4.7 HTTPGET Program

You can setup and read the information from the iServer by using the HTTPGET program. The following program can be used to read data from the embedded server firmware by using TCP port **1000**. The command string sends to this TCP port, then it reads back the response from the same port. Whatever you write to the port goes to the serial port unmodified. Any response from the serial port can be read back from the same socket.

The Httpget.exe file is used to setup and read information from the iServer. This file will be automatically installed when you run any iServer related software available on our website and CD.

Example to use the "Httpget" program:

1. Create a directory **C:\iServer\Httpget**.
2. Copy httpget.exe and readme\_features.doc files to this directory.
3. Make sure that you are in this directory and then enter the following test program:

**C:\iServer\Httpget\httpget -r -S "\*01X01\r" 128.100.101.254:1000**

where:

"-r -S" are switches before the command string

"01" is device address (in hex format) for RS485 communication interface (skip for RS232)

"X01" read measurement data value (iSeries protocol)

"\r" calls out a CR

"128.100.101.254" is an IP address

"1000" is a local port number

Respond:

**01X01074.3**

where:

"01X01" is Echo command

"074.3" is a display reading of the 4-digit device



In the example above the 4-digit iSeries controller has been connected to the serial communication port of iServer.

## 4.8 ARP Protocol

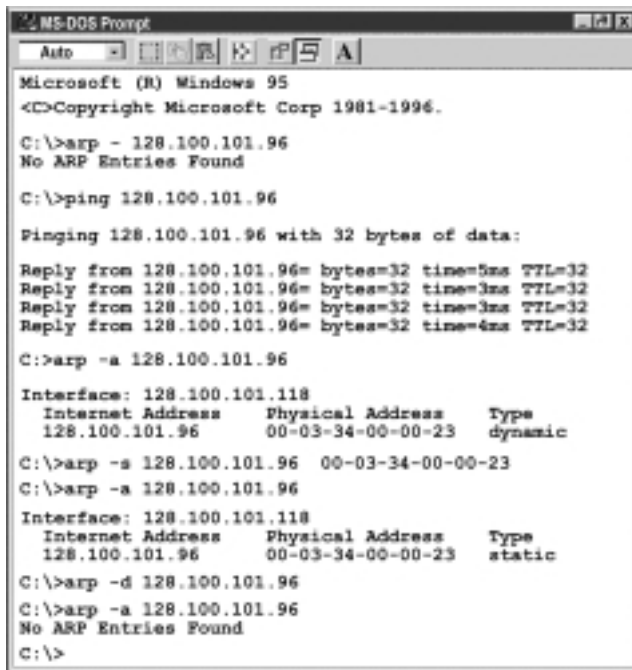
ARP is the Internet layer protocol responsible for determining the MAC (hardware) address that corresponds to a particular IP address. The ARP command allows the user to view the current contents of the ARP cache of the local computer (residing on the same network) or remote computer (residing on the different network) through a router. Microsoft includes the ARP.EXE utility for viewing and modifying the ARP cache with its Windows products. The following ARP commands can be used to view cache entries:

- **arp -a** → Use this command to view all ARP cache entries.
- **arp -a** plus **IP address** → Use this command to view ARP cache entries associated with one particular interface on a network with multiple adapters.
- **arp -g** → Same as arp -a.
- **arp -N** → Use this command to display ARP entries for specific network interface.
- **arp -s** plus **IP address** plus **Physical address** → Use this command to manually add a permanent static entry to the ARP cache.
- **arp -d** → Use this command to manually delete a static entry.

**Note** Ping the destination computer using IP address first before using the arp -a command.

The following window shows examples of arp commands and responses.

- Your computer has an IP address of **128.100.101.118**
- The destination computer has an IP address of **128.100.101.96**



```
Microsoft (R) Windows 95
<C>Copyright Microsoft Corp 1981-1996.

C:\>arp - 128.100.101.96
No ARP Entries Found

C:\>ping 128.100.101.96

Pinging 128.100.101.96 with 32 bytes of data:

Reply from 128.100.101.96= bytes=32 time=5ms TTL=32
Reply from 128.100.101.96= bytes=32 time=3ms TTL=32
Reply from 128.100.101.96= bytes=32 time=3ms TTL=32
Reply from 128.100.101.96= bytes=32 time=4ms TTL=32

C:\>arp -a 128.100.101.96

Interface: 128.100.101.118
Internet Address    Physical Address    Type
128.100.101.96      00-03-34-00-00-23  dynamic

C:\>arp -s 128.100.101.96 00-03-34-00-00-23
C:\>arp -a 128.100.101.96

Interface: 128.100.101.118
Internet Address    Physical Address    Type
128.100.101.96      00-03-34-00-00-23  static

C:\>arp -d 128.100.101.96
C:\>arp -a 128.100.101.96
No ARP Entries Found

C:\>
```

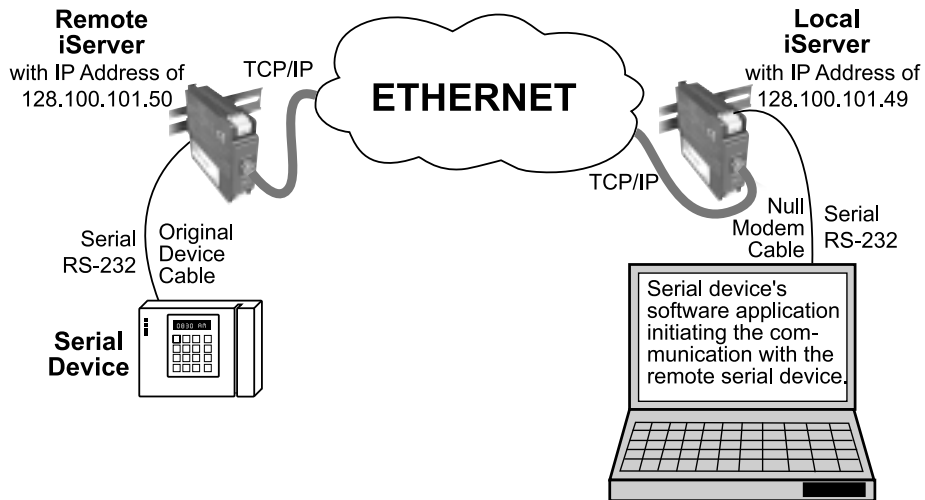
Figure 4.22 ARP Commands and Responses



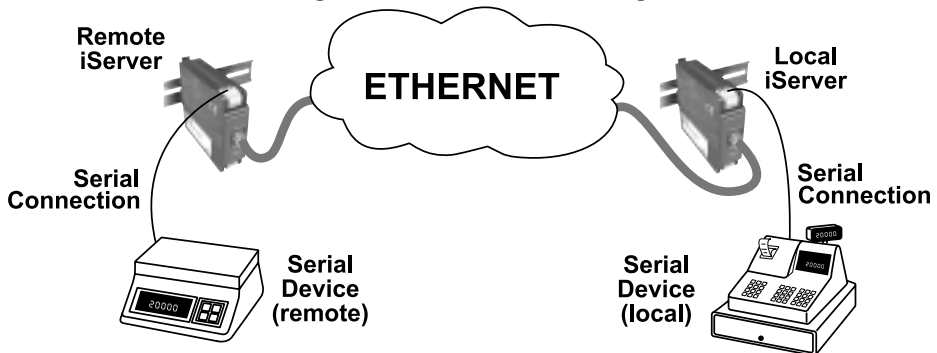
#### 4.9 Remote Access (Tunneling)

To "tunnel", in this context, is to transmit data between two points through a private conduit on a shared or public network. The network could be an Ethernet LAN, a WAN, or the Internet. The iServer allows for a connection between a serial device and a PC, or between two serial devices, using an existing network rather than dedicated wiring.

Today, there are number of serial devices like sensors, gauges, PLCs, card readers, security alarms, barcode scanners, data loggers, video cameras, ATM machines, time & attendance terminals, medical lab equipments, electronic signboards, and many others that are directly connected to PCs via their serial ports. These devices can be attached to shared Ethernet networks (TCP/IP protocol) and get accessed, controlled, and managed remotely using the iServer products. Any two iServer's can talk to each other over the Ethernet LAN, WAN, and Internet using TCP/IP protocol. Therefore, the connected serial devices to iServer's can also communicate with each other back and forth over these networks. This characteristic is called Tunneling and it's illustrated in **Figures 4.23 and 4.24**.



**Figure 4.23 Serial Tunneling**



**Figure 4.24 Device-to-Device Communication**

In order to use this Tunneling feature, some settings are required within the local and remote iServer's.

### 4.9.1 Remote iServer

It's recommended to configure the Remote iServer and have it up and running before the Local iServer is configured.

1. A static IP address must be assigned to the Remote iServer. This means that the DHCP must remain disabled. Refer to the DHCP section of the user's manual for details.
2. Use a browser to access the Remote iServer's WEB page. Simply type the iServer's IP address at the browser's URL location (i.e. 128.100.101.50) followed by an **Enter** key. You should then see the iServer's main WEB page.
3. Click on the **Update** button.
4. Click on **Configuration**, you will be prompted with a **Password** (default is 12345678).
5. On the **Configuration** page, under **Serial Communication** section, make sure the parameters such as Baud Rate, Data Bits, Parity, Stop Bits, Flow Control, etc. match with your attached serial device.
6. Make sure to set the **End Character (Hex)** to **00** and the **Timeout** to **0**.
7. Under Terminal Server section, set **Number of Sockets** to **1** or **higher**.
8. Click on Save button for the changes to take place.

Make sure that the serial cable and communication settings between the iServer and the serial device are valid.

**Note** Figure 4.25 shows the valid values that need to be set in the Remote iServer. The Baud Rate, Data Bits, Parity, Stop Bits, Flow Control, and Transceiver values depend on what the serial device supports.

The screenshot shows a web browser window with the address bar set to `http://128.100.101.50`. The main content area is titled **CONFIGURATION** and contains three sections:

- Serial Communication**:
  - Baud Rate:
  - Data Bits:
  - Parity:
  - Stop Bits:
  - Flow Control:
  - Transceiver:
  - Modbus/TCP:
  - End Character (Hex):
  - Forward End Char:
  - Timeout:  msec
  - Serial Port Password:
- Terminal Server**:
  - TCP/UDP:
  - Server Type:
  - Number of Connections:
  - Local Port:
  - Connection Control:
  - Connection Timeout:  X 10 msec
- Remote Access (Tunneling)**:
  - Remote Access:
  - Remote IP Address:
  - Remote Port:

At the bottom of the configuration area are **Save** and **Reset** buttons.

Figure 4.25 Configuration Menu - Remote iServer

## 4.9.2 Local iServer

1. An IP address should be assigned to the iServer dynamically or statically (recommended).
2. Use a browser to access the Local iServer's WEB page. Simply type the iServer's IP address at the browser's URL location (i.e. 128.100.101.49) followed by an **Enter** key. You should then see the iServer's main WEB page.
3. Click on the **Update** button.
4. Click on **Configuration**, you will be prompted with a **Password** (default is 12345678).
5. On the **Configuration** page, under **Serial Communication** section, make sure the parameters such as Baud Rate, Data Bits, Parity, Stop Bits, Flow Control, etc. match with your attached serial device and its application software.
6. Make sure to set the **End Character (Hex)** to **00** and the **Timeout** to **0**.
7. Under **Terminal Server** section, set **Number of Sockets** to **0**.
8. Under **Remote Access** section, set the **Remote Access** to **enable**, Enter the **Remote IP address** (would be the IP address of the remote iServer, 128.100.101.50), and use the default **Remote Port** number **2000**.
9. Set **Connection Control** to **Reconnect** and set the **Connection Timeout** to a desired value.

### Note

The **Reconnect** option is used in Serial Tunneling and it applies only to the Local iServer. If the tunneling connection between the two iServers goes down due to network problems, power failure, etc., the Reconnect option will enable the Local iServer to reconnect with the Remote iServer based on the specified time interval in the **Connection Timeout**. For example, based on a timeout of 1000 x 10 ms (10 seconds), the Local iServer will continually attempt to reconnect and re-establish the tunnel with the Remote iServer every 10 seconds.

10. Click on **Save** button for the changes to take place.
11. Initialize the serial device application software to establish the connection.

### Note

**Figure 4.26** shows the valid values that need to be set in the Local iServer. The Baud Rate, Data Bits, Parity, Stop Bits, Flow Control, and Transceiver values depend on what the attached device to the iServer supports.

Address

### CONFIGURATION

#### Serial Communication

Baud Rate  Data Bits  Parity  Stop Bits

Flow Control  Transceiver  Modbus/TCP

End Character (Hex)  Forward End Char  Timeout  msec

Serial Port Password

#### Terminal Server

TCP/UDP  Server Type  Number of Connections  Local Port

Connection Control  Connection Timeout  X 10 msec

#### Remote Access (Tunneling)

Remote Access  Remote IP Address  Remote Port

Figure 4.26 Configuration Menu - Local iServer

### 4.9.3 Tunneling Troubleshooting

Using the original serial cable, please confirm valid communication between the serial device and its application software on the PC with no iServers in between (direct serial connection).

A successful connection is evident when the Remote Access drop down menu in the Configuration page shows enable. This proves that the Serial Tunnel between the two iServers is up and running. Otherwise, reset the power, first on the remote iServer and then on the local iServer and recheck for Remote Access drop down menu as enable.

A quick way to check the LAN and serial tunneling connection is to separately access each iServer WEB page via the Ethernet. If successful, this should prove a valid LAN connection.

For serial tunneling, open a HyperTerminal session on the PC pointing to the same COM port to which the Local iServer is connected and type/send some characters. This should cause the Rx LED on the Local iServer to blink as it receives the data from the serial port and onto the LAN. Accordingly, the Tx LED on the Remote iServer should blink as it transmits the data from the LAN into the serial device. If no LEDs blink, then that could possibly point to the iServer connection in trouble - particularly, the serial cabling and/or the serial settings (Baud rate, stop bit, parity, etc.) throughout the communication path between the PC, the iServer, and the serial device.

## 4.10 iPORT, COM Port Redirector

To obtain the iPORT software (iPORT.exe file) please use the phone number, as listed on the cover of this manual, to contact the Sales Department nearest you.

To install the iPORT application, simply double-click on the iPORT.exe file and follow the installation steps. The iPORT is compatible with Windows NT, 2000, and XP operating systems.

### 4.10.1 Overview

The iPORT is a COM port redirecting software for Windows NT, 2000, and XP. Its function is to redirect connections that are destined for a local serial (COM) port on a PC, to an iServer network-enabling device on the LAN. In a direct serial connection, application software can communicate directly over an RS232 or RS485 with a serial device (**Figure 4.27**). By installing iPORT software on the same PC, the iPORT will redirect the serial connection from the COM port to the network port on that PC. The connection can simply reach the serial device through an iServer sitting anywhere on an Ethernet network (**Figure 4.28**). This connection redirection is totally transparent to the serial device and its application software. Once the connection is up from the PC to the serial device, the data is transmitted across the Ethernet network to the serial device and back from the serial device to the PC, all through the iServer and the iPORT.

### 4.10.1 Overview (continued)



Figure 4.27 Direct Serial Connection

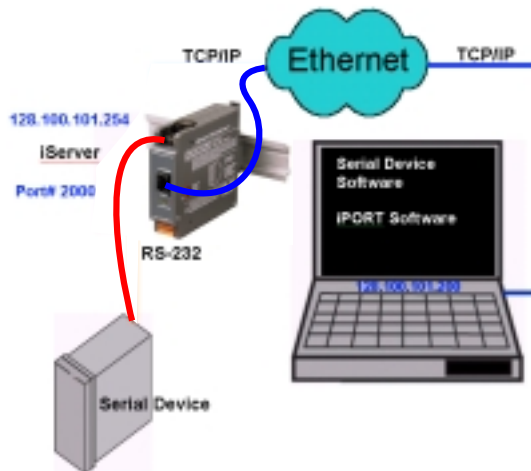


Figure 4.28 Redirect Serial Connection

### 4.10.2 Configurations

After the iPORT is successfully installed on your windows machine, you will have an iPORT icon on your desktop and Control Panel window. By double-clicking on this icon, you can start the application and the iPORT main window will appear on your screen (**Figure 4.29**). Click on "COM Ports" button and you will see the window on **Figure 4.30**. Select the appropriate COM port (this should be the same COM port that your application software uses). The selected COM port will then appear on the main iPORT window. By highlighting the selected COM port, you will be able to add the IP address and the port number to connect that COM port to the iServer on the network. Up to 255 COM ports can be selected and each can have a different IP configuration pointing to different iServers on the network. This enables users to simultaneously redirect different application software to connect to serial devices attached to networked iServers.

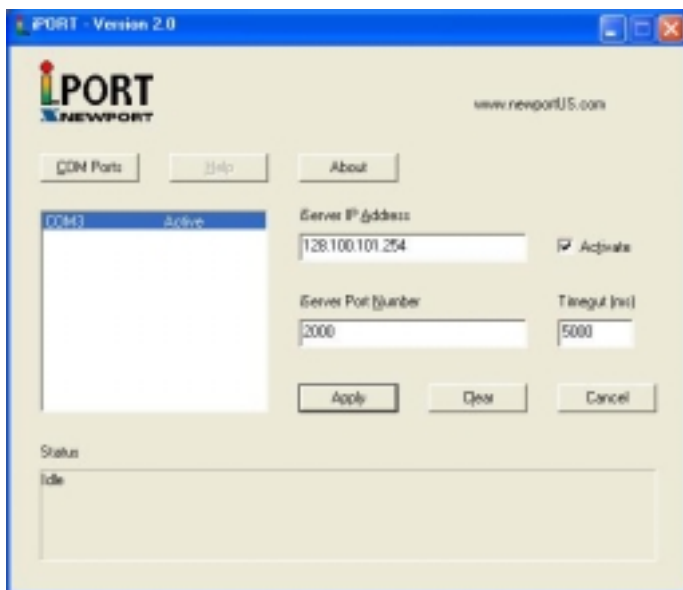


Figure 4.29 iPORT Main Window

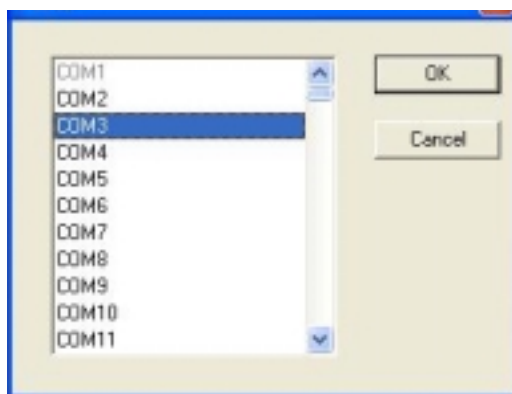


Figure 4.30 COM Port Window

**iServer IP Address** – This is the IP address of the iServer that is connected to the serial device on one end and attached to the Ethernet LAN on the other end. The iServer's default IP address is 128.100.101.254, which can be changed to fit your network IP address range (see the iServer's manual for details).

**iServer Port Number** – This is the port number for the iServer's local serial port. The default value is 2000. If this port number is changed in the iServer's Configuration page (see the iServer's manual for details), the same number should be placed in the iPORT window.

**Activate** – If this box is checked, the selected COM port will be available for network connection. If it is unchecked, the selected COM port will be in sleep mode.

**Timeout** – This is the amount of time (in milliseconds) in which the iPORT keeps the application software waiting before the device response is arrived. The default value is 5 seconds and it can be set between 0 to 10 seconds.

**Status** – This window shows the connection status as the iPORT makes connection to the iServer or disconnects from the iServer. The connection status can be ideal, connecting, connected, or disconnected along with the IP address of the iServer shown in the Status window.

**Apply button** – To save the configuration for a selected COM port, click on the "Apply" button and reboot your PC for settings to take place in your Windows registry.

**Clear button** – This button deletes the settings for a selected COM port.

**Cancel button** – This button closes the iPORT window without saving the settings.

**Note** In **Figure 4.30**, if a COM port number is dimmed and cannot be selected, it means that the COM port is already used by another application or it could be a physical serial COM port on that PC.

**Note** The serial communication settings (baud rate, data bit, stop bit and parity) of your application software must be identical to the serial communication settings of the iServer's serial port and your serial device's port connected to the iServer. You can use a Web browser to log into the iServer and configure its serial port's settings (see the iServer's manual for details).

## 4.11 Mail Notifier Software

The Mail Notifier Software can be used only with Newport Electronics' instruments.

For complete information of how to use the Mail Notifier software, click on the Help menu of the main window.

The Mail Notifier software utilizes E-Mail notifications of alarm conditions of the devices having either embedded iServer board or connected via the stand alone iServer units, which reformats RS232/485 bus traffic into Ethernet packets. Hence users/operators can be notified automatically of alarm conditions monitored via internet connections throughout the world. By use of the E-Mail forwarding of alarm conditions, alarm conditions can be monitored on a network isolated from the internet and forwarded to connections on the Internet.

The Mail Notifier utility operates under Windows 95, 98, NT 4.0, and NT 2000 in conjunction with existing E-Mail that supports the MAPI messaging interface. If MS Outlook has been loaded, the MAPI support should be available.

### 4.11.1 Installation

The Mail Notifier must be loaded on a computer running Microsoft Windows (versions specified earlier) and with a MAPI client software. Network access must be available between this computer and the iServer. Network access must also be available from this computer to the appropriate E-Mail server and from the E-Mail server to the recipient's E-Mail server.

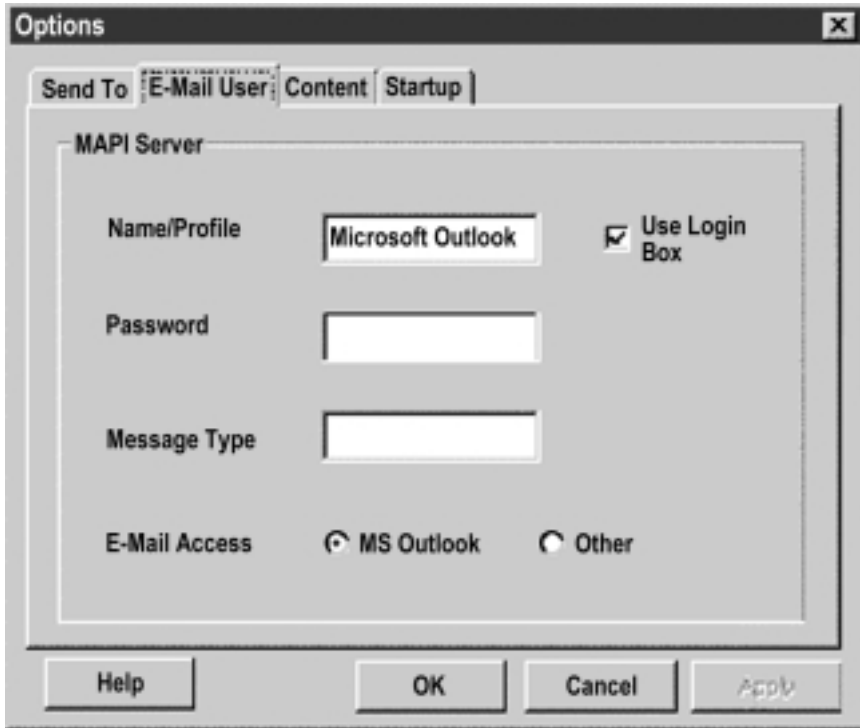


**Figure 4.31 iServer Mail Notifier Main Window**

#### 4.11.2 Program Options Setup and Configuration

Complete program setup requires:

- Entering a recipient for the E-Mail
- Specifying connection details to MAPI services.
- Defining alarms for devices, and selecting how and when the E-Mail will be active.



**Figure 4.32 iServer Mail Notifier Profile Setup**

The E-Mail User tab provides fields to define the name/profile for the Mail Notifier to utilize when E-Mail is sent.

Follow the steps below to set profile in Microsoft Exchange (5.0.1458.47)

1. Start Microsoft Exchange.
2. From Menu bar select tools, options.
3. It will open to the General tab.
4. On the General tab there is the "When starting Microsoft Exchange" options.
5. The profile name is specified under the "Always use this profile" option button.
6. On the Mail Notifier, go to View, Options.
7. From the options dialog, go to the E-mail User tab.
8. Set the Name/Profile to the profile name obtained in Step 5
9. Make sure that the E-Mail Access option is set to MS Outlook. (This is used to prevent input of a password -- which isn't going to be used with Microsoft Exchange)

The Send To tab contains a field to specify an E-mail address to which alarm notifications will be sent. Only one entry is permitted, but with some E-Mail packages, the entry can represent a group of users with different E-Mail addresses.



### 4.11.3 Device Setting and Configuration

Device setup requires:

- Entering the IP address for iServer device (for example 128.100.101.98).
- Specifying Socket number (1000 for iServer).
- Defining RS485 Unit # serial interface address (1 to 199). Enter "0" for RS232 interface.
- Entering Reading command. Normally set to X01 to obtain reading from the devices.
- Defining the Alarm setup (High/Low, High value, or Low value).
- Specifying Pause Interval. It determines how many seconds each subsequential alarm notification will be sent.
- Determining Monitor interval. It establishes the interval or time resolution in seconds for which readings will be obtained from the device.

The screenshot shows the 'Alarm Editor' dialog box with the following fields and values:

device info (2 of 2)	
Server IP Address	128.100.101.98
Socket Number	1000
RS485 Unit #	1
Description	Series Controller
Src ID	Dev 2
Reading Cmd	X01

Buttons: OK, Cancel, Help, Add, Del

Alarm Configuration	
Alarm Type	Alarm Low
Info Message	Alarm triggered
Alarm High	70
Pause Interval	60
Alarm Low	100
Monitor Interval	5

Figure 4.33 iServer Mail Notifier Device Setting

## **PART 5 SPECIFICATIONS**

### **SERIAL INTERFACE**

**Interface:**

RS-232, RS-422 or RS-485 (2 wire)

**Connector:**

Screw Terminal Block, 8 positions

**Data Rates:**

300 to 115200 bps

**Characters:**

7 or 8 data bits

**Parity:**

odd, even, or none

**Stop bits:**

1 or 2

**Flow Control:**

Software (Xon/Xoff)

Hardware (CTS/RTS)

**Digital I/O's:**

4 digital input/output lines

### **NETWORK INTERFACE**

**Interface:**

Ethernet 10 Base-T

**Connector:**

RJ45

**Protocols:**

ARP, TCP/IP, ICMP, DNS, DHCP,  
Telnet simulation and HTTP

**Indicators (LED):**

Network Activity/COL (red),  
Network Link/ON (green),  
TX-Transmit (yellow),  
RX-Receive (green)

### **PROCESSOR**

**CPU:**

Enhanced 8051, 22 MHz

**Memory:**

16 Kbyte SRAM, 512 Kbyte Flash

**Management:**

Serial Login, Telnet Login,  
Internal Web Server

### **INTERNAL WEB SERVER**

**Uses:** Dynamic web pages and Java  
applets (256 Kbyte capacity)

### **ENVIRONMENTAL**

**Operating Temperature:**

0 to 70°C (32 to 158°F)

**Storage Temperature:**

-40 to 125°C (-40 to 257°F)

**Power Input**

10-32 Vdc

**Consumption:**

2 W max

### **GENERAL**

**Agency Approvals**

FCC-B, C/UL, CE

**Software**

Firmware upgradeable. Compatible  
with Windows 9x / ME / NT / 2000 / XP  
software and related utilities

### **PACKAGING**

**Material:**

Plastic case with DIN Rail mount

**Dimensions:**

90.2H x 25.1W x 115.0 D mm  
(3.54 x 0.99 x 4.53 in)

**Weight:**

0.113 kg (0.25 lbs.)

## PART 6

### FACTORY PRESET VALUES

PRESET PARAMETERS	FACTORY DEFAULTS
<b>Network Interface:</b>	
IP Address	128.100.101.254
Gateway Address	0.0.0.0
Subnet Mask	255.255.0.0
Device Host Name	eis and Last 4 digits from the MAC address
Login Password	12345678
Admin Password	00000000
DHCP	Disabled
<b>Serial Interface:</b>	
Communication Protocol	RS-232
Flow Control	None
Baud Rate	9600
Parity	None
Stop Bit	1 bit
Data Bit	8 bits
Timeout	500 msec
End Character	0D (Hex) (Carriage Return)
<b>Terminal Server:</b>	
Server Type	Slave
Number of Sockets	0
Port #	2000
Server Mode	Disable
<b>Remote Access (Tunneling):</b>	
Remote Access	Disable
Remote Port	2000
Remote IP Address	0.0.0.0

User of this manual should be familiar with following definitions:

**ARP (Address Resolution Protocol)** is a protocol for mapping an Internet Protocol address (IP address) to a physical machine address that is recognized in the local network. For example, the IP address in use today is an address that is 32-bits long. In an Ethernet local area network, however, addresses for attached devices are 48-bits long. (The physical machine address is also known as a Media Access Control or MAC address.) A table, usually called the ARP cache, is used to maintain a correlation between each MAC address and its corresponding IP address. ARP provides the protocol rules for making this correlation and providing address conversion in both directions.

**Ethernet** is a network protocol defined by the IEEE 802.3 standard. Ethernet-based networks use MAC Address rather than IP Address to exchange data between computers. By using ARP and adding TCP/IP support, Ethernet devices may be connected as part of the Internet. An Ethernet LAN typically uses coaxial cable or special grades of twisted pair wires. The most commonly installed Ethernet systems are called 10BASE-T and provide transmission speeds up to 10 Mbps. Devices are connected to the cable and compete for access using a Carrier Sense Multiple Access with Collision Detection (CSMA/CD) protocol.

**IP (Internet Protocol)** is the method or protocol by which data is sent from one computer to another on the Internet.

**IP address (Internet Protocol address)** is a 32-bit number that identifies each sender or receiver of information that is sent in packets across the Internet.

**IP Netmask** is a 32-bit pattern of bits used to determine which part of the IP address is the network portion and which part is the host portion.

**MAC (Media Access Control) Address** is your computer's unique hardware number. When you're connected to the Internet from your computer, a correspondence table relates your IP address to your computer's physical (MAC) address on the LAN.

**Ping** is a utility that tests the network connectivity. It is used to determine if the host is capable of exchanging information with another host.

**Port number/Socket number** is a way to identify a specific process to which an Internet or other network message is to be forwarded when it arrives at a server. It is a predefined address that serves as a route from the application to the Transport layer or from the Transport layer to the application of the TCP/IP system.

**Sockets** are a method for communication between a client program and a server program in a network and defined as "the endpoint in a connection." Information transferred across the Internet primarily occurs between sockets.

**TCP/IP (Transmission Control Protocol/Internet Protocol)** is the basic communication language or protocol of the Internet. When you are set up with direct access to the Internet, your computer is provided with a copy of the TCP/IP program just as every other computer that you may send messages to or get information from also has a copy of TCP/IP. TCP/IP often is used as a general term to indicate generic access to the Internet.

An IP address is a unique 32-bit address assigned to a computer and includes:

- A network ID number identifying a network.
- A host ID number identifying a computer on the network.

All IP addresses have been divided into three smaller groups (classes) A, B and C

- **Class A** addresses have 8-bits of network ID and 24-bits of host ID. They can support a large number of hosts, approximately  $2^{24} = 16,777,216$  computers per network.

The IP addresses range in binary from 00000001.xxxxxxxx.xxxxxxxx.xxxxxxxx  
to 01111111.xxxxxxxx.xxxxxxxx.xxxxxxxx

The IP addresses range in decimal from 1.x.x.x to 127.x.x.x

Class A network ID's support a very large number of hosts.

- **Class B** addresses have 16-bits of network ID and 16-bits of host ID. They can support approximately  $2^{16} = 65,536$  computers per network.

The IP addresses range in binary from 10000000 00000000.xxxxxxxx.xxxxxxxx  
to 10111111 11111111.xxxxxxxx.xxxxxxxx

The IP addresses range in decimal from 128.0.x.x TO 191.255.xxx.xxx

Class B network ID's support a medium number of hosts.

- **Class C** addresses have 24-bits of network ID and 8-bits of host ID. They can support approximately  $2^8 = 256$  computers per network.

The IP addresses range in binary from 11000000.00000000.00000000.xxxxxxxx  
to 11011111.11111111.11111111.xxxxxxxx

The IP addresses range in decimal from 192.0.0.xxx to 223.255.255.xxx

Class C network ID's support a small number of hosts.



The rest of the addresses are divided into two classes, D and E.

**Class D networks** are not assigned to the host. They are used for multicasting.  
The address range from 224.x.x.x to 239.x.x.x

**Class E** networks are experimental or reserved addresses.

The address range from 240.x.x.x to 247.x.x.x

## Appendix C

## IP Netmask

IP Netmask or Subnet Mask is a 32-bit pattern of ones and zeros used to determine network portion of an IP address from the host portion of the IP address. Subnet mask is a network ID that is created by borrowing bits from host portion of IP address and using them as part of a network ID. The table below shows a default subnet mask for address Classes A, B, and C. Each bit that is set to "1" in the subnet mask corresponds to the bit in the IP address that is to be used as the network ID. Each bit that is set to "0" in the subnet mask corresponds to a bit in the IP address that is to be used as the host ID.

Address Class	Mask Binary Value	Mask Decimal Value or Dotted Notation
Class A	11111111 00000000 00000000 00000000	255.0.0.0
Class B	11111111 11111111 00000000 00000000	255.255.0.0
Class C	11111111 11111111 11111111 00000000	255.255.255.0

If your network requires more network ID's, you can extend the default subnet mask to include additional bits from the host ID. This allows for additional network ID's within the network. The table below shows some examples of subnet masks and bits moved from the hosts ID to create a new subnet.

Mask Dotted Notation	Mask Binary	Mask Bits
<b>Class A</b>		
255.0.0.0 (Default)	11111111 00000000 00000000 00000000	0
255.192.0.0	11111111 11000000 00000000 00000000	2
255.224.0.0	11111111 11100000 00000000 00000000	3
255.240.0.0	11111111 11110000 00000000 00000000	4
255.248.0.0	11111111 11111000 00000000 00000000	5
255.252.0.0	11111111 11111100 00000000 00000000	6
255.254.0.0	11111111 11111110 00000000 00000000	7
255.255.0.0	11111111 11111111 00000000 00000000	8
255.255.128.0	11111111 11111111 10000000 00000000	9
255.255.192.0.0	11111111 11111111 11000000 00000000	10
.....	.....	.....
255.255.255.252	11111111 11111111 11111111 11111100	22
<b>Class B</b>		
255.255.0.0 (Default)	11111111 11111111 00000000 00000000	0
255.255.192.0	11111111 11111111 11000000 00000000	2
.....	.....	.....
255.255.255.252	11111111 11111111 11111111 11111100	14
<b>Class C</b>		
255.255.255.0 (Default)	11111111 11111111 11111111 00000000	0
255.255.255.192	11111111 11111111 11111111 11000000	2
.....	.....	.....
255.255.255.254	11111111 11111111 11111111 11111100	6

To determine the number of valid hosts ID's remaining after subnetting, use the following equation:  $2^n - 2$ , where n is the number of octet digits left after the subnet mask.

# Appendix D

# ASCII Chart

ASCII Char	Dec	Hex	Binary No Parity	ASCII Char	Dec	Hex	Binary No parity
NUL	00	00	00000000	@	64	40	01000000
SOH	01	01	00000001	A	65	41	01000000
STX	02	02	00000010	B	66	42	01000010
ETX	03	03	00000011	C	67	43	01000011
EOT	04	04	00000100	D	68	44	01000100
ENQ	05	05	00000101	E	69	45	01000101
ACK	06	06	00000110	F	70	46	01000110
BEL	07	07	00000111	G	71	47	01000111
BS	08	08	00001000	H	72	48	01001000
HT	09	09	00001001	I	73	49	01001001
LF	10	0A	00001010	J	74	4A	01001010
VT	11	0B	00001011	K	75	4B	01001011
FF	12	0C	00001100	L	76	4C	01001100
CR	13	0D	00001101	M	77	4D	01001101
SO	14	0E	00001110	N	78	4E	01001110
SI	15	0F	00001111	O	79	4F	01001111
DLE	16	10	00010000	P	80	50	01010000
DC1	17	11	00010001	Q	81	51	01010001
DC2	18	12	00010010	R	82	52	01010010
DC3	19	13	00010011	S	83	53	01010011
DC4	20	14	00010100	T	84	54	01010100
NAK	21	15	00010101	U	85	55	01010101
SYN	22	16	00010110	V	86	56	01010110
ETB	23	17	00010111	W	87	57	01010111
CAN	24	18	00011000	X	88	58	01011000
EM	25	19	00011001	Y	89	59	01011001
SUB	26	1A	00011010	Z	90	5A	01011010
ESC	27	1B	00011011	[	91	5B	01011011
FS	28	1C	00011100	\	92	5C	01011100
GS	29	1D	00011101	]	93	5D	01011101
RS	30	1E	00011110	^	94	5E	01011110
US	31	1F	00011111	_	95	5F	01011111
SP	32	20	00100000	`	96	60	01100000
!	33	21	00100001	a	97	61	01100001
"	34	22	00100010	b	98	62	01100010
#	35	23	00100011	c	99	63	01100011
\$	36	24	00100100	d	100	64	01100100
%	37	25	00100101	e	101	65	01100101
&	38	26	00100110	f	102	66	01100110
'	39	27	00100111	g	103	67	01100111
(	40	28	00101000	h	104	68	01101000
)	41	29	00101001	i	105	69	01101001
*	42	2A	00101010	j	106	6A	01101010
+	43	2B	00101011	k	107	6B	01101011
,	44	2C	00101100	l	108	6C	01101100
-	45	2D	00101101	m	109	6D	01101101
.	46	2E	00101110	n	110	6E	01101110

**Appendix D****ASCII Chart Continuation**

/	47	2F	00101111	o	111	6F	01101111
0	48	30	00110000	p	112	70	01110000
1	49	31	00110001	q	113	71	01110001
2	50	32	00110010	r	114	72	01110010
3	51	33	00110011	s	115	73	01110011
4	52	34	00110100	t	116	74	01110100
5	53	35	00110101	u	117	75	01110101
6	54	36	00110110	v	118	76	01110110
7	55	37	00110111	w	119	77	01110111
8	56	38	00111000	x	120	78	01111000
9	57	39	00111001	y	121	79	01111001
:	58	3A	00111010	z	122	7A	01111010
;	59	3B	00111011	{	123	7B	01111011
<	60	3C	00111100		124	7C	01111100
=	61	3D	00111101	}	125	7D	01111101
>	62	3E	00111110	~	126	7E	01111110
?	63	3F	00111111	DEL	127	7F	01111111

**ASCII Control Codes**

ASCII Char	Dec	Hex	Ctrl Key Equiv.	Definition	ASCII Char	Dec	Hex	Ctrl Key Equiv.	Definition
NUL	00	00	Ctrl @	Null Character	DC1	17	11	Ctrl Q	Data Control 1 - XON
SOH	01	01	Ctrl A	Start of Header	DC2	18	12	Ctrl R	Data Control 2
STX	02	02	Ctrl B	Start of Text	DC3	19	13	Ctrl S	Data Control 3 - XOFF
ETX	03	03	Ctrl C	End of Text	DC4	20	14	Ctrl T	Data Control 4
EOT	04	04	Ctrl D	End of Transmission	NAK	21	15	Ctrl U	Negative Acknowledge
ENQ	05	05	Ctrl E	Inquiry	SYN	22	16	Ctrl V	Synchronous Idle
ACK	06	06	Ctrl F	Acknowledge	ETB	23	17	Ctrl W	End of Trans Block
BEL	07	07	Ctrl G	Bell	CAN	24	18	Ctrl X	Cancel
BS	08	08	Ctrl H	Back Space	EM	25	19	Ctrl Y	End of Medium
HT	09	09	Ctrl I	Horizontal Tabulation	SUB	26	1A	Ctrl Z	Substitute
LF	10	0A	Ctrl J	Line Feed	ESC	27	1B	Ctrl [	Escape
VT	11	0B	Ctrl K	Vertical Tabulation	FS	28	1C	Ctrl \	File Separator
FF	12	0C	Ctrl L	Form Feed	GS	29	1D	Ctrl ]	Group Separator
CR	13	0D	Ctrl M	Carriage Return	RS	30	1E	Ctrl	Record Separator
SO	14	0E	Ctrl N	Shift Out	US	31	1F	Ctrl _	Unit Separator
SI	15	0F	Ctrl O	Shift In	SP	32	20		Space
DLE	16	10	Ctrl P	Data Link Escape					



## PART 7

### APPROVALS INFORMATION

#### 7.1 CE APPROVAL

 This product conforms to the EMC directive 89/336/EEC amended by 93/68/EEC, and with the European Low Voltage Directive 72/23/EEC.

##### **Electrical Safety EN61010-1:2001**

Safety requirements for electrical equipment for measurement, control and laboratory.

##### **Basic Insulation**

##### **Pollution Degree 2**

##### **Dielectric withstand Test per 1 min**

- Input Power to Ethernet Output: 1500Vac
- Input Power to I/O lines connector: 1500Vac
- Ethernet to I/O lines connector: 1500Vac

##### **Measurement Category I**

*Category I are measurements performed on circuits not directly connected to the Mains Supply (power).*

##### **Transients Overvoltage Surge (1.2/50uS Pulse)**

- Input Power: 500V Transients Overvoltage
- I/O lines: 500V Transients Overvoltage
- Ethernet: 1500V Transients Overvoltage

**Note:** *The ac power adaptor must have Safety Qualified Agency Approvals for CE with Double Insulation rating.*

*The power input rating is 10-32Vdc.*

*The minimum output current rating is 500mA.*

##### **EMC EN61000-6-1:2001 (Immunity) and EN61000-6-3:2001 (Emissions)**

Immunity requirements for residential, commercial and light-industrial environments

- EMC Emissions Table 1, Class B
- EMC Immunity Table 1: Enclosure  
Table 2: Signal Lines Ports  
Table 3: Dc input/Dc output Ports

##### **EMC EN61326:1997 + and A1:1998 + A2:2001**

Immunity and Emissions requirements for electrical equipment for measurement, control and laboratory.

- EMC Emissions Table 4, Class B of EN61326
- EMC Immunity Table 1 of EN61326

**Note:** *I/O lines require shielded cables and these cables must be located on conductive cable trays or in conduits. Furthermore, the length of these cables should not exceed 30 meters*



Refer to the EMC and Safety installation considerations (Guidelines) of this manual for additional information.

#### 7.2

##### **FCC**

This device complies with Part 15, Subpart B, Class B of the FCC rules.



## WARRANTY/DISCLAIMER

OMEGA ENGINEERING, INC. warrants this unit to be free of defects in materials and workmanship for a period of **one (1) year** from the date of purchase. In addition to OMEGA's standard warranty period, OMEGA Engineering will extend the warranty period for **one (1) additional year** if the warranty card enclosed with each instrument is returned to OMEGA.

If the unit malfunctions, it must be returned to the factory for evaluation. OMEGA's Customer Service Department will issue an Authorized Return (AR) number immediately upon phone or written request. Upon examination by OMEGA, if the unit is found to be defective, it will be repaired or replaced at no charge. OMEGA's WARRANTY does not apply to defects resulting from any action of the purchaser, including but not limited to mishandling, improper interfacing, operation outside of design limits, improper repair, or unauthorized modification. This WARRANTY is VOID if the unit shows evidence of having been tampered with or shows evidence of having been damaged as a result of excessive corrosion; or current, heat, moisture or vibration; improper specification; misapplication; misuse or other operating conditions outside of OMEGA's control. Components which wear are not warranted, including but not limited to contact points, fuses, and triacs.

OMEGA is pleased to offer suggestions on the use of its various products. However, OMEGA neither assumes responsibility for any omissions or errors nor assumes liability for any damages that result from the use of its products in accordance with information provided by OMEGA, either verbal or written. OMEGA warrants only that the parts manufactured by it will be as specified and free of defects. OMEGA MAKES NO OTHER WARRANTIES OR REPRESENTATIONS OF ANY KIND WHATSOEVER, EXPRESS OR IMPLIED, EXCEPT THAT OF TITLE, AND ALL IMPLIED WARRANTIES INCLUDING ANY WARRANTY OF MERCHANTABILITY AND FITNESS FOR A PARTICULAR PURPOSE ARE HEREBY DISCLAIMED. LIMITATION OF LIABILITY: The remedies of purchaser set forth herein are exclusive, and the total liability of OMEGA with respect to this order, whether based on contract, warranty, negligence, indemnification, strict liability or otherwise, shall not exceed the purchase price of the component upon which liability is based. In no event shall OMEGA be liable for consequential, incidental or special damages.

CONDITIONS: Equipment sold by OMEGA is not intended to be used, nor shall it be used: (1) as a "Basic Component" under 10 CFR 21 (NRC), used in or with any nuclear installation or activity; or (2) in medical applications or used on humans. Should any Product(s) be used in or with any nuclear installation or activity, medical application, used on humans, or misused in any way, OMEGA assumes no responsibility as set forth in our basic WARRANTY/DISCLAIMER language, and, additionally, purchaser will indemnify OMEGA and hold OMEGA harmless from any liability or damage whatsoever arising out of the use of the Product(s) in such a manner.

## RETURN REQUESTS/INQUIRIES

Direct all warranty and repair requests/inquiries to the OMEGA Customer Service Department. BEFORE RETURNING ANY PRODUCT(S) TO OMEGA, PURCHASER MUST OBTAIN AN AUTHORIZED RETURN (AR) NUMBER FROM OMEGA'S CUSTOMER SERVICE DEPARTMENT (IN ORDER TO AVOID PROCESSING DELAYS). The assigned AR number should then be marked on the outside of the return package and on any correspondence.

The purchaser is responsible for shipping charges, freight, insurance and proper packaging to prevent breakage in transit.

FOR WARRANTY RETURNS, please have the following information available BEFORE contacting OMEGA:

1. Purchase Order number under which the product was PURCHASED,
2. Model and serial number of the product under warranty, and
3. Repair instructions and/or specific problems relative to the product.

FOR NON-WARRANTY REPAIRS, consult OMEGA for current repair charges. Have the following information available BEFORE contacting OMEGA:

1. Purchase Order number to cover the COST of the repair,
2. Model and serial number of product, and
3. Repair instructions and/or specific problems relative to the product.

OMEGA's policy is to make running changes, not model changes, whenever an improvement is possible. This affords our customers the latest in technology and engineering.

© Copyright 2005 OMEGA ENGINEERING, INC. All rights reserved. This document may not be copied, photocopied, reproduced, translated, or reduced to any electronic medium or machine-readable form, in whole or in part, without the prior written consent of OMEGA ENGINEERING, INC.

**TRADEMARK NOTICE:** ®, *omega.com*®,  **OMEGA**®, and ™ are Trademarks of OMEGA ENGINEERING, INC.

**PATENT NOTICE:** This product is covered by one or more of the following patents: U.S. Pat. No. Des. 336,895; 5,274,577/ CANADA 2052599; 2052600 / ITALY 1249456; 1250938 / FRANCE BREVET No. 91 12756 / SPAIN 2039150; 2048066 / UK PATENT No. GB2 249 837; GB2 248 954 / GERMANY DE 41 34398 C2. Other US and International Patents pending or applied for.

# **Where Do I Find Everything I Need for Process Measurement and Control? OMEGA...Of Course!**

***Shop on line at [www.omega.com](http://www.omega.com)***

## **TEMPERATURE**

- ☑ Thermocouple, RTD & Thermistor Probes, Connectors, Panels & Assemblies
- ☑ Wire: Thermocouple, RTD & Thermistor
- ☑ Calibrators & Ice Point References
- ☑ Recorders, Controllers & Process Monitors
- ☑ Infrared Pyrometers

## **PRESSURE, STRAIN AND FORCE**

- ☑ Transducers & Strain Gauges
- ☑ Load Cells & Pressure Gauges
- ☑ Displacement Transducers
- ☑ Instrumentation & Accessories

## **FLOW/LEVEL**

- ☑ Rotameters, Gas Mass Flowmeters & Flow Computers
- ☑ Air Velocity Indicators
- ☑ Turbine/Paddlewheel Systems
- ☑ Totalizers & Batch Controllers

## **pH/CONDUCTIVITY**

- ☑ pH Electrodes, Testers & Accessories
- ☑ Benchtop/Laboratory Meters
- ☑ Controllers, Calibrators, Simulators & Pumps
- ☑ Industrial pH & Conductivity Equipment

## **DATA ACQUISITION**

- ☑ Data Acquisition & Engineering Software
- ☑ Communications-Based Acquisition Systems
- ☑ Plug-in Cards for Apple, IBM & Compatibles
- ☑ Datalogging Systems
- ☑ Recorders, Printers & Plotters

## **HEATERS**

- ☑ Heating Cable
- ☑ Cartridge & Strip Heaters
- ☑ Immersion & Band Heaters
- ☑ Flexible Heaters
- ☑ Laboratory Heaters

## **ENVIRONMENTAL MONITORING AND CONTROL**

- ☑ Metering & Control Instrumentation
- ☑ Refractometers
- ☑ Pumps & Tubing
- ☑ Air, Soil & Water Monitors
- ☑ Industrial Water & Wastewater Treatment
- ☑ pH, Conductivity & Dissolved Oxygen Instruments