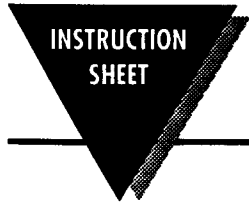


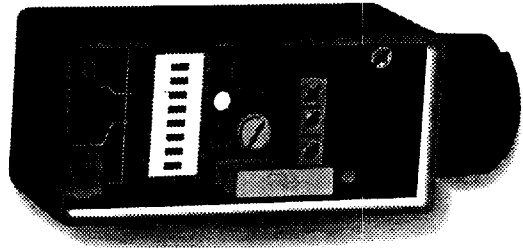


# SVT-1078

## Solenoid Timers



M2201/0695



### Unpacking Instructions

Remove the Packing List and verify that you have received all equipment, including the following (quantities in parentheses):

SVT-1078 Solenoid Timers (1)

Operator's Manual (1)

If you have any questions about the shipment, please call the OMEGA Customer Service Department.

When you receive the shipment, inspect the container and equipment for signs of damage. Note any evidence of rough handling in transit. Immediately report any damage to the shipping agent.

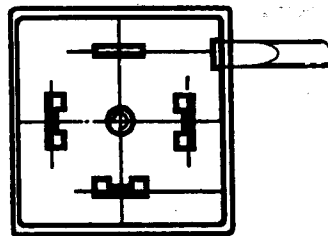
**NOTE**

The carrier will not honor damage claims unless all shipping material is saved for inspection. After examining and removing contents, save packing material and carton in the event reshipment is necessary.

The setting of time is proportional:

For example: setting 8 sec in the time range 0.5 to 10 sec becomes 8 h when changing the range to 0.5 to 10 h.

**ATTENTION:** Make sure the voltage supply is disconnected!



Ease the terminal block out with a screwdriver point and lift carefully. Connection board can be rotated 4 x 90°.

**NOTE:** Do not twist wires off.

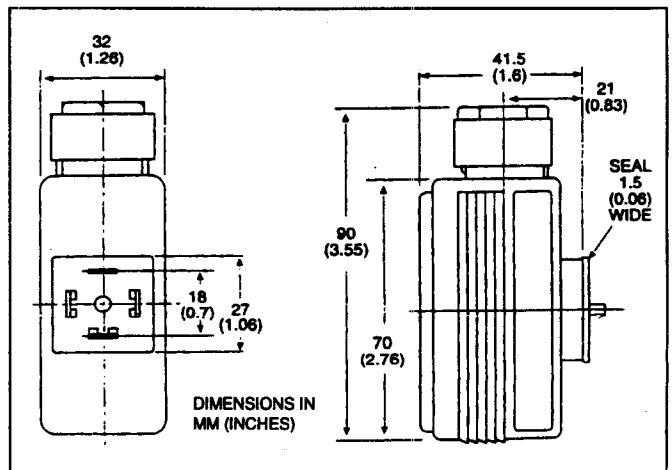
Insert connection board into body until it snaps in.

### Available Models

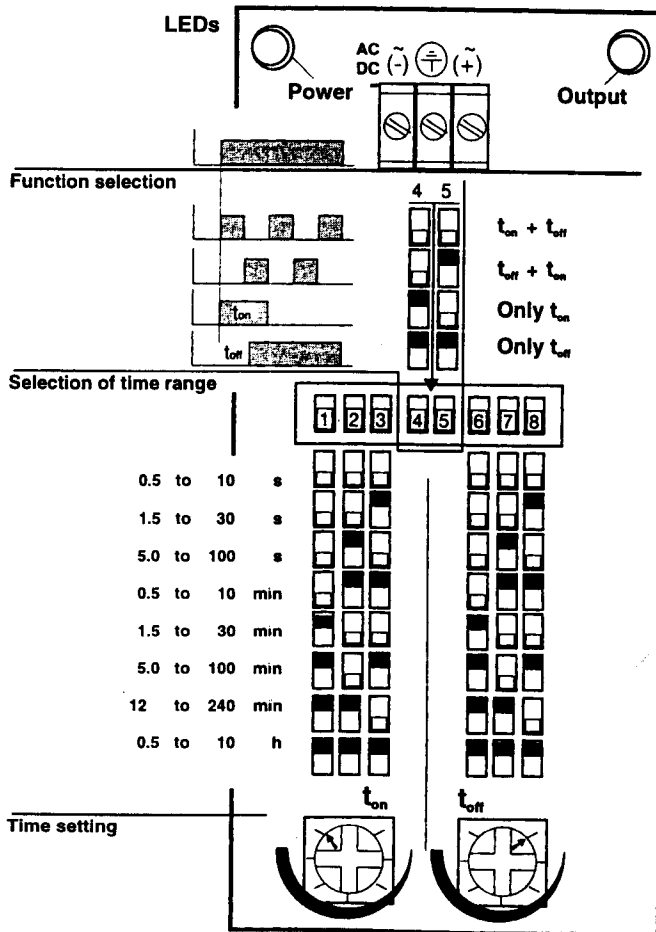
Part Number	Description	Voltage
SVT-1078	Solenoid valve timer	120-240
SVT-1078 24/48	Solenoid valve timer	24-48

### Description

The SVT-1078 Solenoid Timers replace the standard cable plugs to provide time control. Four functions are programmable with individually adjustable time ranges. The user can select from 8 different time spans. The switching times within a preselected time range are being adjusted via potentiometers. Two integrated red light emitting diodes are provided for the functioning control. The timer unit can be coupled with any valve as long as the switching load does not exceed the indicated loads as listed on the reverse side.



## Spare Parts



## Specifications

**Supply Voltage:** 110-230 V/50-60 Hz (standard);  
24-48 V/50-60 Hz or dc (optional),  $\pm 10\%$

**Power Consumption:** Max. 1.0 W

## Switching Load:

$I_{max} = 0.5$  A at supply voltage 110-230 V/50-60 Hz

$I_{max} = 1.5$  A at supply voltage 24-48 V/50-60 Hz

**Note:** Terminal voltage and current type must always equal the connected load of solenoid valve.

**Cable Outlet:** Rotatable in  $90^\circ$  steps

**Poles:** 2-pole and earth ground

**Outlet:** Connector pin assignment according to DIN 43 650

**Contact:** Plane contact similar to flat plug (DIN 46 247/48)

**Connection:** 3-Pole terminal strip in the unit, max. wire diameter 1.5 mm<sup>2</sup>, PG-cable gland at 6 to 7 mm

**Classification:** IP 65, air gaps and leakage paths according to VDE 0100

**Operating Temperature Range:** 0 to 54°C (32-130°F)

**Influence of Temperature on Response Time:**  $\pm 5\%$  of full scale time range

**Influence of Voltage on Response Time:**  $\pm 1\%$  of full scale time range

**Indicators:** LED for connected power supply and energized load

**Adjustment:** Function and time range via DIP switch; precision adjustment of response times via potentiometer

**Body Material:** Polyamide plastic

**Mounting:** Cheesehead screw M3 x 45 mm

**Weight:** 60 g (2.1 oz.)

**Cycler:** Connected valve is switched on and off periodically according to the times  $t_{on}$  and  $t_{off}$  to be set. The function "cycler" starts with  $t_{on}$ .

**Inverted Cycler:** Circuit function of the cycler is actuated in reverse sequence of operation. "Inverted cycler" starts with  $t_{off}$ .

**Switch-On Impulse:** Once energized, the connected valve is operated for the preset time ( $t_{on}$ ). Then, the valve switches off until it is energized again.

**Switch-On Delay:** Once energized, the connected valve is switched only after the expiration of the preset time ( $t_{on}$ ) for the duration of the supply voltage being applied.

**Time Ranges for  $t_{on}$  and  $t_{off}$ :** individually combinable: 0.5-10 sec; 1.5-30 sec; 5.0-100 sec; 0.5-10 min; 1.5-30 min; 5-100 min; 12-240 min; 0.5-10 hr.

**Delivery Status:**  $t_{on} = 0.5-10$  sec;  $t_{off} = 0.5-10$  sec, function pulse generator

## WARRANTY

OMEGA warrants this unit to be free of defects in materials and workmanship and to give satisfactory service for a period of 13 months from date of purchase. OMEGA product warranty to cover handling and shipping time. This ensures that OMEGA's customers receive maximum coverage on each product. If the unit should malfunction, it must be returned to the factory for evaluation. OMEGA's Customer Service Department will issue an Authorized Return (AR) number immediately upon phone or written request. Upon examination by OMEGA, if the unit is found to be defective, it will be repaired or replaced at no charge. However, this WARRANTY is VOID if the unit shows evidence of having been tampered with or shows evidence of being damaged as a result of excessive corrosion; or current, heat, moisture or vibration; improper specification; misapplication; misuse or other operating conditions outside of OMEGA's control. Components which wear or which are damaged by misuse are not warranted. These include contact points, fuses, and triacs.

OMEGA is glad to offer suggestions on the use of its various products. Nevertheless, OMEGA only warrants that the parts manufactured by it will be as specified and free of defects. OMEGA MAKES NO OTHER WARRANTIES OR REPRESENTATIONS OF ANY KIND WHATSOEVER, EXPRESSED OR IMPLIED, EXCEPT THAT OF TITLE AND ALL IMPLIED WARRANTIES INCLUDING ANY WARRANTY OF MERCHANTABILITY AND FITNESS FOR A PARTICULAR PURPOSE ARE HEREBY DISCLAIMED. LIMITATION OF LIABILITY: The remedies of purchaser set forth herein are exclusive and the total liability of OMEGA with respect to this order, whether based on contract, warranty, negligence, indemnification, strict liability or otherwise, shall not exceed the purchase price of the component upon which liability is based. In no event shall OMEGA be liable for consequential, incidental or special damages.

Every precaution for accuracy has been taken in the preparation of this manual; however, OMEGA ENGINEERING, INC. neither assumes responsibility for any omissions or errors that may appear nor assumes liability for any damages that result from the use of the products in accordance with the information contained in the manual.

SPECIAL CONDITION: Should this equipment be used in or with any nuclear installation or activity, purchaser will indemnify OMEGA and hold OMEGA harmless from any liability or damage whatsoever arising out of the use of the equipment in such a manner.

## Servicing USA and Canada: Call OMEGA Toll Free

### USA

One Omega Drive, Box 4147  
Stamford, CT 06907-0147  
Telephone: (203) 359-1644  
FAX: (203) 359-2700  
Sales Service: 1-800-675-6342 / 1-800-TC-OMEGA™  
Customer Service: 1-800-672-2278 / 1-800-622-BEST™  
Engineering Service: 800-877-4626 / 1-800-USA-WHIEEN™  
TELEX: 994048 EASTLINK 0296894 CABLE: OMEGA

### Canada

174 Beyer  
Laval (Quebec) H7L 5A1  
Telephone: (514) 856-4928  
FAX: (514) 856-6886

## Servicing Europe: United Kingdom Sales and Distribution Center

25 Swallowingham Road, Broughington Ashley, Leicestershire  
LE19 9TU, England  
Telephone: 44 (1455) 282520 FAX: 44 (1455) 283912

## RETURN REQUESTS / INQUIRIES

Direct all warranty and repair requests/inquiries to the OMEGA ENGINEERING Customer Service Department. BEFORE RETURNING ANY PRODUCT(S) TO OMEGA, PURCHASER MUST OBTAIN AN AUTHORIZED RETURN (AR) NUMBER FROM OMEGA'S CUSTOMER SERVICE DEPARTMENT (IN ORDER TO AVOID PROCESSING DELAYS). The assigned AR number should then be marked on the outside of the return package and on any correspondence.

FOR WARRANTY RETURNS, please have the following information available BEFORE contacting OMEGA:

1. P.O. number under which the product was PURCHASED.
2. Model and serial number of the product under warranty, and
3. Repair instructions and/or specific problems relative to the product.

OMEGA's policy is to make running changes, not model changes, whenever an improvement is possible. This affords our customers the latest in technology.

OMEGA is a registered trademark of OMEGA ENGINEERING, INC.

© Copyright 1995 OMEGA ENGINEERING, INC. All rights reserved. This documentation may not be copied, printed, reproduced, translated, or reduced in any form or medium or machine-readable form, in whole or in part, without prior written consent of OMEGA ENGINEERING, INC.

FOR NON-WARRANTY REPAIRS OR CALIBRATION, consult OMEGA for current repair/calibration charges. Have the following information available BEFORE contacting OMEGA:

1. P.O. number to cover the COST of the repair/calibration.
2. Model and serial number of product, and
3. Repair instructions and/or specific problems relative to the product.