

TWA3 SERIES TANK WEIGHING ASSEMBLY

UNPACKING

Remove the Packing list and verify that all equipment has been received. If there are any questions about the shipment, please call OMEGA Customer Service Department at 1-800-622-2378.

Upon receipt of shipment, inspect the container and equipment for any signs of damage. Take particular note of any evidence of rough handling in transit. Immediately report any damage to the shipping agent.

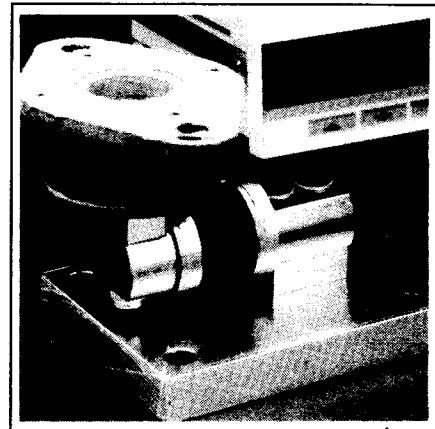
NOTE

The carrier will not honor any claims unless all shipping material is saved for their examination. After examining and removing contents, save packing material and carton in the event reshipment is necessary.

DESCRIPTION

The OMEGA® TWA3 Series Tank Weighing Assembly has 150% compression overload, has 50% side force protection, and complete environmental protection. It is available in the following models:

PART NUMBER	WEIGHT CAPACITY
TWA3-50	50 lb
TWA3-75	75 lb
TWA3-100	100 lb
TWA3-150	150 lb
TWA3-250	250 lb

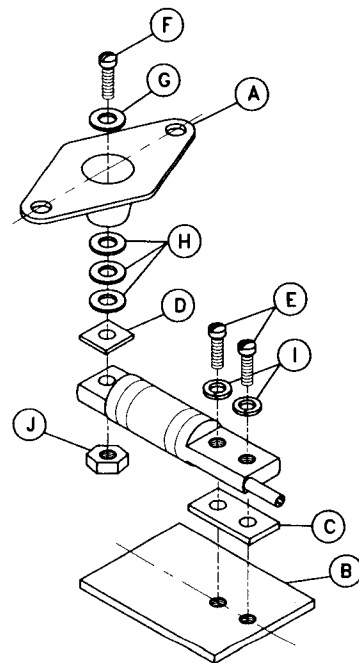


TWA3 ASSEMBLY WITH LCDA LOAD CELL

Make sure the TWA3 kit includes the following items:

CHECK BEFORE ASSEMBLING TANK WEIGHING ASSEMBLY

ITEM	DESCRIPTION	SIZE	QTY
A	Neoprene Mount	2 $\frac{3}{8}$ x 3 $\frac{3}{8}$ x 1 $\frac{1}{4}$	1
B	Base Plate	4 x 3 x $\frac{1}{2}$	1
C	Bottom Spacer	0.96 x 0.75 x 0.38	1
D	Top Spacer	0.75 x 0.46 x 0.38	1
E	Socket Cap Screw	$\frac{1}{4}$ -28 x 1 $\frac{1}{2}$	2
F	Socket Cap Screw	$\frac{1}{4}$ -28 x 1 $\frac{3}{4}$	1
G	Flat Washer	$\frac{1}{4}$ " ($\frac{5}{8}$ O.D.)	1
H	Fender Washer	$\frac{1}{4}$ " ($\frac{7}{8}$ O.D.)	3
I	Lockwasher	$\frac{1}{4}$ "	2
J	Locknut	$\frac{1}{4}$ -28	1



TWA3 SERIES

NEOPRENE MOUNT		
CAPACITY	COLOR	PART NUMBER
50 lb	Blue	52521
75 lb	Black	52522
100 lb	Red	52523
150 lb	Green	52524
250 lb	Gray	52525

ASSEMBLY PROCEDURE

The type of installation will govern the method of locating, attaching, and assembling the TWA3 series assembly. Always make sure that shock loads or impact loads do not occur during installation! An impact can cause a zero offset shift or possible failure of the load cell. To document a zero shift, record the load cell output prior to installation, then if any questions occur remove the cell and check the zero output again.

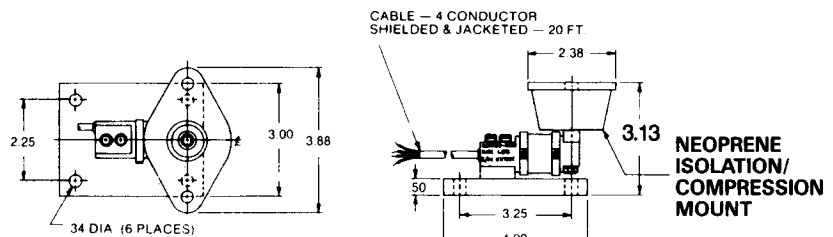
The neoprene boot should be mounted to the vessel, and the base plate to its support mount. Torque socket screws to 100 in-pounds.

INSTALLATION

Mounting surfaces for the neoprene boot and base plate must be level. If base is mounted on concrete, grouting is acceptable for leveling. Proper drainage should be provided so that assembly does not stand in water. If steam cleaning is used, a protective shroud for the weighing system is recommended. Use drip loops in the load cell cables to prevent water from dripping onto the load cell or junction box.

REPLACEMENT LOAD CELLS	
MODEL (DESCRIPTION)	PART NUMBER
TWA3-050	LCDA-50
TWA3-075	LCDA-75
TWA3-100	LCDA-100
TWA3-150	LCDA-150
TWA3-250	LCDA-250

DIMENSIONS



ALL DIMENSIONS IN INCHES

OMEGA
ENGINEERING, INC.
a OMEGA Technology Company
One Omega Drive, Box 4047
Stamford, Connecticut 06907-0047

Call OMEGA Toll Free*

Sales: 1-800-82-66342 / 1-800-TC-OMEGA

Customer Service: 1-800-622-2378 / 1-800-622-BEST

Engineering Assistance: 1-800-872-9436 / 1-800-USA-WHEN

*In CT: (203) 359-1660 CABLE: OMEGA EASYLINK: 62968934
And International TELEX: 996404 FAX: (203) 359-7700

Return Requests/Inquiries

Direct all warranty and repair requests/inquiries to OMEGA Customer Service Department, telephone number (203) 359-1660. BEFORE RETURNING ANY INSTRUMENT, PLEASE CONTACT THE OMEGA CUSTOMER SERVICE DEPARTMENT TO OBTAIN AN AUTHORIZED RETURN (AR) NUMBER. The designated AR number should then be marked on the outside of the return package.

To avoid processing delays, also please be sure to include:

1. Returnee's name, address, and phone number.
2. Model and Serial numbers.
3. Repair instructions.

OMEGA's policy is to make running changes, not model changes, whenever an improvement is possible. That way our customers get the latest in technology and engineering.

OMEGA® is a registered trademark of OMEGA ENGINEERING, INC.

© Copyright 1990 OMEGA ENGINEERING, INC. All rights reserved including illustrations. Nothing in this manual may be reproduced in any manner, either wholly or in part for any purpose whatsoever without written permission from OMEGA ENGINEERING, INC.

Printed in U.S.A.

WARRANTY

OMEGA warrants this unit to be free of defects in materials and workmanship and to give satisfactory service for a period of 13 months from date of purchase. OMEGA Warranty adds an additional one (1) month grace period to the normal one (1) year product warranty to cover handling and shipping time. This ensures that our customers receive maximum coverage on each product. If the unit should malfunction, it must be returned to the factory for evaluation. Our Customer Service Department will issue an Authorized Return (AR) number immediately upon phone or written request. Upon examination by OMEGA, if the unit is found to be defective it will be repaired or replaced at no charge. However, this WARRANTY is VOID if the unit shows evidence of having been tampered with or shows evidence of being damaged as a result of excessive corrosion, or current, heat, moisture or vibration, improper specification, misapplication, misuse or other operating conditions outside of OMEGA's control. Components which wear or which are damaged by misuse are not warranted. These include contact points, fuses, and triacs.

THESE UNITS ARE INHERENTLY DANGEROUS AND ARE INTENDED TO BE INSTALLED AND USED ONLY BY QUALIFIED PERSONNEL. NO WARRANTY EXTENDED HEREIN WILL APPLY IF SUCH UNIT IS INSTALLED OR USED BY UNQUALIFIED PERSONNEL. THERE ARE NO WARRANTIES EXCEPT AS STATED HEREIN. THERE ARE NO OTHER WARRANTIES, EXPRESSED OR IMPLIED, INCLUDING BUT NOT LIMITED TO THE IMPLIED WARRANTIES OF MERCHANTABILITY AND OF FITNESS FOR A PARTICULAR PURPOSE. OMEGA ENGINEERING, INC. IS NOT RESPONSIBLE FOR ANY DAMAGES OR LOSSES CAUSED TO OTHER EQUIPMENT, WHETHER DIRECT, INDIRECT, INCIDENTAL, SPECIAL OR CONSEQUENTIAL, WHICH THE PURCHASER MAY EXPERIENCE AS A RESULT OF THE INSTALLATION OR USE OF THE PRODUCT. THE BUYER'S SOLE REMEDY FOR ANY BREACH OF THIS AGREEMENT BY OMEGA ENGINEERING, INC. OR ANY BREACH OF ANY WARRANTY BY OMEGA ENGINEERING, INC. SHALL NOT EXCEED THE PURCHASE PRICE PAID BY THE PURCHASER TO OMEGA ENGINEERING, INC. FOR THE UNIT OR UNITS OR EQUIPMENT DIRECTLY AFFECTED BY SUCH BREACH.

EVERY PRECAUTION FOR ACCURACY HAS BEEN TAKEN IN THE PREPARATION OF THIS MANUAL. HOWEVER, OMEGA ENGINEERING, INC. NEITHER ASSUMES RESPONSIBILITY FOR ANY OMISSIONS OR ERRORS THAT MAY APPEAR NOR ASSUMES LIABILITY FOR ANY DAMAGES THAT RESULT FROM THE USE OF THE PRODUCTS IN ACCORDANCE WITH THE INFORMATION CONTAINED IN THE MANUAL.