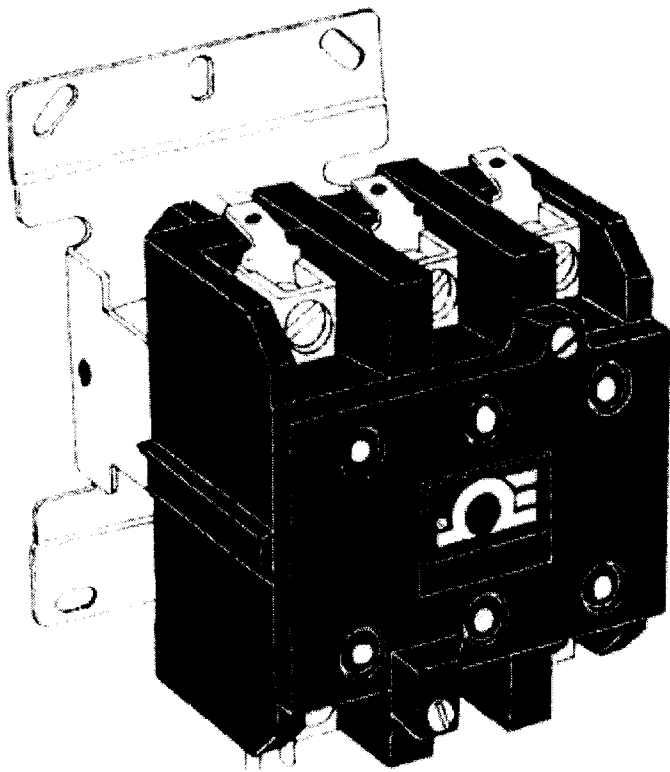


# User's Guide



*Shop online at*

**omega.com<sup>®</sup>**

Ω OMEGA<sup>®</sup>

*omega.com*

*e-mail: info@omega.com*

*For latest product manuals:*

*omegamanual.info*

**ISO 9001**  
CERTIFIED  
CORPORATE QUALITY

STAMFORD, CT

**ISO 9002**  
CERTIFIED  
CORPORATE QUALITY

MANCHESTER, UK

## **MC1, MC2, MC3** **Magnetic Contactors**



OMEGAnet® On-Line Service  
omega.com

Internet e-mail  
info@omega.com

### Servicing North America:

**U.S.A.: ISO 9001 Certified**  
One Omega Drive, Box 4047  
Stamford, CT 06907-0047  
Tel: (203) 359-1660  
FAX: (203) 359-7700  
e-mail: info@omega.com

**Canada:**  
976 Bergar  
Laval (Quebec) H7L 5A1, Canada  
Tel: (514) 856-6928  
FAX: (514) 856-6886  
e-mail: info@omega.ca

### For immediate technical or application assistance:

**U.S.A. and Canada:**  
Sales Service: 1-800-826-6342 / 1-800-TC-OMEGA®  
Customer Service: 1-800-622-2378 / 1-800-622-BEST®  
Engineering Service: 1-800-872-9436 / 1-800-USA-WHEN®

**Mexico:**  
En Español: (001) 203-359-7803  
FAX: (001) 203-359-7807  
e-mail: espanol@omega.com  
info@omega.com.mx

### Servicing Europe:

**Czech Republic:**  
Frystatska 184, 733 01 Karvina, Czech Republic  
Tel: +420 (0)59 6311899 FAX: +420 (0)59 6311114  
Toll Free: 0800-1-66342 e-mail: info@omegashop.cz

**Germany/Austria:**  
Daimlerstrasse 26, D-75392  
Deckenpfronn, Germany  
Tel: +49 (0)7056 9398-0 FAX: +49 (0)7056 9398-29  
Toll Free in Germany: 0800 639 7678  
e-mail: info@omega.de

**United Kingdom:**  
ISO 9002 Certified  
One Omega Drive  
River Bend Technology Centre  
Northbank, Irlam  
Manchester M44 5BD United Kingdom  
Tel: +44 (0)161 777 6611 FAX: +44 (0)161 777 6622  
Toll Free in United Kingdom: 0800-488-488  
e-mail: sales@omega.co.uk

---

It is the policy of OMEGA Engineering, Inc. to comply with all worldwide safety and EMC/EMI regulations that apply. OMEGA is constantly pursuing certification of its products to the European New Approach Directives. OMEGA will add the CE mark to every appropriate device upon certification. The information contained in this document is believed to be correct, but OMEGA accepts no liability for any errors it contains, and reserves the right to alter specifications without notice.

**WARNING:** These products are not designed for use in, and should not be used for, human applications.

	<b>Page</b>
<b>Section 1 Introduction</b>	<b>1</b>
1.1 General Description .....	1
1.2 Configurations.....	1
1.3 Features .....	1
<b>Section 2 Installation</b>	<b>2</b>
2.1 Unpacking .....	2
2.2 Mounting .....	2
2.3 Fusing .....	3
2.4 Wiring .....	3
<b>Section 3 Selection and Application</b>	<b>7</b>
3.1 Voltage Rating of Contacts .....	7
3.2 Applications Rating Guide .....	7
<b>Section 4 Service Information</b>	<b>9</b>
4.1 Maintenance .....	9
4.2 Routine Inspections .....	9
<b>Section 5 Specifications</b>	<b>10</b>

## **SECTION 1 INTRODUCTION**

### **1.1 General Description**

MC1, MC2, and MC3 magnetic contactors are actuated by either 120 Vac or 240 Vac control signals. They are designed for resistive (non-inductive) loads, however can be used for inductive loads by derating-see Table 2, in Section 5.

These contactors are well suited for temperature control applications where heat is supplied by electric resistance heaters. Use virtually any OMEGA® temperature controller with a relay output and wire-up to the MC contactor using the wiring schematics in Section 2.

### **1.2 Configurations**

An OMEGA® magnetic controller is a two or three-pole normally open relay, capable of more than 500,000 cycles of operation. They are available to operate from either 120 V or 240 V alternating current (Vac).

A NEMA 1 enclosure is available for MC2 style contactors.

### **1.3 Features**

1. Efficient low Va magnet design assures long mechanical life.
2. Silver cadmium oxide contacts have superior weld resistance, high conductivity and high resistance to arc erosion.
3. 600 volt spacing gives protection against arc over.
4. Efficient, cool running coils have double quick connects as standard.
5. Straight-thru wiring and easily accessible screws make wiring easy.

## **SECTION 2 INSTALLATION**

### **2.1 Unpacking**

Remove the Packing List and verify that you have received all equipment. If you have any questions about your shipment, please call the OMEGA® Customer Service Department.

When you receive the shipment, inspect the container and equipment for any signs of damage. Note any evidence of rough handling in transit. Immediately report any damage to the shipping agent.

---

**NOTE**

The carrier will not honor any claims unless all shipping material is saved for their examination. After examining and removing contents, save packing material and carton in the event reshipment is necessary.

---

### **2.2 Mounting**

1. Check that the load does not exceed the rating of the contacts.
2. Mount contactor upright on rigid vertical support.
3. Remove shim or spacer used to block armature open during shipment.
4. Be sure that voltage on coil label agrees with control voltage. Side by side grouping is possible since all terminals are front accessible.

The magnetic contactor can be located close to the load, minimizing the lengths of power cables. The actuating device, such as a temperature controller, can then be located in an area more convenient to the operator.

---

**WARNING**

---

WARNING! Disconnect voltage before working on electrical equipment.

---

### **2.3 Fusing**

All magnetic contactors must be fused when they are wired by the user. Fuse rating not to exceed the contact rating.

---

**NOTE**

---

NOTE: 120 V circuit requires one fuse. 240 V circuit requires two fuses; one in each line. A three phase circuit requires three fuses; one in each line.

---

### **2.4 Wiring**

Adding an OMEGA<sup>®</sup> magnetic contactor to the output of a temperature controller is the best way to extend the temperature controller's power switching capabilities. See Figure 2-1 for 120 Vac load, Figure 2-2 for 240 Vac loads and Figure 2-3 for 240 Vac three phase loads.

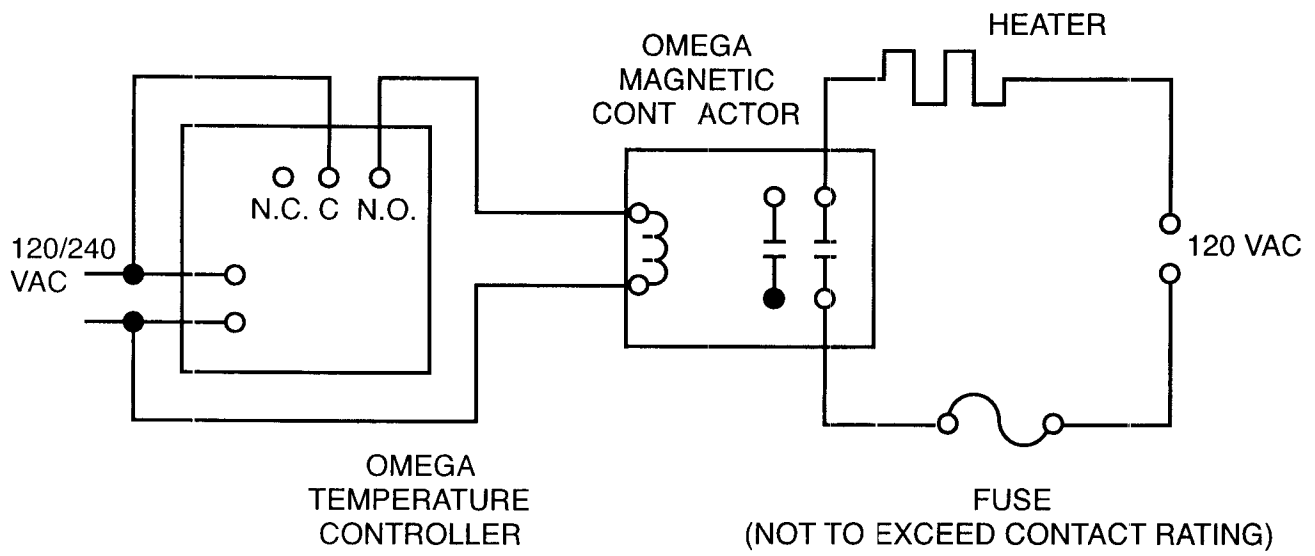


Figure 2-1. Wiring For 120 Vac Load

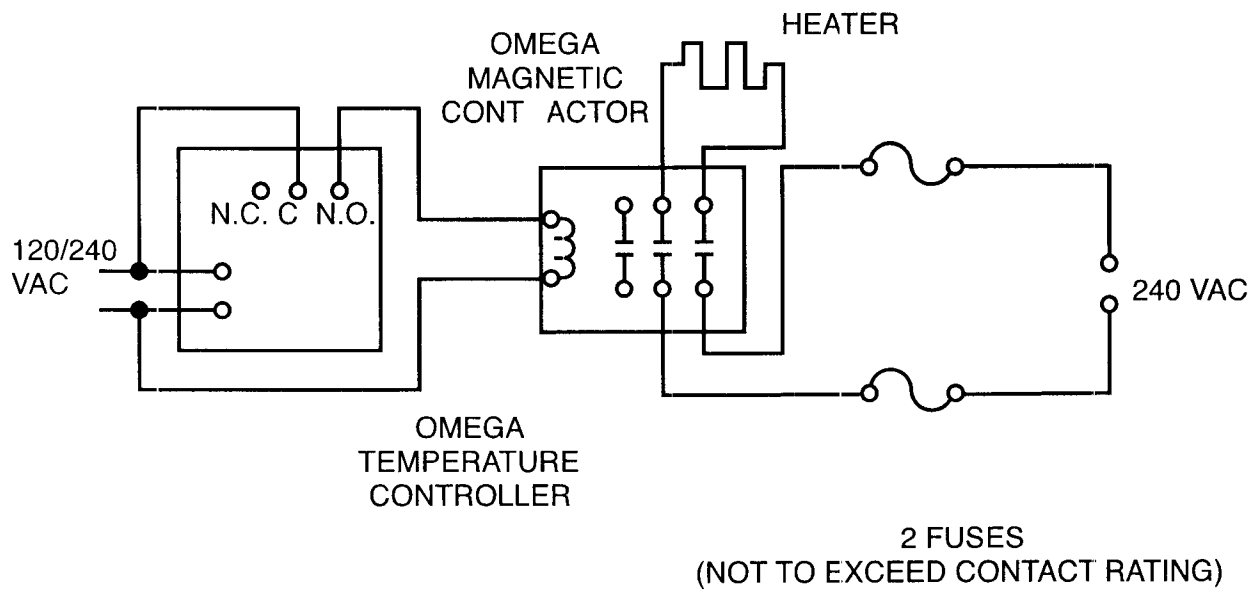


Figure 2-2. Wiring For 240 Vac Load



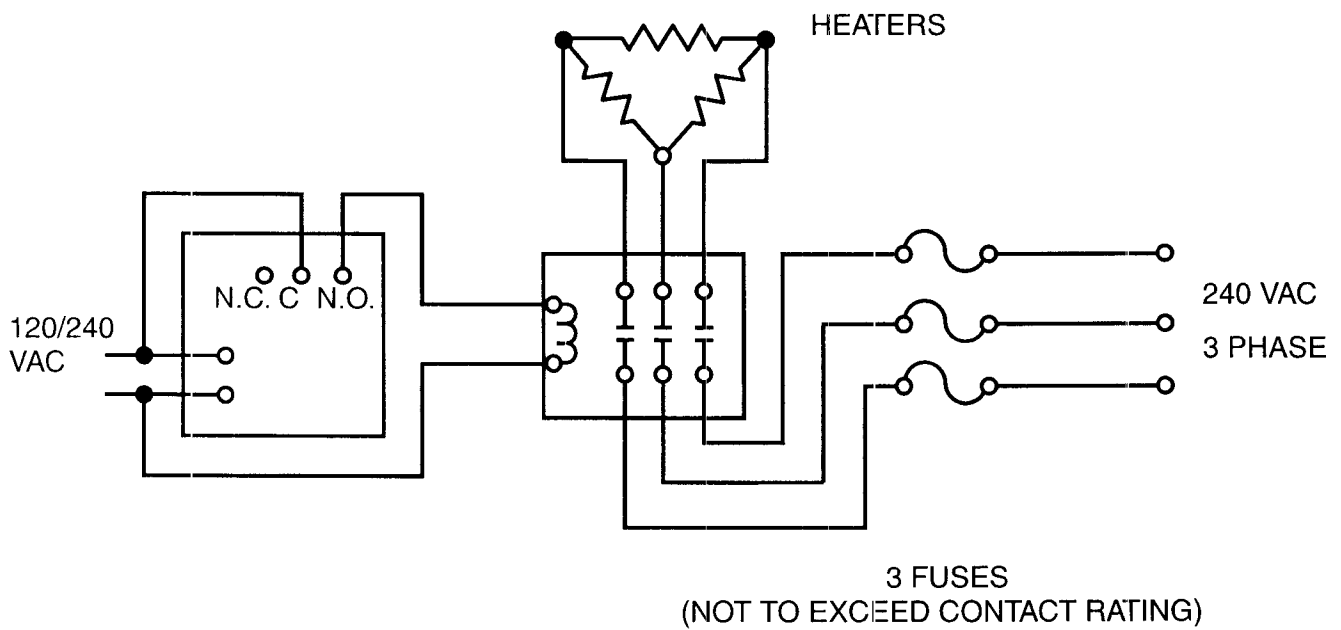


Figure 2-3. Wiring For 240 Vac Three Phase Load



**Table 1**  
**Rating Guide**

	MC1-2-30-120	MC2-2-40-120	MC2-3-40-120	MC2-3-50-240	MC3-3-75-240
Catalog Number	-240	-240	-240		
Non-inductive Amps	30	40	40	50	75
Full Load Amps	20	30	30	40	60
Locked Rotor Amps at					
240V	120	180	180	240	360
480V	100	150	150	200	300
600V	80	120	120	160	240
No. of Poles	2	2	3	3	3
Wire Size	16-8	16-8	16-8	14-6	14-2

NOTES: Contacts are rated to 600 V MAX.

Poles cannot be used in parallel to increase current rating.

Contactors do not provide overload protection for motors.

Contactors must be mounted vertically.

## SECTION 4 SERVICE INFORMATION

### 4.1 Maintenance

In many applications, the magnetic contactor can be expected to be trouble free during the operating life of the equipment it is used with. However, periodic inspections of the equipment should include routine inspection of the contactor.

### 4.2 Routine Inspection

---

**WARNING**

---

Disconnect primary power source prior to inspection.

---

1. Never oil any part of the magnetic contactor.
2. Periodic cleaning by blowing out dust, and particles, which may have accumulated within the contactor.
3. Check surrounding area for new sources of dust, oil, or corrosive vapors not present at the time of installation. The enclosure may have been satisfactory when the contactor was installed, however, the proximity of new production equipment or processes might, for example, make it necessary to change enclosures or to shield the existing one from oil spray or excessive dust.
4. Inspect insulation on wires. Conductors must be clear of all moving parts.
5. Examine contacts-cleaning is not required since the contact material is a special pre-oxidized Silver cadmium oxide alloy. Replacement is required only when the contact material is almost worn down to the backing.

6. Check magnet pole faces for oil deposits. If oil is present, carefully clean pole faces with solvent. This will prevent an accumulation of dust and a potentially sticky magnet.
7. Check terminal screws for tightness.

## SECTION 5 SPECIFICATIONS

**Table 2 Electrical**

	MC1-2-30-120	MC2-2-40-120	MC2-3-40-120	MC2-3-50-240	MC3-3-75-240
Catalog Number	-240	-240	-240		
Non-inductive Amps	30	40	40	50	75
Full Load Amps	20	30	30	40	60
Locked Rotor Amps at					
240V	120	180	180	240	360
480V	100	150	150	200	300
600V	80	120	120	160	240
No. of Poles	2	2	3	3	3
Wire Size	16-8	16-8	16-8	14-6	14-2
Inrush Va	37.4	52	52	92	200
Sealed VA	7.68	6.2	6.2	10	31
Sealed Watts	2.8	2.5	2.5	4.0	13.5
Pull-in Volts	80%	85%	85%	76%	85%
Drop-out Volts	53%	50%	50%	58%	50%

NOTES: Contacts are rated to 600 V MAX.

Poles cannot be used in parallel to increase current rating.

Contactors do not provide overload protection for motors.

Contactors must be mounted vertically.

## **SECTION 5 SPECIFICATIONS (Cont'd)**

### **Outline Dimensions:**

Models MC1-2-30-120 and MC1-2-30-240 (See Figure 5-1).

Models MC2-2-40-120, MC2-2-40-240, MC2-3-40-120, MC2-3-40-240, and MC2-3-50-240 (See Figure 5-2).

Model MC3-3-75-240 (See Figure 5-3).

Enclosure for MC2 Models only (See Figure 5-4).

### **Electrical:**

**Contacts:** 600 V MAX.

**Magnet Coil:** Single voltage, 120 or 240 Vac, 50/60 Hertz.

**Mechanical Life:** Over 500,000 operations.

Contactors are designed for "no contact" potential when mounted on vertical panel.

PRESSURE CONNECTOR FOR #10-32 SCREWS

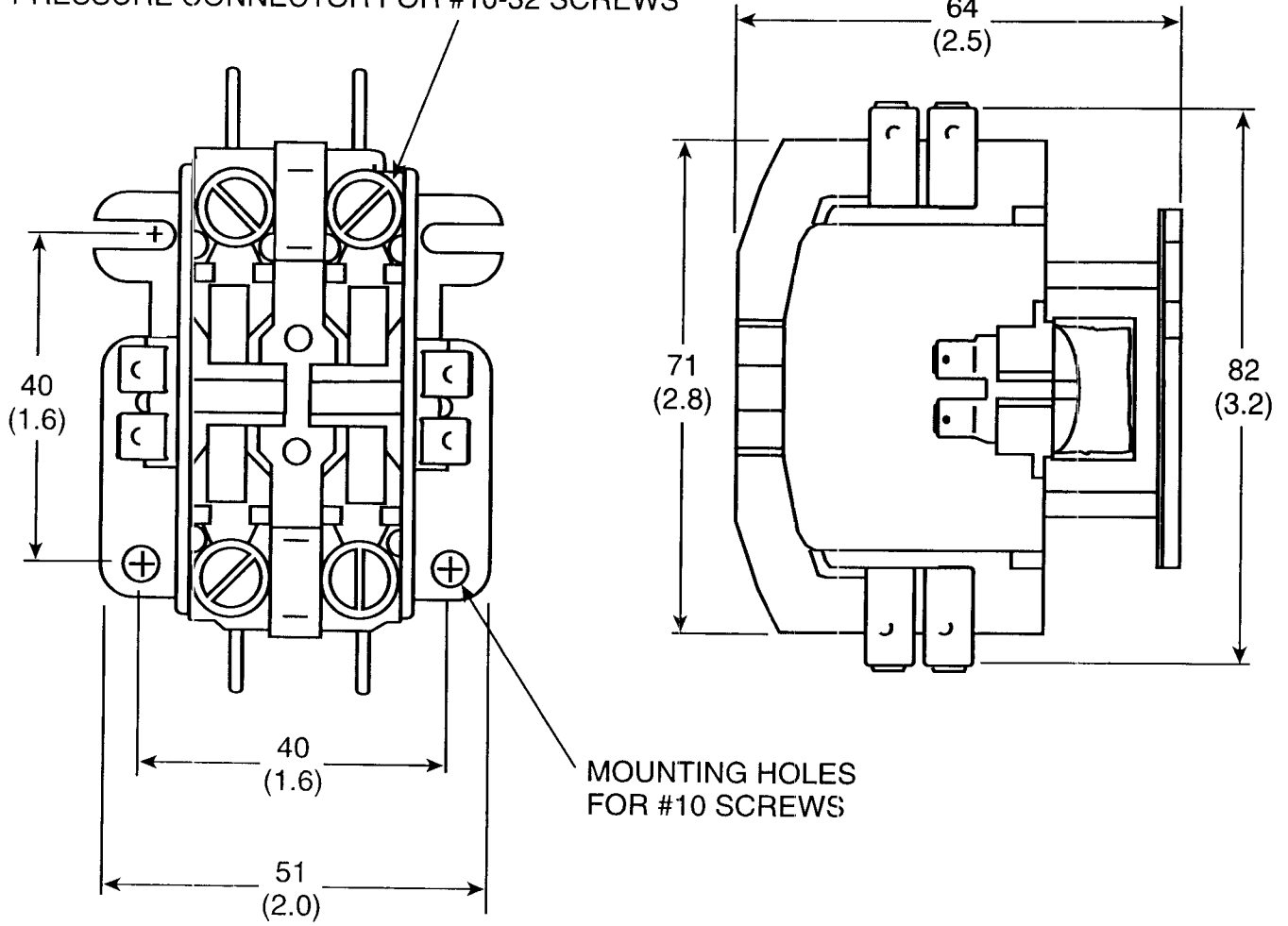


Figure 5-1. Dimensions for Style MC1

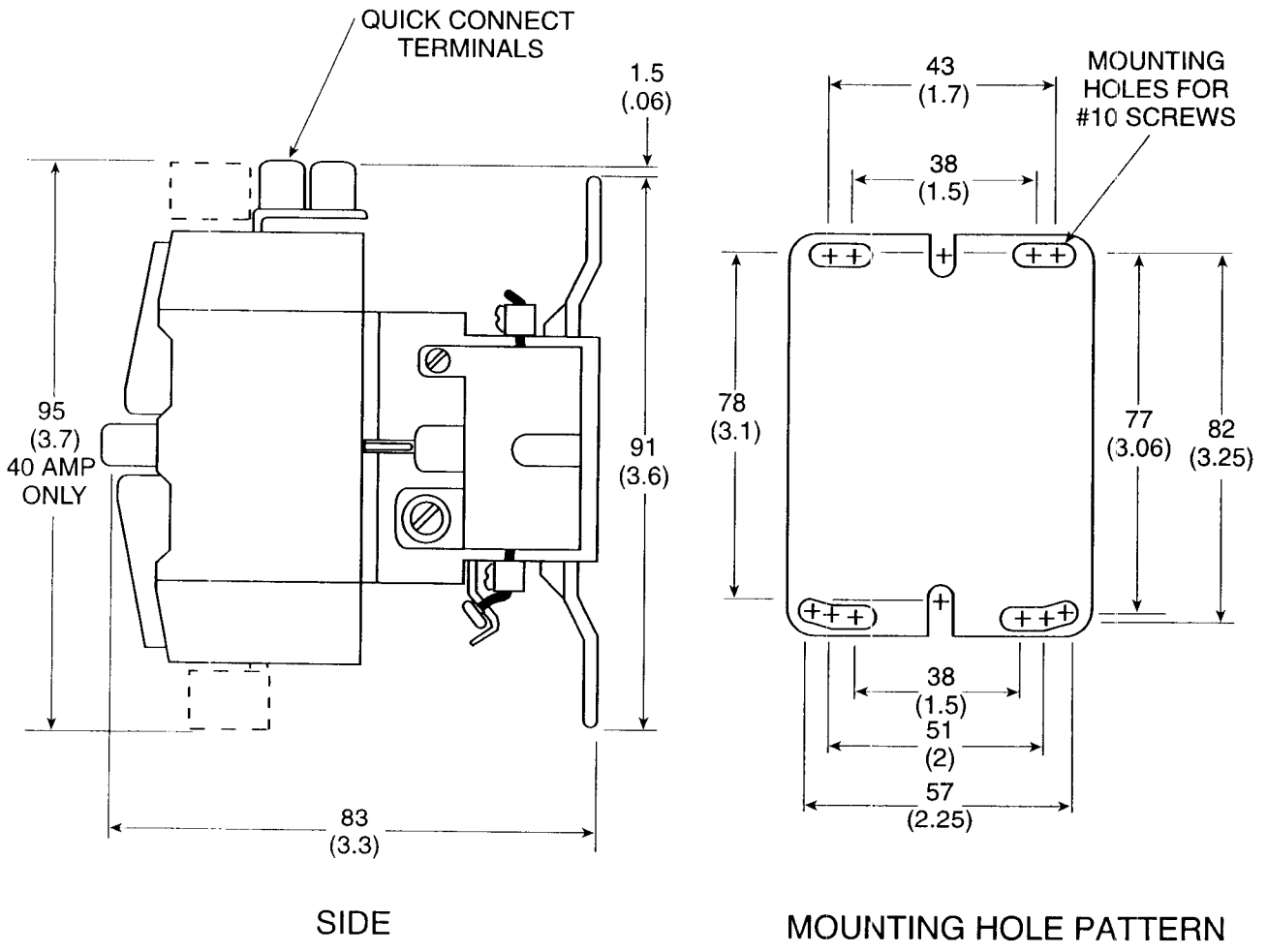


Figure 5-2. Dimensions for Style MC2



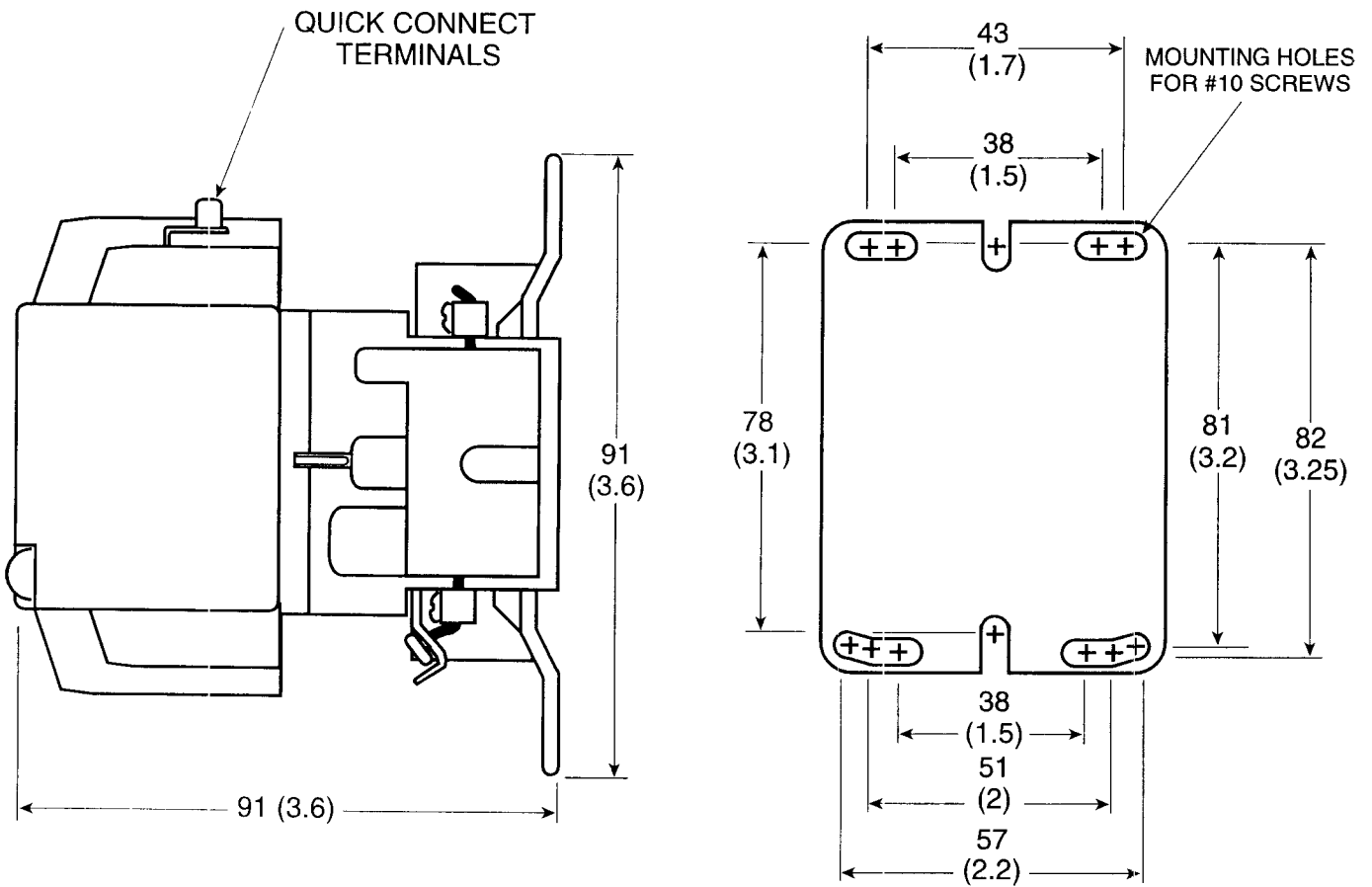


Figure 5-3. Dimensions for Style MC3

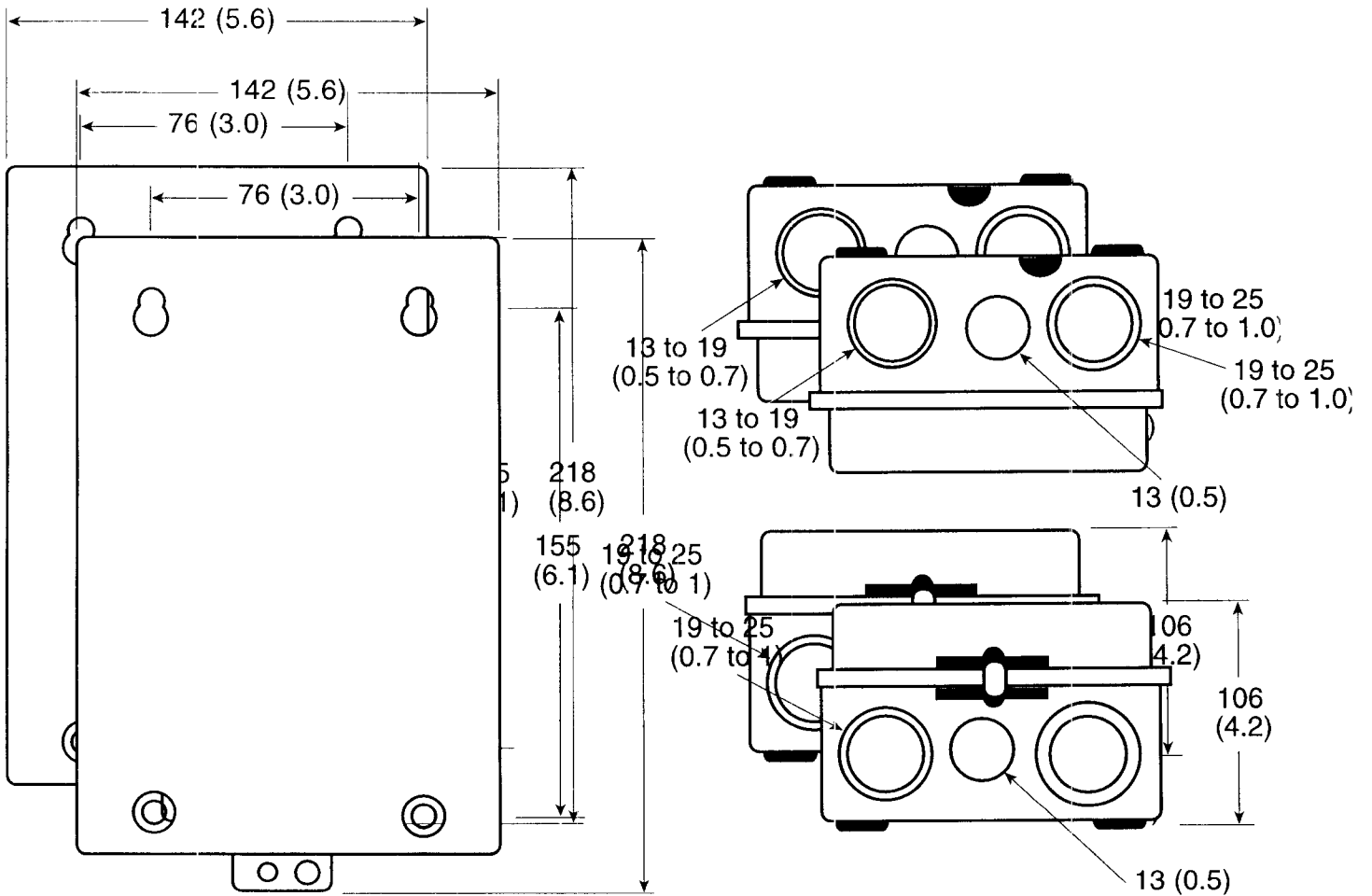


Figure 5-4. NEMA 1 Enclosure Style EN-MC2

## WARRANTY/DISCLAIMER

OMEGA ENGINEERING, INC. warrants this unit to be free of defects in materials and workmanship for a period of **13 months** from date of purchase. OMEGA's WARRANTY adds an additional one (1) month grace period to the normal **one (1) year product warranty** to cover handling and shipping time. This ensures that OMEGA's customers receive maximum coverage on each product.

If the unit malfunctions, it must be returned to the factory for evaluation. OMEGA's Customer Service Department will issue an Authorized Return (AR) number immediately upon phone or written request. Upon examination by OMEGA, if the unit is found to be defective, it will be repaired or replaced at no charge. OMEGA's WARRANTY does not apply to defects resulting from any action of the purchaser, including but not limited to mishandling, improper interfacing, operation outside of design limits, improper repair, or unauthorized modification. This WARRANTY is VOID if the unit shows evidence of having been tampered with or shows evidence of having been damaged as a result of excessive corrosion; or current, heat, moisture or vibration; improper specification; misapplication; misuse or other operating conditions outside of OMEGA's control. Components in which wear is not warranted, include but are not limited to contact points, fuses, and triacs.

**OMEGA is pleased to offer suggestions on the use of its various products. However, OMEGA neither assumes responsibility for any omissions or errors nor assumes liability for any damages that result from the use of its products in accordance with information provided by OMEGA, either verbal or written. OMEGA warrants only that the parts manufactured by the company will be as specified and free of defects. OMEGA MAKES NO OTHER WARRANTIES OR REPRESENTATIONS OF ANY KIND WHATSOEVER, EXPRESSED OR IMPLIED, EXCEPT THAT OF TITLE, AND ALL IMPLIED WARRANTIES INCLUDING ANY WARRANTY OF MERCHANTABILITY AND FITNESS FOR A PARTICULAR PURPOSE ARE HEREBY DISCLAIMED. LIMITATION OF LIABILITY: The remedies of purchaser set forth herein are exclusive, and the total liability of OMEGA with respect to this order, whether based on contract, warranty, negligence, indemnification, strict liability or otherwise, shall not exceed the purchase price of the component upon which liability is based. In no event shall OMEGA be liable for consequential, incidental or special damages.**

CONDITIONS: Equipment sold by OMEGA is not intended to be used, nor shall it be used: (1) as a "Basic Component" under 10 CFR 21 (NRC), used in or with any nuclear installation or activity; or (2) in medical applications or used on humans. Should any Product(s) be used in or with any nuclear installation or activity, medical application, used on humans, or misused in any way, OMEGA assumes no responsibility as set forth in our basic WARRANTY/DISCLAIMER language, and, additionally, purchaser will indemnify OMEGA and hold OMEGA harmless from any liability or damage whatsoever arising out of the use of the Product(s) in such a manner.

## RETURN REQUESTS/INQUIRIES

Direct all warranty and repair requests/inquiries to the OMEGA Customer Service Department. BEFORE RETURNING ANY PRODUCT(S) TO OMEGA, PURCHASER MUST OBTAIN AN AUTHORIZED RETURN (AR) NUMBER FROM OMEGA'S CUSTOMER SERVICE DEPARTMENT (IN ORDER TO AVOID PROCESSING DELAYS). The assigned AR number should then be marked on the outside of the return package and on any correspondence.

The purchaser is responsible for shipping charges, freight, insurance and proper packaging to prevent breakage in transit.

FOR **WARRANTY** RETURNS, please have the following information available BEFORE contacting OMEGA:

1. Purchase Order number under which the product was PURCHASED,
2. Model and serial number of the product under warranty, and
3. Repair instructions and/or specific problems relative to the product.

FOR **NON-WARRANTY** REPAIRS, consult OMEGA for current repair charges. Have the following information available BEFORE contacting OMEGA:

1. Purchase Order number to cover the COST of the repair,
2. Model and serial number of the product, and
3. Repair instructions and/or specific problems relative to the product.

OMEGA's policy is to make running changes, not model changes, whenever an improvement is possible. This affords our customers the latest in technology and engineering.

OMEGA is a registered trademark of OMEGA ENGINEERING, INC.

© Copyright 2006 OMEGA ENGINEERING, INC. All rights reserved. This document may not be copied, photocopied, reproduced, translated, or reduced to any electronic medium or machine-readable form, in whole or in part, without the prior written consent of OMEGA ENGINEERING, INC.

# Where Do I Find Everything I Need for Process Measurement and Control? **OMEGA...Of Course!**

*Shop online at [omega.com](http://omega.com)*

## **TEMPERATURE**

- Thermocouple, RTD & Thermistor Probes, Connectors, Panels & Assemblies
- Wire: Thermocouple, RTD & Thermistor
- Calibrators & Ice Point References
- Recorders, Controllers & Process Monitors
- Infrared Pyrometers

## **PRESSURE, STRAIN AND FORCE**

- Transducers & Strain Gages
- Load Cells & Pressure Gages
- Displacement Transducers
- Instrumentation & Accessories

## **FLOW/LEVEL**

- Rotameters, Gas Mass Flowmeters & Flow Computers
- Air Velocity Indicators
- Turbine/Paddlewheel Systems
- Totalizers & Batch Controllers

## **pH/CONDUCTIVITY**

- pH Electrodes, Testers & Accessories
- Benchtop/Laboratory Meters
- Controllers, Calibrators, Simulators & Pumps
- Industrial pH & Conductivity Equipment

## **DATA ACQUISITION**

- Data Acquisition & Engineering Software
- Communications-Based Acquisition Systems
- Plug-in Cards for Apple, IBM & Compatibles
- Datalogging Systems
- Recorders, Printers & Plotters

## **HEATERS**

- Heating Cable
- Cartridge & Strip Heaters
- Immersion & Band Heaters
- Flexible Heaters
- Laboratory Heaters

## **ENVIRONMENTAL MONITORING AND CONTROL**

- Metering & Control Instrumentation
- Refractometers
- Pumps & Tubing
- Air, Soil & Water Monitors
- Industrial Water & Wastewater Treatment
- pH, Conductivity & Dissolved Oxygen Instruments

M0132/0502