

It is the policy of OMEGA Engineering, Inc. to comply with all worldwide safety and EMC/EMI requirements that apply. OMEGA is constantly pursuing perfection of its products to the European certification. The information contained in this document is believed to be correct, but OMEGA accepts no liability for any errors it contains, and reserves the right to alter specifications without notice. **WARNING:** These products are not designed for use in, and should not be used for, human applications.

© Copyright 2011 OMEGA ENGINEERING, INC. All rights reserved. This document may not be copied, reproduced, translated, or reduced to any electronic medium or made available in any form, in whole or in part, without the prior written consent of OMEGA ENGINEERING, INC.

OMEGA's policy is to make running changes, not model changes, whenever an improvement is possible. This allows our customers the latest in technology and engineering.

OMEGA is a registered trademark of OMEGA ENGINEERING, INC.

1. Repair instructions and/or specific problems relative to the product.
 2. Model and serial number of the product, and of the repair.
 3. Model and serial number of the product, and of the repair.
 4. Purchase Order number to cover the COST of the repair.

FOR NON-WARRANTY REPAIRS, please have the following information available BEFORE contacting OMEGA:
 1. Product name under which the purchase was PLACED.
 2. Model and serial number of the product.
 3. Repair instructions and/or specific problems relative to the product.

Direct all warranty and repair requests/inquiries to the OMEGA Customer Service Department. RETURN (AIR NUMBER FROM OMEGA'S CUSTOMER SERVICE DEPARTMENT IN ORDER TO AVOID PROCESSING DELAYS). The assigned Air number should then be marked on the outside of the return package and on any correspondence. The purchaser is responsible for shipping charges, freight, insurance and proper packaging to prevent breakage in transit.

FOR NON-WARRANTY REPAIRS, consult OMEGA for current repair charges. Have the following information available BEFORE contacting OMEGA:
 1. Product name under which the purchase was PLACED.
 2. Model and serial number of the product, and of the repair.
 3. Model and serial number of the product, and of the repair.
 4. Purchase Order number to cover the COST of the repair.

OMEGA neither assumes responsibility for any omissions or errors nor assumes liability for any damages that result from the use of its products in accordance with information provided by OMEGA, either verbal or written. OMEGA warrants only that the parts manufactured by the company will be as specified and free of defects. OMEGA MAKES NO OTHER WARRANTIES OR REPRESENTATIONS OF ANY KIND WHATSOEVER, EXPRESSED OR IMPLIED, EXCEPT THAT OF TITLE, AND ALL IMPLIED WARRANTIES INCLUDING ANY WARRANTY OF MERCHANTABILITY AND FITNESS FOR A PARTICULAR PURPOSE ARE HEREBY DISCLAIMED. OMEGA'S LIABILITY IS LIMITED TO THE PURCHASE PRICE OF THE COMPONENT UPON WHICH LIABILITY IS BASED. IN NO EVENT SHALL OMEGA BE LIABLE FOR CONSEQUENTIAL, INCIDENTAL OR SPECIAL DAMAGES. OMEGA's Equipment sold by OMEGA is not intended to be used: (1) as a "Basic Component" under 19 CFR 21 (NRC), used in or with any nuclear installation or activity; (2) in medical applications or for use on humans. Should any product be used in any way, OMEGA assumes no responsibility as set forth in our WARRANTY/DISCLAIMER with any nuclear installation or activity, medical application, used on humans, or used in any way, OMEGA assumes no responsibility as set forth in our WARRANTY/DISCLAIMER. OMEGA's Equipment sold by OMEGA is not intended to be used: (1) as a "Basic Component" under 19 CFR 21 (NRC), used in or with any nuclear installation or activity; (2) in medical applications or for use on humans. Should any product be used in any way, OMEGA assumes no responsibility as set forth in our WARRANTY/DISCLAIMER with any nuclear installation or activity, medical application, used on humans, or used in any way, OMEGA assumes no responsibility as set forth in our WARRANTY/DISCLAIMER.

OMEGA is pleased to offer suggestions on the use of its various products. OMEGA neither assumes responsibility for any omissions or errors nor assumes liability for any damages that result from the use of its products in accordance with information provided by OMEGA, either verbal or written. OMEGA warrants only that the parts manufactured by the company will be as specified and free of defects. OMEGA MAKES NO OTHER WARRANTIES OR REPRESENTATIONS OF ANY KIND WHATSOEVER, EXPRESSED OR IMPLIED, EXCEPT THAT OF TITLE, AND ALL IMPLIED WARRANTIES INCLUDING ANY WARRANTY OF MERCHANTABILITY AND FITNESS FOR A PARTICULAR PURPOSE ARE HEREBY DISCLAIMED. OMEGA'S LIABILITY IS LIMITED TO THE PURCHASE PRICE OF THE COMPONENT UPON WHICH LIABILITY IS BASED. IN NO EVENT SHALL OMEGA BE LIABLE FOR CONSEQUENTIAL, INCIDENTAL OR SPECIAL DAMAGES. OMEGA's Equipment sold by OMEGA is not intended to be used: (1) as a "Basic Component" under 19 CFR 21 (NRC), used in or with any nuclear installation or activity; (2) in medical applications or for use on humans. Should any product be used in any way, OMEGA assumes no responsibility as set forth in our WARRANTY/DISCLAIMER with any nuclear installation or activity, medical application, used on humans, or used in any way, OMEGA assumes no responsibility as set forth in our WARRANTY/DISCLAIMER.

OMEGA Engineering, Inc. warrants this unit to be free of defects in materials and workmanship for a period of 13 months from date of purchase. OMEGA's Warranty adds an additional one (1) month grace period to the normal 13 month product warranty coverage on each unit and shipping time. This ensures that OMEGA's customers receive maximum coverage on each product.

When a Customer returns a unit to the factory for evaluation, OMEGA's Customer Service Department will issue an Authorized Return (AR) number immediately upon phone or written request. Upon examination by OMEGA, if the unit is found to be defective, it will be repaired or replaced at no charge. OMEGA's WARRANTY does not apply to defects resulting from any action of the purchaser, including but not limited to mishandling, improper installation, operation outside of design limits, improper repair, or unauthorized modification. This WARRANTY is VOID if the unit shows evidence of having been tampered with or shows evidence of having been damaged as a result of excessive corrosion, or current, heat, moisture or vibration; improper use, misuse or other operating conditions. OMEGA's control components in which wear is not warranted, include but are not limited to contact points, fuses, and traces.

OMEGA neither assumes responsibility for any omissions or errors nor assumes liability for any damages that result from the use of its various products. OMEGA neither assumes responsibility for any omissions or errors nor assumes liability for any damages that result from the use of its products in accordance with information provided by OMEGA, either verbal or written. OMEGA warrants only that the parts manufactured by the company will be as specified and free of defects. OMEGA MAKES NO OTHER WARRANTIES OR REPRESENTATIONS OF ANY KIND WHATSOEVER, EXPRESSED OR IMPLIED, EXCEPT THAT OF TITLE, AND ALL IMPLIED WARRANTIES INCLUDING ANY WARRANTY OF MERCHANTABILITY AND FITNESS FOR A PARTICULAR PURPOSE ARE HEREBY DISCLAIMED. OMEGA'S LIABILITY IS LIMITED TO THE PURCHASE PRICE OF THE COMPONENT UPON WHICH LIABILITY IS BASED. IN NO EVENT SHALL OMEGA BE LIABLE FOR CONSEQUENTIAL, INCIDENTAL OR SPECIAL DAMAGES. OMEGA's Equipment sold by OMEGA is not intended to be used: (1) as a "Basic Component" under 19 CFR 21 (NRC), used in or with any nuclear installation or activity; (2) in medical applications or for use on humans. Should any product be used in any way, OMEGA assumes no responsibility as set forth in our WARRANTY/DISCLAIMER with any nuclear installation or activity, medical application, used on humans, or used in any way, OMEGA assumes no responsibility as set forth in our WARRANTY/DISCLAIMER.

WARRANTY/DISCLAIMER

Where Do I Find Everything I Need for Process Measurement and Control? OMEGA...Of Course!
 Shop online at omega.comSM

- TEMPERATURE**
- Thermocouple, RTD & Thermistor Probes, Connectors, Panels & Assemblies
 - Wire: Thermocouple, RTD & Thermistor
 - Calibrators & Ice Point References
 - Recorders, Controllers & Process Monitors
 - Infrared Pyrometers
- PRESSURE, STRAIN AND FORCE**
- Transducers & Strain Gages
 - Load Cells & Pressure Gages
 - Displacement Transducers
 - Instrumentation & Accessories
- FLOW/LEVEL**
- Rotameters, Gas Mass Flowmeters & Flow Computers
 - Air Velocity Indicators
 - Turbine/Paddlewheel Systems
 - Totalizers & Batch Controllers
- pH/CONDUCTIVITY**
- pH Electrodes, Testers & Accessories
 - Benchtop/Laboratory Meters
 - Controllers, Calibrators, Simulators & Pumps
 - Industrial pH & Conductivity Equipment

- DATA ACQUISITION**
- Data Acquisition & Engineering Software
 - Communications-Based Acquisition Systems
 - Plug-in Cards for Apple, IBM & Compatibles
 - Data Logging Systems
 - Recorders, Printers & Plotters
- HEATERS**
- Heating Cable
 - Cartridge & Strip Heaters
 - Immersion & Band Heaters
 - Flexible Heaters
 - Laboratory Heaters
- ENVIRONMENTAL MONITORING AND CONTROL**
- Metering & Control Instrumentation
 - Refractometers
 - Pumps & Tubing
 - Air, Soil & Water Monitors
 - Industrial Water & Wastewater Treatment
 - pH, Conductivity & Dissolved Oxygen Instruments

OMEGA® On-Line Service
 omega.com
 Internet e-mail: info@omega.com

U.S.A. and Canada:
 Sales Service: 1-800-826-6342 / 1-800-TC-OMEGA®
 Customer Service: 1-800-622-2378 / info@omega.com.mx
 Engineering Service: 1-800-872-9436 / 1-800-USA-WHEN®
 e-mail: info@omega.ca

Servicing North America:
 OMEGA Engineering, Inc., One Omega Drive
 P.O. Box 4047, Stamford, CT 06907-0047 USA
 TEL: (203) 359-1660 FAX: (203) 359-7700
 e-mail: info@omega.com

U.S.A. and Canada:
 Sales Service: 1-800-826-6342 / 1-800-TC-OMEGA®
 Customer Service: 1-800-622-2378 / info@omega.com.mx
 Engineering Service: 1-800-872-9436 / 1-800-USA-WHEN®
 e-mail: info@omega.ca

Servicing Europe:
 Germany/Austria: Dannterspass 26
 Toll-Free: 0 800 099 3344
 TEL: +31 20 643 21 21 FAX: +31 20 643 46 43
 Toll-Free: 0 800 6397678
 FAX: +49 (0) 7039 9398-0
 FAX: +49 (0) 7056 9398-29
 e-mail: info@omega.de
 United Kingdom: ISO 9002 Certified
 OMEGA Engineering Ltd.
 One Omega Drive
 River Bend Technology Centre,
 Northbank
 Irlam, Manchester M44 5BD England
 TEL: +44 (0)161 777-6611
 FAX: +44 (0)161 777-6622
 e-mail: sales@omega.co.uk

Czech Republic:
 e-mail: sales@omega.cz
 733 01 Karvina, Czech Republic
 TEL: +420-59-631114
 e-mail: info@omegashop.cz
 Managed by the United Kingdom Office

France:
 Managed by the United Kingdom Office
 TEL: +33 (0) 161 37 29 00
 FAX: +33 (0) 161 37 29 00
 e-mail: sales@omega.fr

QUICK START

Shop online at omega.com[®]
 omega.com
 e-mail: info@omega.com
 For latest product manuals: omegamannual.info

ISO 9001 CERTIFIED COMPANY
 STAMFORD, CT

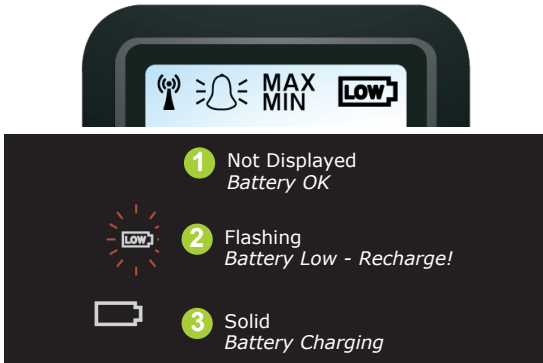
ISO 9001 CERTIFIED COMPANY
 MANCHESTER, UK

OM-EL-WiFi Series Wireless Data Loggers

Getting Started

The sensor will arrive partly charged but ideally you should charge it for 24 hours before use for optimum performance. The sensor will automatically start recharging while connected to a PC or USB charger using the USB cable provided.

The battery icon has three states:



Installing Software

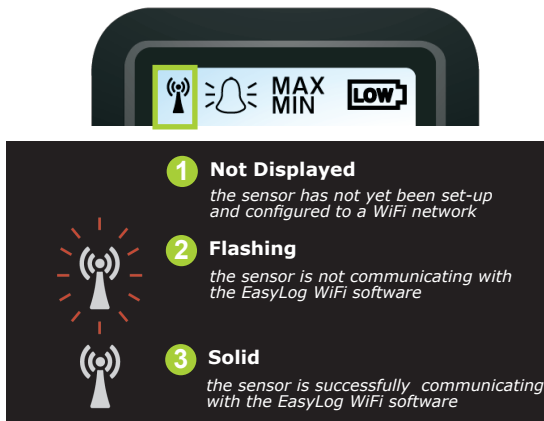
The sensor may already be displaying a reading but it will not be configured or connected to your WiFi network until you complete the product set-up.

To set up the unit use our free EasyLog WiFi PC software available to download from the 'Software' section at www.omega.com.

Sensor Placement

When placing the sensor consider local heat sources and radio obstructions. Any physical obstructions between router and sensor will affect the signal range. WiFi extenders can also be used to increase range.

The Signal icon has three states:



Hints and Tips

Use the button on the home screen to get more help on setting up your sensors.

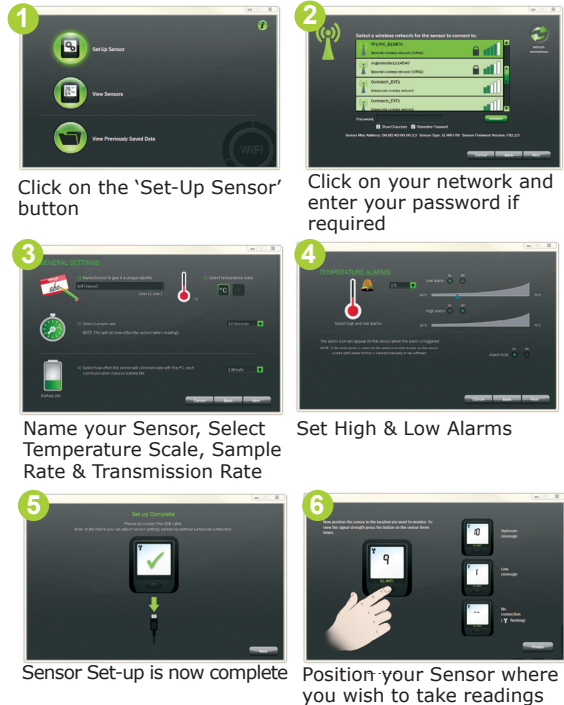
Changing Sensor Settings over Air

Sensors can be configured over the air without reconnecting the USB cable.

Sensor Settings

Connect the OM-EL-WiFi Sensor to the PC's USB port with the USB cable provided.

Double click on the EasyLog WiFi icon on your Windows™ desktop. This will load the wizard configuration software. Follow the on-screen instructions to set up your sensor.



Note: These screens will vary depending on which sensor model purchased.

Important Safety Instructions

WARNING: Failure to follow these safety instructions could result in fire, electrical shock, other injury or damage.

Battery Replacement

The rechargeable battery in the EasyLog product should only be replaced by Omega Engineering.

Repairing or Modifying

Never attempt to repair or modify EasyLog products. Dismantling EasyLog products, including the removal of external screws, may cause damage that is not covered under the warranty. Servicing should only be provided by Omega Engineering. If the EasyLog product has been submerged in water, punctured, or seriously damaged do not use it before returning it to Omega Engineering.

Charging

Only use a USB Power Adaptor or a USB port on another device to charge EasyLog products. Read all safety instructions for any third party products and accessories before use with this product. Omega Engineering is not responsible for the operation of any third party accessories or their compliance with safety and regulatory standards. We do not recommend charging the battery when the unit is at 40 °C (104 °F) or above. Some of our products employ safety features to prevent this.

Using Connectors and Ports

Never force a connector into a port; check for obstruction in the port, make sure that the connector matches the port and that you have positioned the connector correctly in relation to the port. If the connector and port do not join with reasonable ease they probably do not match and should not be used.

Disposal and Recycling Information

You must dispose of EasyLog products according to relevant laws and regulations. EasyLog products contain electronic components and Li-Po batteries and therefore they must be disposed of separately from household waste.