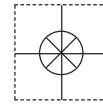


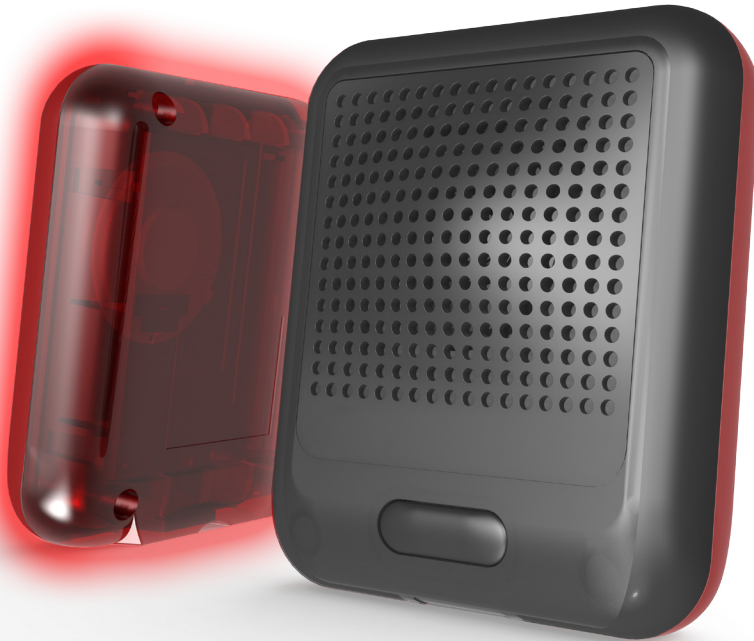
1 YEAR
WARRANTY



Ω OMEGA[®] **User's Guide**

Shop online at
omega.com[®]

e-mail: info@omega.com
For latest product manuals:
www.omegamanual.info



Windows 7, 8, Vista and XP
Configuration Software
Installation with Operations Guide

OM-EL-WiFi-ALERT



omega.com info@omega.com

Servicing North America:

U.S.A.:

Omega Engineering, Inc., One Omega Drive, P.O. Box 4047
Stamford, CT 06907-0047 USA

Toll-Free: 1-800-826-6342 (USA & Canada only)

Customer Service: 1-800-622-2378 (USA & Canada only)

Engineering Service: 1-800-872-9436 (USA & Canada only)

Tel: (203) 359-1660

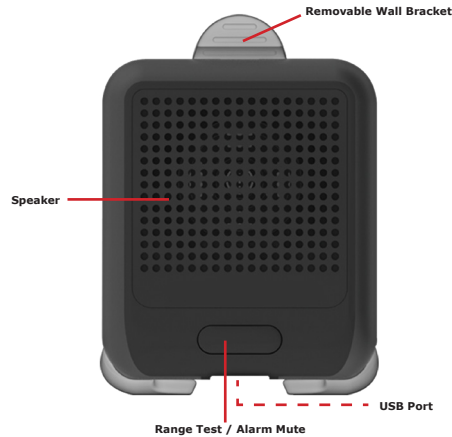
Fax: (203) 359-7700

e-mail: info@omega.com

For Other Locations Visit omega.com/worldwide

Thank you for purchasing a OM-EL-WiFi-Alert. This is a dedicated alert device that picks up alarm messages from any WiFi sensor using the same router as the Alert and within WiFi range. This device will warn you when your sensors have gone into an alarm state. Warnings include flashing red LED lights and a choice of nine audible sounds. This quick start guide provides basic information to help you use your new product.

Getting to know your Logger



Getting Started

The Alert will not be configured until you complete the product set-up. Set-up the device using the free WiFi Sensor Software which is available online at www.omega.com. Click on the 'Download Software' button and follow the on screen instructions. Once the software is installed the Alert is ready to set-up.

Please make sure you are using the latest WiFi Sensor Software version before continuing.

Set-Up

Click on the WiFi Sensor Software icon on your desktop.

Once open click on the 'Set-Up Device' button. Select the PC option and work through the instructions.



Changing Alert Settings

This can be done without reconnecting the Alert to your PC. Open the software package and click on the 'View Devices' icon. Select the PC Option and click the Alert you wish to change, then click the 'Change Device Settings' icon. The software will lead you through the options that can be amended.

Power

The OM-EL-WiFi-Alert should be permanently powered by mains via a USB mains adaptor. An internal back-up battery ensures the Alert can still operate during power outage for a limited period of time.

The Alert will arrive partly charged but please charge the device for a minimum of six hours before using the back-up battery.

The Alert is supplied with a 1m USB cable and a mains power adaptor.

Wall Bracket

The Alert comes with a clip-in bracket and self adhesive fixing so that the product can be clearly displayed and attached onto a flat surface or wall.

Alert Placement

The Alert device has a built-in WiFi signal strength indicator. Press the button three times to locate the range of the router through the use of visual LED indicators and audible sound. All LEDs and a fast beep indicate a strong signal. Limited LEDs and slow beep indicate a weak signal.

When placing your Alert device consider radio obstructions. For optimum WiFi performance you may need to try positioning the unit in various different locations/positions. Any physical obstructions between a router/access point and an Alert will affect the signal range. WiFi extenders can also be used to gain improvements.

To optimize the performance of your OM-EL-WiFi-Alert make sure you have the most up-to-date Firmware installed.

Important Safety Instructions

WARNING: Failure to follow these safety instructions could result in fire, electrical shock, other injury or damage.

Battery Replacement

The rechargeable battery in the product should only be replaced by an authorized supplier.

Repairing or Modifying

Never attempt to repair or modify WiFi sensors. Dismantling products, including the removal of external screws, may cause damage that is not covered under the warranty. Servicing should only be provided by an authorized supplier. If the WiFi sensor has been submerged in water, punctured, or seriously damaged do not use it before returning it to an authorized supplier.

Charging

Only use a USB Power Adaptor or a USB port on another device to charge WiFi sensors. Read all safety instructions for any third party products and accessories before use with this product. We are not responsible for the operation of any third party accessories or their compliance with safety and regulatory standards. We do not recommend charging the battery when the unit is at 40 °C (104 °F) or above. Some of our products employ safety features to prevent this.

Using Connectors and Ports

Never force a connector into a port; check for obstruction in the port, make sure that the connector matches the port and that you have positioned the connector correctly in relation to the port. If the connector and port do not join with reasonable ease they probably do not match and should not be used.

Disposal and Recycling Information

You must dispose of sensors according to relevant laws and regulations. The sensors contain electronic components and lithium polymer batteries and therefore they must be disposed of separately from household waste.

WARRANTY/DISCLAIMER

OMEGA ENGINEERING, INC. warrants this unit to be free of defects in materials and workmanship for a period of **13 months** from date of purchase. OMEGA's WARRANTY adds an additional one (1) month grace period to the normal **one (1) year product warranty** to cover handling and shipping time. This ensures that OMEGA's customers receive maximum coverage on each product.

If the unit malfunctions, it must be returned to the factory for evaluation. OMEGA's Customer Service Department will issue an Authorized Return (AR) number immediately upon phone or written request. Upon examination by OMEGA, if the unit is found to be defective, it will be repaired or replaced at no charge. OMEGA's WARRANTY does not apply to defects resulting from any action of the purchaser, including but not limited to mishandling, improper interfacing, operation outside of design limits, improper repair, or unauthorized modification. This WARRANTY is VOID if the unit shows evidence of having been tampered with or shows evidence of having been damaged as a result of excessive corrosion; or current, heat, moisture or vibration; improper specification; misapplication; misuse or other operating conditions outside of OMEGA's control. Components in which wear is not warranted, include but are not limited to contact points, fuses, and triacs.

OMEGA is pleased to offer suggestions on the use of its various products. However, OMEGA neither assumes responsibility for any omissions or errors nor assumes liability for any damages that result from the use of its products in accordance with information provided by OMEGA, either verbal or written. OMEGA warrants only that the parts manufactured by the company will be as specified and free of defects. OMEGA MAKES NO OTHER WARRANTIES OR REPRESENTATIONS OF ANY KIND WHATSOEVER, EXPRESSED OR IMPLIED, EXCEPT THAT OF TITLE, AND ALL IMPLIED WARRANTIES INCLUDING ANY WARRANTY OF MERCHANTABILITY AND FITNESS FOR A PARTICULAR PURPOSE ARE HEREBY DISCLAIMED. LIMITATION OF LIABILITY: The remedies of purchaser set forth herein are exclusive, and the total liability of OMEGA with respect to this order, whether based on contract, warranty, negligence, indemnification, strict liability or otherwise, shall not exceed the purchase price of the component upon which liability is based. In no event shall OMEGA be liable for consequential, incidental or special damages.

CONDITIONS: Equipment sold by OMEGA is not intended to be used, nor shall it be used: (1) as a "Basic Component" under 10 CFR 21 (NRC), used in or with any nuclear installation or activity; or (2) in medical applications or used on humans. Should any Product(s) be used in or with any nuclear installation or activity, medical application, used on humans, or misused in any way, OMEGA assumes no responsibility as set forth in our basic WARRANTY/DISCLAIMER language, and, additionally, purchaser will indemnify OMEGA and hold OMEGA harmless from any liability or damage whatsoever arising out of the use of the Product(s) in such a manner.

RETURN REQUESTS/INQUIRIES

Direct all warranty and repair requests/inquiries to the OMEGA Customer Service Department. BEFORE RETURNING ANY PRODUCT(S) TO OMEGA, PURCHASER MUST OBTAIN AN AUTHORIZED RETURN (AR) NUMBER FROM OMEGA'S CUSTOMER SERVICE DEPARTMENT (IN ORDER TO AVOID PROCESSING DELAYS). The assigned AR number should then be marked on the outside of the return package and on any correspondence.

The purchaser is responsible for shipping charges, freight, insurance and proper packaging to prevent breakage in transit.

FOR **WARRANTY** RETURNS, please have the following information available BEFORE contacting OMEGA:

1. Purchase Order number under which the product was PURCHASED,
2. Model and serial number of the product under warranty, and
3. Repair instructions and/or specific problems relative to the product.

FOR **NON-WARRANTY** REPAIRS, consult OMEGA for current repair charges. Have the following information available BEFORE contacting OMEGA:

1. Purchase Order number to cover the COST of the repair,
2. Model and serial number of the product, and
3. Repair instructions and/or specific problems relative to the product.

OMEGA's policy is to make running changes, not model changes, whenever an improvement is possible. This affords our customers the latest in technology and engineering.

OMEGA is a registered trademark of OMEGA ENGINEERING, INC.

© Copyright 2014 OMEGA ENGINEERING, INC. All rights reserved. This document may not be copied, photocopied, reproduced, translated, or reduced to any electronic medium or machine-readable form, in whole or in part, without the prior written consent of OMEGA ENGINEERING, INC.

Where Do I Find Everything I Need for Process Measurement and Control? **OMEGA...Of Course!**

Shop online at omega.comSM

TEMPERATURE

- ☑ Thermocouple, RTD & Thermistor Probes, Connectors, Panels & Assemblies
- ☑ Wire: Thermocouple, RTD & Thermistor
- ☑ Calibrators & Ice Point References
- ☑ Recorders, Controllers & Process Monitors
- ☑ Infrared Pyrometers

PRESSURE, STRAIN AND FORCE

- ☑ Transducers & Strain Gages
- ☑ Load Cells & Pressure Gages
- ☑ Displacement Transducers
- ☑ Instrumentation & Accessories

FLOW/LEVEL

- ☑ Rotameters, Gas Mass Flowmeters & Flow Computers
- ☑ Air Velocity Indicators
- ☑ Turbine/Paddlewheel Systems
- ☑ Totalizers & Batch Controllers

pH/CONDUCTIVITY

- ☑ pH Electrodes, Testers & Accessories
- ☑ Benchtop/Laboratory Meters
- ☑ Controllers, Calibrators, Simulators & Pumps
- ☑ Industrial pH & Conductivity Equipment

DATA ACQUISITION

- ☑ Data Acquisition & Engineering Software
- ☑ Communications-Based Acquisition Systems
- ☑ Plug-in Cards for Apple, IBM & Compatibles
- ☑ Data Logging Systems
- ☑ Recorders, Printers & Plotters

HEATERS

- ☑ Heating Cable
- ☑ Cartridge & Strip Heaters
- ☑ Immersion & Band Heaters
- ☑ Flexible Heaters
- ☑ Laboratory Heaters

ENVIRONMENTAL MONITORING AND CONTROL

- ☑ Metering & Control Instrumentation
- ☑ Refractometers
- ☑ Pumps & Tubing
- ☑ Air, Soil & Water Monitors
- ☑ Industrial Water & Wastewater Treatment
- ☑ pH, Conductivity & Dissolved Oxygen Instruments