

1 YEAR
WARRANTY

CE

Made in Taiwan



User's Guide

SOFTWARE FOR HH66U Handheld Thermometer K/J/T/E/R/S/N Types

Shop online at

omega.com[®]
OMEGA[®]

omega.com

e-mail: info@omega.com

For latest product manuals:

omegamanual.info

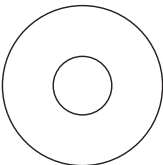
OMEGASOFT

HH66U

Software for Data Logger Thermometer

Ver. V1.0.12

Windows 98/Windows 2000/
Windows XP
(Windows 2000/Windows XP
are recommended)



OMEGA
ENGINEERING, INC.

omega.com[®]

1-800-USA-WHEN (1-800-872-9436)

© COPYRIGHT 2009 OMEGA ENGINEERING, INC.

ISO 9001
CERTIFIED
CORPORATE QUALITY
STAMFORD, CT

ISO 9001
CERTIFIED
CORPORATE QUALITY
MANCHESTER, UK



OMEGAnet® Online Service
omega.com

Internet e-mail
info@omega.com

Servicing North America:

U.S.A.:
ISO 9001 Certified

Omega Engineering, Inc., One Omega Drive, P.O. Box 4047
Stamford, CT 06907-0047
Toll-Free: 1-800-826-6342
FAX: (203) 359-7700

Tel: (203) 359-1660
e-mail: info@omega.com

Canada:

976 Bergar
Laval (Quebec), Canada H7L 5A1
Toll-Free: 1-800-826-6342
FAX: (514) 856-6886

TEL: (514) 856-6928
e-mail: info@omega.ca

For immediate technical or application assistance:

U.S.A. and Canada:

Sales Service: 1-800-826-6342/1-800-TC-OMEGA®
Customer Service: 1-800-622-2378/1-800-622-BEST®
Engineering Service: 1-800-872-9436/1-800-USA-WHEN®

Mexico:

En Español: 001 (203) 359-7803
info@omega.com.mx

FAX: (001) 203-359-7807
e-mail: espanol@omega.com

Servicing Europe:

Benelux:

Managed by the United Kingdom Office
Toll-Free: 0800 099 3344
FAX: +31 20 643 46 43

TEL: +31 20 347 21 21
e-mail: sales@omega.nl

Czech Republic:

Frystatska 184
733 01 Karviná, Czech Republic
Toll-Free: 0800-1-66342
FAX: +420-59-6311114

TEL: +420-59-6311899
e-mail: info@omegashop.cz

France:

Managed by the United Kingdom Office
Toll-Free: 0800 466 342
FAX: +33 (0) 130 57 54 27

TEL: +33 (0) 161 37 29 00
e-mail: sales@omega.fr

Germany/Austria:

Daimlerstrasse 26
D-75392 Deckenpfronn, Germany
Toll-Free: 0 800 6397678
FAX: +49 (0) 7056 9398-29

TEL: +49 (0) 7059 9398-0
e-mail: info@omega.de

United Kingdom:
ISO 9001 Certified

OMEGA Engineering Ltd.
One Omega Drive, River Bend Technology Centre, Northbank
Irlam, Manchester M44 5BD England
Toll-Free: 0800-488-488
FAX: +44 (0)161 777-6622

TEL: +44 (0)161 777-6611
e-mail: sales@omega.co.uk

It is the policy of OMEGA Engineering, Inc. to comply with all worldwide safety and EMC/EMI regulations that apply. OMEGA is constantly pursuing certification of its products to the European New Approach Directives. OMEGA will add the CE mark to every appropriate device upon certification.

The information contained in this document is believed to be correct, but OMEGA accepts no liability for any errors it contains, and reserves the right to alter specifications without notice.

WARNING: These products are not designed for use in, and should not be used for, human applications.

1. Installation/Remove

1.1 The minimum hardware requirements for HH66U Temp Monitor_S2 software is:

Windows 98 / 2000 / XP / Vista

(Windows 2000 / XP / Vista are recommended)

800 megahertz (MHz) processor or faster (1.6 GHz is recommended)

At least 128 megabytes (MB) of RAM (256 MB is recommended)

At least 250 megabytes (MB) of available space on the hard drive

CD/ DVD-ROM driver

Keyboard and a Microsoft Mouse or some other compatible pointing device

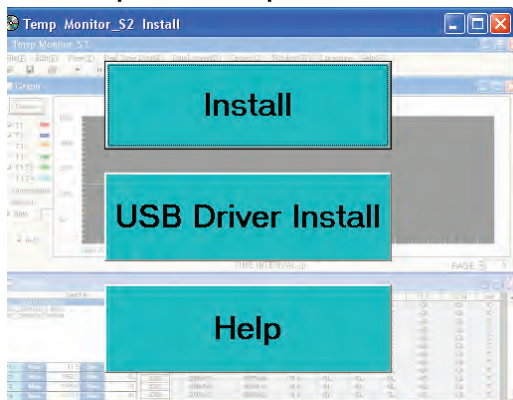
Video adapter and monitor with Super VGA (800 x 600) or higher resolution

This software supports Excel to save / open files function, if needed please install Microsoft Excel 2000 / 2003.

1.2 Installation

Notice: Before using HH66U on-line you first need to install the software and USB driver.

Install the thermometer software and USB driver first to a Windows platform computer.



1. Insert CD-ROM in the CD-ROM driver of the PC. Manual opens automatically. If manual does not open automatically double click CD-ROM icon, double click "install.exe".

2. Install Temp Monitor_S2 software, click on "Install" of the menu or browse "setup_5.exe" of the CD-ROM and install. (D:\setup_5.exe -S suppose D is a CD-ROM driver)

Notice: If the operating system is Windows Vista, please click on setup.exe.

When installing, the following picture will appear.

Temp Monitor_S2 1.0.12



Click "Next"

Temp Monitor_S2 1.0.12



Click "Next"

Temp Monitor_S2

1.0.12



Click “Next”

Temp Monitor_S2

1.0.12



During the installation process, when the above picture appears, installation of Temp Monitor 1 is complete, then click “Finish”.

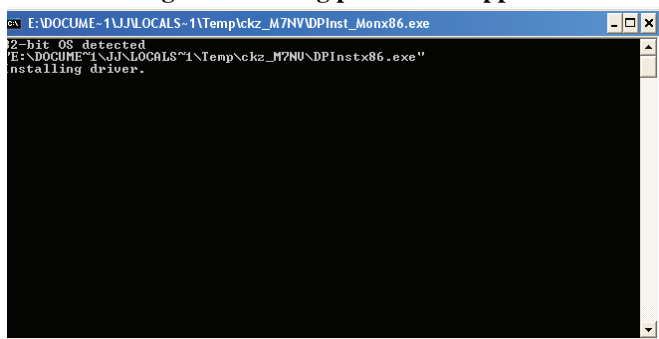
3. Install USB driver, click “USB Driver Install” menus open automatically or browse “USB driver” folder.

“Win2000_XP_VISTA” folder “CDM 2.04.16.exe” to carry out the installation.

**D:\USB driver\Win2000_XP_VISTA\CDM 2.04.16.exe -
Suppose D is a CD-ROM driver)**

Notice: There are Win2000_XP_VISTA and Win98_ME folders in USB driver. older, please select what operating system you need for installation.

When installing the following picture will appear:

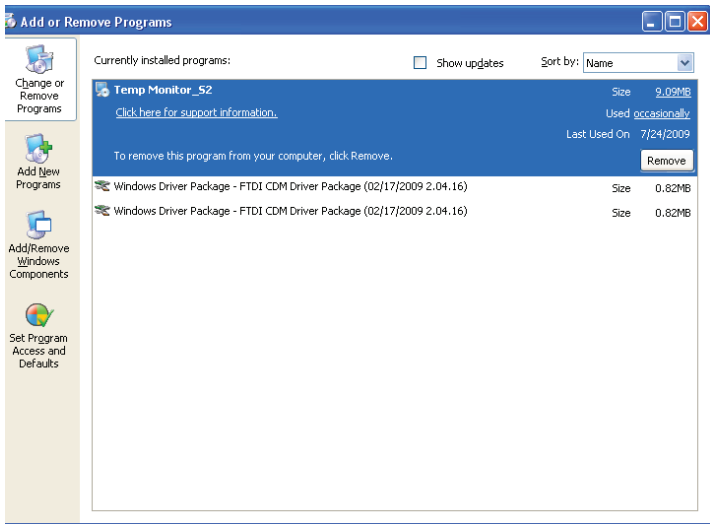


```
cmd E:\DOCUME~1\JJ\LOCALS~1\Temp\ckz_M7NVDPInst_Monx86.exe
32-bit OS detected
'E:\DOCUME~1\JJ\LOCALS~1\Temp\ckz_M7NU\DPInstx86.exe'
Installing driver.
```

When the above picture appears, installation of the USB driver is finished. The CD-ROM download to the PC is taken out of the CD-ROM driver.

1.3 Remove Temp Monitor_S2 and USB driver

1. Please close the use software first.
2. Click “start”.
3. Click “Control Panel” → “Add or Remove Programs” → “Temp Monitor_S2” to uninstall.
4. Click “Windows Driver Package – FTDI CDM Driver Package” to uninstall.

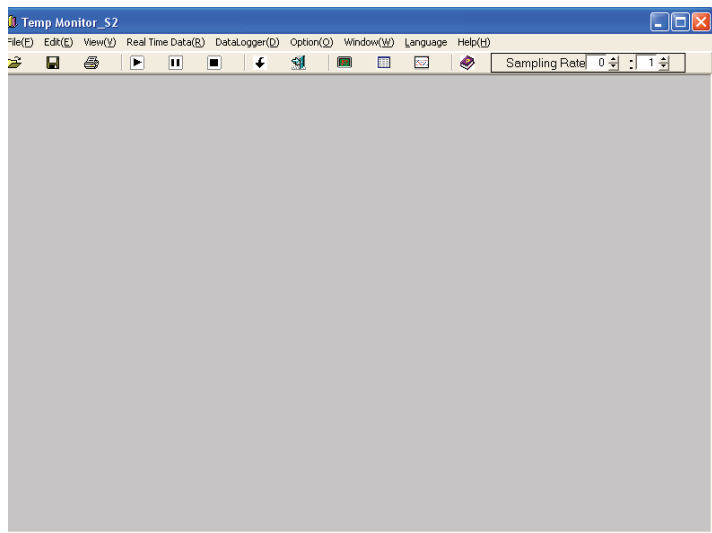


2. On-line/download to PC

1. USB wire / RS-232 wire to connect PC and thermometer.
2. Click “start”→ “All Programs” → “Temp Monitor_S2” → “Temp Monitor_S2”.

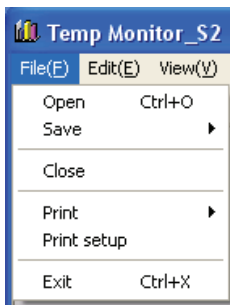


3. Picture of the software.



2.1 Brief introduction of every function:

File menu:



Open  : open file.

Save  : save file.

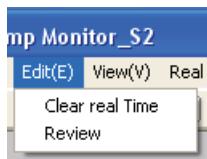
Close: Close picture while carrying out.

Print  : print file.

Print setup: Set up printer.

Exit  : Finish program.

Edit menu:



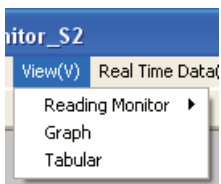
Clear real Time: Remove record data.

Review: The window GRAPH is described again.

Notice: Clear real Time uses the record data to clear under the real time recording mode, first carry out any program recording after clicking “Stop” to carry out record data to clear.

“Stop” please consult page 10 RealTime Data menu.

View menu:

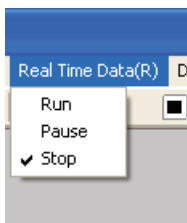



Reading Monitor  : open / close Reading Monitor window.

Graph  : open / close Graph window.


Tabular  : open / close Tabular window.

Real Time Data menu:



Run  : on-line, carry out Real Time function.

Pause  : Real Time record is suspended.

Stop  : off-line (off-line with Meter).

DataLogger menu:



ON  : Loaded the record data of datalogger from METER to PC.

Option menu:

Reading Monitor - The reading of selects and sets up



Monitor Display

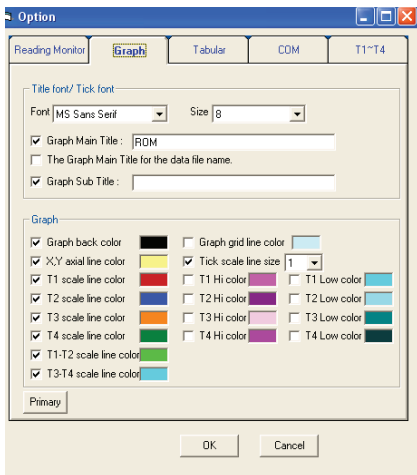
Set up style, size of script, the color and background color of the reading window.

T1 / T2 / T3 / T4 Limit (T1 / T2 / T3 / T4 critical value restraint in setting up)

Set up warning background color and the opening and closing of the warnings of the maximum, minimum critical value, is not recommended using white in order to warn the background color.

Primary button can be returned to initial selects.

Graph - graph selects and sets up



Title font / Tick font (the style of title / the style of the mark sets up)

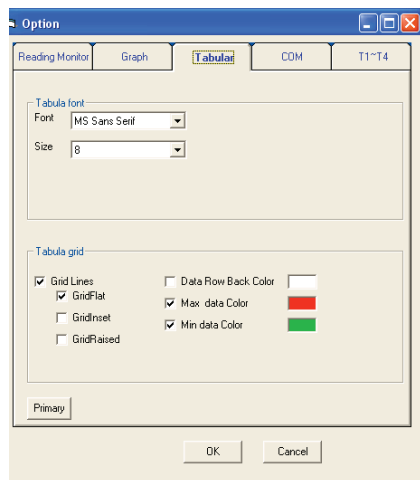
Set up style of the title, subtitle and mark and size of script.

Graph- graph window picture sets up

Set up the background color of the graph window, scale line, Hi / Low scale line, cross axle, grid color are set up, scale line size are set up. User can select whether or not to show on the graph window picture.

Primary button can be returned to initial selects.

Tabular - The form selects and sets up



Tabular font (The style of the form sets up)

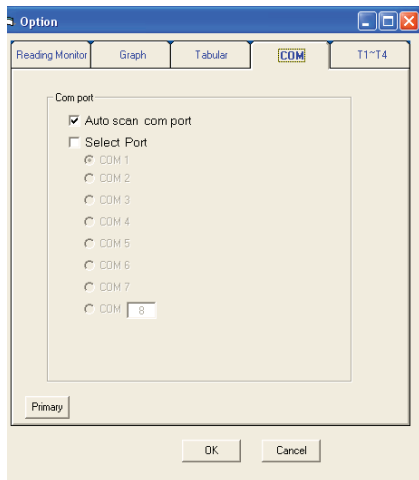
Set up the style of form and size of script.

Tabular grid (The form grid sets up)

Set up grid type, background form color and maximum, minimum value and label color.

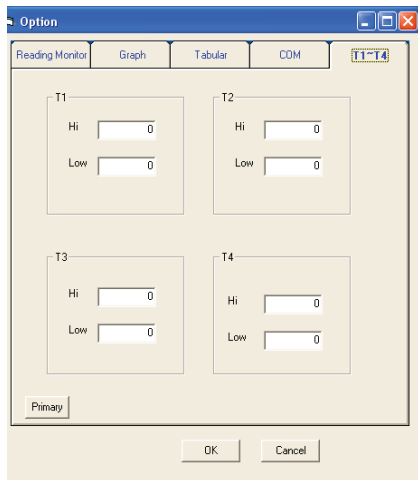
Primary button can be returned to initial selects.

COM - The COM Port selects and sets up



**Can choose to auto scan COM ports or select the COM port.
Primary button can be returned to initial selects.**

T1~T4



Can set T1, T2, T3 and T4 Hi / Low value, the range cannot exceed the thermocouple type maximum / minimum value. Primary button can be returned to initial selects.

Window menu:



Cascade: cascade arrange.

Horizontal: horizontal arrange.

Vertical: vertical arrange.

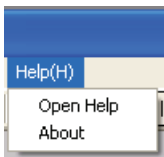
Arrange Icons: arrange icon.

Language menu:



Can choose three language, for English, traditional Chinese and the simplified Chinese. The default language is English.

Help menu_



Open Help  :open Help file

About: The edition declares.

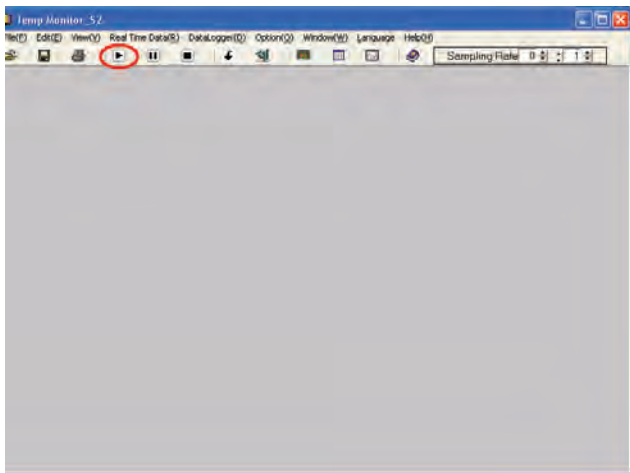
Interval of on-line record of Real Time:

Only Real Time has this function, from 00 minute and 01 second to 59 minutes and 59 seconds.

Sampling Rate	0	:	1
---------------	---	---	---

2.2 Carry out Real Time_

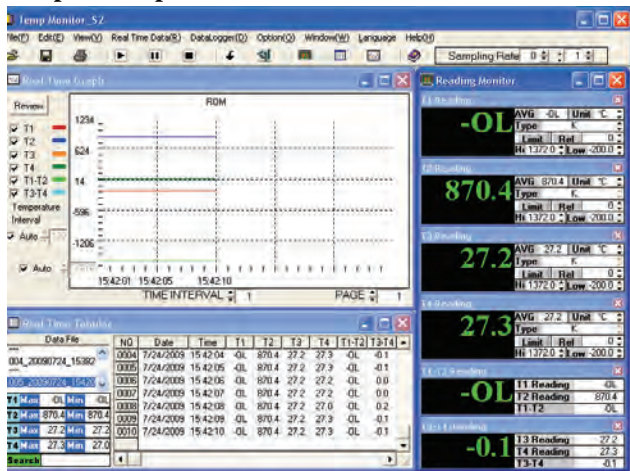
1. Start the meter pc function Click the RUN  key on the picture



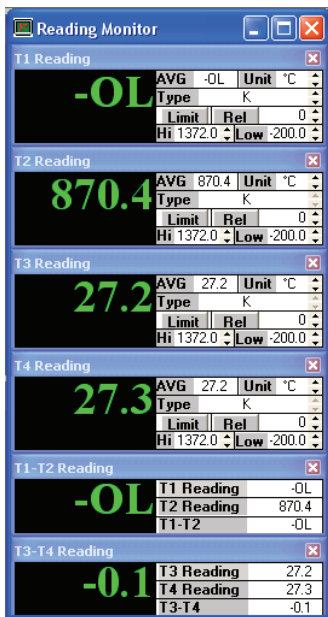
2. The software on- line will have the following picture:



3. Operation picture



2.3 Brief introduction of every window function: Reading Monitor window:



AVG: average value.

Unit: temperature unit choose, can choose °C, °F or K.

The software default temperature unit is °C; you must carry out °F record, after carrying out RUN readjustment Unit is °F.

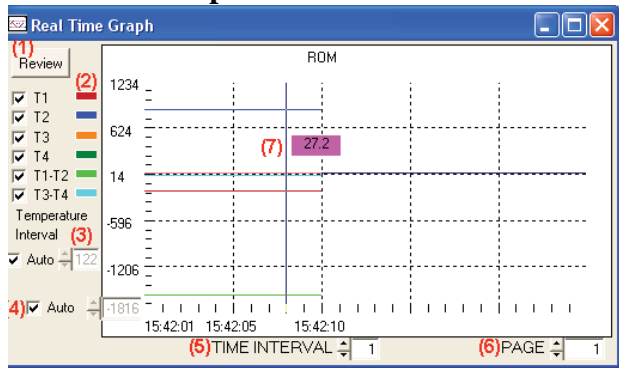
Type: thermocouple Type form is chosen; it is determined that optional Type is set up by Meter function.

Rel: The setting up value of Rel, press the function key of Rel, the window shows Rel symbol, the showing reading is reading reduced by the setting up value of Rel.

Limit & Hi / Low: The setting up

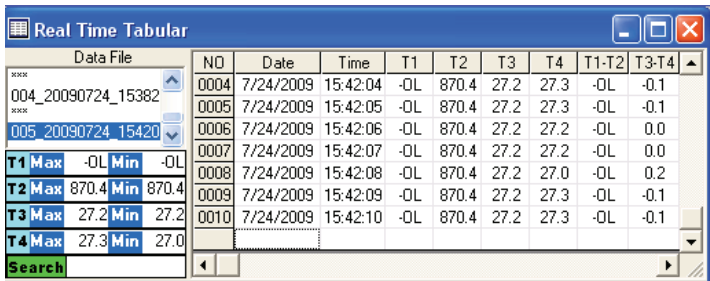
value of Hi Low, upper and lower limits are decided by Type chosen, press the function key of Limit from Type, the window shows Limit symbol, when the reading is greater than the setting up value of Hi, the window turns into sets up color of Hi, at the same time PC will give out warnings. When the reading is smaller than the setting up value of Low, the window turns into sets up color of Low, will send out the warnings of PC at the same time.

Real Time Graph window:




- 1) Graph Redraw Button.
- 2) T1, T2, T3, T4, T1-T2 and T3-T4 scale line, check items needed to display the scale line.
- 3) Temperature Interval default is auto, if user needs to change the temperature interval, the item will be canceled. User can change temperature interval from 1 to 999.
- 4) Temperature coordinates start value default is auto. If the user needs to change the start value, the checked item will be canceled to set.
- 5) Set up time in the interval of scale, max 59 minutes and 59 seconds, min 0 minute and 1 second.
- 6) Page: max 400 pages.

Tabular window



Data File		NO	Date	Time	T1	T2	T3	T4	T1-T2	T3-T4
***	004_20090724_15382	0004	7/24/2009	15:42:04	-OL	870.4	27.2	27.3	-OL	-0.1
***		0005	7/24/2009	15:42:05	-OL	870.4	27.2	27.3	-OL	-0.1
	005_20090724_15420	0006	7/24/2009	15:42:06	-OL	870.4	27.2	27.2	-OL	0.0
		0007	7/24/2009	15:42:07	-OL	870.4	27.2	27.2	-OL	0.0
T1 Max	-OL Min	0008	7/24/2009	15:42:08	-OL	870.4	27.2	27.0	-OL	0.2
T2 Max	870.4 Min	0009	7/24/2009	15:42:09	-OL	870.4	27.2	27.3	-OL	-0.1
T3 Max	27.2 Min	0010	7/24/2009	15:42:10	-OL	870.4	27.2	27.3	-OL	-0.1
T4 Max	27.3 Min									
Search										

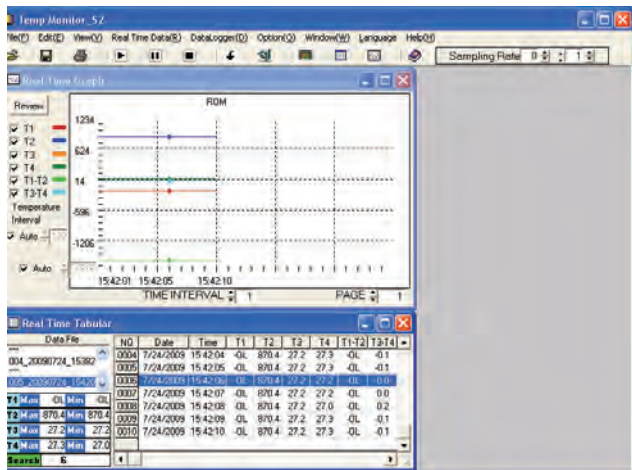
DataFile: Seat files temporarily record value; each file can record 9999 record data points. Exceeding 9999 points will change the new-record value file and will continue to record automatically temporarily.

Notice: If you want to save data please select files temporarily in DataFile to press  or “Save” of File of menu.

If you want to delete a recorded file in DataFile, click the file you want to delete, press mouse right key or choose Clear real Time of Edit of menu. A talk window will appear prompting you whether or not you want to delete the recorded file.

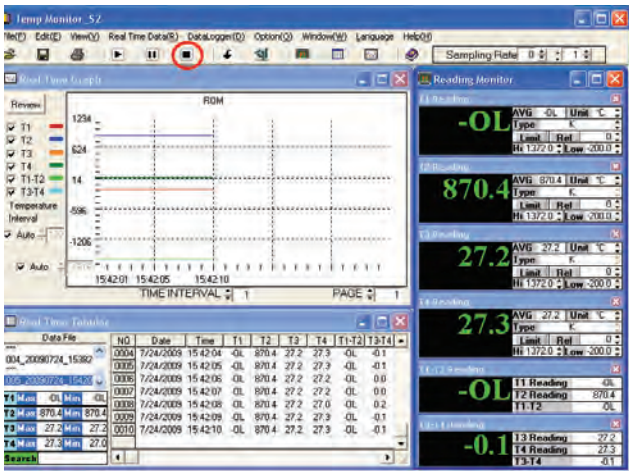
T1 / T2 / T3 / T4: T1 / T2 / T3 / T4 maximum, minimum value of recorded value, press MAX or MIN to find the relative recorded value in the recorded list.

Search: To stop in real time, you can search for data (ex: the 6th data). Enter in the search space of 6, use mouse left key to click the green search button. The Graph window will show a curve marked by points, and the tabular will be highlighted.



2.4 Carry out DataLogger download data:

Notice: Before making the download data of DataLogger, if you used Real Time function, please stop Real Time first, and then carry on DataLogger download data.

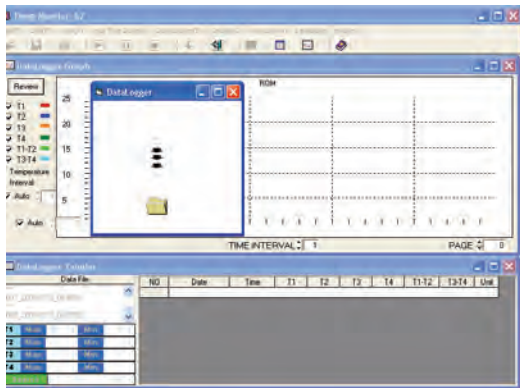


1. Start DataLogger download data:

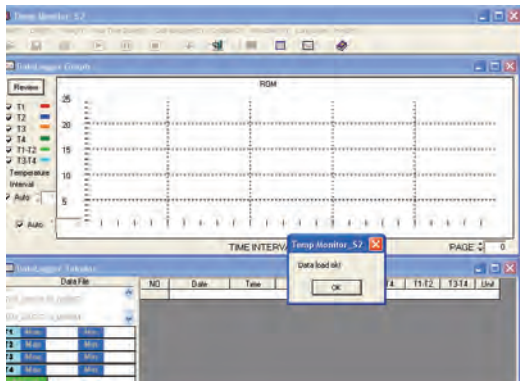
Click  of picture function keys or “ON” of DataLogger menu.

Notice: Before making the download data of DataLogger you must stop the meter's PC function.

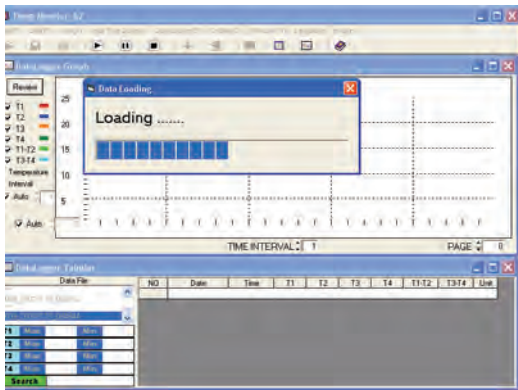
2. The picture of download data after on-line



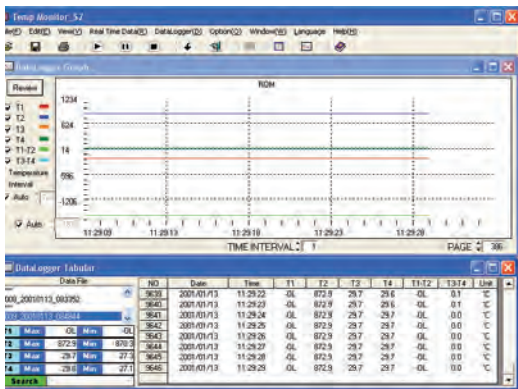
3. The download data finished picture



4. Open download data picture

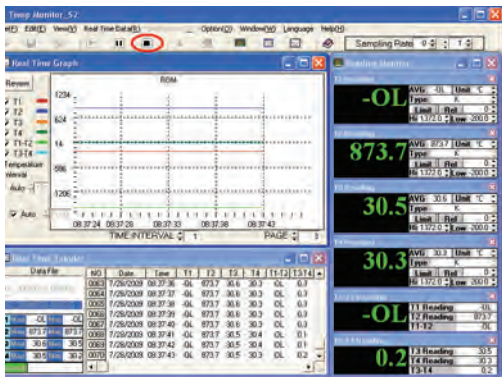


5. The download data open the picture of finishing

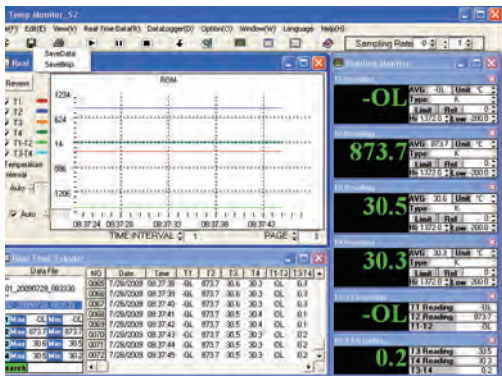


2.5 Save files:

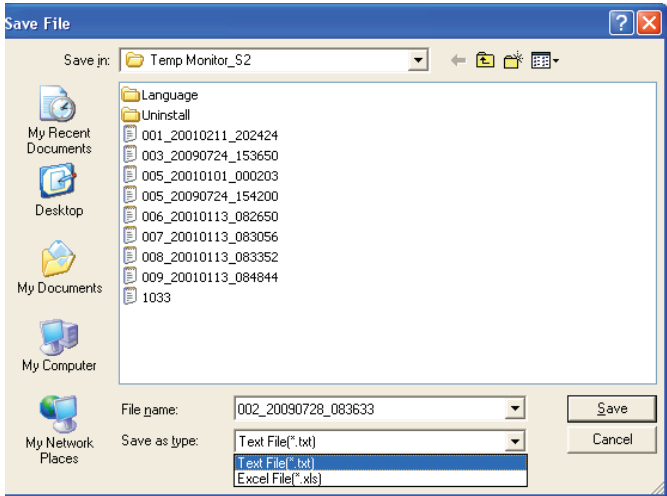
Notice: Before saving data, if you used Real Time function, please stop Real Time first, and then carry on “SAVE” data.



1. Click record temporary file in DataFile then to click  or “Save” of File menu.

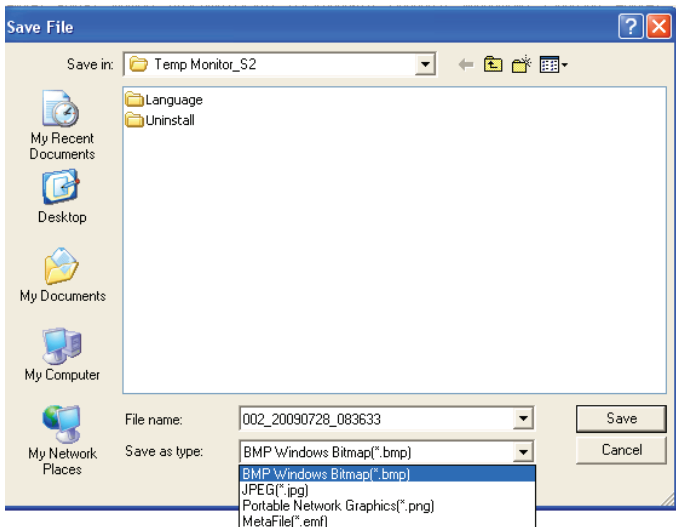


2. Choose SaveData picture



Left side functions of picture are arranged with draw menu in the save position. This type can be revised to change file name or type of saved file, as being scheduled type of saving *.txt. If you wish to change save type to *.xls, please change the picture.

3.Choose SaveBMP picture

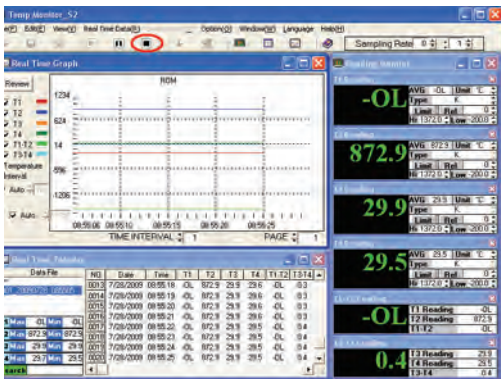


Left side functions of picture are arranged with draw menu in the save position. This type can be revised to change file name or type of save file, as being scheduled type of saving *.BMP. If you wish to change save type to *.jpg, *.png, or *.emf, please change the picture.

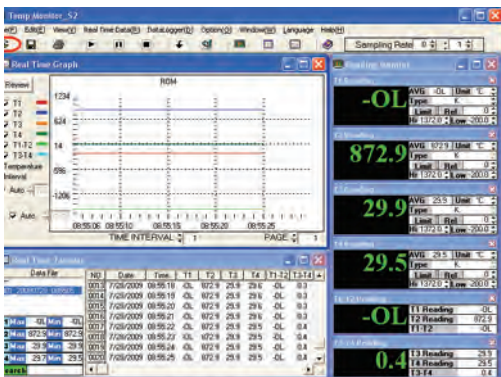
2.6 Open-open old file:

Notice: Before printing data, if you used Real Time function, please stop.

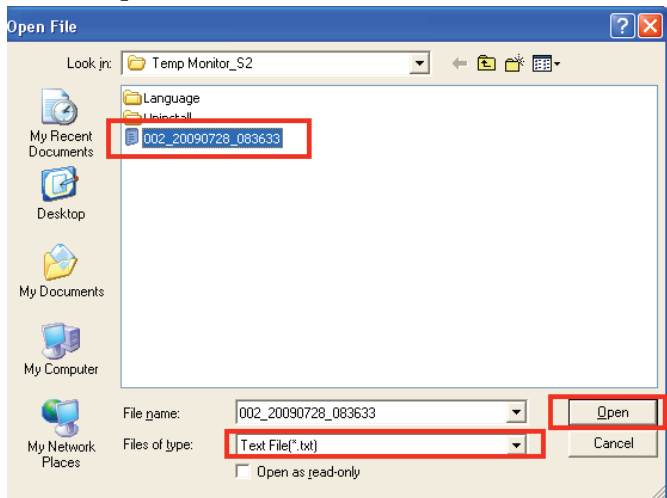
Real Time first, and then carry on OPEN -open old file.



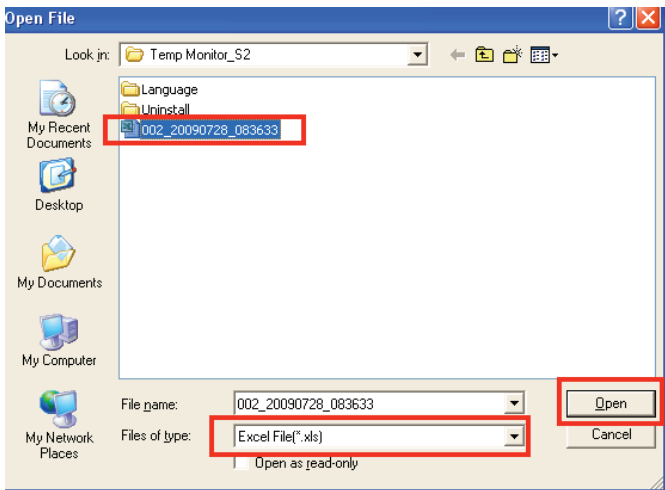
1. Click record temporary file in DataFile then to click  or “Open” of File menu.



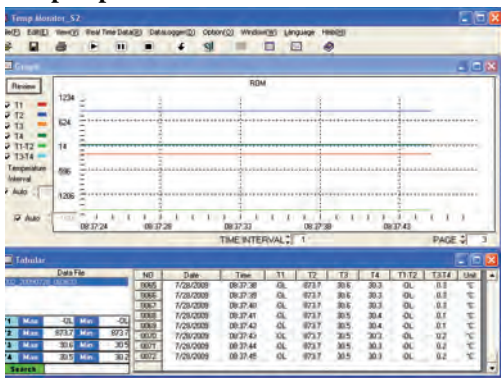
2. Choose picture of file:



Press “open” on the lower right corner after choosing the file you want to open. If the open file type is different please open according to down picture.

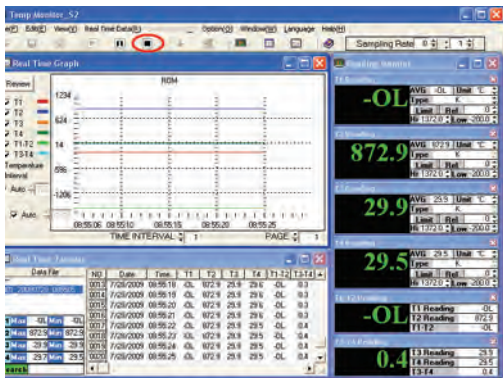


3. Open picture of finished

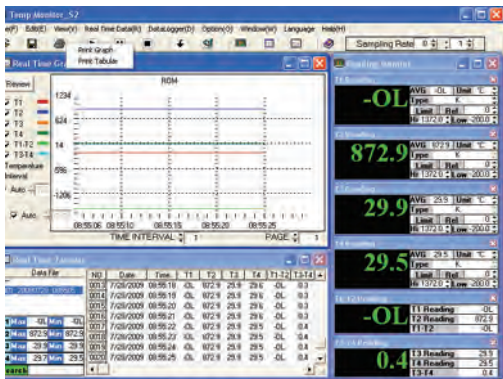


2.7 Print types the file:

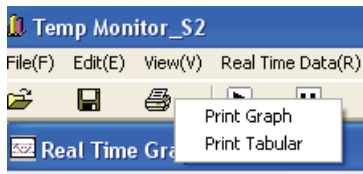
Notice: Before printing data, if you used Real Time function, please stop Real Time first, and then Print data.



1. Click record temporary file in DataFile then to click  or “Print” of File menu.



2.Choose the print type



(1) Print Graph type picture.

This function prints in the Graph window picture. Choose the printer window after clicking, then choose the type of printer by clicking the print button.

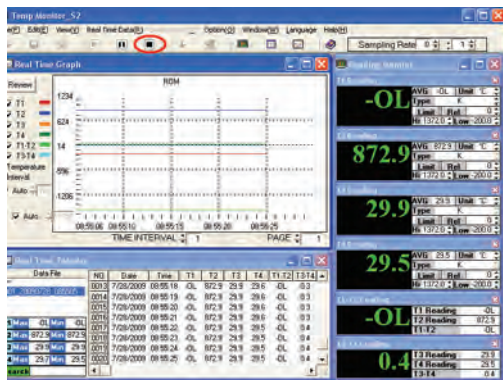
Notice: Before printing the Graph window picture, please use Graph of Option to set up the window first, then make bottom into white or other light color.

(2) Print Tabular of form content:

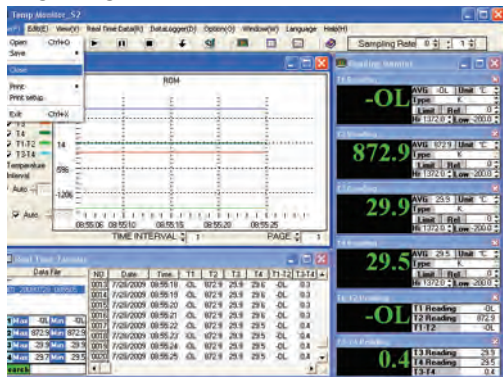
This function prints the form content at Tabular window. Choose the printer window after clicking, by choosing the type of printer then click the print button.

2.8 Close the picture while carrying out:

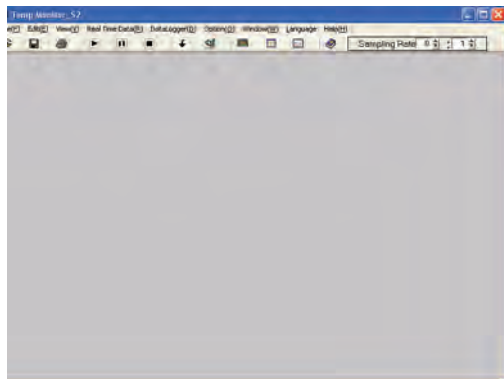
Notice: Before closing the picture while carrying out, if you used the Real time function, then stop Real Time first, and then carry the picture closing while carrying out.



1. Click Close in menu of File.



2. Picture after carry out.



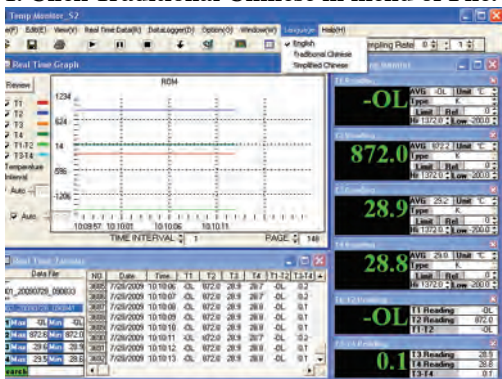
2.9 Language

Notice 1: Before changing the language, if you used Real Time function, please stop Real Time first, and then change the language.

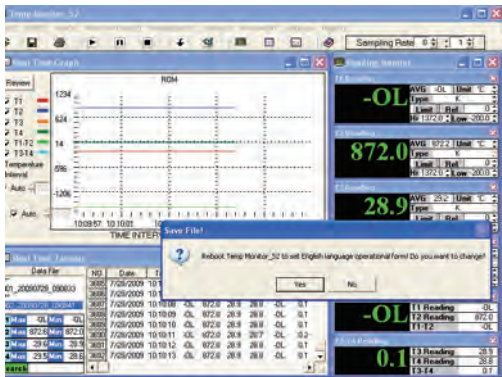
Notice 2: If your operating system does not support Chinese characters then there is no need to change the language.



1. Click Traditional Chinese in menu of File.



2. If you want to change the language, please click the “YES” button.



3. This will end the program and automatically return you to the computer screen.

If you want to replace the screen back to the original language, please repeat the above action.

NOTES:

NOTES:

WARRANTY/DISCLAIMER

OMEGA ENGINEERING, INC. warrants this unit to be free of defects in materials and workmanship for a period of **13 months** from date of purchase. OMEGA's Warranty adds an additional one (1) month grace period to the normal **one (1) year product warranty** to cover handling and shipping time. This ensures that OMEGA's customers receive maximum coverage on each product.

If the unit malfunctions, it must be returned to the factory for evaluation. OMEGA's Customer Service Department will issue an Authorized Return (AR) number immediately upon phone or written request. Upon examination by OMEGA, if the unit is found to be defective, it will be repaired or replaced at no charge. OMEGA's WARRANTY does not apply to defects resulting from any action of the purchaser, including but not limited to mishandling, improper interfacing, operation outside of design limits, improper repair, or unauthorized modification. This WARRANTY is VOID if the unit shows evidence of having been tampered with or shows evidence of having been damaged as a result of excessive corrosion; or current, heat, moisture or vibration; improper specification; misapplication; misuse or other operating conditions outside of OMEGA's control. Components in which wear is not warranted, include but are not limited to contact points, fuses, and triacs.

OMEGA is pleased to offer suggestions on the use of its various products. However, OMEGA neither assumes responsibility for any omissions or errors nor assumes liability for any damages that result from the use of its products in accordance with information provided by OMEGA, either verbal or written. OMEGA warrants only that the parts manufactured by the company will be as specified and free of defects. OMEGA MAKES NO OTHER WARRANTIES OR REPRESENTATIONS OF ANY KIND WHATSOEVER, EXPRESSED OR IMPLIED, EXCEPT THAT OF TITLE, AND ALL IMPLIED WARRANTIES INCLUDING ANY WARRANTY OF MERCHANTABILITY AND FITNESS FOR A PARTICULAR PURPOSE ARE HEREBY DISCLAIMED. LIMITATION OF LIABILITY: The remedies of purchaser set forth herein are exclusive, and the total liability of OMEGA with respect to this order, whether based on contract, warranty, negligence, indemnification, strict liability or otherwise, shall not exceed the purchase price of the component upon which liability is based. In no event shall OMEGA be liable for consequential, incidental or special damages.

CONDITIONS: Equipment sold by OMEGA is not intended to be used, nor shall it be used: (1) as a "Basic Component" under 10 CFR 21 (NRC), used in or with any nuclear installation or activity; or (2) in medical applications or used on humans. Should any Product(s) be used in or with any nuclear installation or activity, medical application, used on humans, or misused in any way, OMEGA assumes no responsibility as set forth in our basic WARRANTY/DISCLAIMER language, and, additionally, purchaser will indemnify OMEGA and hold OMEGA harmless from any liability or damage whatsoever arising out of the use of the Product(s) in such a manner.

RETURN REQUESTS/INQUIRIES

Direct all warranty and repair requests/inquiries to the OMEGA Customer Service Department. BEFORE RETURNING ANY PRODUCT(S) TO OMEGA, PURCHASER MUST OBTAIN AN AUTHORIZED RETURN (AR) NUMBER FROM OMEGA'S CUSTOMER SERVICE DEPARTMENT (IN ORDER TO AVOID PROCESSING DELAYS). The assigned AR number should then be marked on the outside of the return package and on any correspondence. The purchaser is responsible for shipping charges, freight, insurance and proper packaging to prevent breakage in transit.

FOR **WARRANTY** RETURNS, please have the following information available BEFORE contacting OMEGA:

1. Purchase Order number under which the product was PURCHASED,
2. Model and serial number of the product under warranty, and
3. Repair instructions and/or specific problems relative to the product.

FOR **NON-WARRANTY** REPAIRS, consult OMEGA for current repair charges. Have the following information available BEFORE contacting OMEGA:

1. Purchase Order number to cover the COST of the repair,
2. Model and serial number of the product, and
3. Repair instructions and/or specific problems relative to the product.

OMEGA's policy is to make running changes, not model changes, whenever an improvement is possible. This affords our customers the latest in technology and engineering.

OMEGA is a registered trademark of OMEGA ENGINEERING, INC.

© Copyright 2009 OMEGA ENGINEERING, INC. All rights reserved. This document may not be copied, photocopied, reproduced, translated, or reduced to any electronic medium or machine-readable form, in whole or in part, without the prior written consent of OMEGA ENGINEERING, INC.

Where Do I Find Everything I Need for Process Measurement and Control? **OMEGA...Of Course!**

Shop online at omega.comSM

TEMPERATURE

- Thermocouple, RTD & Thermistor Probes, Connectors, Panels & Assemblies
- Wire: Thermocouple, RTD & Thermistor
- Calibrators & Ice Point References
- Recorders, Controllers & Process Monitors
- Infrared Pyrometers

PRESSURE, STRAIN AND FORCE

- Transducers & Strain Gages
- Load Cells & Pressure Gages
- Displacement Transducers
- Instrumentation & Accessories

FLOW/LEVEL

- Rotameters, Gas Mass Flowmeters & Flow Computers
- Air Velocity Indicators
- Turbine/Paddlewheel Systems
- Totalizers & Batch Controllers

pH/CONDUCTIVITY

- pH Electrodes, Testers & Accessories
- Benchtop/Laboratory Meters
- Controllers, Calibrators, Simulators & Pumps
- Industrial pH & Conductivity Equipment

DATA ACQUISITION

- Data Acquisition & Engineering Software
- Communications-Based Acquisition Systems
- Plug-in Cards for Apple, IBM & Compatibles
- Datalogging Systems
- Recorders, Printers & Plotters

HEATERS

- Heating Cable
- Cartridge & Strip Heaters
- Immersion & Band Heaters
- Flexible Heaters
- Laboratory Heaters

ENVIRONMENTAL MONITORING AND CONTROL

- Metering & Control Instrumentation
- Refractometers
- Pumps & Tubing
- Air, Soil & Water Monitors
- Industrial Water & Wastewater Treatment
- pH, Conductivity & Dissolved Oxygen Instruments